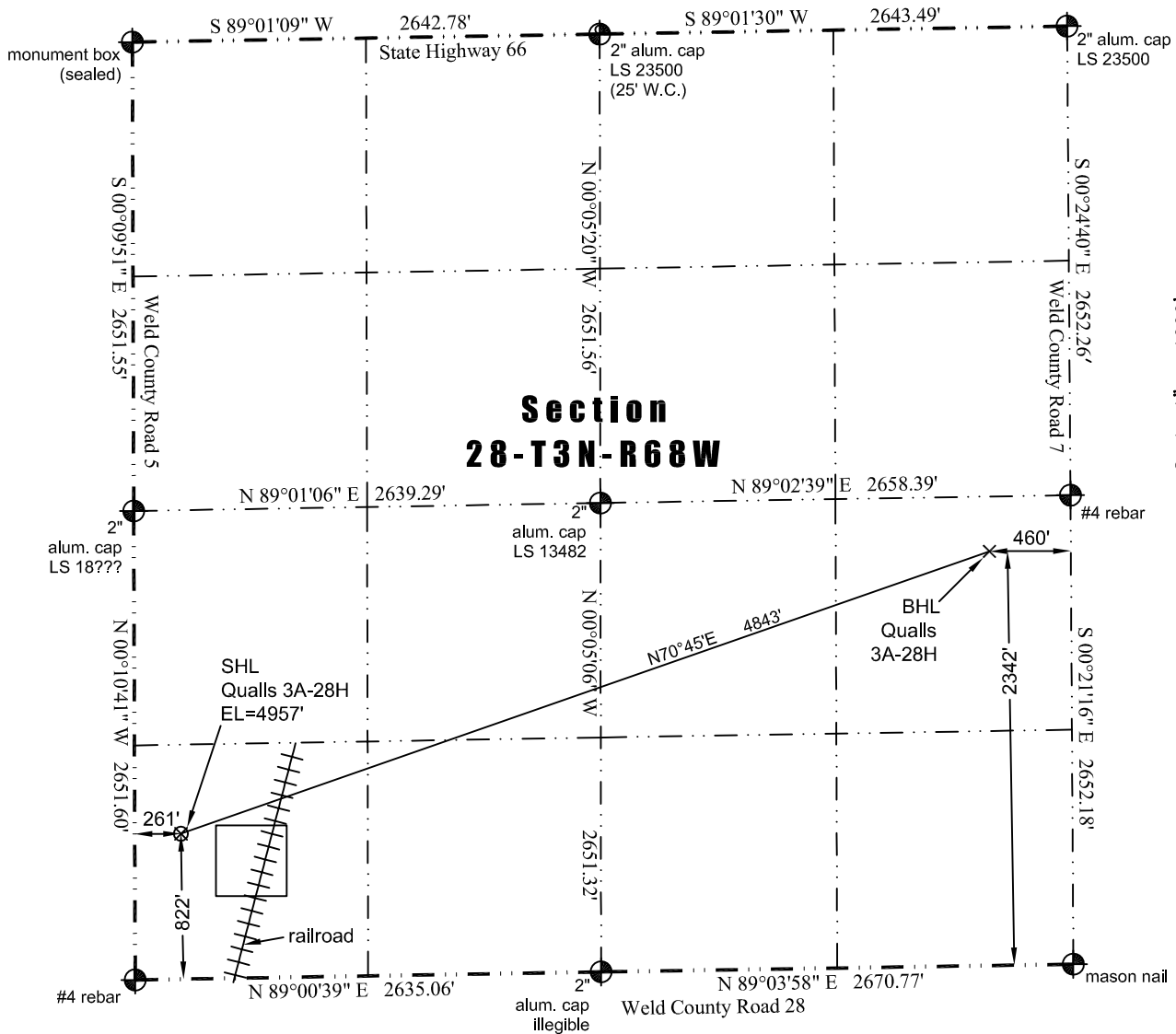


JR Land Surveying, LLC  
 8114 Northstar Drive  
 Windsor, Colorado 80528  
 P. 970-576-4641

# WELL LOCATION CERTIFICATE

*THIS MAP DOES NOT REPRESENT A BOUNDARY SURVEY*



Scale 1" = 1000'

approximate scale

LEGEND  
 — found survey monument  
 — calculated dimension  
 (c)

In accordance with a request from Jay Knutson of EnCana Oil & Gas (USA) Inc., JR Land Surveying, LLC has determined the location of the **Qualls 3A-28H** well site to be SHL: 822' FSL and 261' FWL, (BHL: 2342' FSL and 460' FEL), as measured at ninety (90) degrees from the section lines of Sections 28, Township 3 North, Range 68 West of the 6th Principal Meridian, Weld County Colorado.

**Proposed Surface Hole Data:**  
 Latitude: N 40.19167° (BHL: 40.19598°)  
 Longitude: W 105.01641° (BHL: 105.00001°)  
 PDOP: 1.5

**Nearest:**

Building: 375' southwest	Above Ground Utility: 231' west
Public Road: 248' west	Railroad: 496' southeast
Property Line: 261' west	Well Window: SHL is 198' outside
Existing Well: Hartman #1, 1,267' northwest	

I hereby certify that this Well Location Certificate was prepared by me or under my direct supervision on 1/22/2013 for and on behalf of EnCana Oil & Gas (USA) Inc. That it is not a Land Survey Plat or an Improvement Survey Plat and that it is not to be relied upon for establishment of fences, buildings, or other future improvement lines. **38219**

- Notes:**
- 1) Bearings and distances based on NAD 83 Colorado North State Plane Coordinate. using RTK GPS observations taken 12/12/12 by operator John Rice.
  - 2) Conversion factor to ground (1.000279243).
  - 3) Elevations based on NAVD 88 GPS heights and Geoid 2003 corrections.
  - 4) See Location Drawing for visible improvements within 400 feet of Pad Site.
  - 5) The surface use is a cultivated field.

**NOTICE:** According to Colorado law you must commence any legal action based upon any defect in this W.L.C. within three years after you first discover such defect. In no event may any action based upon any defect in this W.L.C. be commenced more than ten years from this said date of the certification shown hereon.

John Robert McGehee LS#38219  
 Well: Qualls 3A-28H WLC