



Project: ROUTT COUNTY, COLORADO
 Site: DAWSON CREEK 1-25
 Well: DAWSON CREEK 1-25
 Wellbore: DAWSON CREEK 1-25
 Design: DAWSON CREEK 1-25
 Latitude: 40° 27' 1.750 N
 Longitude: 107° 12' 48.121 W
 GL: 6658.20
 KB: WELL @ 6673.20ft (Original Well Elev)
 RIG: Original Well Elev



Weatherford®

WELL DETAILS: DAWSON CREEK 1-25

+N/-S	+E/-W	Northing	Ground Level: Easting	6658.20 Latitude	Longitude	Slot
0.00	0.00	1411558.97	2523194.60	40° 27' 1.750 N	107° 12' 48.121 W	

SECTION DETAILS

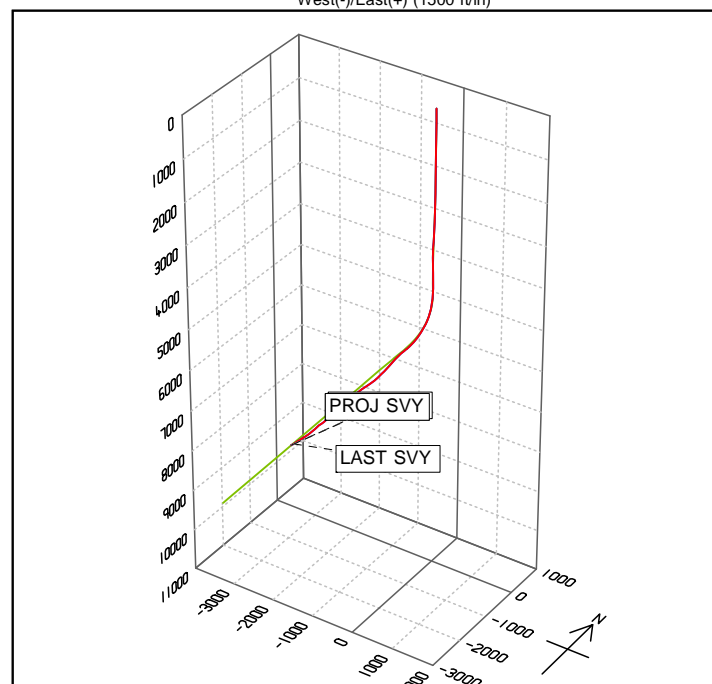
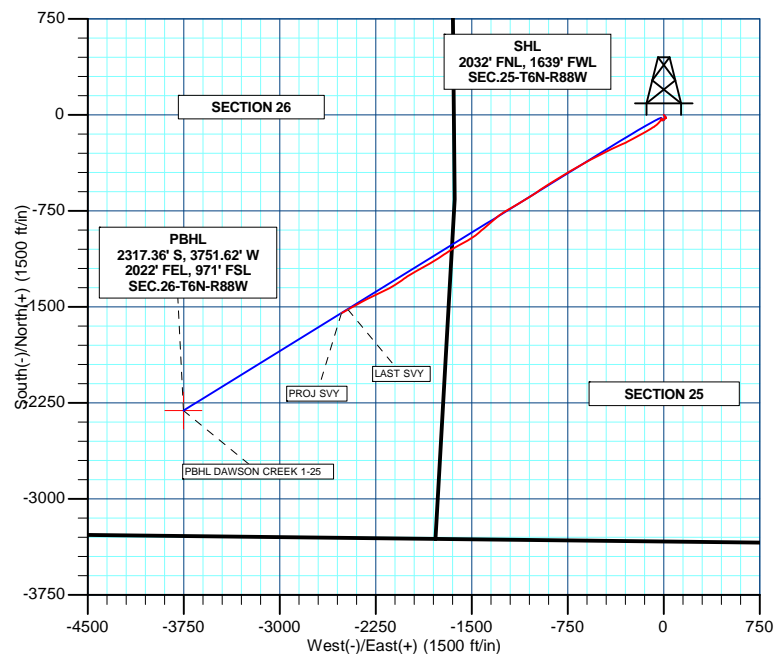
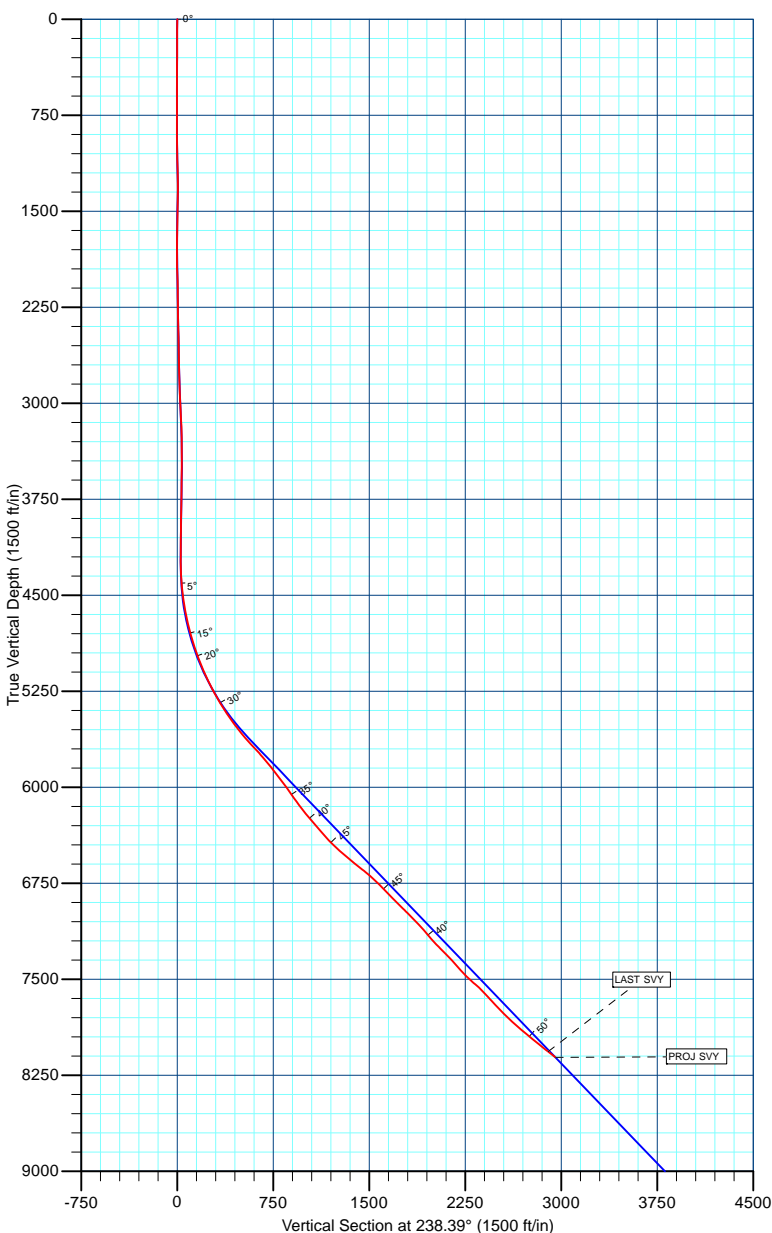
MD	Inc	Azi	TVD	+N/-S	+E/-W	Dleg	TFace	VSect	Annotation
4131.00	1.22	327.40	4129.29	-26.58	-16.98	0.00	0.00	28.39	Start 169.00 hold at 4131.00 MD
4300.00	1.22	327.40	4298.25	-23.55	-18.92	0.00	0.00	28.45	Start DLS 3.00 TFO -90.36
5761.89	43.86	238.31	5621.28	-289.65	-481.05	3.00	-90.36	561.50	Start 5547.41 hold at 5761.89 MD
11309.30	43.86	238.31	9621.00	-2309.08	-3751.82	0.00	0.00	4405.45	TD at 11309.30

WELLBORE TARGET DETAILS (MAP CO-ORDINATES AND LAT/LONG)

Name	TVD	+N/-S	+E/-W	Northing	Easting	Latitude	Longitude	Shape
PBHL DAWSON CREEK 1-25	9621.00	-2309.08	-3751.82	1409322.81	2519398.88	40° 26' 38.929 N	107° 13' 36.648 W	Point

Azimuths to True North
 Magnetic North: 9.95°

Magnetic Field
 Strength: 52664.6snT
 Dip Angle: 66.61°
 Date: 9/17/2012
 Model: BGGM2012



Survey: Survey #1 (DAWSON CREEK 1-25/DAWSON CREEK 1-25)

Created By: TRACY WILLIAMS

Date: 10:37, February 18 2013