

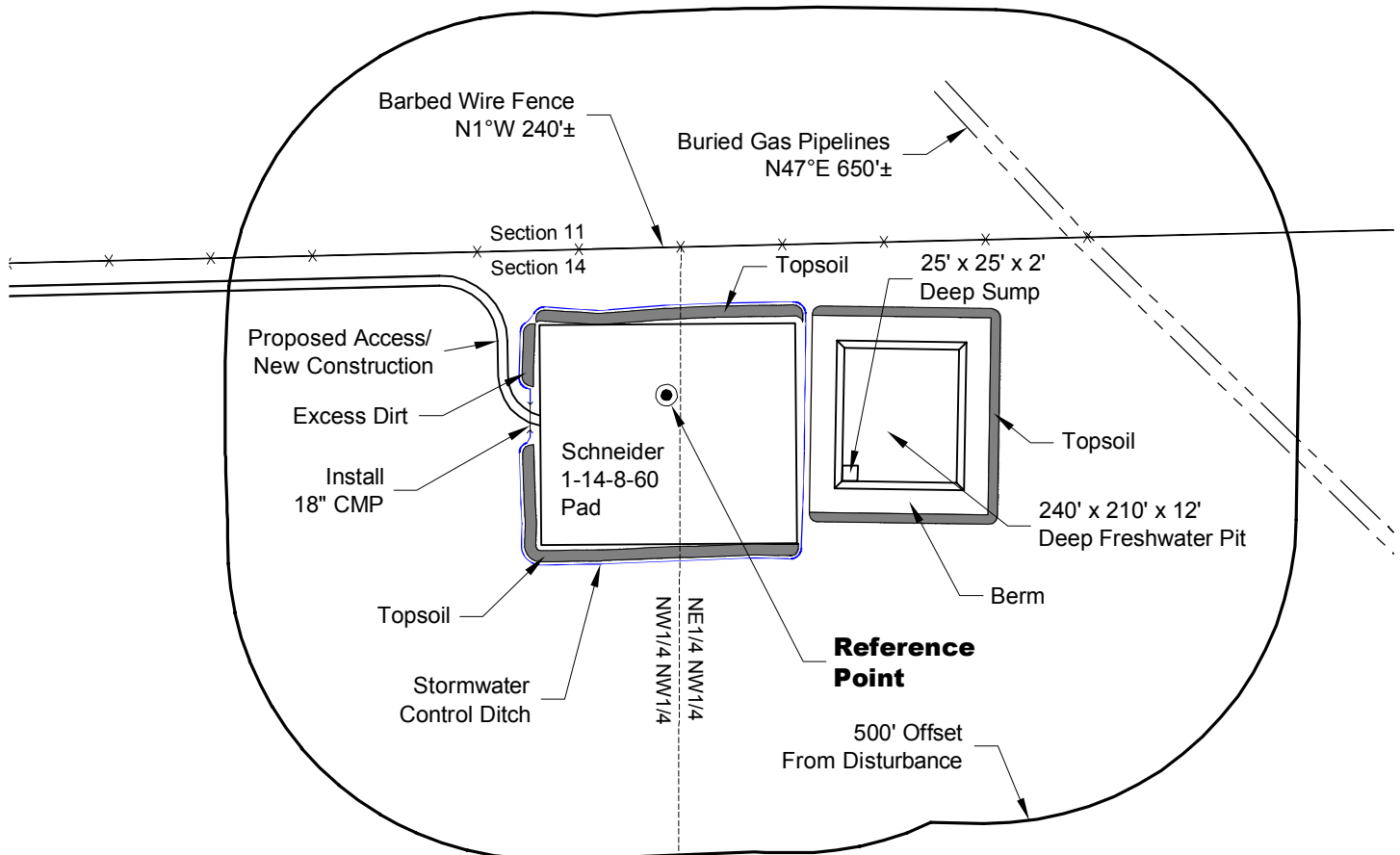
LOCATION DRAWING

VEGETATION:
PASTURE

SURFACE USE:
GRAZING

REFERENCE POINT

LATITUDE: 40.66910
LONGITUDE: -104.06268
FOOTAGE: 240 FNL 1298 FWL
GROUND ELEVATION: 4945.8
PDOP: 2.5 DATE: 10/22/2012
INSTRUMENT OPERATOR:
MARC WOODARD



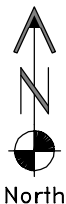
NOTE-DISTANCE TO NEAREST:

Property Line - N 240'
Public Road - WCR 105 - W 1290'±
Building - House N15°W 2.4 Miles±
Railroad - S5°E 29 Miles±
Powerline - W 1330'±

DISTURBANCE ACREAGE:
4.6± DRILLING OPERATIONS
2.3± FRESHWATER STORAGE PIT
1.0± INTERIM RECLAIM

NOTE:
ALL PRODUCTION FACILITIES WILL BE ON PAD.

11/12/12



0 300 600
Graphic Scale in Feet
1" = 300'



CARRIZO OIL & GAS, INC
SCHNEIDER 1-14-8-60 PAD

NW1/4 NW1/4 SECTION 14 T8N R60W
6th PM WELD COUNTY COLORADO