

CONSTRUCTION LAYOUT DRAWING

1 of 2

VEGETATION:
PASTURE

SURFACE USE:
GRAZING

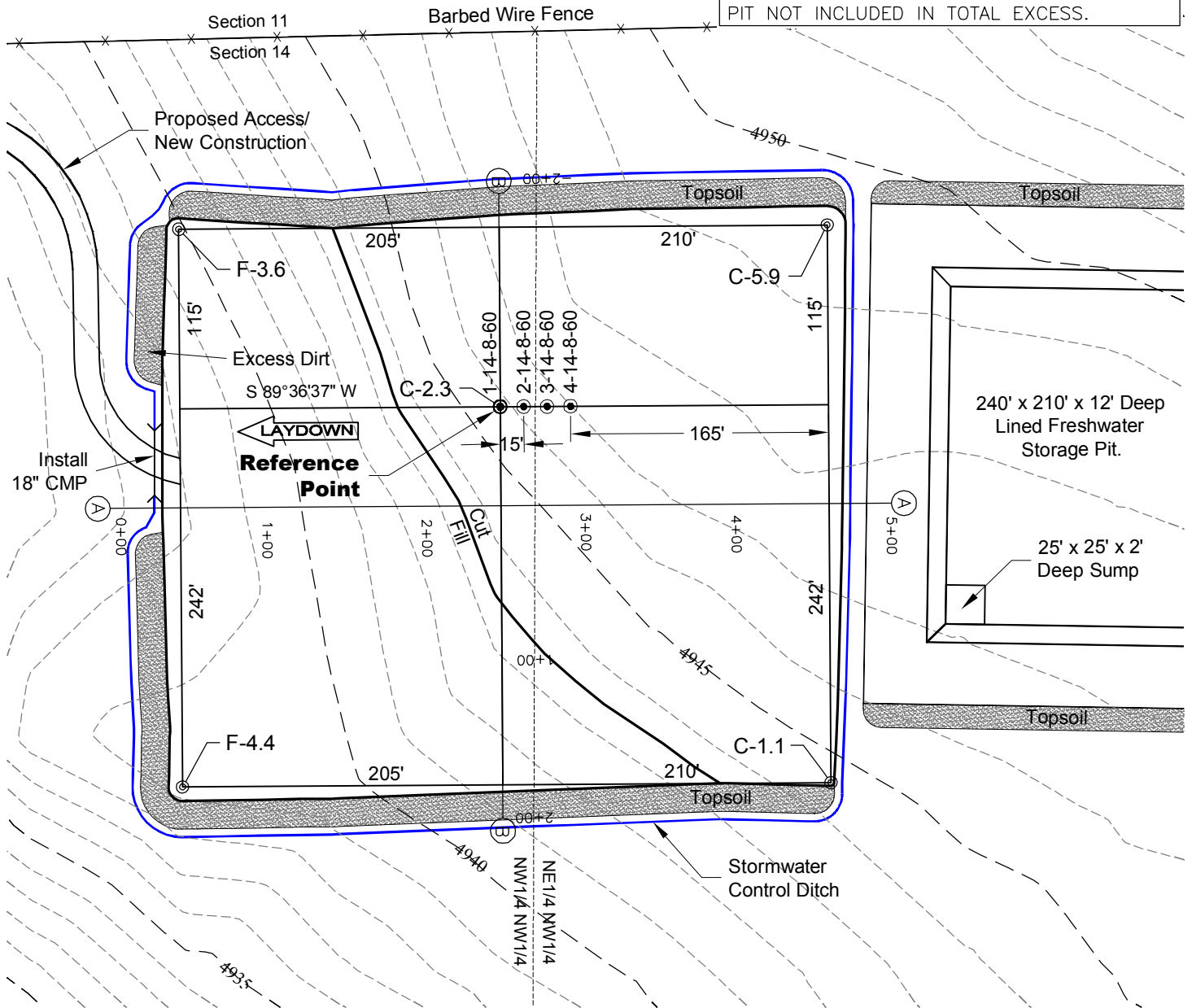
PAD 357'X415' ELEV= 4943.5'

DISTURBED AREA=4.6± ACRES

ESTIMATED DIRT QUANTITIES

CUTx10%	FILL	TOPSOIL	EXCESS
10,130	7,060	2,960	110

NOTE: VOLUMES IN CUBIC YARDS. TOPSOIL INCLUDED IN VOLUMES AT A DEPTH OF 6". PIT NOT INCLUDED IN TOTAL EXCESS.



NOTE:

10% ALLOWANCE IS MADE FOR SOIL EXPANSION.

11/12/12

GEO SURV

LAND SURVEYING AND MAPPING
LAFAYETTE - WINTER PARK
Ph 303 666 0379 Fx 303 665 6320

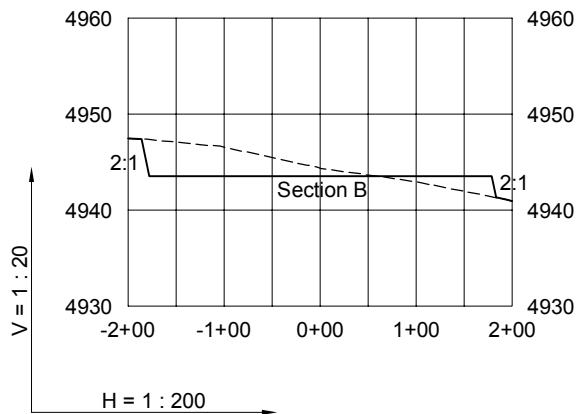
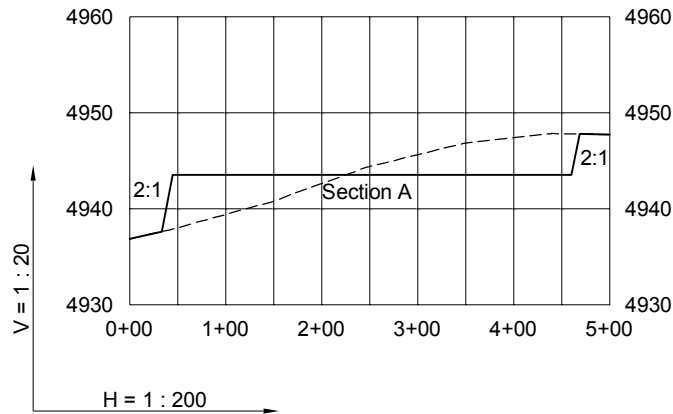
CARRIZO OIL & GAS, INC
SCHNEIDER 1-14-8-60 PAD

NW1/4 NW1/4 SECTION 14 T8N R60W
6th PM WELD COUNTY COLORADO

DWG: G:\GEO SURV\WeitzNorth\Corriza 110004\Wellplate\Schneider 1-14-8-60 F2A R1.dwg USER: WTC DATE: Nov 12, 2012 2:20pm

CONSTRUCTION LAYOUT DRAWING

2 of 2



11/12/12

----- Existing Ground
 _____ Proposed Grade



LAND SURVEYING AND MAPPING
LAFAYETTE - WINTER PARK
 Ph 303 666 0379 Fx 303 665 6320

CARRIZO OIL & GAS, INC
SCHNEIDER 1-14-8-60 PAD

NW1/4 NW1/4 SECTION 14 T8N R60W
6th PM WELD COUNTY COLORADO