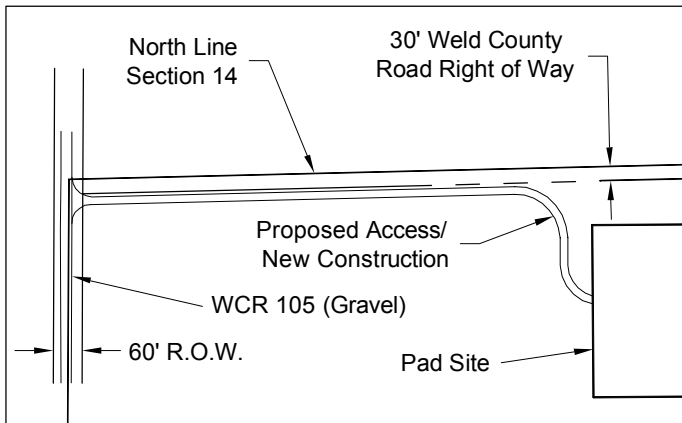
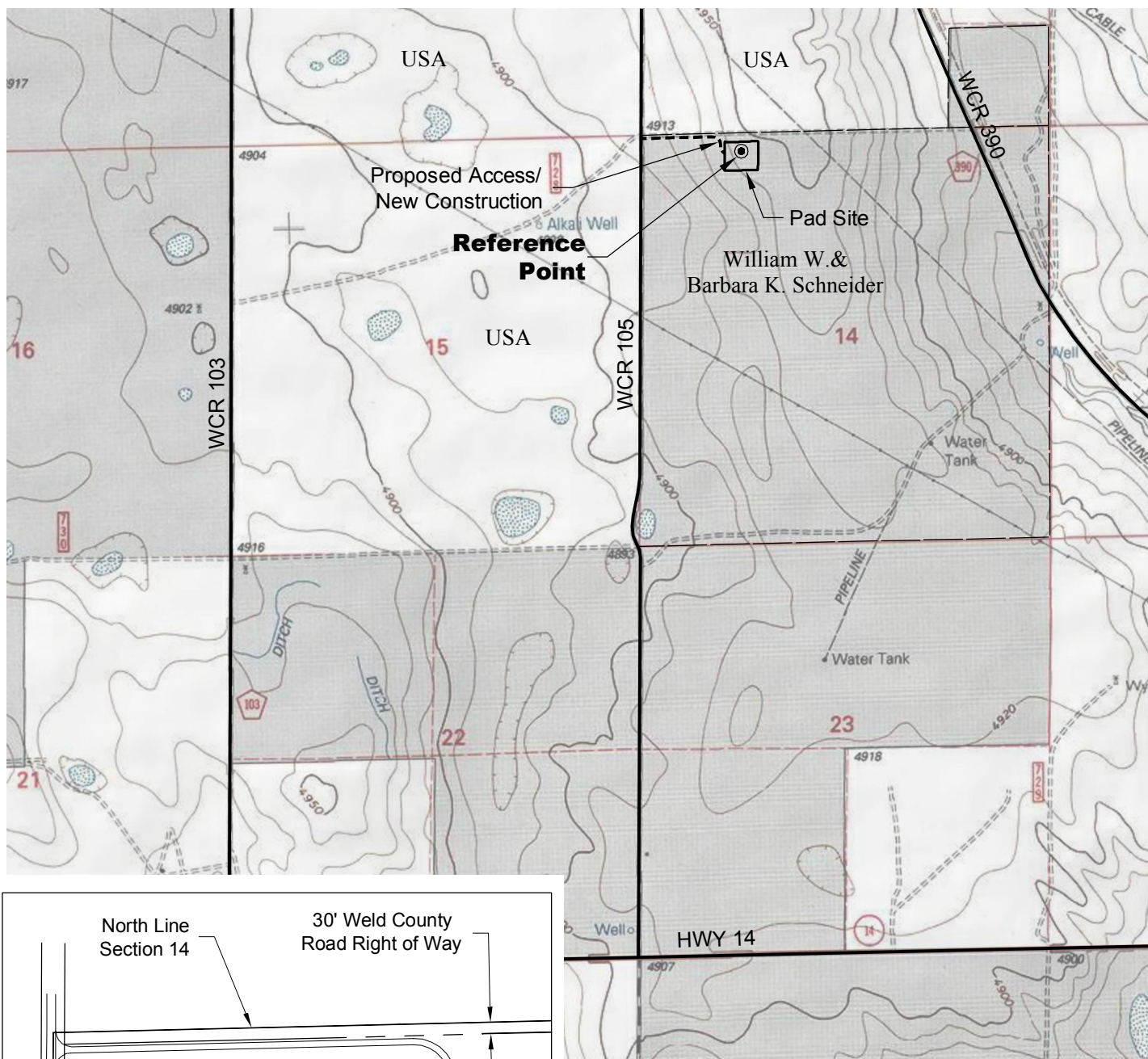


ACCESS ROAD MAP



Access Detail 1"=400'

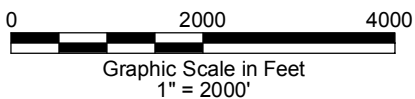
DRIVING DIRECTIONS:

MP 0.0 - Intersection of Highway 14 a.k.a. WCR 90 & Highway 392 a.k.a. WCR 77 in Briggsdale; East on Highway 14
 MP 13.9 - Left on WCR 105;
 MP 15.9 - Right on access to Schneider 1-14-8-60 Pad
 MP 16.2 - Schneider 1-14-8-60 Pad

11/12/12



North



LAND SURVEYING AND MAPPING
 LAFAYETTE - WINTER PARK
 Ph 303 666 0379 Fx 303 665 6320

CARRIZO OIL & GAS, INC
SCHNEIDER 1-14-8-60 PAD

NW1/4 NW1/4 SECTION 14 T8N R60W
6th PM WELD COUNTY COLORADO