



# ROBINSON SERVICES

Oil Field & Construction Staking

P.O. Box 2324

Garden City, Kansas 67846

Office/Fax: (620) 276-6159

Cell: (620) 272-1499

101104-Z

PLAT NO.

5112

INVOICE NO.

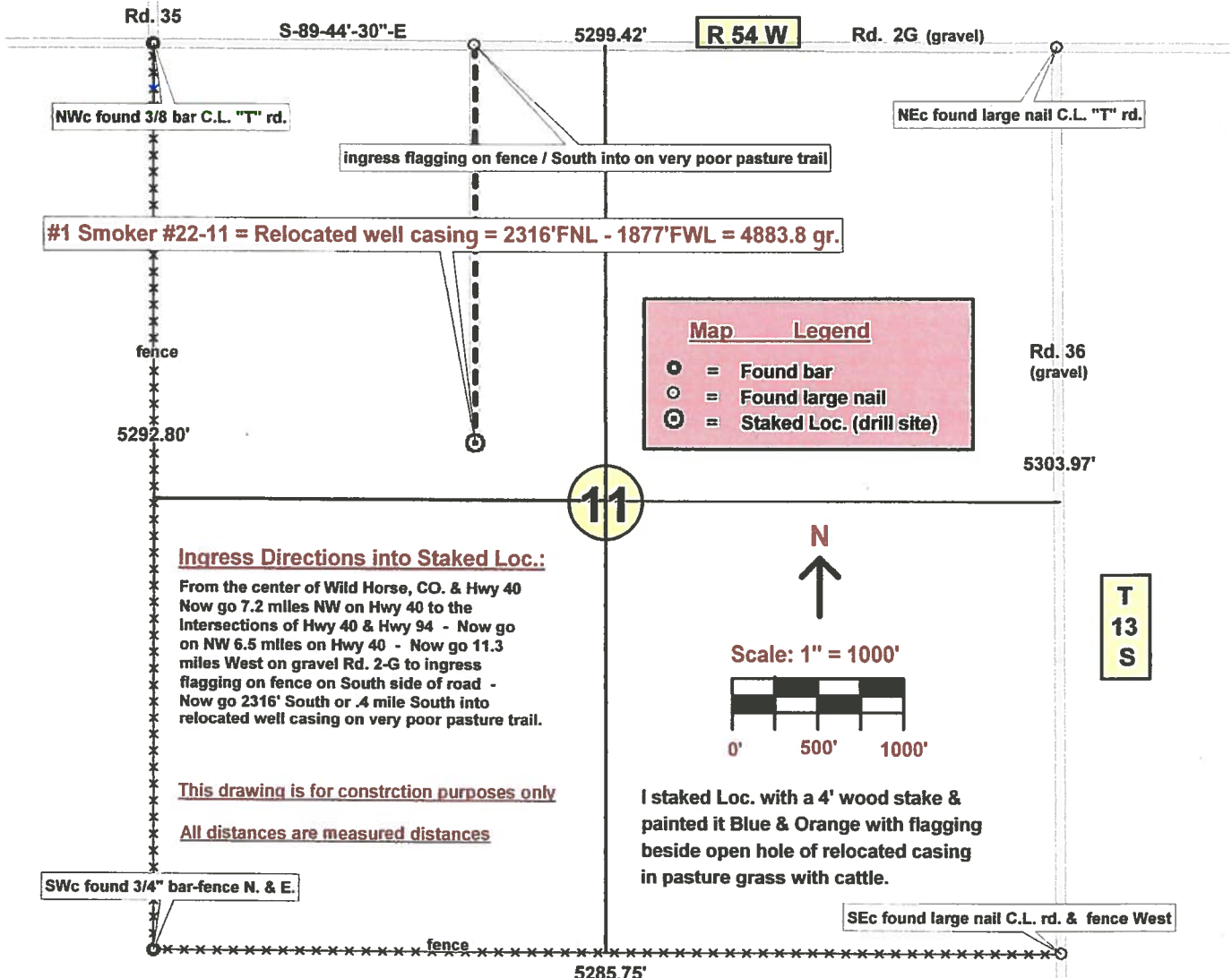
Robinson Services of Garden City, Kansas has in accordance with a request from Kerry Halde for Wiepking Fulerton Energy, LLC determined the location of the "#1 Smoker 22-11" to be 2316'FNL - 1877'FWL of section 11, Township 13 South, Range 54 West of the 6<sup>th</sup> Principal Meridian, Lincoln County, Colorado.

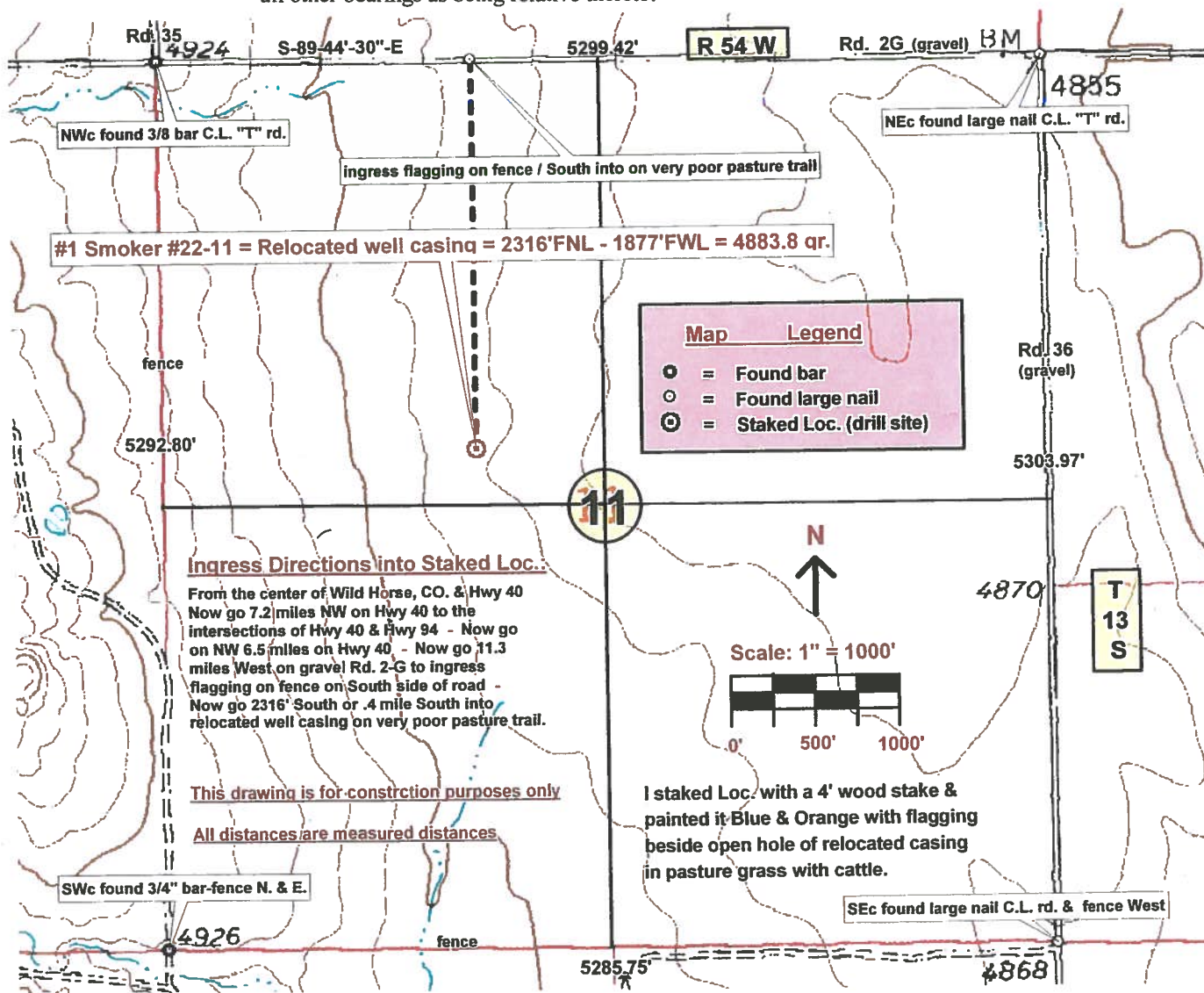
**Date:** On 10/11/04 the loc. was measured & map drawn **By:** Burt West

**Basis of Elevation Spot:** From the topo elevation of 4924' at the NW corner of sec. 11-13s-54w

**Notes:** Location falls in pasture grass & weeds with cattle grazing  
There are NO improvements within 200' of relocated well casing  
The ground elevation at relocated well casing = 4883.8 gr.

**Basis of Bearings:** Bearings were determined based upon the West line of Section 11 as bearings North & South with all other bearings as being relative thereto.





**Ingress map for (owwo)  
Wiepking - Fulerton Energy, LLC  
#1 Smoker 22-11  
NW/4 of section 11-13s-54w  
Lincoln County, CO.**

**#1 Smoker #22-11 = Relocated well casing = 2316'FNL - 1877'FWL = 4883.8 gr.**

