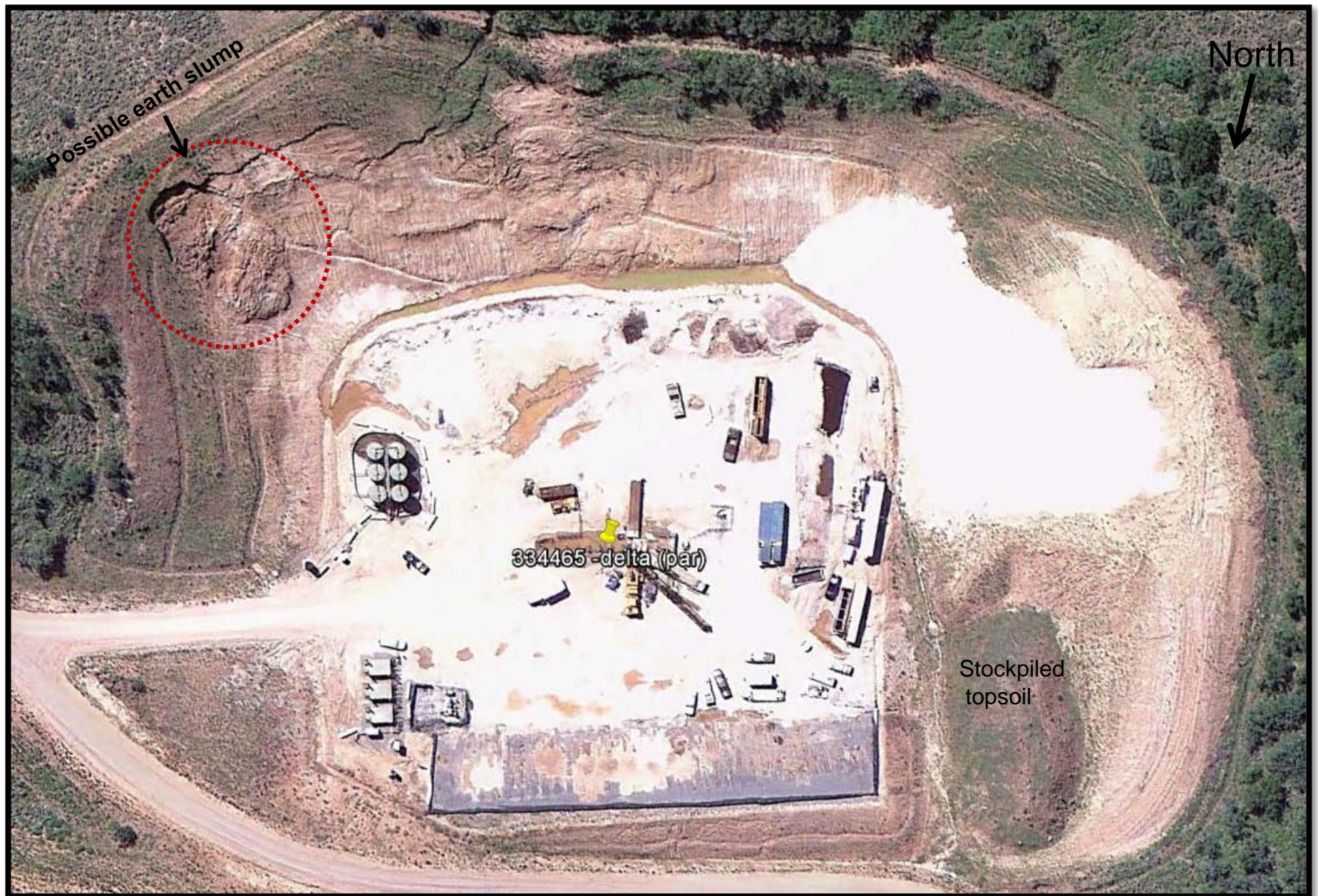


## Piceance Energy “Pad 2-B” Location ID 334465



Google Earth 2011 aerial image. Note erosional & earth slumping features in upper left area of image.



## Piceance Energy “Pad 2-B” Location ID 334465



Google Earth 2011 aerial image. Close-up view of earth slumping feature.



## Piceance Energy “Pad 2-B” Location ID 334465



Viewing east; wellheads, equipment & tank layout & southeastern area of cut slope. Possible slumping along cut slope that was noted in a 2011 aerial image is presently indiscernible due to heavy snow.



Close-up view of cutslope: Some features present, and may represent BMP mitigation, but difficult to assess due to heavy snow. Inspection of location will resume once snowmelt has subsided.



Viewing west @ entrance. Western cutslope & Stockpiled topsoil in background.



Viewing northwest: Diversions & drainage ditch BMPs.