

NOBLE ENERGY, INC.
McCLELLAN LG09-72HN
LOCATED IN WELD COUNTY, COLORADO
SECTION 9, T8N, R59W, 6th P.M.

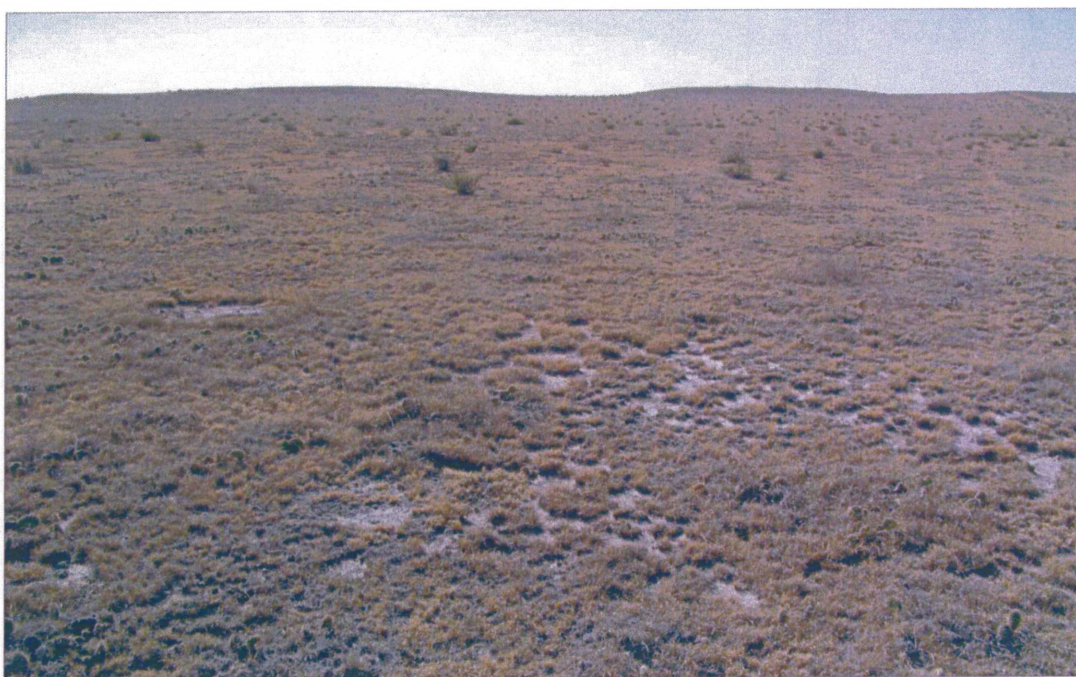


PHOTO: VIEW OF REFERENCE AREA

CAMERA ANGLE: WESTERLY



- Since 1964 -

UELS Uintah Engineering & Land Surveying
85 South 200 East Vernal, Utah 84078
(435) 789-1017 * FAX (435) 789-1813

REFERENCE AREA
PHOTO

11 **08** **12**
MONTH DAY YEAR

TAKEN BY: J.H. DRAWN BY: B.D.H. REVISED: 00-00-00

PHOTO
REF