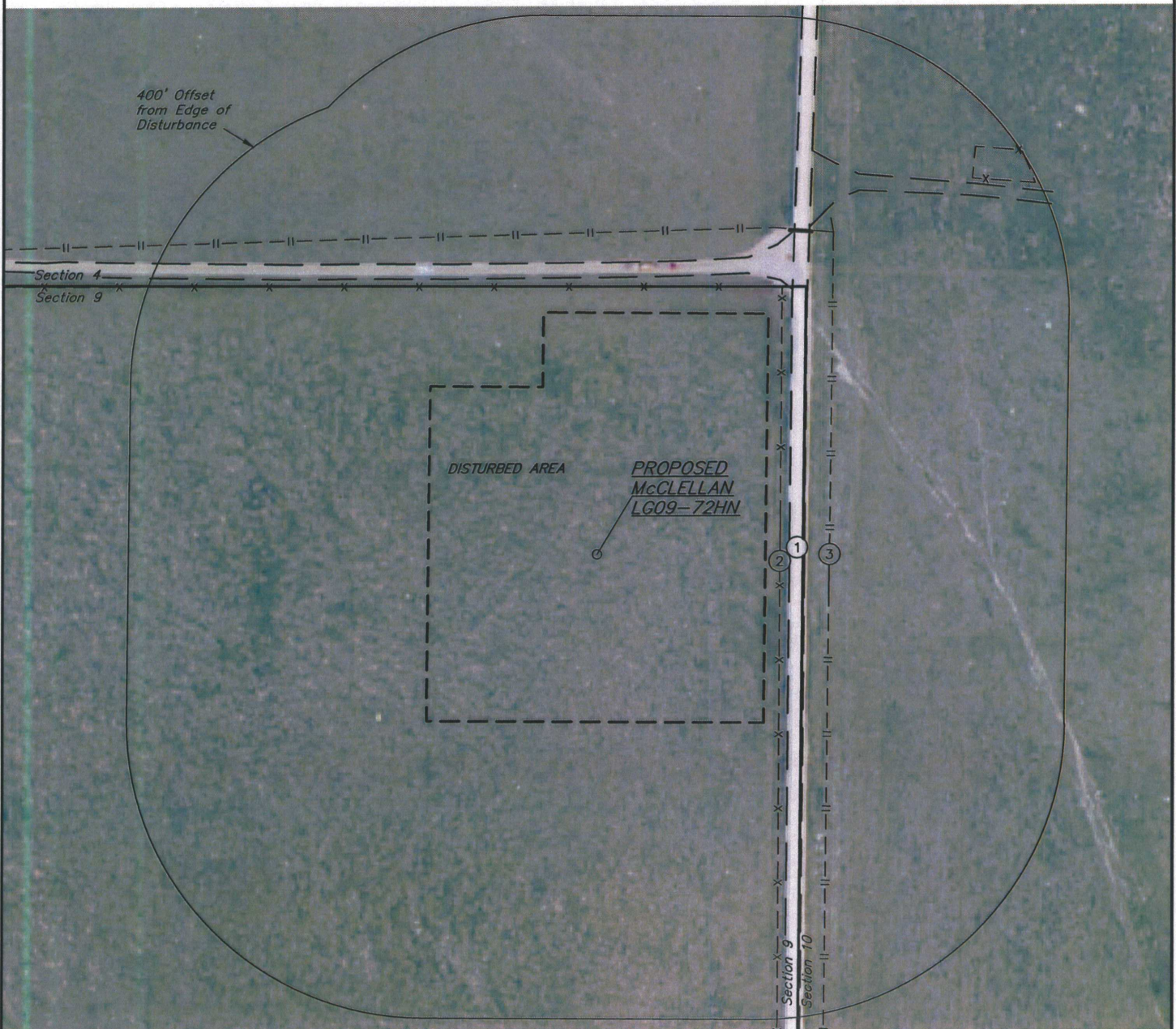


NOBLE ENERGY, INC.

LOCATION DRAWING

McCLELLAN LG09-72HN
SECTION 9, T8N, R59W, 6th P.M.

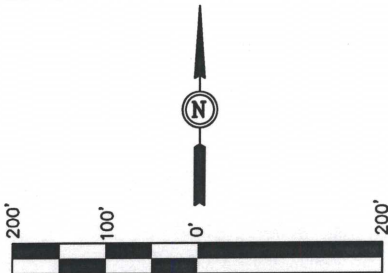
DATE: 11-08-12
DRAWN BY: J.M.H.



NOTE:
DIRECTION AND DISTANCE TO IMPROVEMENTS AND NEAREST FEATURES ARE FROM PROPOSED McCLELLAN LG09-72HN.

IMPROVEMENTS:

- ① ROAD 257' E, 370' N, 600' NE
- ② FENCE 244' E, 360' N, 710' NE
- ③ UNDERGROUND GAS LINE 307' E, 432' N



NEAREST FEATURE: BUILDING 5275' S, PUBLIC ROAD
257' E (CR 115), ABOVE GROUND UTILITY 5280' +,
RAILROAD 5280' +, PROPERTY LINE 275' E

UINTAH ENGINEERING & LAND SURVEYING
85 So. 200 East * Vernal, Utah 84078 * (435) 789-1017