

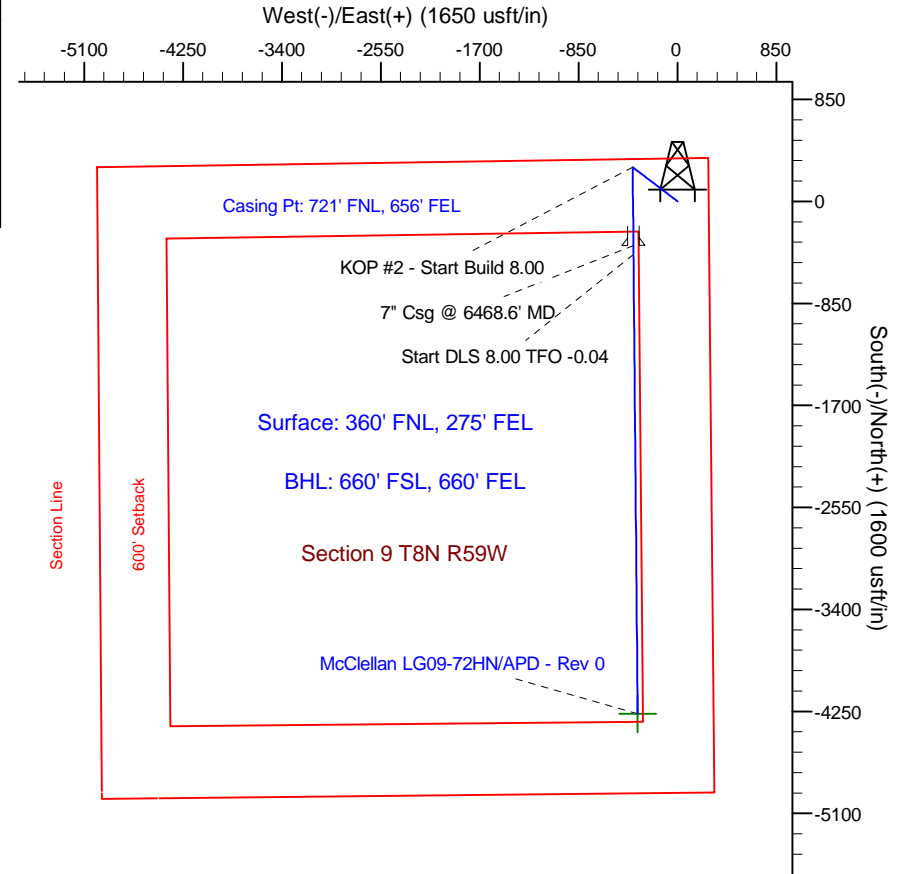
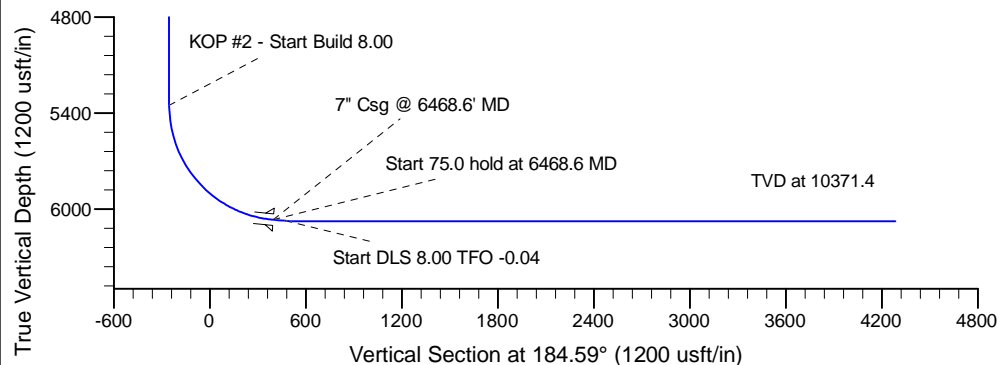
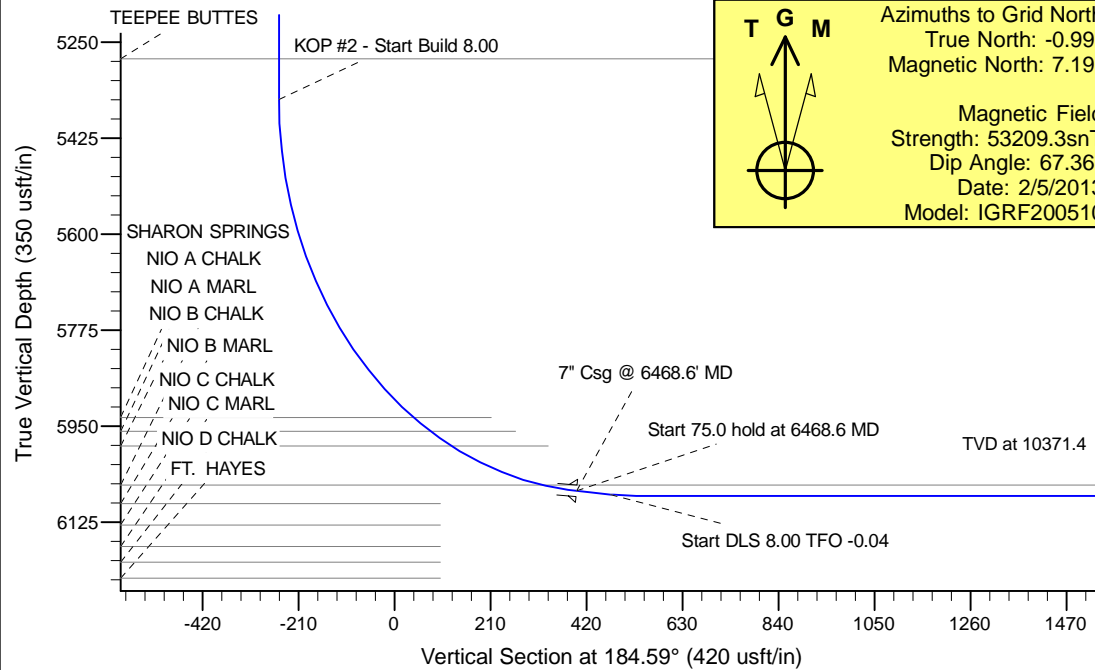
Project: Wattenberg Field
 Site: LG (Sec.9-T08N-59W) Weld County, CO
 Well: McClellan LG09-72HN
 Wellbore: Original Drilling
 Design: APD - Rev 0

Northern Region Drilling

Geodetic System: US State Plane 1983
 North American Datum 1983
 Ellipsoid: GRS 1980
 Zone: Colorado Northern Zone
 System Datum: Mean Sea Level
 Datum:

SECTION DETAILS

Sec	MD	Inc	Azi	TVD	+N/-S	+E/-W	Dleg	TFace	VSect	Target
1	0.0	0.00	0.00	0.0	0.0	0.0	0.00	0.00	0.0	
2	1800.0	0.00	0.00	1800.0	0.0	0.0	0.00	0.00	0.0	
3	2499.8	14.00	306.51	2492.9	50.6	-68.4	2.00	306.51	-45.0	
4	3777.0	14.00	306.51	3732.1	234.4	-316.6	0.00	0.00	-208.3	
5	4476.8	0.00	0.00	4425.0	285.0	-385.0	2.00	180.00	-253.3	
6	5406.1	0.00	0.00	5354.3	285.0	-385.0	0.00	0.00	-253.3	
7	6468.6	85.00	179.47	6067.8	-368.7	-379.0	8.00	179.47	397.9	
8	6543.6	85.00	179.47	6074.3	-443.5	-378.3	0.00	0.00	472.3	
9	6606.1	90.00	179.47	6077.0	-505.9	-377.7	8.00	-0.04	534.5	
10	10371.4	90.00	179.47	6077.0	-4271.0	-342.6	0.00	0.00	4284.7	McClellan LG09-72HN BHL 660'FSL & 660'FEL



WELL DETAILS: McClellan LG09-72HN			
Ground Level: 4829.0			
Northing	Easting	Latitude	Longitude
1495346.37	3423526.02	40° 40' 59.189 N	103° 58' 22.310 W
Plan: APD - Rev 0 (McClellan LG09-72HN/Original Drilling)			
Created By: Carrie Willers		Date: 11:19, February 06 2013	
OK to submit with 2A as per Noble Drilling 2/6/13 5:36			