

# WELL LOCATION PLAT T8N, R59W, 6th P.M.

NOBLE ENERGY, INC.

Well location, McCLELLAN LG09-72HN, located as shown in the NE 1/4 NE 1/4 of Section 9, T8N, R59W, 6th P.M., Weld County, Colorado.

2011 Private Alum Cap,  
Flush W/ Ground

2011 Private Alum Cap,  
Flush W/ Ground

2010 UELS Alum.  
Cap, 0.3' Below  
Ground

S89°46'07"E - 2627.66' (Meas.)

S89°45'46"E - 2627.55' (Meas.)

McCLELLAN LG09-72HN  
Elev. Ungraded Ground = 4829'

## BASIS OF ELEVATION

SPOT ELEVATION LOCATED AT THE NORTHEAST CORNER OF SECTION 15, T9N, R58W, 6th P.M. TAKEN FROM THE GATEHOOK SPRING, QUADRANGLE, COLORADO, WELD COUNTY, 7.5 MINUTE QUAD (TOPOGRAPHIC MAP) PUBLISHED BY THE UNITED STATES DEPARTMENT OF THE INTERIOR, GEOLOGICAL SURVEY. SAID ELEVATION IS MARKED AS BEING 4679 FEET.

## BASIS OF BEARINGS

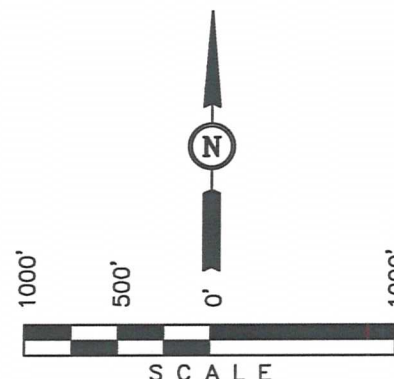
BASIS OF BEARINGS IS A G.P.S. OBSERVATION.

NOTE:  
SEE LOCATION DRAWING FOR  
EXISTING IMPROVEMENTS WITHIN 400'  
OF THE PROPOSED DISTURBANCE.

2012 Private Alum Cap,  
0.1' High

2012 UELS Alum.  
Cap, 0.5' Below Ground

PROPERTY  
LINE



## CERTIFICATE

THIS IS TO CERTIFY THAT THE ABOVE PLAT WAS PREPARED FROM FIELD NOTES OF ACTUAL SURVEYS MADE BY ME OR UNDER MY SUPERVISION AND THAT THE SAME ARE TRUE AND CORRECT TO THE BEST OF MY KNOWLEDGE AND BELIEF.

REGISTERED LAND SURVEYOR  
REGISTRATION NO. 17492  
STATE OF COLORADO  
11-08-12

UELS Alum.  
Cap, 0.3' High

2012 UELS Alum.  
Cap, 0.3' High

Section Corner  
Re-Established Using  
Reference Markers  
(Not Set on Ground)  
Point in Cattle Guard

## LEGEND:

- └─┘ = 90° SYMBOL
- = PROPOSED WELL HEAD.
- ▲ = SECTION CORNERS LOCATED.
- △ = SECTION CORNERS RE-ESTABLISHED. (Not Set on Ground.)

## FEATURE TABLE

EXISTING FEATURE	DIRECTION	LENGTH
PROPERTY LINE	EAST	275'

PDOP = 1.3

NAD 83 (TARGET BOTTOM HOLE)	NAD 83 (SURFACE LOCATION)
LATITUDE = 40°40'17.05" (40.671403)	LATITUDE = 40°40'59.19" (40.683108)
LONGITUDE = 103°58'27.71" (103.974364)	LONGITUDE = 103°58'22.31" (103.972864)

UINTAH ENGINEERING & LAND SURVEYING  
85 SOUTH 200 EAST - VERNAL, UTAH 84078  
(435) 789-1017

SCALE 1" = 1000'	DATE SURVEYED: 09-05-12	DATE DRAWN: 11-08-12
PARTY JEREMY HARRIS C.M. J.M.H.	REFERENCES G.L.O. PLAT	
WEATHER WARM	FILE NOBLE ENERGY, INC.	

# SITE SKETCH

## T8N, R59W, 6th P.M.

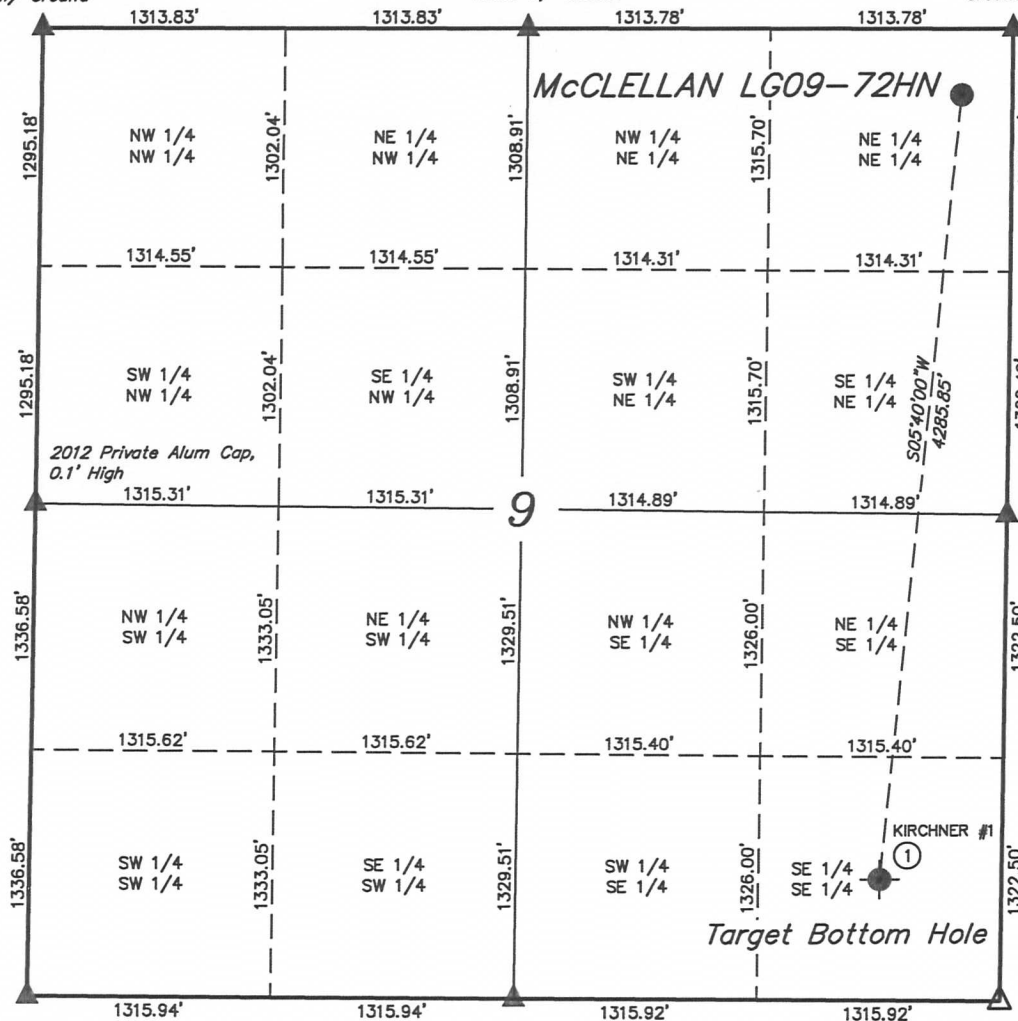
NOBLE ENERGY, INC.

Well location, McCLELLAN LG09-72HN, located as shown in the NE 1/4 NE 1/4 of Section 9, T8N, R59W, 6th P.M., Weld County, Colorado.

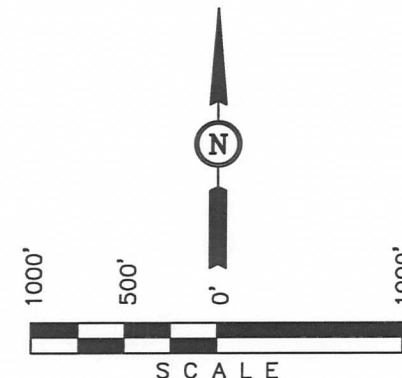
2011 Private Alum Cap,  
Flush W/ Ground

2011 Private Alum Cap,  
Flush W/ Ground

2010 UELS Alum.  
Cap, 0.3' Below  
Ground



2012 UELS Alum.  
Cap, 0.5' Below Ground



### LEGEND:

- ▲ = SECTION CORNERS LOCATED.
- = PROPOSED WELL HEAD.
- = TARGET BOTTOM HOLE
- △ = SECTION CORNERS RE-ESTABLISHED.  
(Not Set on Ground.)
- ⊙ = ABANDONED WELLS

UELS Alum.  
Cap, 0.3' High

2012 UELS Alum.  
Cap, 0.3' High

Section Corner  
Re-Established Using  
Reference Markers  
(Not Set on Ground)  
Point in Cattle Guard

UINTAH ENGINEERING & LAND SURVEYING  
85 SOUTH 200 EAST - VERNAL, UTAH 84078  
(435) 789-1017

	WELL NAME	QTR-QTR	FOOTAGES	LATITUDE	LONGITUDE	ELEVATION	PDOP
1	KIRCHNER #1	SE 1/4 SE 1/4	FROM COGCC DATABASE	40.671285°	103.974369°	UNKNOWN	N.A.

SCALE 1" = 1000'	DATE SURVEYED: 09-05-12	DATE DRAWN: 11-08-12
PARTY JERREMY HARRIS C.M. J.M.H.	REFERENCES G.L.O. PLAT	
WEATHER WARM	FILE NOBLE ENERGY, INC.	