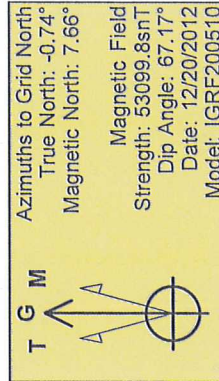
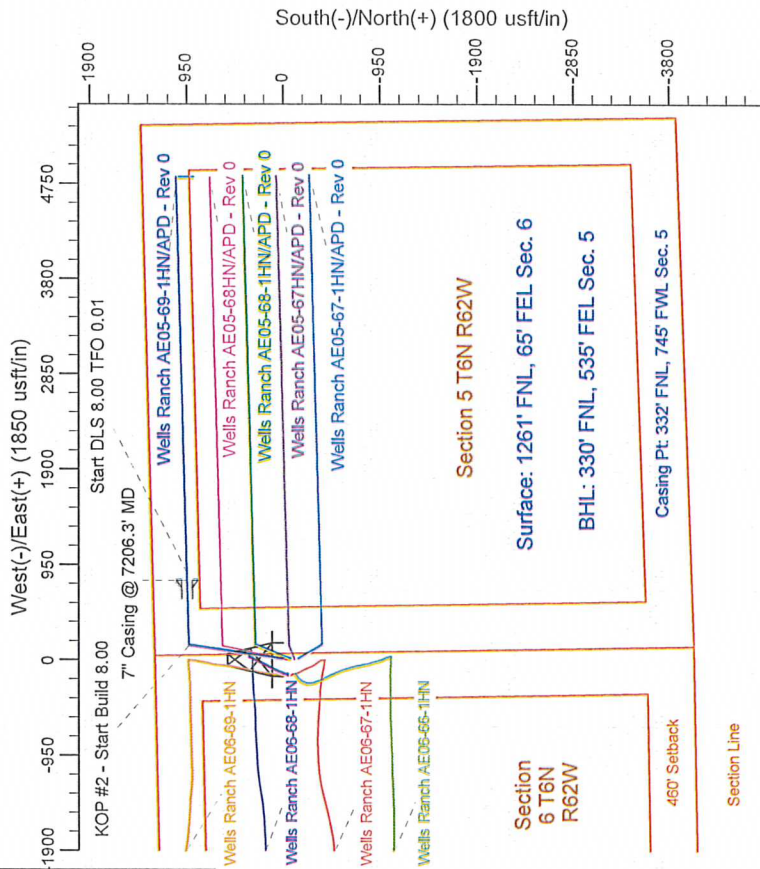
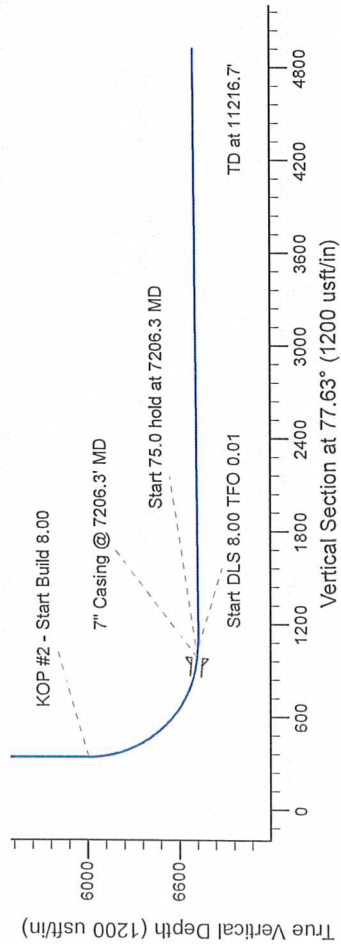
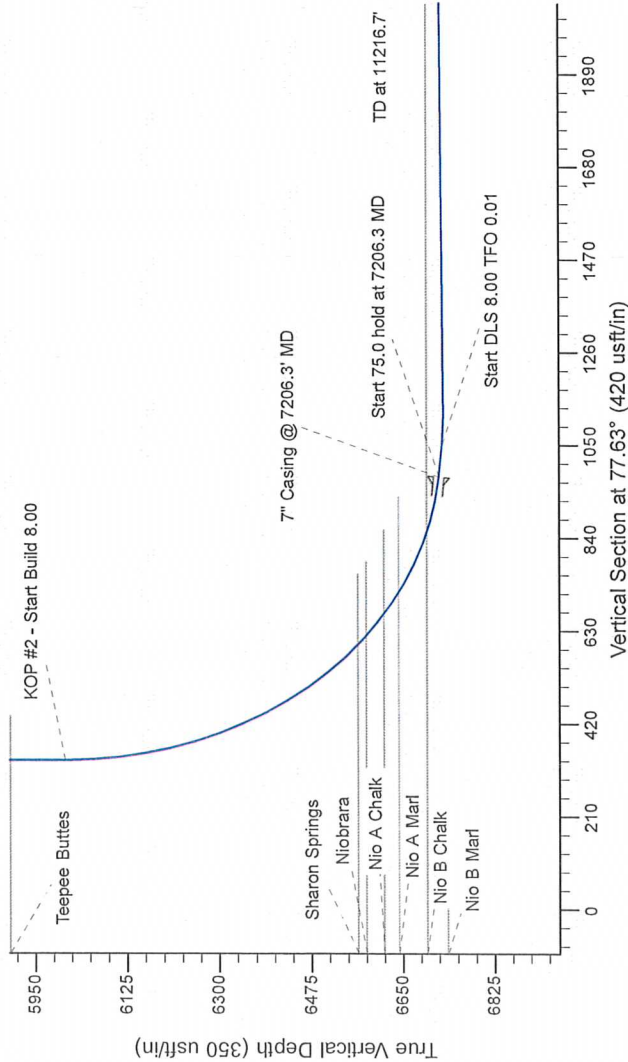


Project: Wattenberg Field
Site: AE (Sec.6-T06N-R62W) Weld County, CO
Well: Wells Ranch AE05-69-1HN
Wellbore: Original Drilling
Design: APD - Rev 0

Geodetic System: US State Plane 1983
 Datum: North American Datum 1983
 Ellipsoid: GRS 1980
 Zone: Colorado Northern Zone
 System Datum: Mean Sea Level

SECTION DETAILS										
Sec	MD	Inc	Azi	TVD	+N+S	+E+W	Dleg	TFace	VSeet	Target
1	0.0	0.00	0.00	0.0		0.0	0.00	0.00	0.0	
2	1200.0	0.00	0.00	1200.0	0.0	0.0	0.00	0.00	0.0	
3	1320.2	18.00	8.55	1908.4	111.0	16.7	2.50	8.55	40.1	
4	4240.0	18.00	8.55	4114.6	820.0	123.3	0.00	0.00	396.2	
5	4560.2	0.00	0.00	4823.0	931.0	140.0	2.50	180.00	336.2	
6	6143.8	0.00	0.00	6006.6	931.0	140.0	0.00	0.00	336.2	
7	7206.3	85.00	88.49	6720.1	948.2	793.6	8.00	88.49	1978.3	
8	7281.3	85.00	88.49	6726.6	950.1	868.2	0.00	0.00	1051.7	
9	7348.7	90.40	88.50	6729.3	951.9	936.6	8.00	0.01	1117.8	Wells Ranch AE05-69-11N BHL 330' FNL 535' FEL
10	11216.7	90.40	88.50	6702.7	1053.4	4502.1	0.00	0.00	4916.3	



WELL DETAILS: Wells Ranch AE05-69-1HN			
Northing	Ground Level:	4933.0	Longitude
1434156.09	Easting	40.519530	-104.356250
3317975.75	Latitude		
Plan: APD - Rev 0 (Wells Ranch AE05-69-1HN/Original Drilling)			
Created By: Carrie Willers		Date: 15:39, January 02 2013	
Checked:		Date:	
Reviewed:		Date:	
Approved:		Date:	