

**HALLIBURTON**

---

---

**WPX ENERGY ROCKY MOUNTAIN LLC-EBUS**

---

---

**FEDERAL RGU 321-36-198  
SULPHUR CREEK  
Rio Blanco County , Colorado**

**Cement Multiple Stages**  
09-Sep-2012

**Post Job Report**

*The Road to Excellence Starts with Safety*

Sold To #: 300721	Ship To #: 2896013	Quote #:	Sales Order #: 9803809
Customer: WPX ENERGY ROCKY MOUNTAIN LLC-EBUS		Customer Rep: Ragsdale, Ted	
Well Name: FEDERAL RGU	Well #: 321-36-198	API/UWI #: 05-103-11874	
Field: SULPHUR CREEK	City (SAP): MEEKER	County/Parish: Rio Blanco	State: Colorado
Lat: N 39.928 deg. OR N 39 deg. 55 min. 40.703 secs.		Long: W 100.346 deg. OR W -101 deg. 39 min. 13.442 secs.	
Contractor: CYCLONE 29	Rig/Platform Name/Num: CYCLONE 29		
Job Purpose: Cement Multiple Stages			
Well Type: Development Well		Job Type: Cement Multiple Stages	
Sales Person: SCOTT, KYLE		Srv Supervisor: DEUSSEN, EDWARD MBU ID Emp #: 485182	

**Job Personnel**

HES Emp Name	Exp Hrs	Emp #	HES Emp Name	Exp Hrs	Emp #	HES Emp Name	Exp Hrs	Emp #
DEUSSEN, EDWARD Eric	0.0	485182	HONE, AARON D	0.0	381285	SIMINEO, JEROD M	0.0	479954
WEAVER, CARLTON Russell	0.0	457698						

**Equipment**

HES Unit #	Distance-1 way	HES Unit #	Distance-1 way	HES Unit #	Distance-1 way	HES Unit #	Distance-1 way
10713212	30 mile	10871245	30 mile	11057895	30 mile	11259886	30 mile
11360871	30 mile	11583916	30 mile	11808831	30 mile	4902	30 mile
4905	30 mile						

**Job Hours**

Date	On Location Hours	Operating Hours	Date	On Location Hours	Operating Hours	Date	On Location Hours	Operating Hours

**TOTAL** Total is the sum of each column separately

**Job**

**Job Times**

Formation Name				Date	Time	Time Zone
Formation Depth (MD) Top		Bottom		Called Out	09 - Sep - 2012	02:00 MST
Form Type	BHST			On Location	09 - Sep - 2012	08:00 MST
Job depth MD	3961. ft	Job Depth TVD	3961. ft	Job Started	09 - Sep - 2012	15:37 MST
Water Depth		Wk Ht Above Floor	5. ft	Job Completed	09 - Sep - 2012	18:44 MST
Perforation Depth (MD) From		To		Departed Loc	09 - Sep - 2012	20:30 MST

**Well Data**

Description	New / Used	Max pressure psig	Size in	ID in	Weight lbm/ft	Thread	Grade	Top MD ft	Bottom MD ft	Top TVD ft	Bottom TVD ft
OPEN HOLE				13.5				1770.	3970.		
OPEN HOLE				14.75					1770.		
SURFACE CASING	Unknown		9.625	8.921	36.		J-55		3961.		

**Sales/Rental/3<sup>rd</sup> Party (HES)**

Description	Qty	Qty uom	Depth	Supplier
PORT. DATA ACQUIS. W/OPTICEM RT W/HES	1	EA		
R/A DENSOMETER W/CHART RECORDER, /JOB,ZI	1	JOB		
ADC (AUTO DENSITY CTRL) SYS, /JOB,ZI	1	JOB		

**Tools and Accessories**

Type	Size	Qty	Make	Depth	Type	Size	Qty	Make	Depth	Type	Size	Qty	Make
Guide Shoe					Packer					Top Plug			
Float Shoe					Bridge Plug					Bottom Plug			
Float Collar					Retainer					SSR plug set			
Insert Float										Plug Container			
Stage Tool										Centralizers			

**Miscellaneous Materials**

Gelling Agt	Conc	Surfactant	Conc	Acid Type	Qty	Conc	%

Treatment Fld	Conc	Inhibitor	Conc	Sand Type	Size	Qty				
<b>Fluid Data</b>										
<b>Stage/Plug #: 1</b>										
Fluid #	Stage Type	Fluid Name	Qty	Qty uom	Mixing Density lbm/gal	Yield ft3/sk	Mix Fluid Gal/sk	Rate bbl/min	Total Mix Fluid Gal/sk	
1	Fresh Water Spacer		20.00	bbl	8.33	.0	.0	.0		
2	1st Stage Lead Cement	VERSACEM (TM) SYSTEM (452010)	660.0	sacks	12.8	1.77	9.34		9.34	
	0.25 lbm	POLY-E-FLAKE (101216940)								
	0.25 %	HR-5, 50 LB SK (100005050)								
	0.125 lbm	TUF FIBER 594, 15 LB BOX (101350514)								
	9.34 Gal	FRESH WATER								
3	1st Stage Tail Cement	VERSACEM (TM) SYSTEM (452010)	200.0	sacks	12.8	1.96	10.95		10.95	
	0.25 lbm	POLY-E-FLAKE (101216940)								
	10.95 Gal	FRESH WATER								
4	Displacement		303.00	bbl	8.33	.0	.0	.0		
5	Mud Displacement		0.00	bbl	.	.0	.0	.0		
6	Fresh Water Spacer		20.00	bbl	8.33	.0	.0	.0		
7	2nd Stage Tail Cement	VERSACEM (TM) SYSTEM (452010)	940.0	sacks	12.8	1.96	10.95		10.95	
	0.25 lbm	POLY-E-FLAKE (101216940)								
	10.95 Gal	FRESH WATER								
8	Displacement		141.00	bbl	8.33	.0	.0	.0		
<b>Calculated Values</b>			<b>Pressures</b>			<b>Volumes</b>				
Displacement		Shut In: Instant		Lost Returns		Cement Slurry		Pad		
Top Of Cement		5 Min		Cement Returns		Actual Displacement		Treatment		
Frac Gradient		15 Min		Spacers		Load and Breakdown		Total Job		
<b>Rates</b>										
Circulating		Mixing		Displacement			Avg. Job			
Cement Left In Pipe		Amount	0 ft	Reason	Shoe Joint					
Frac Ring # 1 @	ID	Frac ring # 2 @	ID	Frac Ring # 3 @	ID	Frac Ring # 4 @	ID			
The Information Stated Herein Is Correct				Customer Representative Signature						

*The Road to Excellence Starts with Safety*

Sold To #: 300721	Ship To #: 2896013	Quote #:	Sales Order #: 9803809
Customer: WPX ENERGY ROCKY MOUNTAIN LLC-EBUS		Customer Rep: Ragsdale, Ted	
Well Name: FEDERAL RGU	Well #: 321-36-198	API/UWI #: 05-103-11874	
Field: SULPHUR CREEK	City (SAP): MEEKER	County/Parish: Rio Blanco	State: Colorado
<b>Legal Description:</b>			
Lat: N 39.928 deg. OR N 39 deg. 55 min. 40.703 secs.		Long: W 100.346 deg. OR W -101 deg. 39 min. 13.442 secs.	
Contractor: CYCLONE 29		Rig/Platform Name/Num: CYCLONE 29	
Job Purpose: Cement Multiple Stages			Ticket Amount:
Well Type: Development Well		Job Type: Cement Multiple Stages	
Sales Person: SCOTT, KYLE		Srv Supervisor: DEUSSEN, EDWARD	MBU ID Emp #: 485182

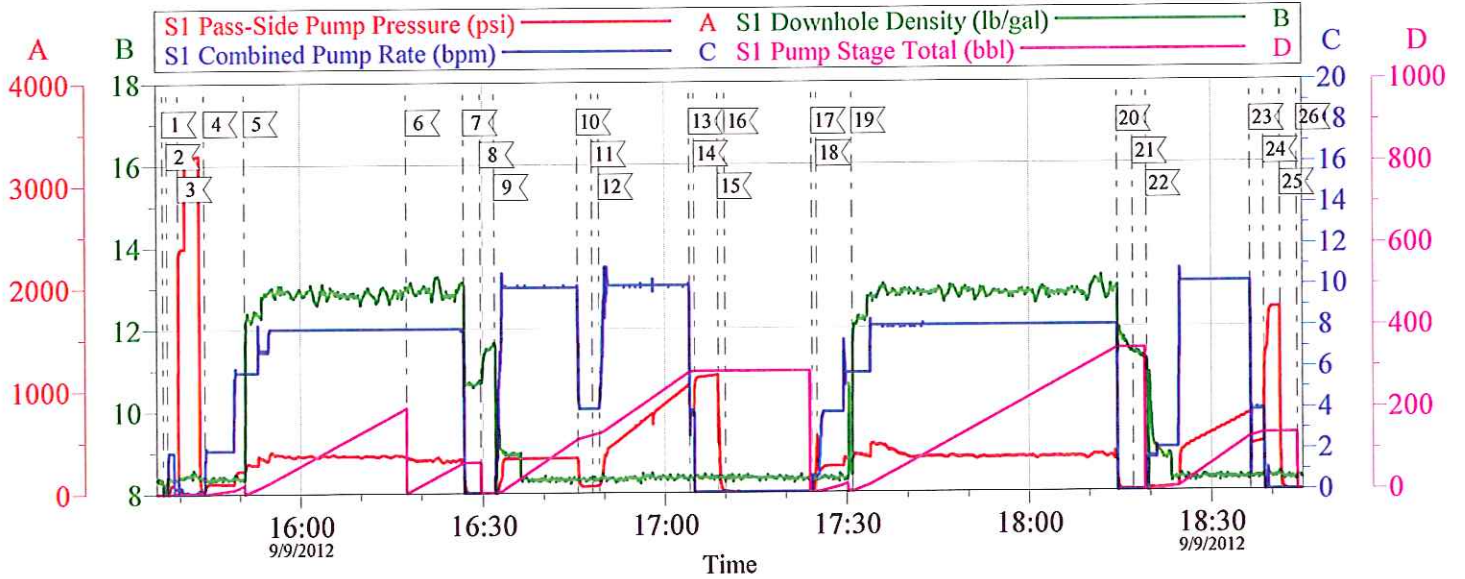
Activity Description	Date/Time	Cht #	Rate bbl/min	Volume bbl		Pressure psig		Comments
				Stage	Total	Tubing	Casing	
Call Out	09/09/2012 02:00							
Pre-Convoy Safety Meeting	09/09/2012 04:30							ALL HES PERSONNEL
Crew Leave Yard	09/09/2012 04:45							1 ELITE, 1 660, 1 PICKUP
Arrive At Loc	09/09/2012 08:00							RIG JUST STARTING TO RUN CASING
Assessment Of Location Safety Meeting	09/09/2012 08:30							
Pre-Rig Up Safety Meeting	09/09/2012 13:50							ALL HES PERSONNEL
Rig-Up Equipment	09/09/2012 14:00							1 HARD LINE TO FLOOR, 2 WATER LINES TO UPRIGHT AND DAY TANK, BULK HOSES TO SILOS AND 660
Pre-Job Safety Meeting	09/09/2012 15:20							ALL HES PERSONNEL AND RIG CREW
Start Job	09/09/2012 15:37							TD 3970, TP 3961, SJ 42.19, MW 9.4, OH 14 3/4" TO 1770', OH 13 1/2" 1770' TO 3970', CSG 9 5/8", 36# J-55, MSC TOOL @ 1821.5' - PV 32, YP 14
Pump Water	09/09/2012 15:37		2	2			90.0	FILL LINES
Pressure Test	09/09/2012 15:39							PRESSURED UP TO 3279 PSI - PRESSURE HELD WELL
Pump Spacer 1	09/09/2012 15:44		6	20			222.0	FRESH WATER SPACER
Activity Description	Date/Time	Cht	Rate bbl/min	Volume bbl		Pressure psig		Comments

		#		Stage	Total	Tubing	Casing	
Pump Lead Cement	09/09/2012 15:50		8	208.1			389.0	660 SKS, 12.8 PPG, 1.77 YIELD, 9.34 GAL/SK - 37.5 LBS TUFF FIBER ADDED TO FIRST 100 BBLs
Pump Tail Cement	09/09/2012 16:17		8	69.8			325.0	200 SKS, 12.8 PPG, 1.96 YIELD, 10.95 GAL/SK
Shutdown	09/09/2012 16:26							
Drop Plug	09/09/2012 16:29							1ST STAGE WIPER PLUG
Pump Displacement	09/09/2012 16:31		10	302.9			340.0	FRESH WATER - SLOW RATE TO 4 BPM AS PLUG PASSES THROUGH TOOL
Slow Rate	09/09/2012 17:04		4	292			755.0	
Bump Plug	09/09/2012 17:04		4	294			755.0	PRESSURED UP TO 1127 PSI.
Check Floats	09/09/2012 17:08							GOT 1.5 BLL BACK
Drop Opening Device For Multiple Stage Cementer	09/09/2012 17:10		0.8	0.8			550.0	FREE FALL OPENING TOOL - WAIT 10 MINUTES FOR BOMB TO FALL. TOOL OPENED AT 550 PSI.
Pump Spacer 1	09/09/2012 17:24		6	20			350.0	FRESH WATER, GOT RETURNS WITH 6 BBLs AWAY. OPEN TOOL AND GO TO SECOND STAGE PER CUSTOMER REQUEST.
Pump Tail Cement	09/09/2012 17:30		8	328.1			340.0	940 SKS, 12.8 PPG, 1.96 YIELD, 10.95 GAL/SK - 37.5 LBS TUFF FIBER ADDED TO LAST 100 BBLs
Shutdown	09/09/2012 18:14							CIRCULATED 70 BBLs CEMENT TO SURFACE FROM FIRST STAGE.
Drop Plug	09/09/2012 18:17							CLOSING TOOL
Pump Displacement	09/09/2012 18:19		10	140.8			755.0	FRESH WATER
Slow Rate	09/09/2012 18:36		4	130			448.0	
Bump Plug	09/09/2012 18:38		4	140			452.0	PRESSURED UP TO 1781 PSI. TO CLOSE MSC

Activity Description	Date/Time	Cht #	Rate bbl/min	Volume bbl		Pressure psig		Comments
				Stage	Total	Tubing	Casing	
Check Floats	09/09/2012 18:41							MSC CLOSED
End Job	09/09/2012 18:44							GOT 110 BBLS CEMENT TO SURFACE / USED 40 LBS SUGAR - ADD 1 HOUR/DID NOT USE BOOSTER PUMP OR HOSES
Post-Job Safety Meeting (Pre Rig-Down)	09/09/2012 18:45							ALL HES PERSONNEL
Rig-Down Equipment	09/09/2012 18:50							
Pre-Convoy Safety Meeting	09/09/2012 20:20							ALL HES PERSONNEL
Crew Leave Location	09/09/2012 20:30							
Other	09/09/2012 20:31							THANK YOU FOR USING HALLIBURTON AND ED DEUSSEN AND CREW

## WPX - RGU 321-36-198

### 9 5/8 SURFACE - 2 STAGE

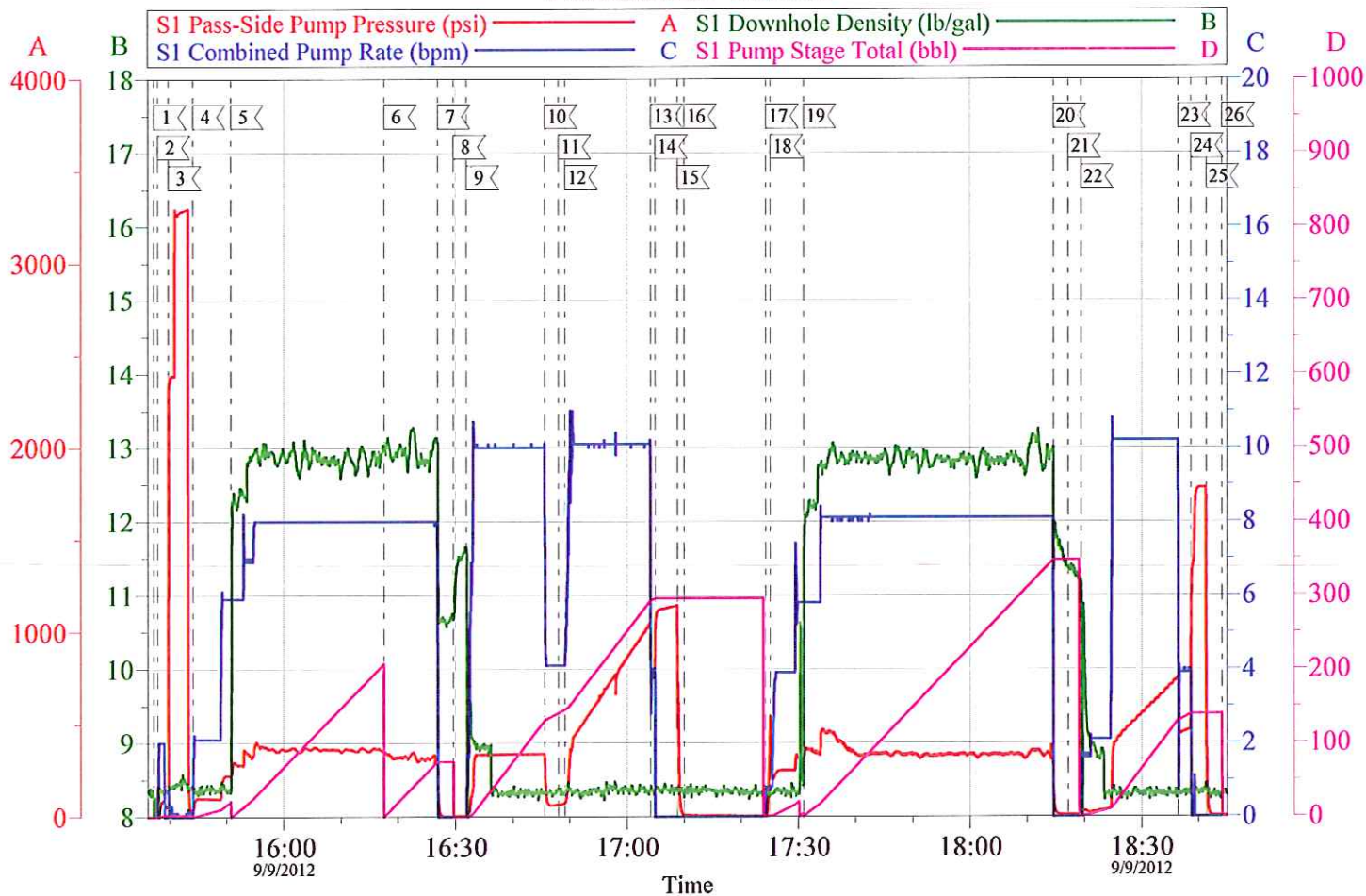


Local Event Log								
1	START JOB	15:37:14	2	FILL LINES	15:37:54	3	TEST LINES	15:39:45
4	PUMP SPACER	15:44:03	5	PUMP 1ST STAGE LEAD	15:50:45	6	PUMP 1ST STAGE TAIL	16:17:33
7	SHUT DOWN	16:26:56	8	DROP WIPER DART	16:29:40	9	PUMP DISPLACEMENT	16:31:58
10	SLOW RATE	16:45:39	11	PASS THROUGH MSC	16:48:04	12	RESUME RATE	16:49:12
13	SLOW RATE	17:04:09	14	BUMP PLUG	17:04:55	15	CHECK FLOATS	17:08:52
16	DROP OPENING PLUG	17:10:00	17	PUMP SPACER	17:24:21	18	OPEN MSC	17:25:07
19	PUMP 2ND STAGE CEMENT	17:30:55	20	SHUT DOWN	18:14:35	21	DROP CLOSING PLUG	18:17:10
22	PUMP DISPLACEMENT	18:19:24	23	SLOW RATE	18:36:26	24	LAND PLUG/ CLOSE MSC	18:38:42
25	RELEASE PRESSURE	18:41:21	26	END JOB	18:44:07			

Customer:	Job Date: 09-Sep-2012	Sales Order #: 9803809
Well#	Job Type:	ADC Used:
Company Rep:	Cement Supervisor:	Elite #8:

OptiCem v6.4.10  
09-Sep-12 18:51

WPX - RGU 321-36-198  
9 5/8 SURFACE - 2 STAGE



Customer:	Job Date: 09-Sep-2012	Sales Order #: 9803809
Well#	Job Type:	ADC Used:
Company Rep:	Cement Supervisor:	Elite #8:

OptiCem v6.4.10  
09-Sep-12 18:52