



Weatherford®

**6 3/4 in. & 4 3/4 in. WeatherfordM/LWD™
Spectral Gamma Ray Image
5 in. MEASURED DEPTH
RECORDED DATA
FINAL PRINT**

Company: Anadarko
 Well: Cannon 37C-3HZ
 Field: Wattenberg
 Rig: H&P 307
 County: Weld

COMPANY Anadarko
WELL Cannon 37C-3HZ
FIELD Wattenberg
RIG H&P 307
COUNTY Weld STATE Colorado
API # 05-123-35790-0000

Location
 Latitude: 40.17378° N X = 3,239,877.08 ft Mag Decl: 8.67°
 Longitude: 104.64157° W Y = 1,307,311.69 ft Mag Dip: 66.83°
 Other Services: Directional and Temperature

Permanent Datum: Mean Sea Level
 Log Measured From: Drill Floor Elev: 4867.0 ft above perm. datum
 Depth Reference: Drillers Tally Total Depth: 11477 ft
 Depth Logged: 6500 ft to 11477 ft Runs: 3
 Date Logged: 6-Sep-12 to 11-Sep-12 Spud Date: 4-Sep-12

Borehole Record		Casing Record				
Hole Size	From	To	Size	Weight	From	To
13,500 in.	0 ft	825 ft	9.625 in.	36.0 lb/ft	Surface	825 ft
8,750 in.	825 ft	7502 ft	7.000 in.	26.0 lb/ft	Surface	7502 ft
6,125 in.	7502 ft	11477 ft				

Borehole Deviation Record		Mud Record				
Hole Size	Min. Inc.	Max. Inc.	Type	Weight	From	To
8,750 in.	0.20°	82.63°	WBM	8.40 - 9.50 ppg	825 ft	7502 ft
6,125 in.	86.05°	93.57°	WBM	9.50 - 10.00 ppg	7502 ft	11477 ft

All interpretations of log data are opinions based on inferences from electrical or other measurements. Weatherford International does not guarantee the accuracy or correctness of any interpretation or recommendation and we shall not be liable or responsible for any loss, cost, damages or expenses incurred or sustained by anyone resulting from any interpretation or recommendation made by any of our employees or agents.

RUN SUMMARY

M/LWD Run Number	1	2	3				
Bit Size	in. 8.750	8.750	6.125				
Bit Type	PDC	PDC	PDC				
Bit TFA	sq.in. 0.648	0.648	0.648				
Bit Start Depth	ft 825	6517	7502				
Bit End Depth	ft 6517	7502	6262				
Top Log Interval	ft No Logging	6500	7459				
Bottom Log Interval	ft No Logging	7502	11477				
Begin Log Time	hrs No Logging	11:08	4:37				
Begin Log Date	DD-MMM-YY No Logging	6-Sep-12	9-Sep-12				
End Log Time	hrs No Logging	8:22	14:34				
End Log Date	DD-MMM-YY No Logging	7-Sep-12	11-Sep-12				
Drill or Wipe	Drill	Drill	Drill				
Flow Rate	gal/min 507	595	300				
Max AV / CV @ MWD	ft/min 401 / 166	487 / 106	492 / 370				
Min Inc @ Depth	deg @ ft 0.20 @ 4157	0.22 @ 4061	86.05 @ 11425				
Max Inc @ Depth	deg @ ft 6.99 @ 2545	82.63 @ 7444	93.57 @ 10693				

MUD DATA							
Depth	ft 6517	7502	11477				
Fluid Type	WBM	WBM	WBM				
Mud Weight	ppg 8.60	9.50	10.00				
Plastic Viscosity	cP 2	13	14				
Solids / Sand	% 1.9 / 0.2	6.2 / 0.5	8.7 / 0.6				
NaCl Equiv. Chlorides	ppm 1320	1320	1320				
pH	8.2	8.7	9.2				
Oil:Water Ratio	% Vol 2.2 : 97.8	7.5 : 92.5	11.0 : 89.0				
Rm @ Temperature	ohm-m @ deg F N/A	N/A	2.20 @ 80				
Rmc @ Temperature	ohm-m @ deg F N/A	N/A	3.50 @ 78				
Rmf @ Temperature	ohm-m @ deg F N/A	N/A	1.99 @ 78				
KCl	% Vol 0	0	0				
Client Representative	C. Jones	C. Jones	C. Jones				
WeatherfordM/LWD Engineer	R. Komrs	R. Komrs	L. Howse				

EQUIPMENT SUMMARY

MWD/LWD Run Number	1	2	3		
PP Serial Number	CP20595YHRDP-01	CP20595YHRDP-01	N/A		
HEL Serial Number	N/A	N/A	NW21491PDSS4.75		
MFR Serial Number	N/A	N/A	NW21690RBBK4.75-M2		
IDS Serial Number	N/A	N/A	NW21691BI4.75		
SAGR Serial Number	N/A	N/A	NW21692JB4.75		
NDT Serial Number	N/A	N/A	NW21930NZBB4.75		
Density Source Serial Number	N/A	N/A	06955B		
Sensor to Bit Offsets / Acquisition Rates					
Directional	ft / sec	57.86 / RT	57.86 / RT	49.34 / RT	
Gamma Ray	ft / sec	43.65 / RT	43.65 / RT	39.23 / 5	
Resistivity	ft / sec	N/A	N/A	75.19 / 5	
Density	ft / sec	N/A	N/A	102.09 / 5	
Other Information					
Total BHA Length	ft	96.32	96.32	162.73	
BHA Assembly Type		Steerable	Steerable	Steerable	
Stabilizer Location	ft	N/A	N/A	29.26	
Stabilizer Location	ft	N/A	N/A	100.04	
Stabilizer Location	ft	N/A	N/A	162.73	
Run Circulating Time	hr	25.85	23.75	62.86	
Run Drilling Time	hr	16.39	12.90	26.04	

MUD SUMMARY

Date and Time	Run	Bit Depth	Mud Weight	% K	Rm @ Temp	Rmf @ Temp	Rmc @ Temp	BHCT
5 Sept 12 @ 23:59	01	6517 ft	8.60 ppg	0	N/A	N/A	N/A	94 F
7 Sept 12 @ 08:22	02	7502 ft	9.50 ppg	0	N/A	N/A	N/A	150 F
11 Sept 12 @ 14:34	03	11477 ft	10.00 ppg	0	2.20 @ 80	1.99 @ 78	3.50 @ 78	231 F

M/LWD RUN REMARKS

Run Number: 1 :: REAL TIME LOG

WFT Services Provided:

Real Time Logging: Temperature.

Directional Services: On demand Inclination and Azimuth.

Run Number: 2 :: REAL TIME LOG

WFT Services Provided:

Real Time Logging: Gamma Ray and Temperature.

Directional Services: On demand Inclination and Azimuth.

Borehole and Environmental Correction:

Collar O.D.: 6.75 in.

Gamma Ray: Collar O.D., collar I.D. and K1 factor.

Collar I.D.: 3.25

K1 Factor: 3.012

Run Number: 3 :: RECORDED DATA LOG

WFT Services Provided:

Recorded and Real Time Logging: Gamma Ray, Deep, Medium and Shallow Resistivity, Bulk Density and Temperature.

Directional Services: On demand Inclination and Azimuth.

Borehole and Environmental Correction:

Hole Size: 6.125 in.

Gamma Ray: Corrected for mud weight, hole size and KCl concentration.

Mud Weight: 10.00 ppg

Resistivities: Corrected for borehole temperature, hole size, drilling fluid resistivity and dielectric correction.

Borehole Temperature: 231° F

Drilling Fluid Resistivity: 2.20 ohm-m

Bulk Density: No corrections.

KCl Concentration: 0%

M/LWD LOG COMMENTS

Comment No. 1-1

REAL TIME DATA LOG

Start of MWD Drilling Run 01

Weatherford International provided 6 3/4 in. Directional and Temperature for Run 01.

Run 01 started formation drilling September 4, 2012 at 17:10 at 825 MD / 825 TVD. Weatherford International logged the 8.750 in. borehole.

The WBM at the start of logging was 8.40 ppg.

Comment No. 1-2

End of MWD Drilling Run 01

Run 02 ended drilling formation September 5, 2012 at 23:59 at 6517 MD / 6504 TVD.

The WBM at the end of drilling was 8.60 ppg.

Comment No. 2-1

REAL TIME DATA LOG

Start of LWD Drilling Run 02

Weatherford International provided 6 3/4 in. Directional, Gamma Ray, and Temperature for Run 02.

Run 02 started formation drilling September 6, 2012 at 11:08 at 6517 MD / 6504 TVD. Weatherford International logged the 8.750 in. borehole.

The WBM at the start of drilling was 9.50 ppg.

Comment No. 2-2

End of LWD Drilling Run 02

Run 02 ended drilling formation September 7, 2012 at 08:22 at 7502 MD / 7156 TVD.

The WBM at the end of drilling was 9.50 ppg.

Comment No. 3-1

RECORDED DATA LOG

Start of LWD Drilling Run 03

Weatherford International provided 4 3/4 in. Directional, Resistivity, Spectral Gamma Ray, Bulk Density and Temperature for Run 03.

Run 03 started formation drilling September 09, 2012 at 4:37 at 7502 MD / 7156 TVD. Weatherford International logged the 6.125 in. borehole.

The WBM at the start of drilling was 10.70 ppg.

Comment No. 3-2

End of LWD Drilling Run 03

Run 03 ended drilling formation September 11, 2012 at 14:34 at 11477 MD / 7124 TVD.

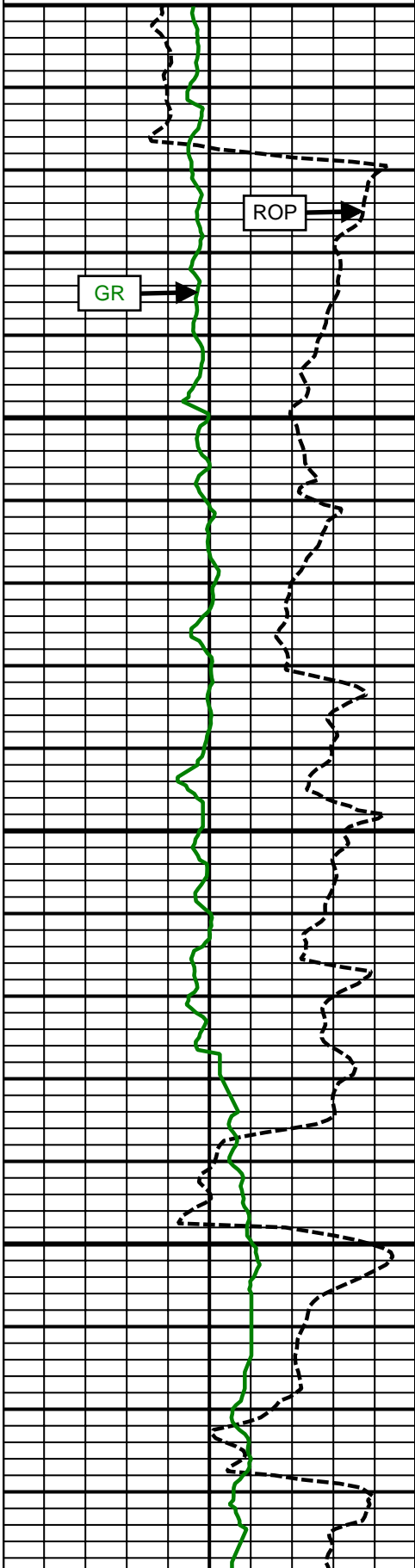
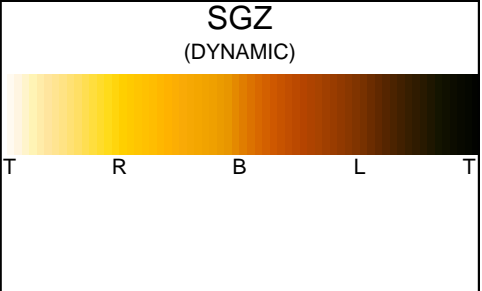
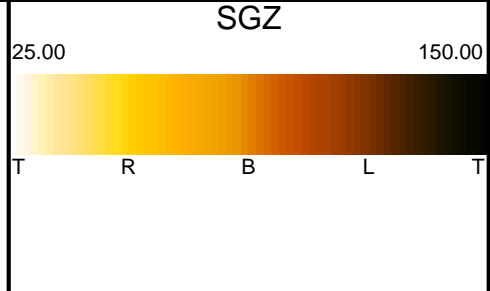
The WBM at the end of drilling was 10.00 ppg.

CURVE SPECIFICATIONS

CURVE TYPE	MNEMONIC	UNITS	COMMENTS	CORRECTIONS
Rate of Penetration	ROP	fph	Rate of Penetration 3.0 ft window 0.5 ft Exponential Smoothing	None
Gamma Ray	GR	AAPI	Gamma Ray 3.0 ft window 0.5 ft Exponential Smoothing	See M/LWD Run Remarks
Gamma Ray Up	GR Up	AAPI	Gamma Ray Up 3.0 ft window 0.5 ft Exponential Smoothing	
Gamma Ray Down	GR Down	AAPI	Gamma Ray Down 3.0 ft window 0.5 ft Exponential Smoothing	
Gamma Ray Static Image	STATIC	AAPI	Gamma Ray Static Image 3.0 ft window 0.5 ft Exponential Smoothing	
Gamma Ray Dynamic Image	DYNAMIC	AAPI	Gamma Ray Dynamic Image 3.0 ft window 0.5 ft Exponential Smoothing	

5 Inch - Measured Depth (Image Log)

500	ROP (fph)	0
GR		
0	(AAPI)	200
GR UP		
0	(AAPI)	200
GR DOWN		
0	(AAPI)	200



6500 MD

Comment 1-1

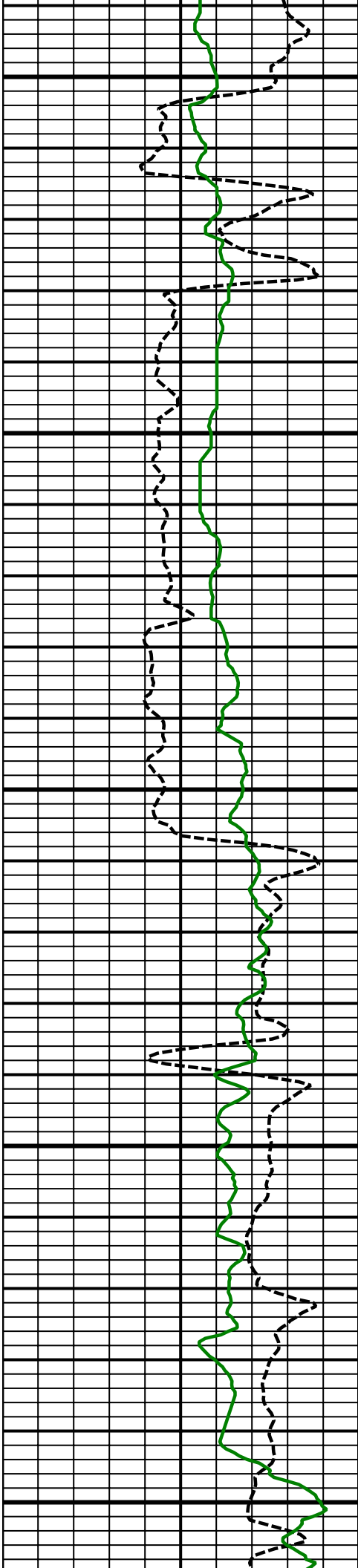
Comment 1-2

Comment 2-1

6600 MD

GR

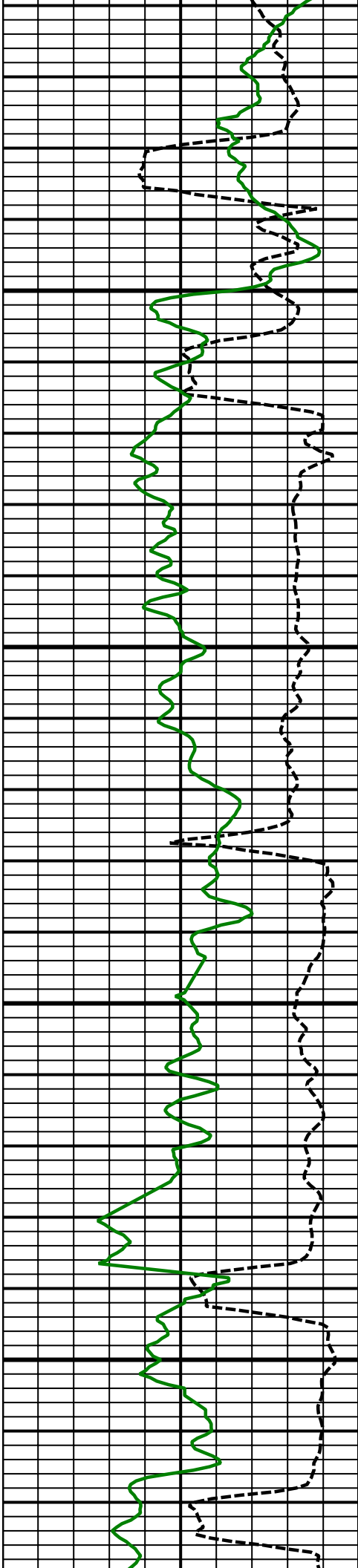
ROP



6700
MD

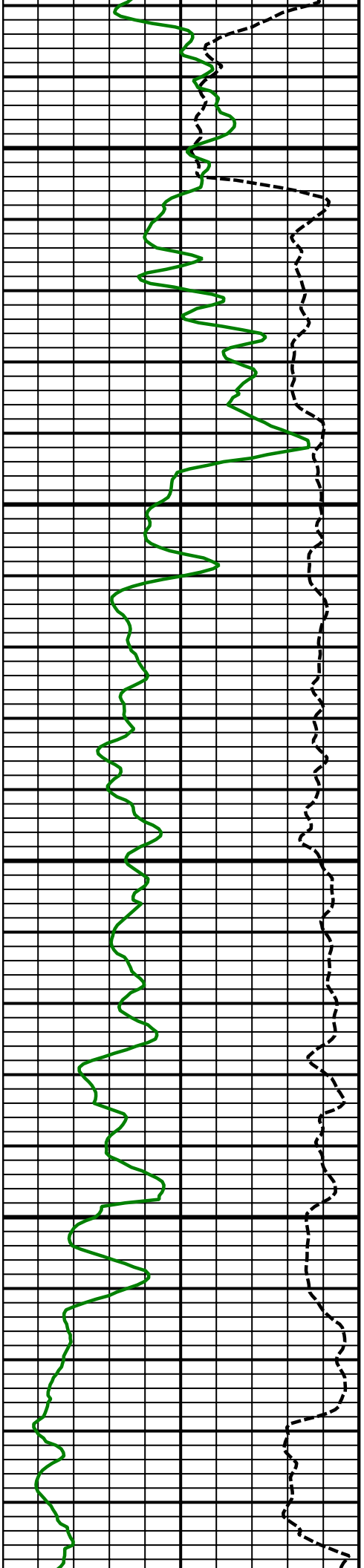
6800
MD

6900
MD



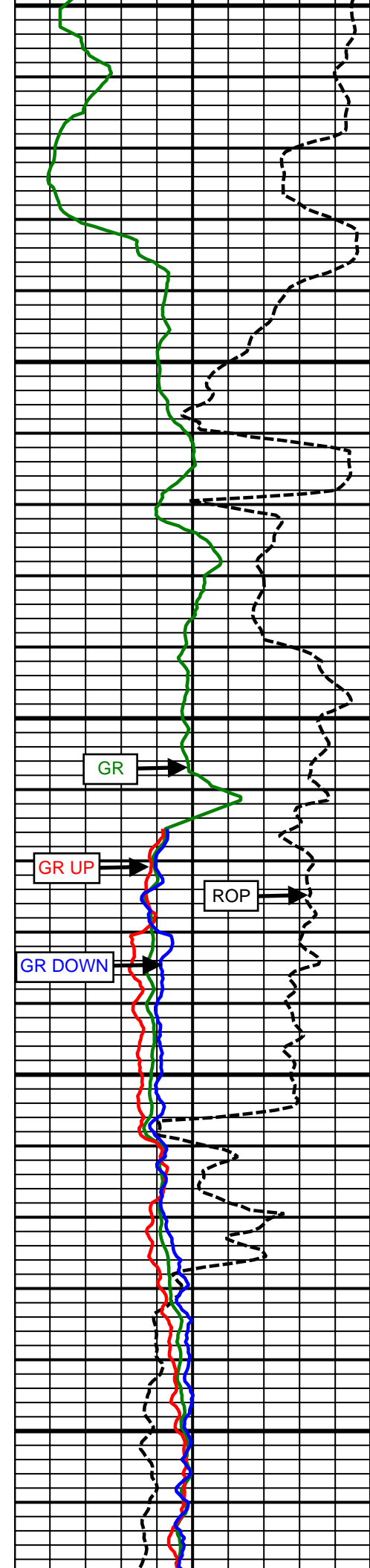
7000
MD

7100
MD



7200
MD

7300
MD

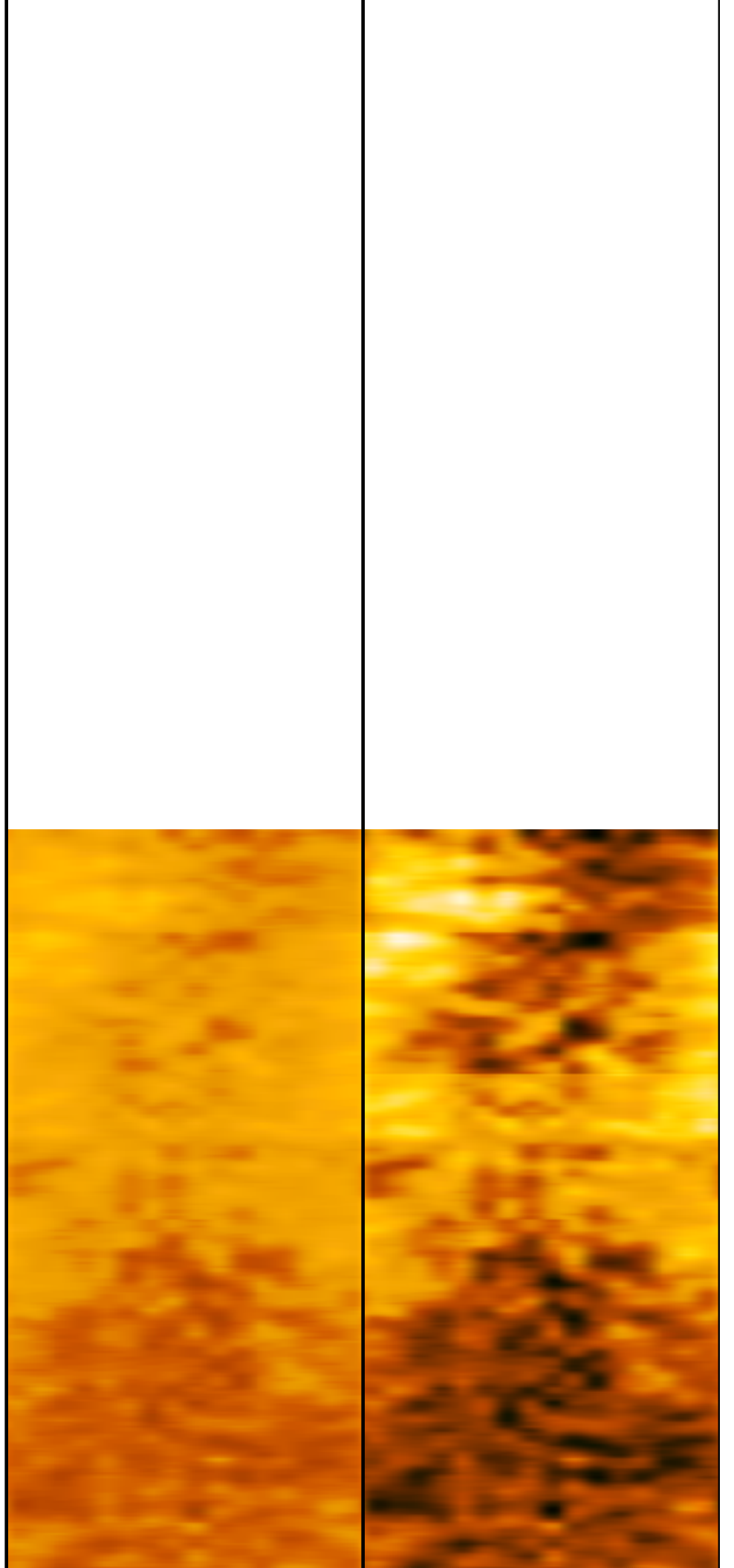


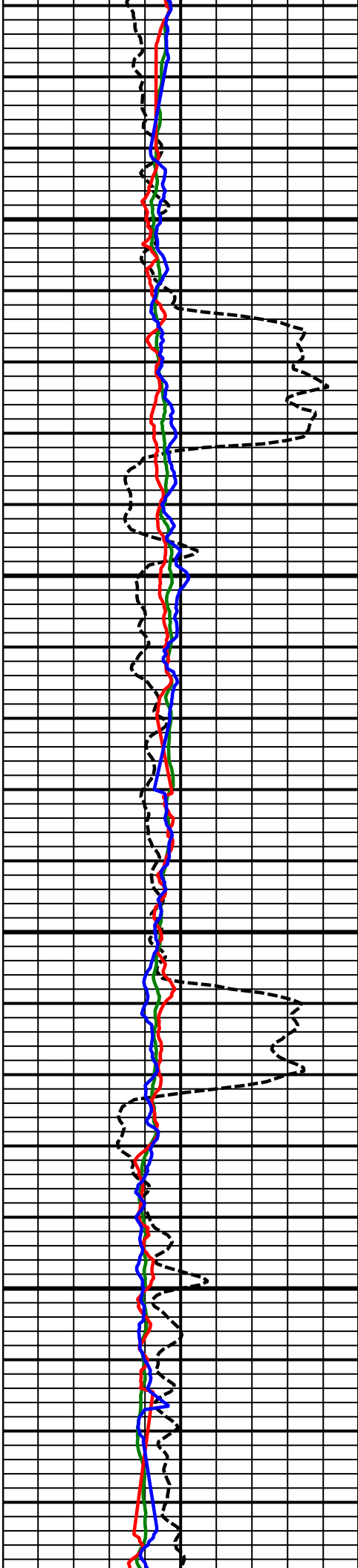
7400
MD

7500
MD

Comment
2-2

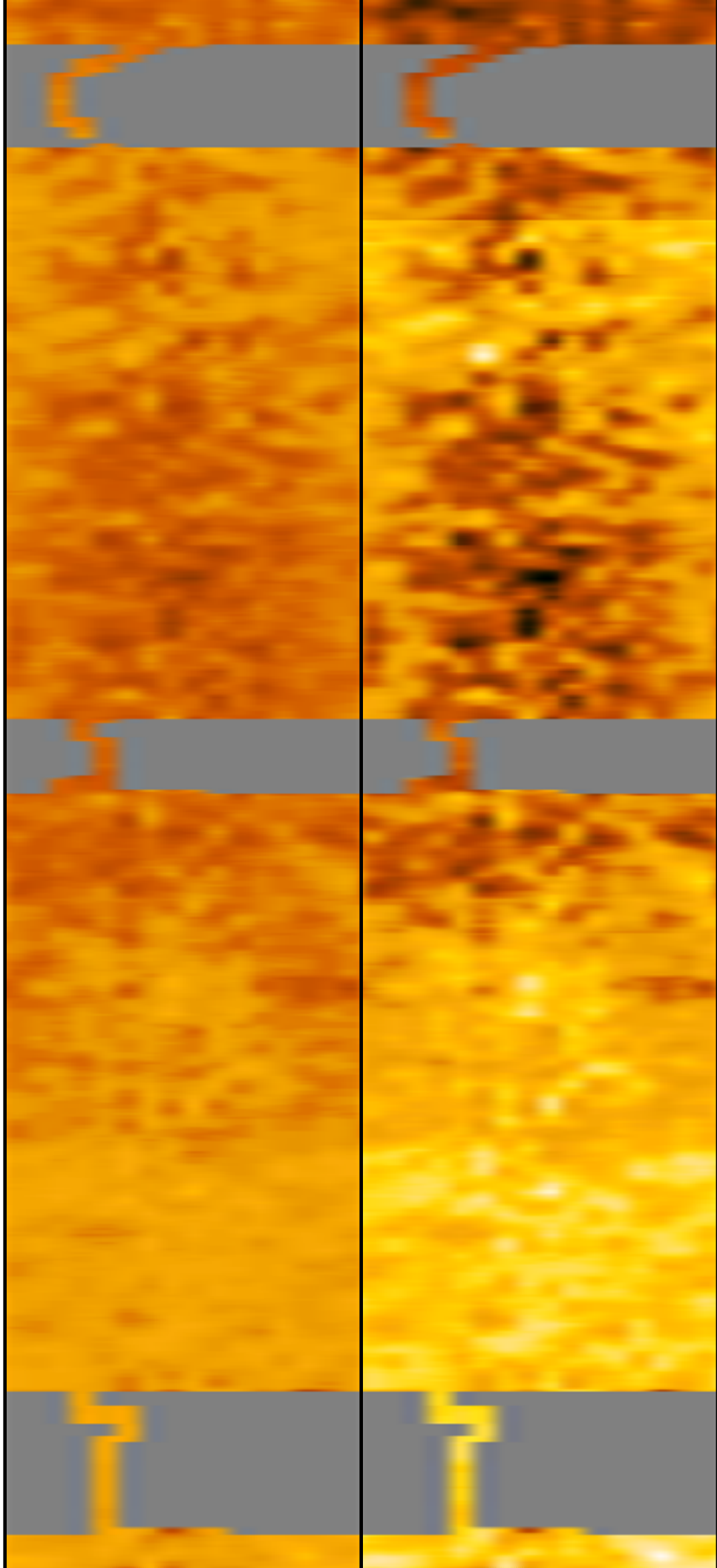
Comment
3-1

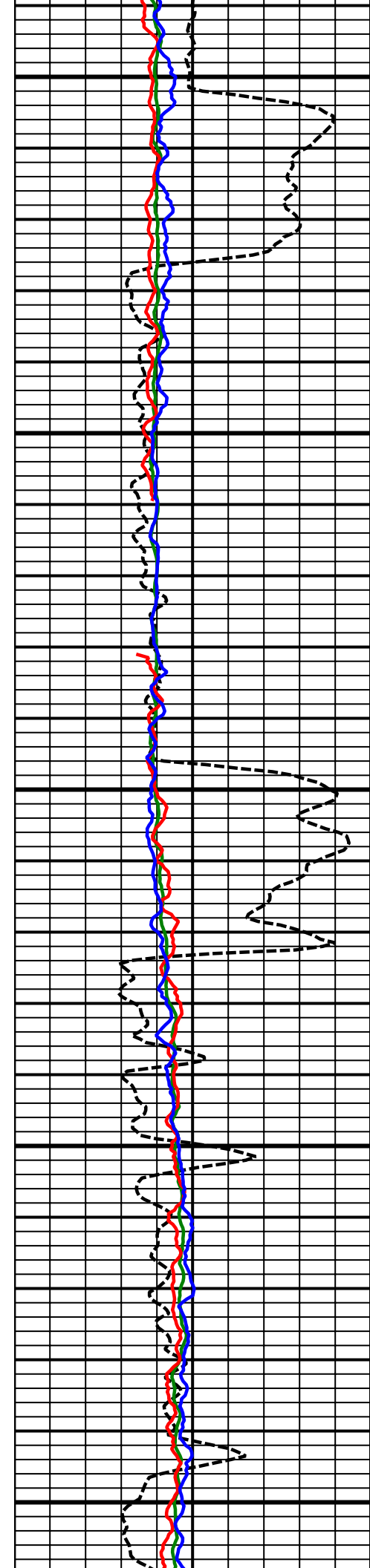




7600
MD

7700
MD

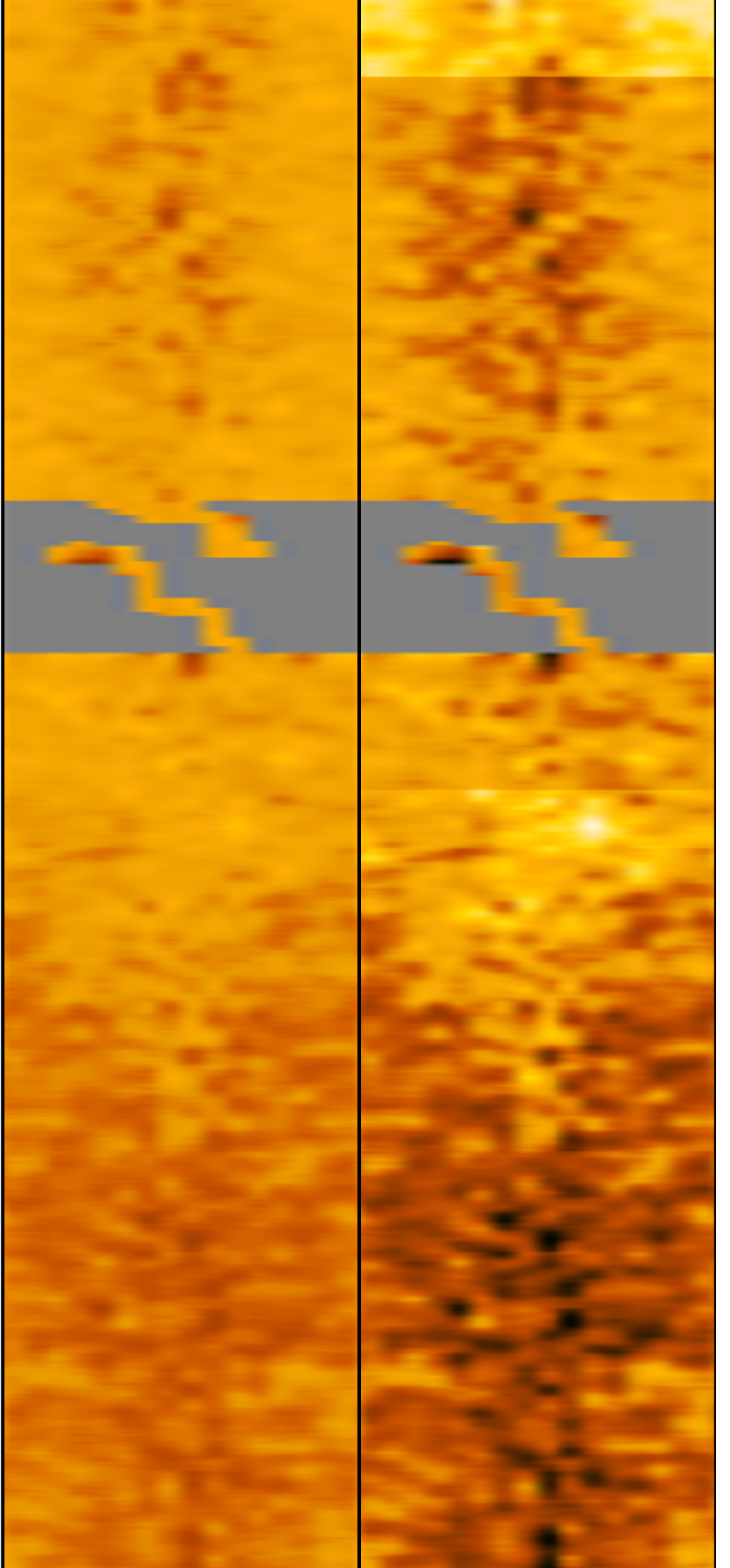


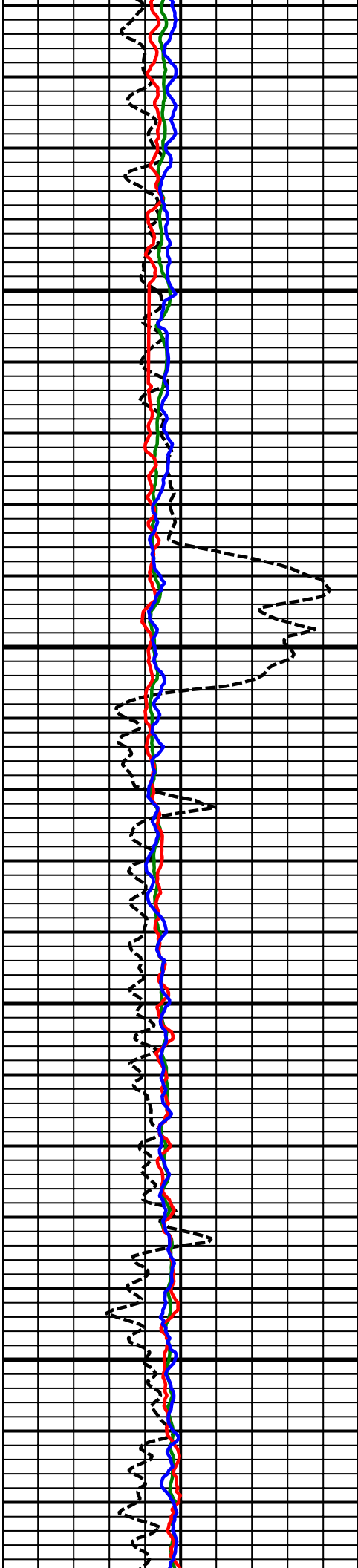


7800
MD

7900
MD

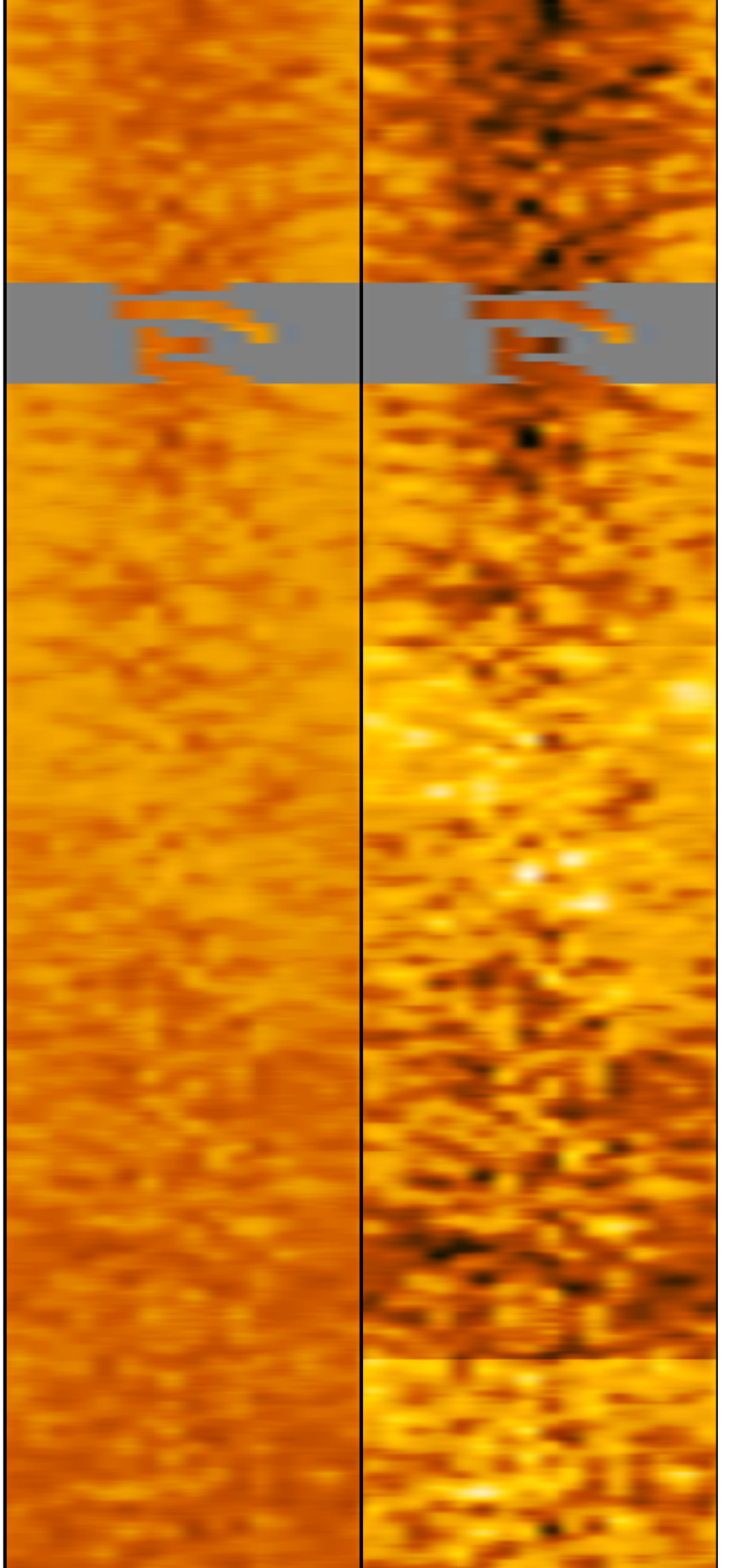
8000
MD

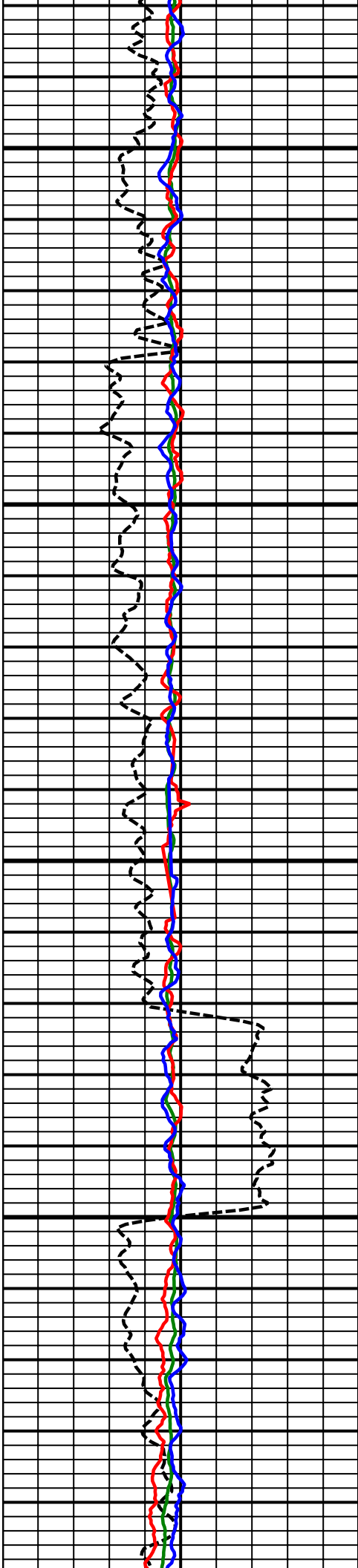




8100
MD

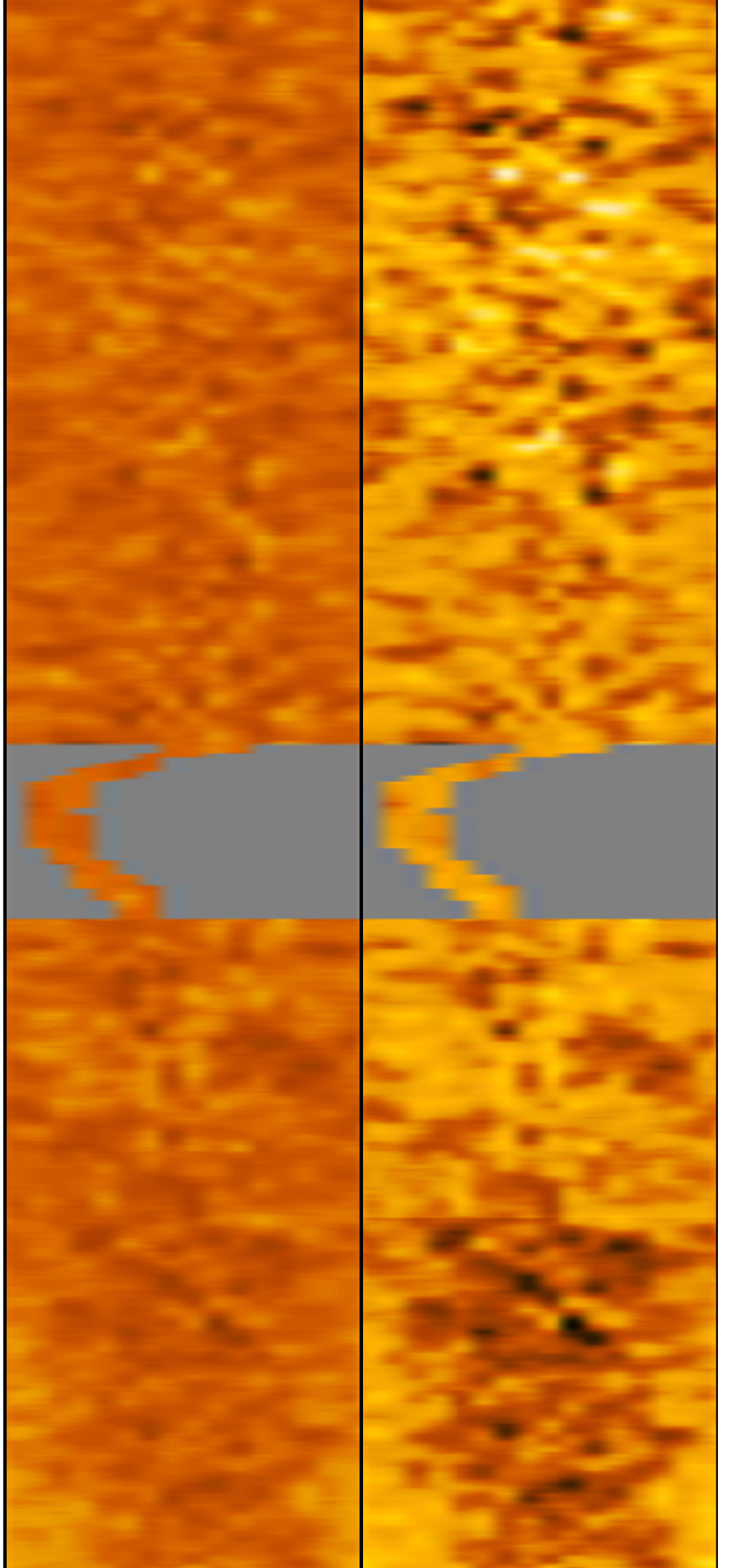
8200
MD

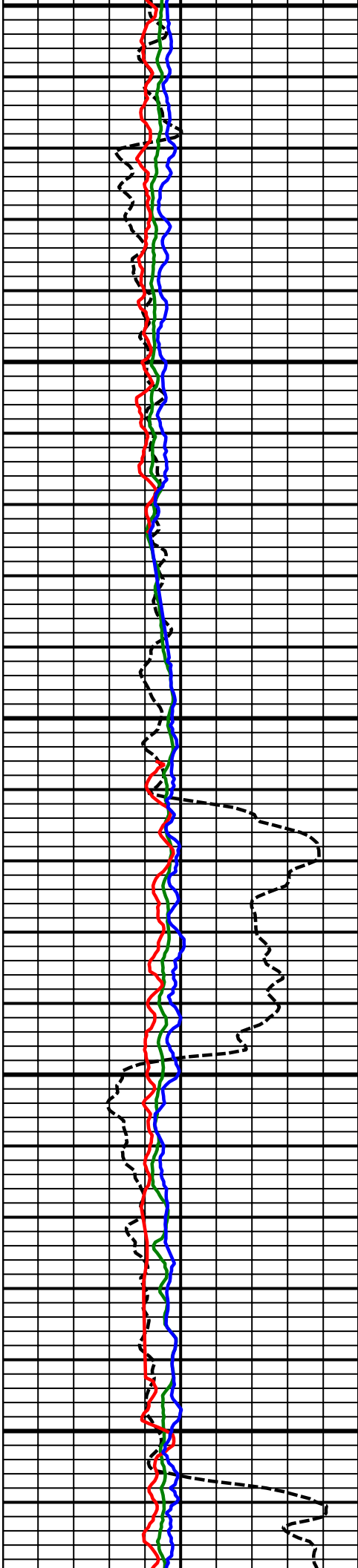




8300
MD

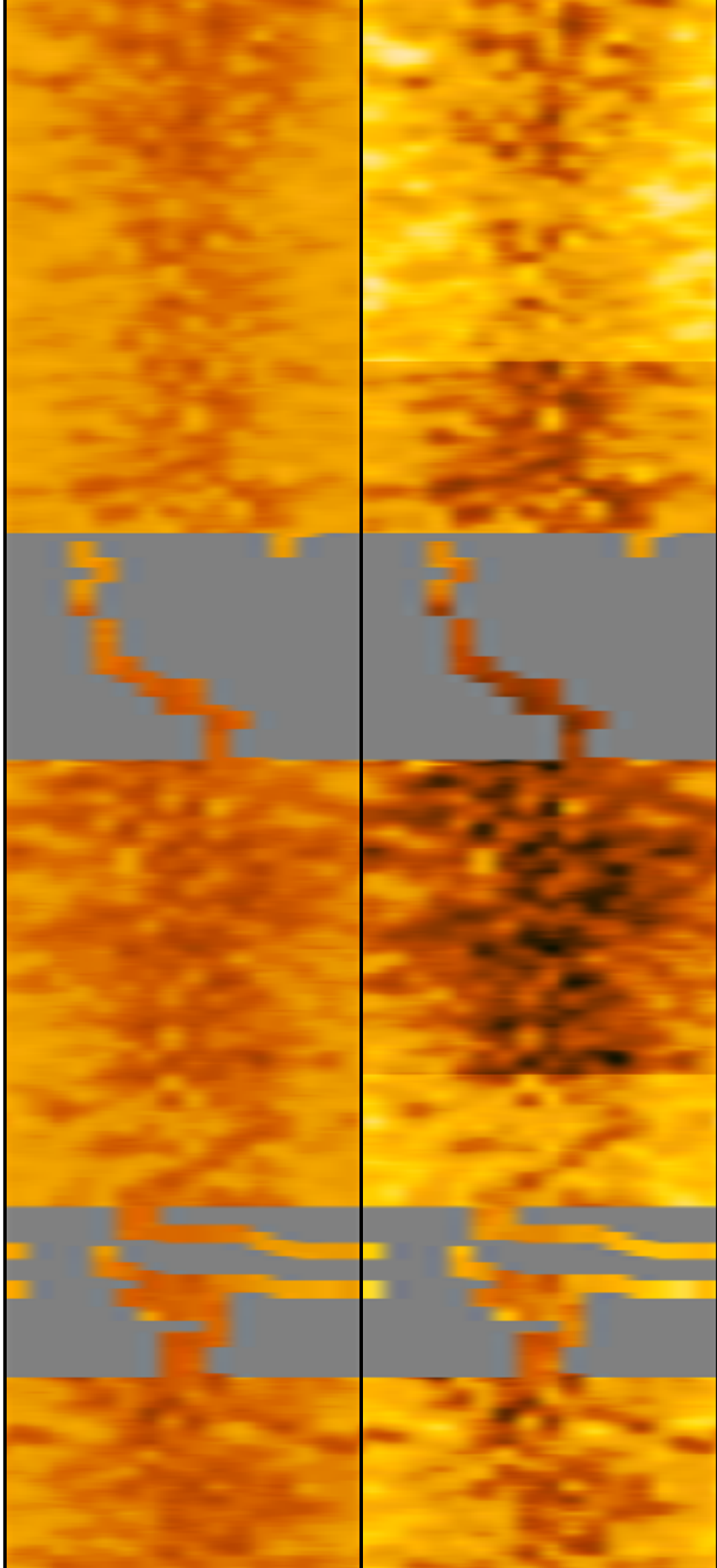
8400
MD

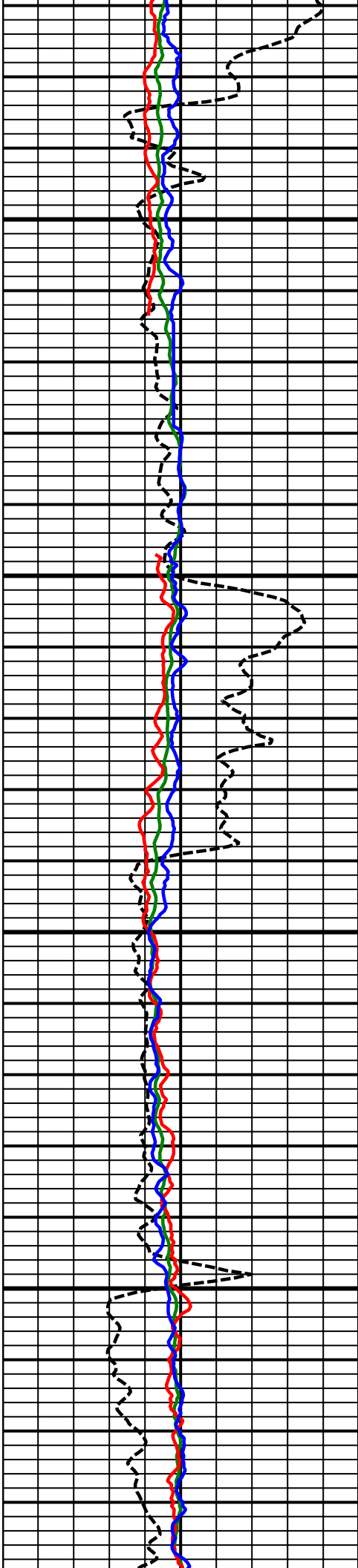




8500
MD

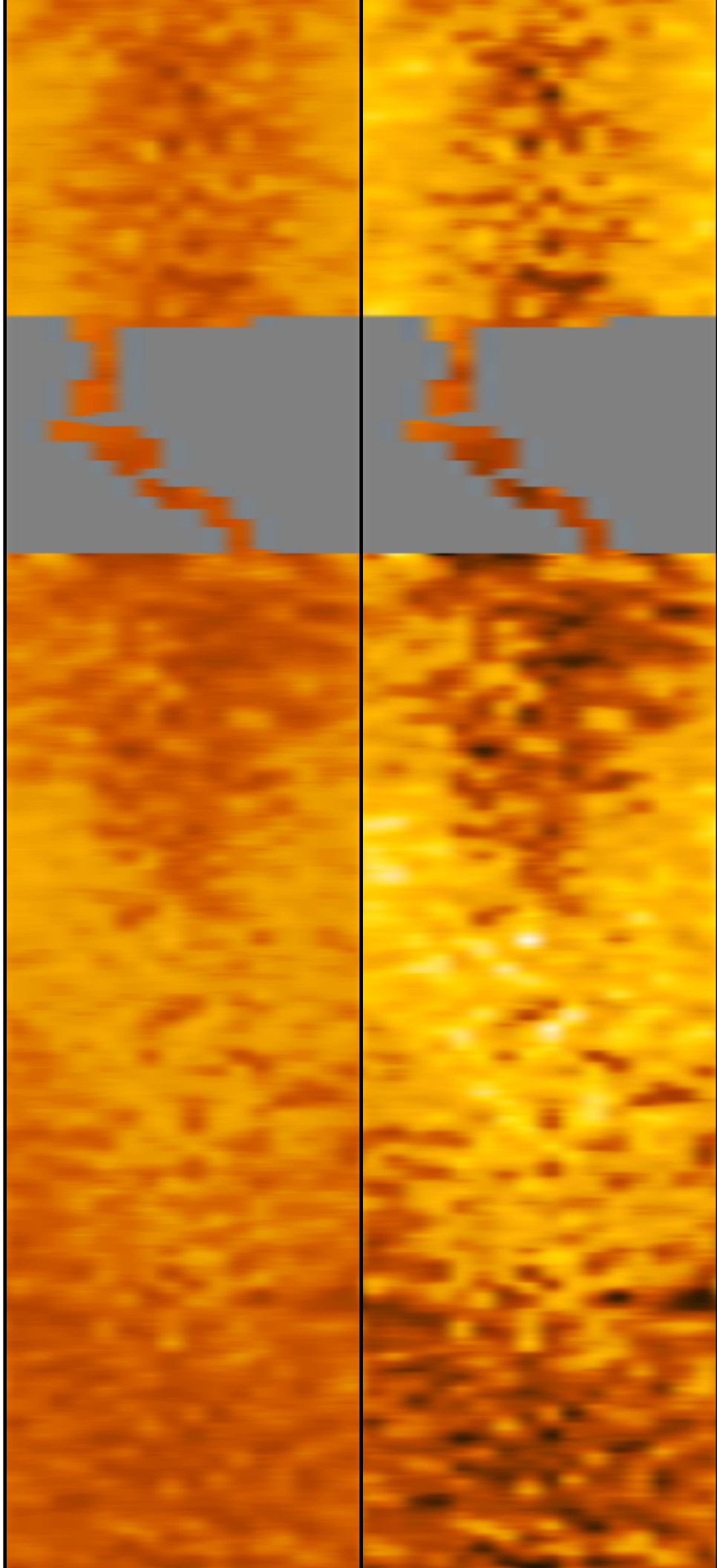
8600
MD

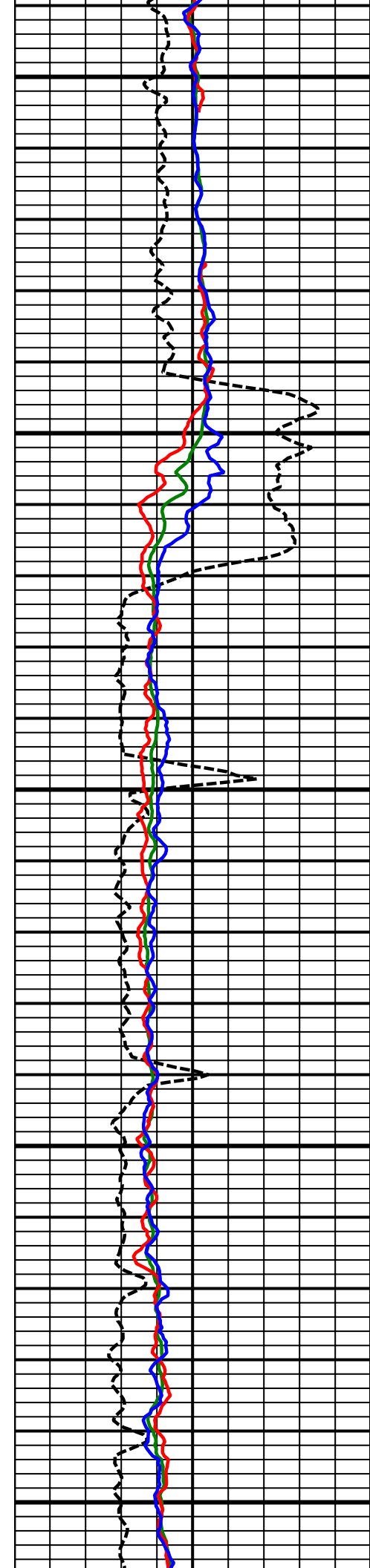




8700
MD

8800
MD

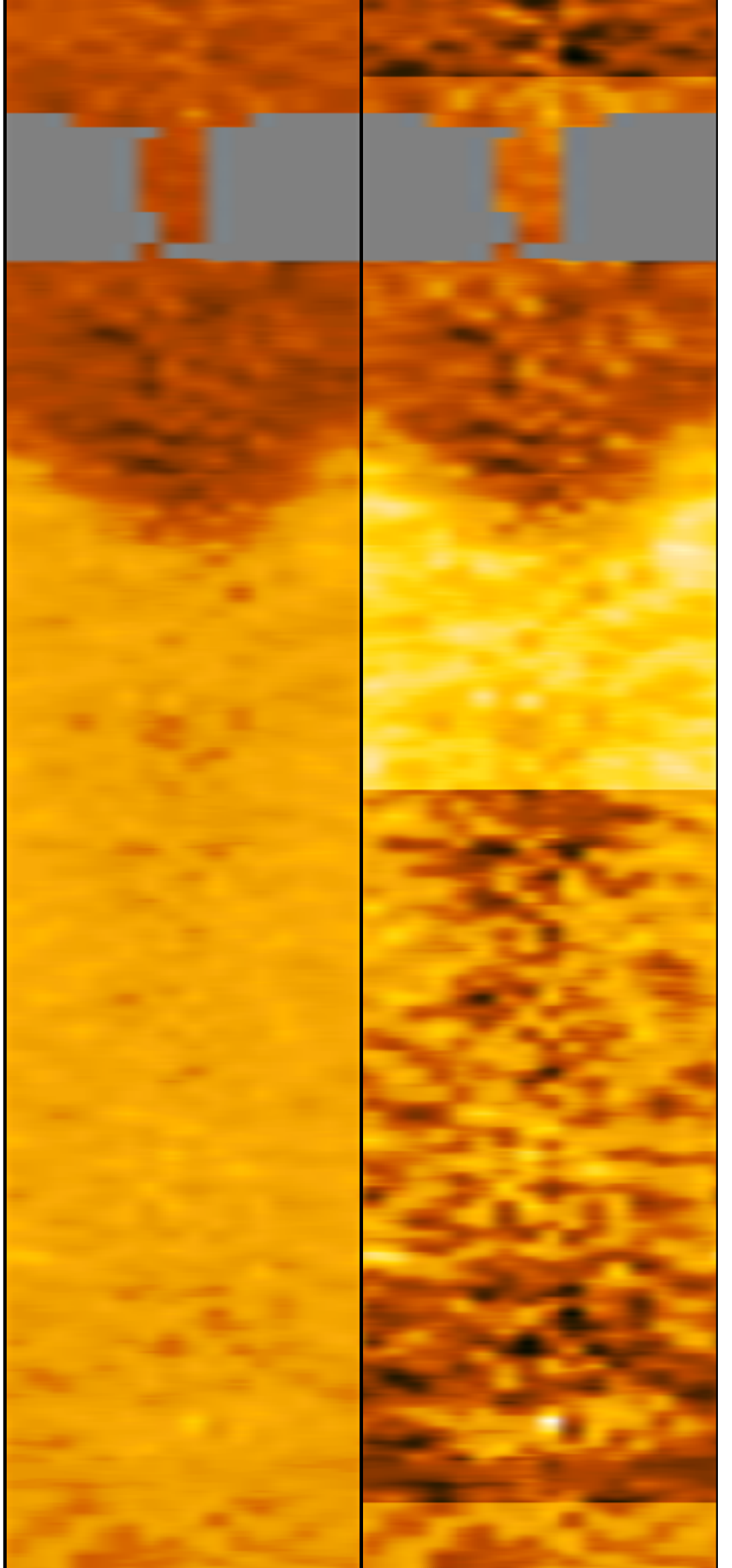


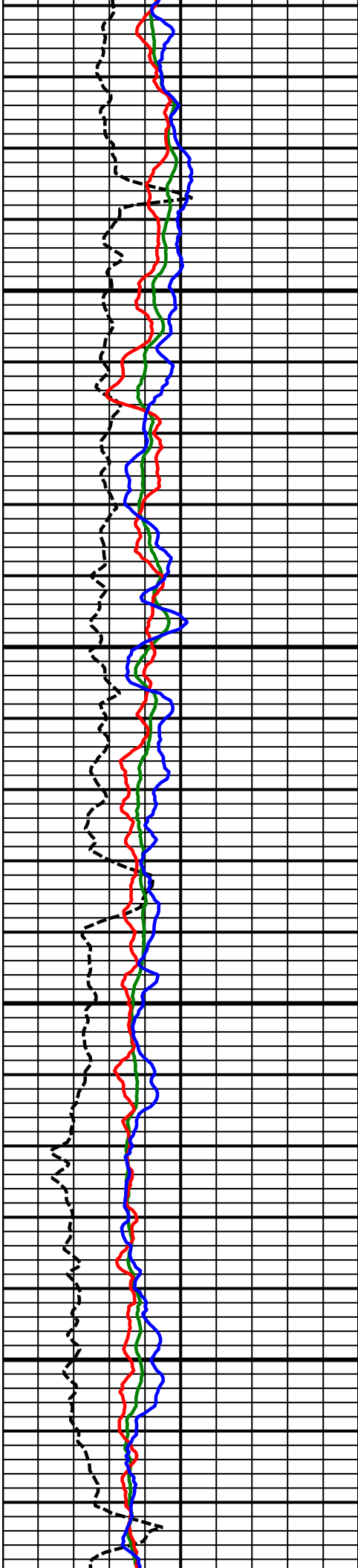


8900
MD

9000
MD

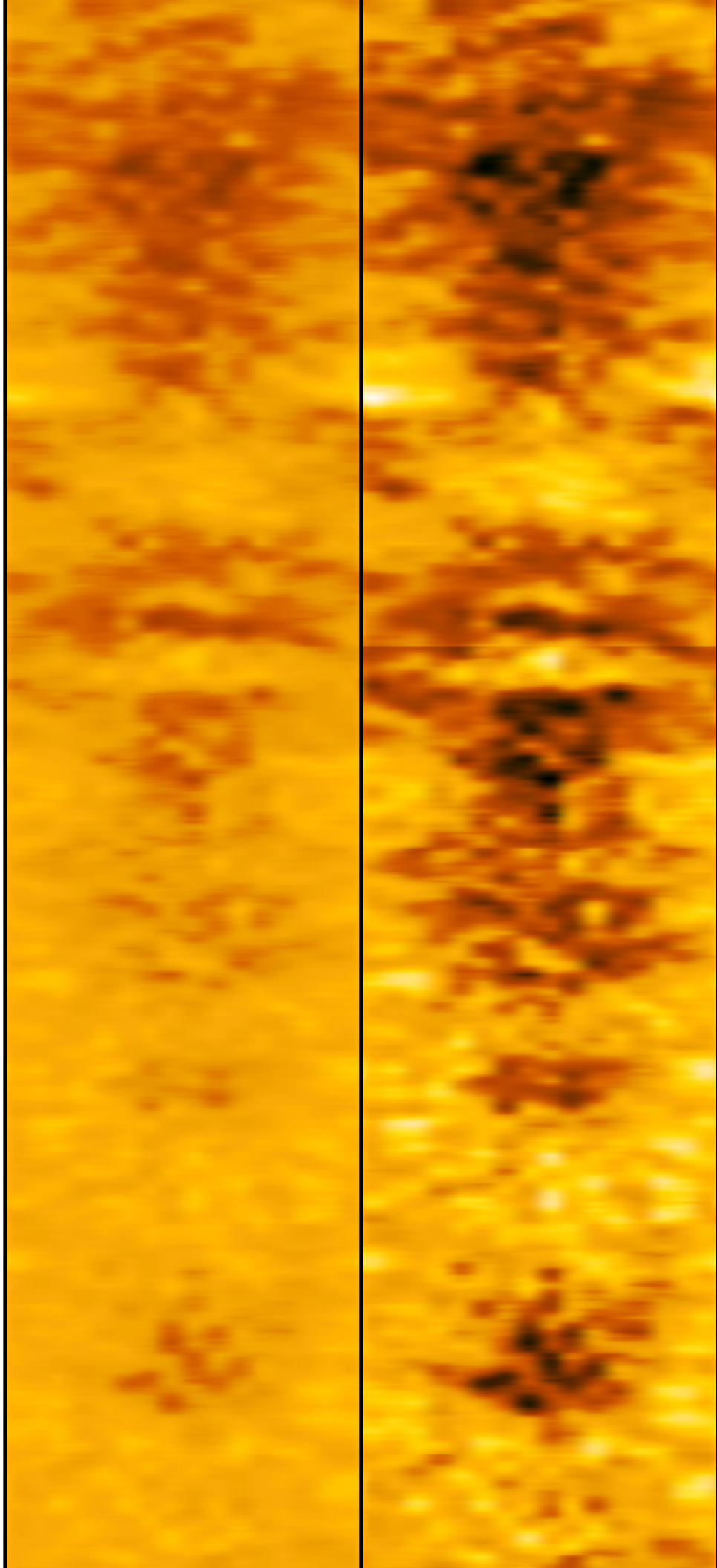
9100
MD

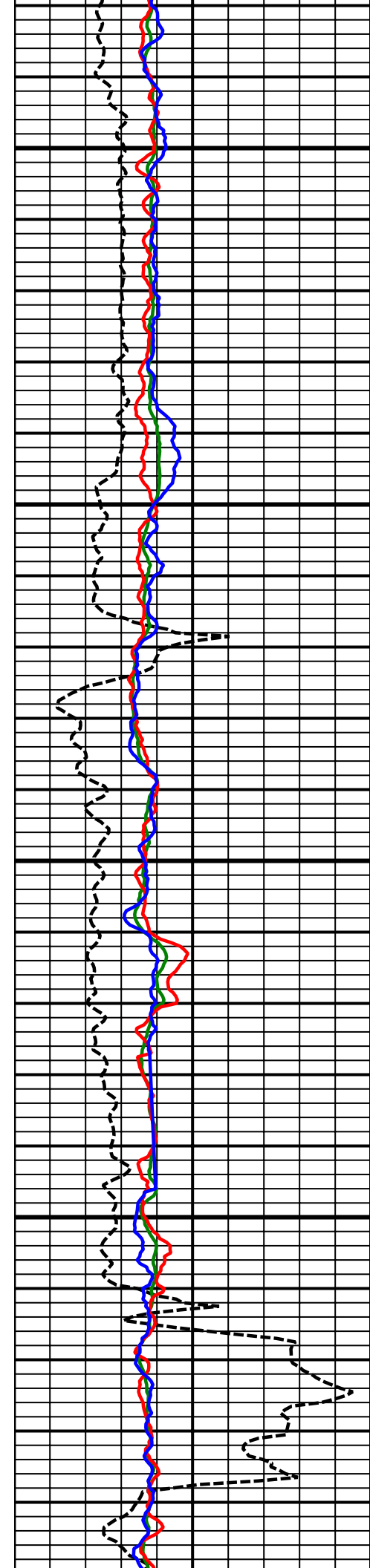




9200
MD

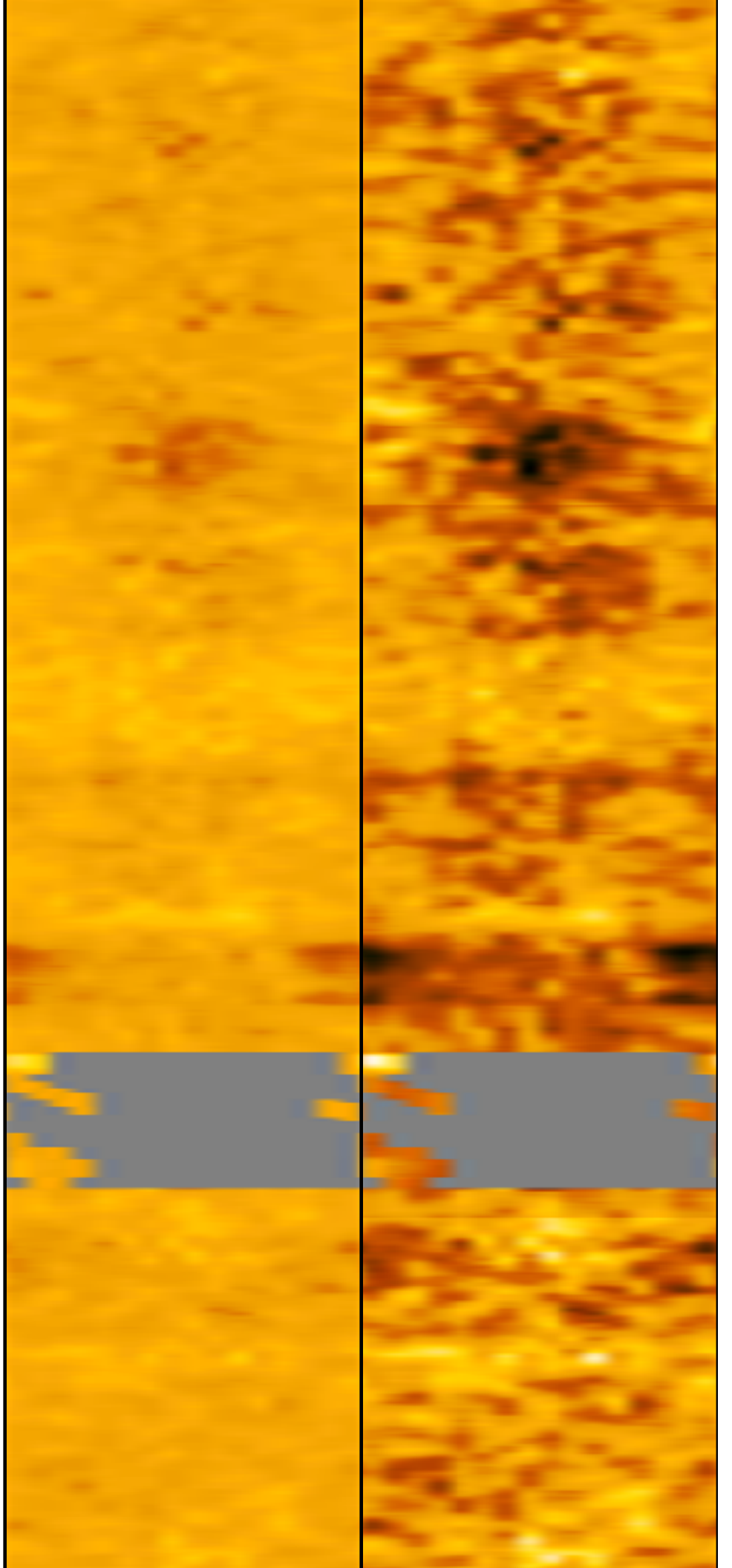
9300
MD

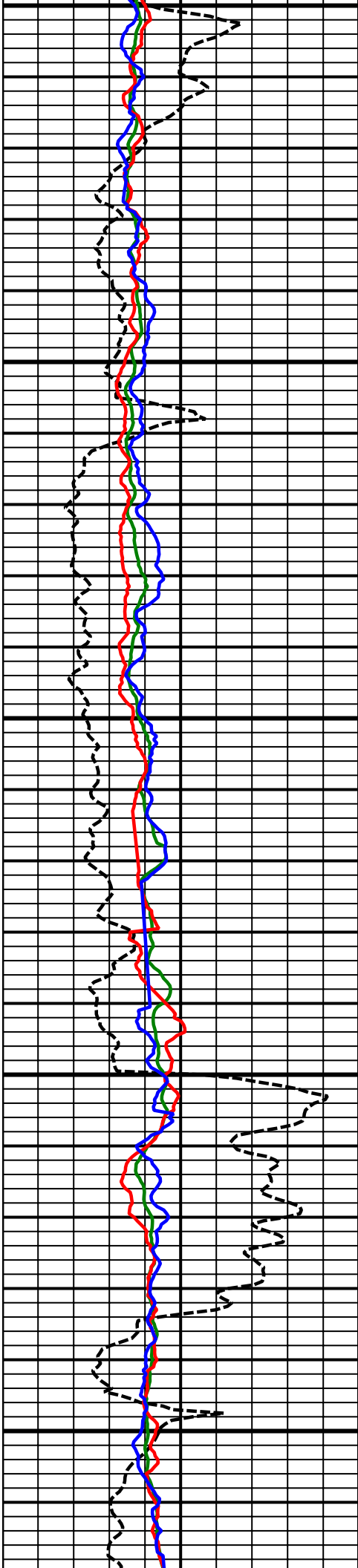




9400
MD

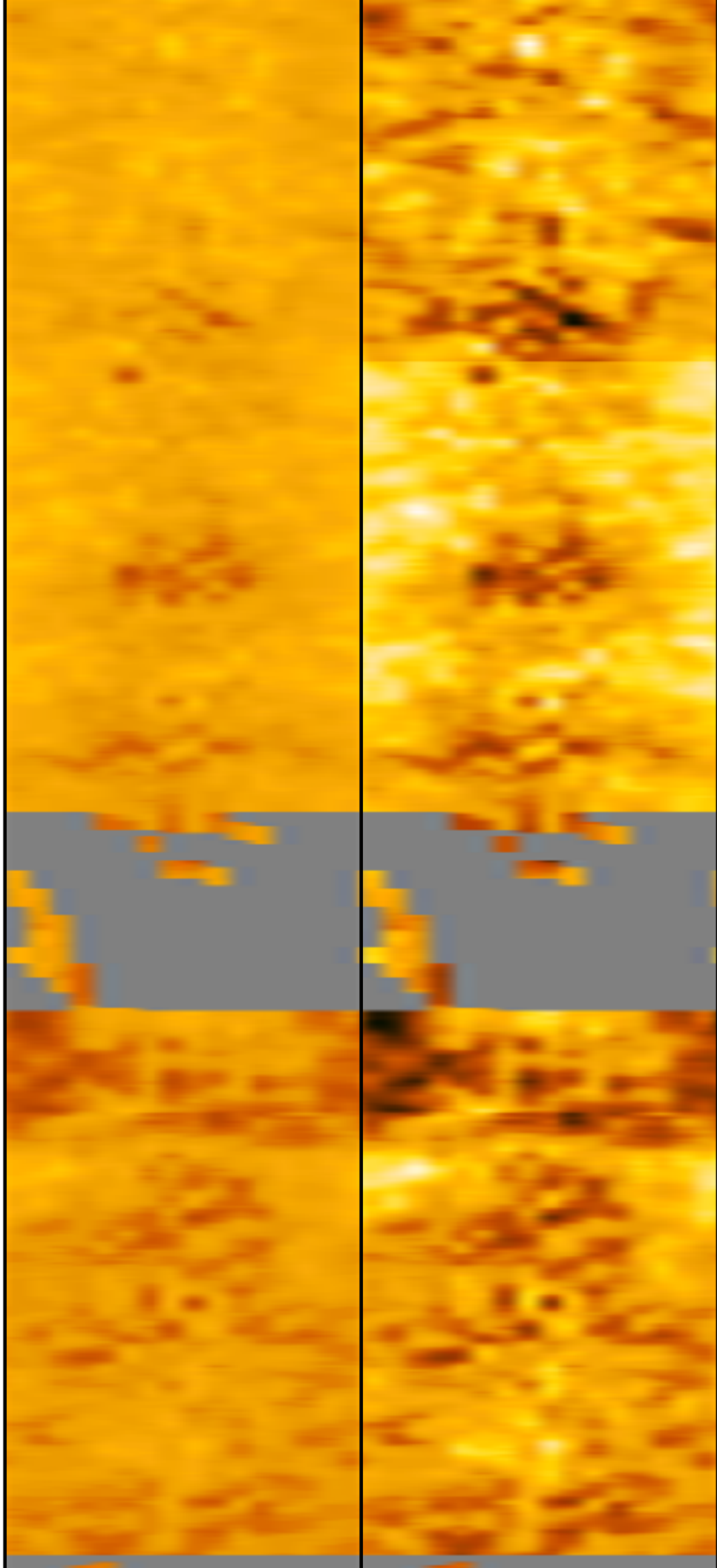
9500
MD

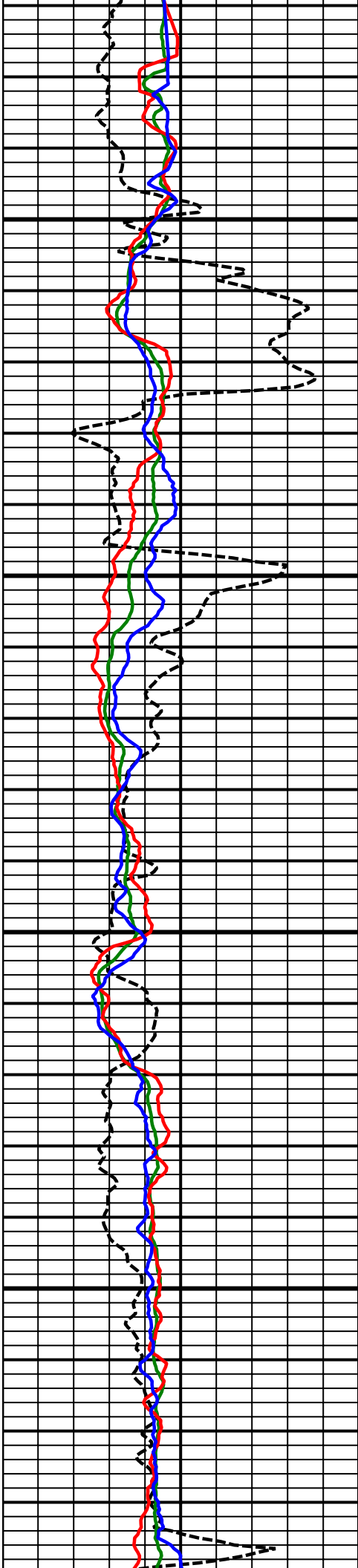




9600
MD

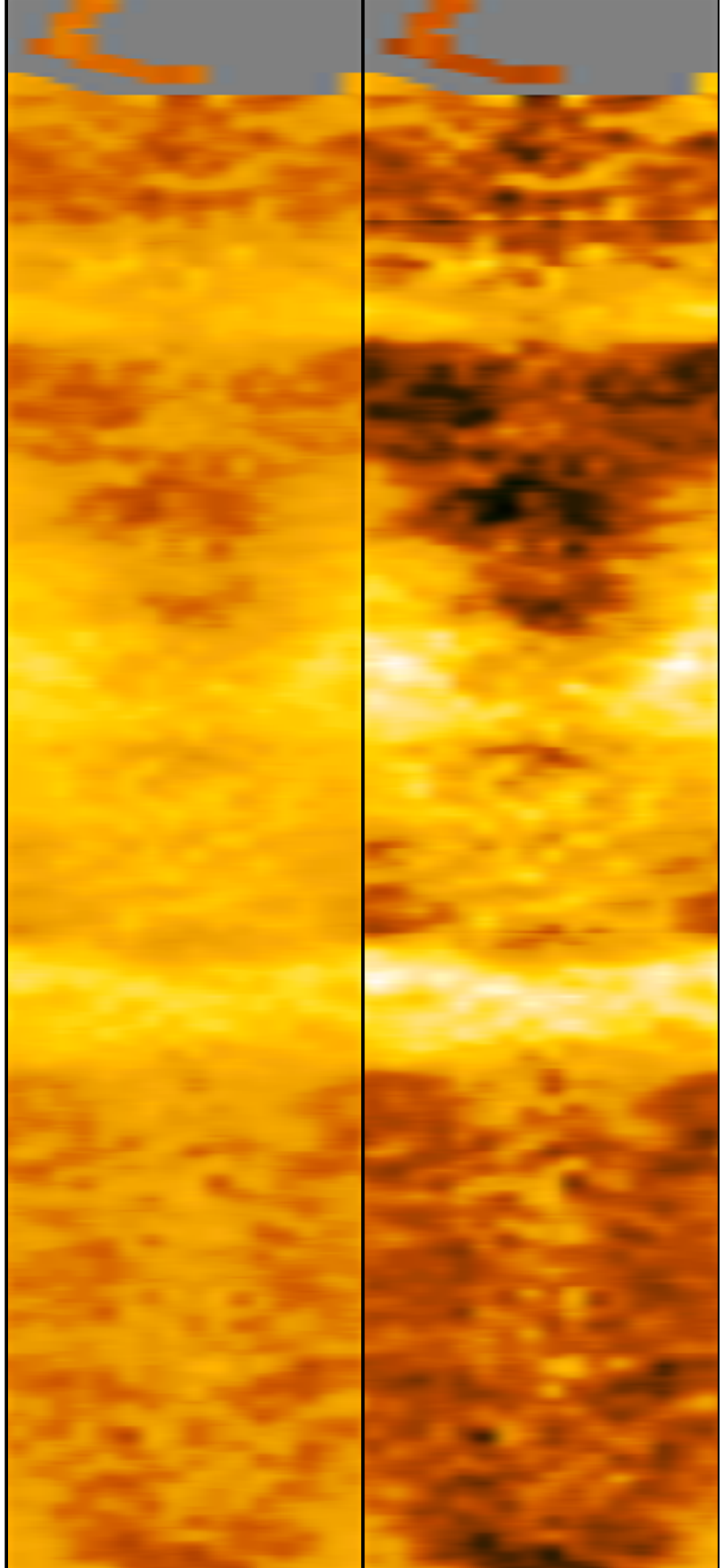
9700
MD

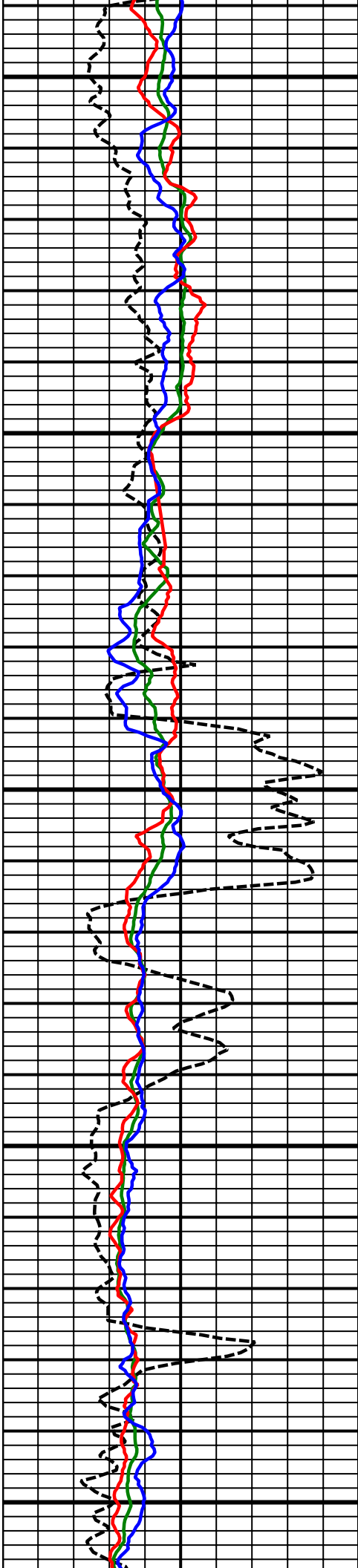




9800
MD

9900
MD

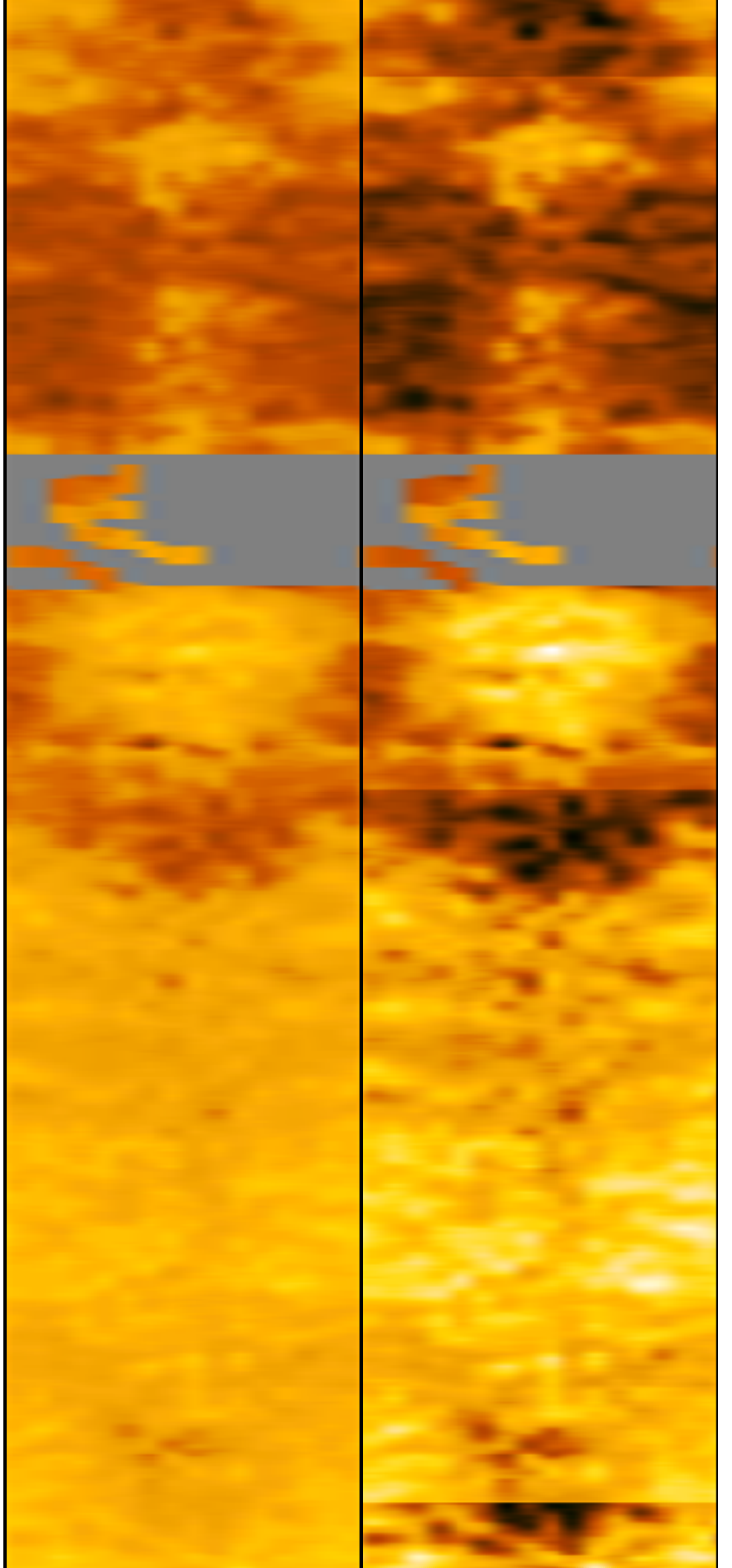


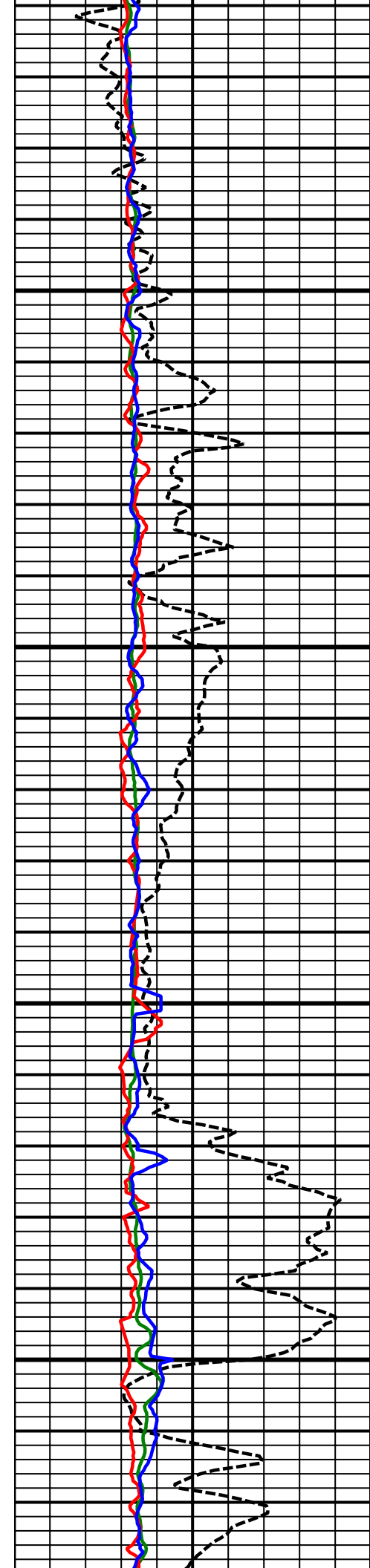


10000
MD

10100
MD

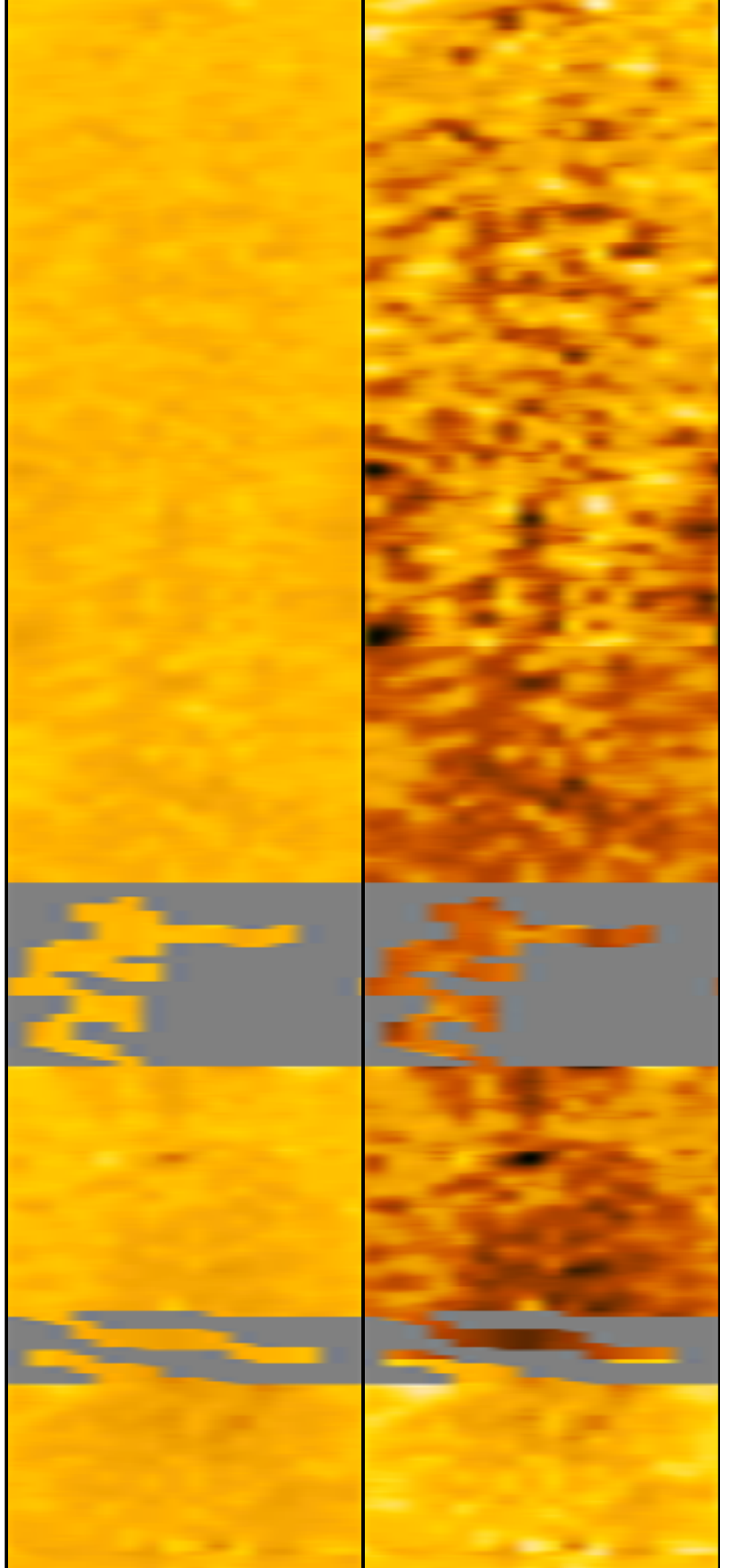
10200
MD

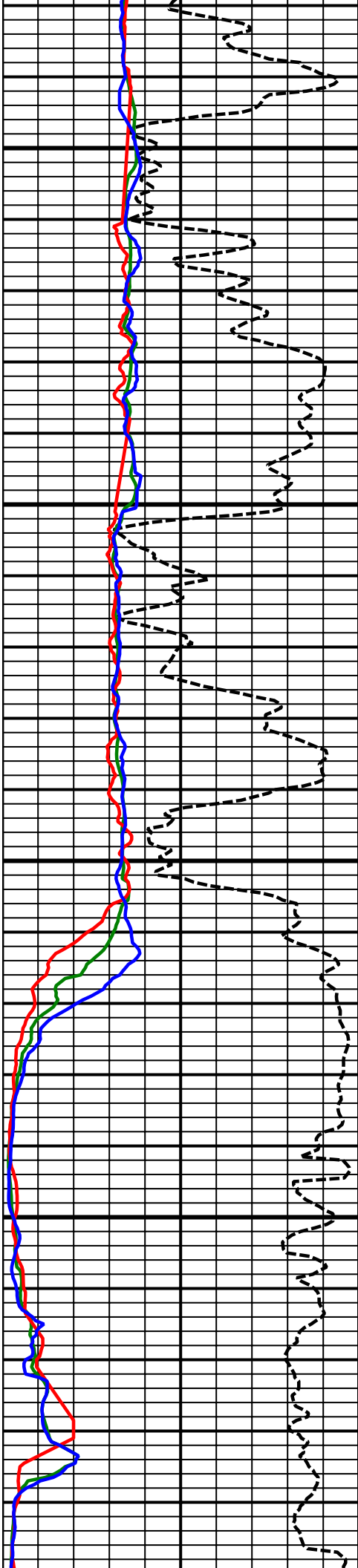




10300
MD

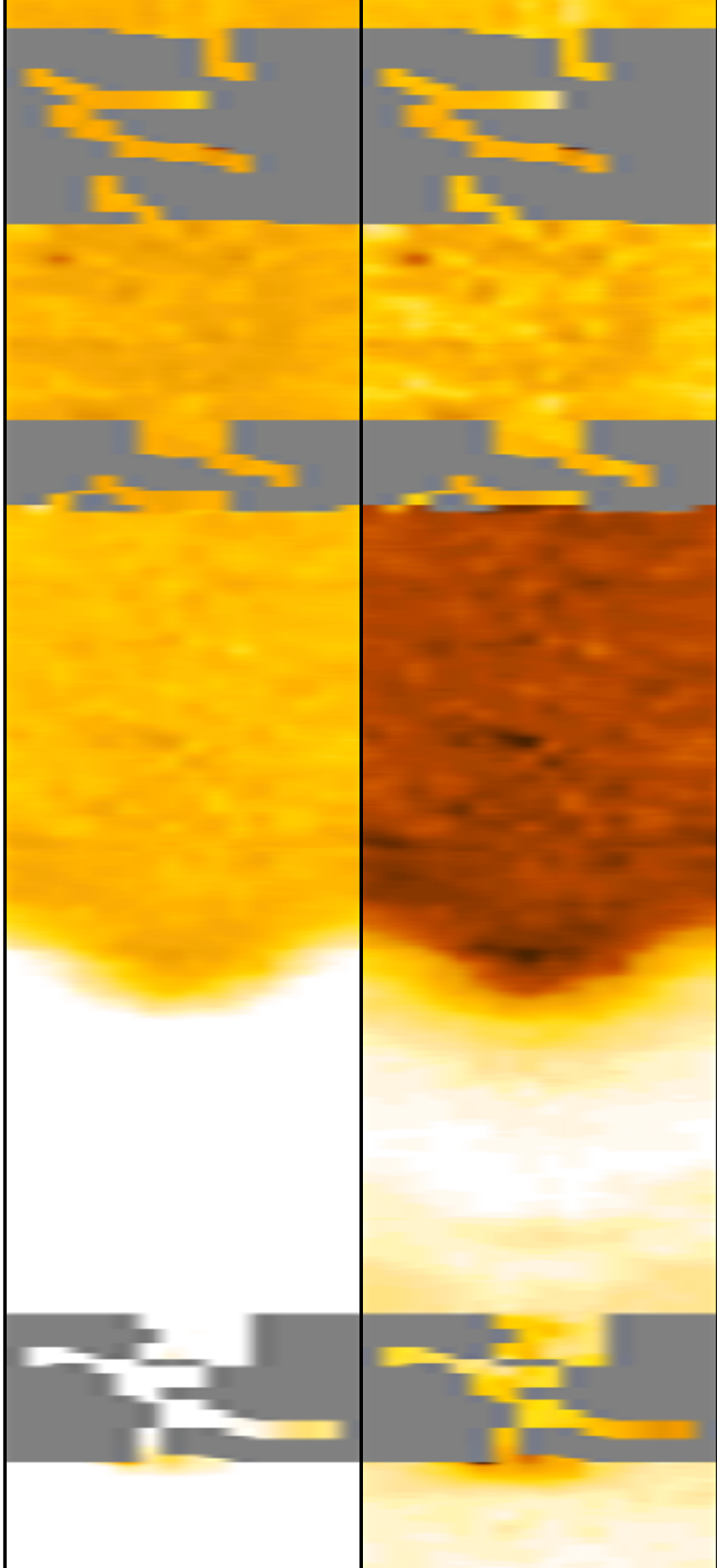
10400
MD

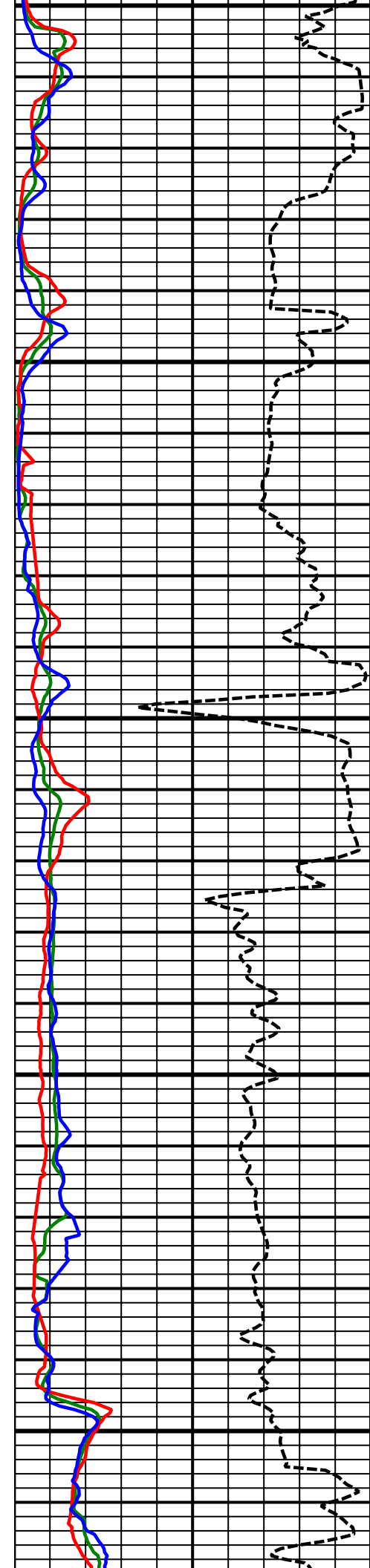




10500
MD

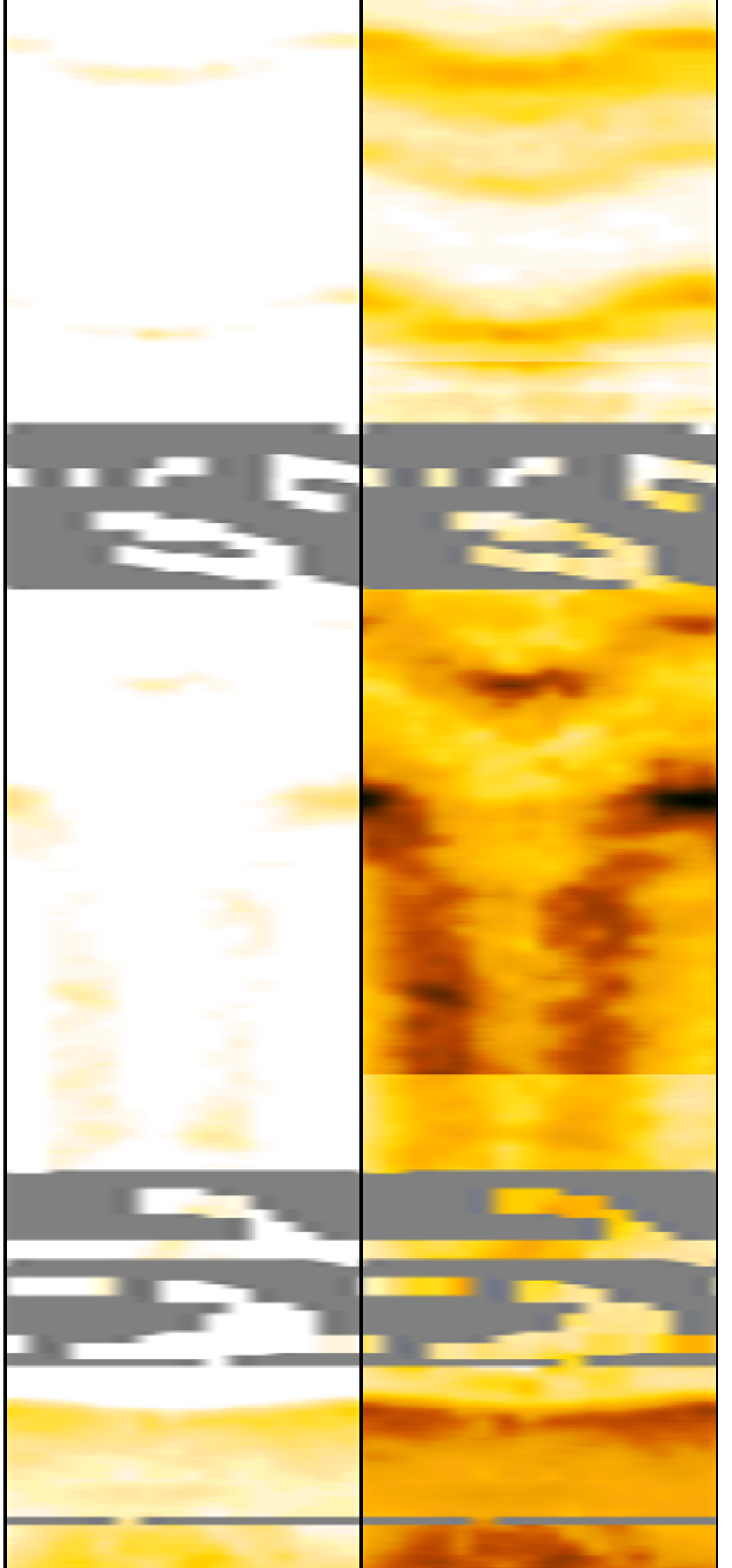
10600
MD

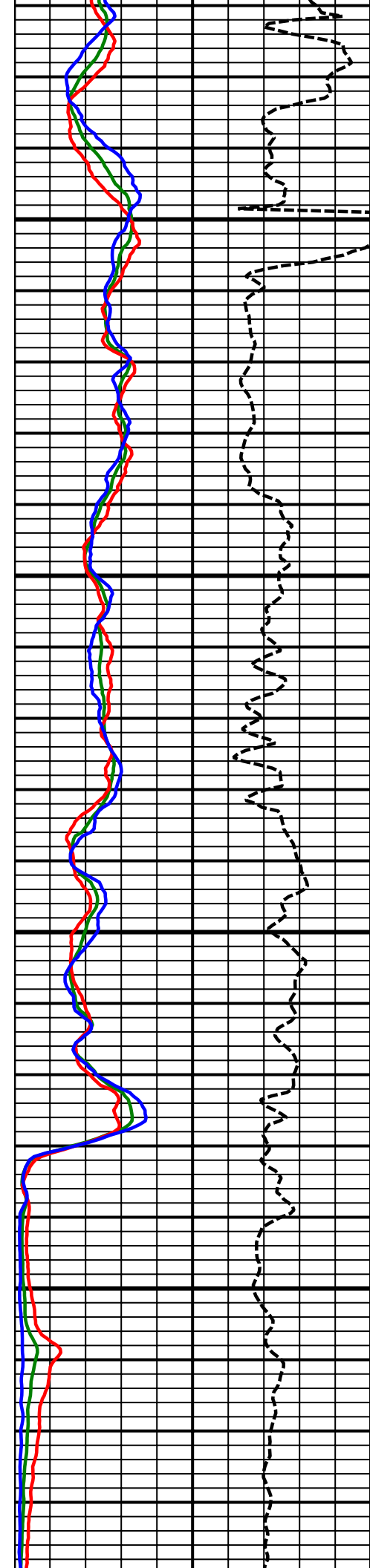




10700
MD

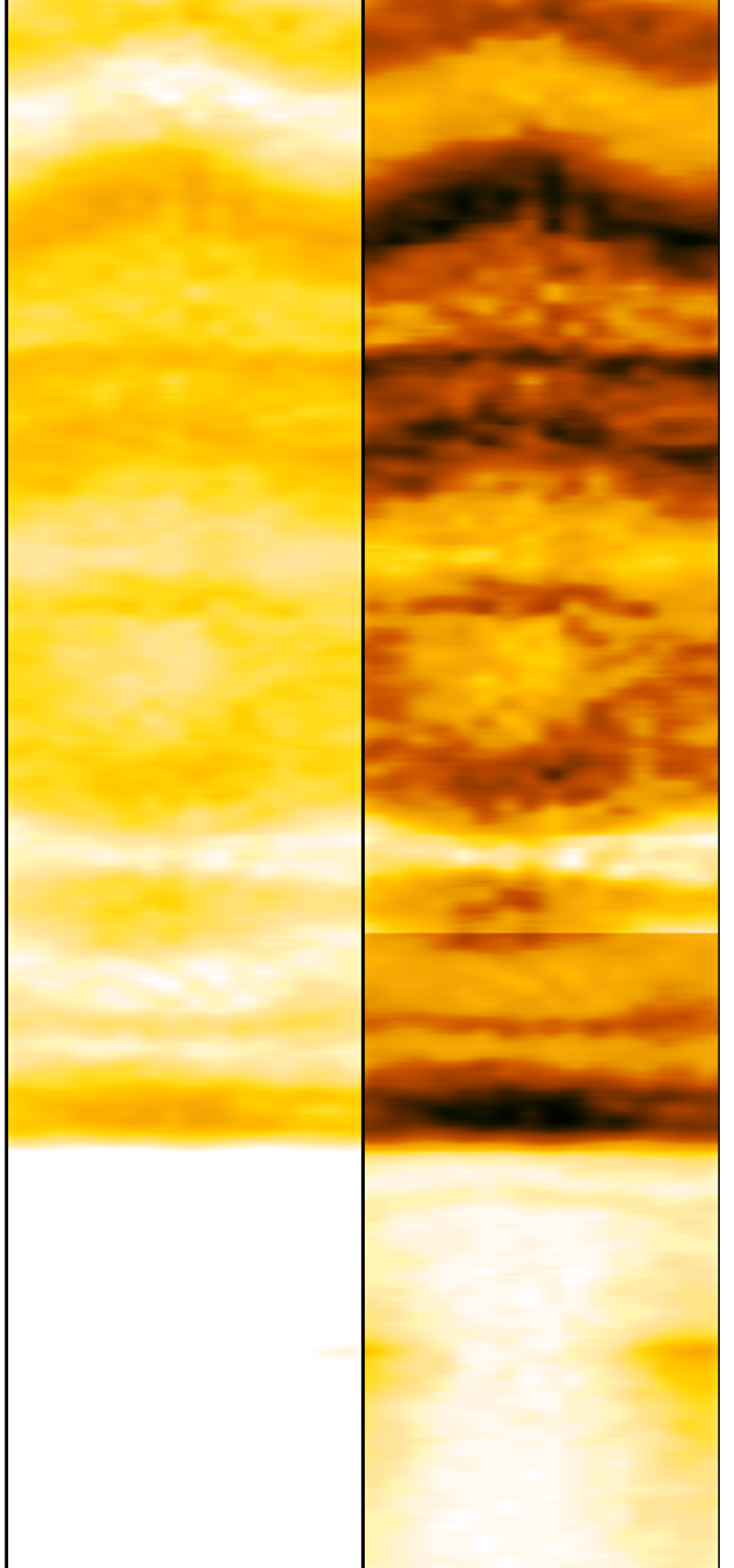
10800
MD

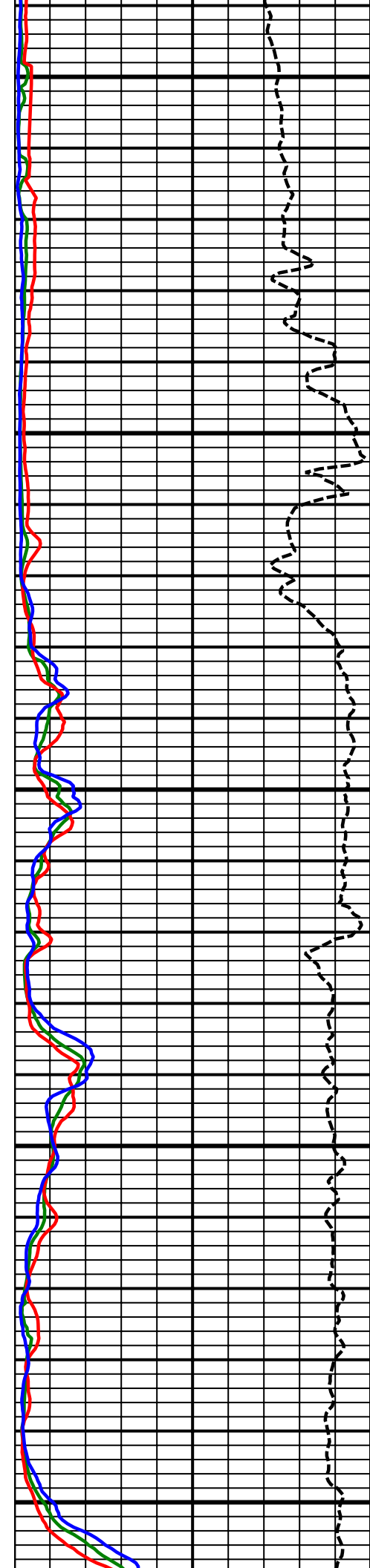




10900
MD

11000
MD

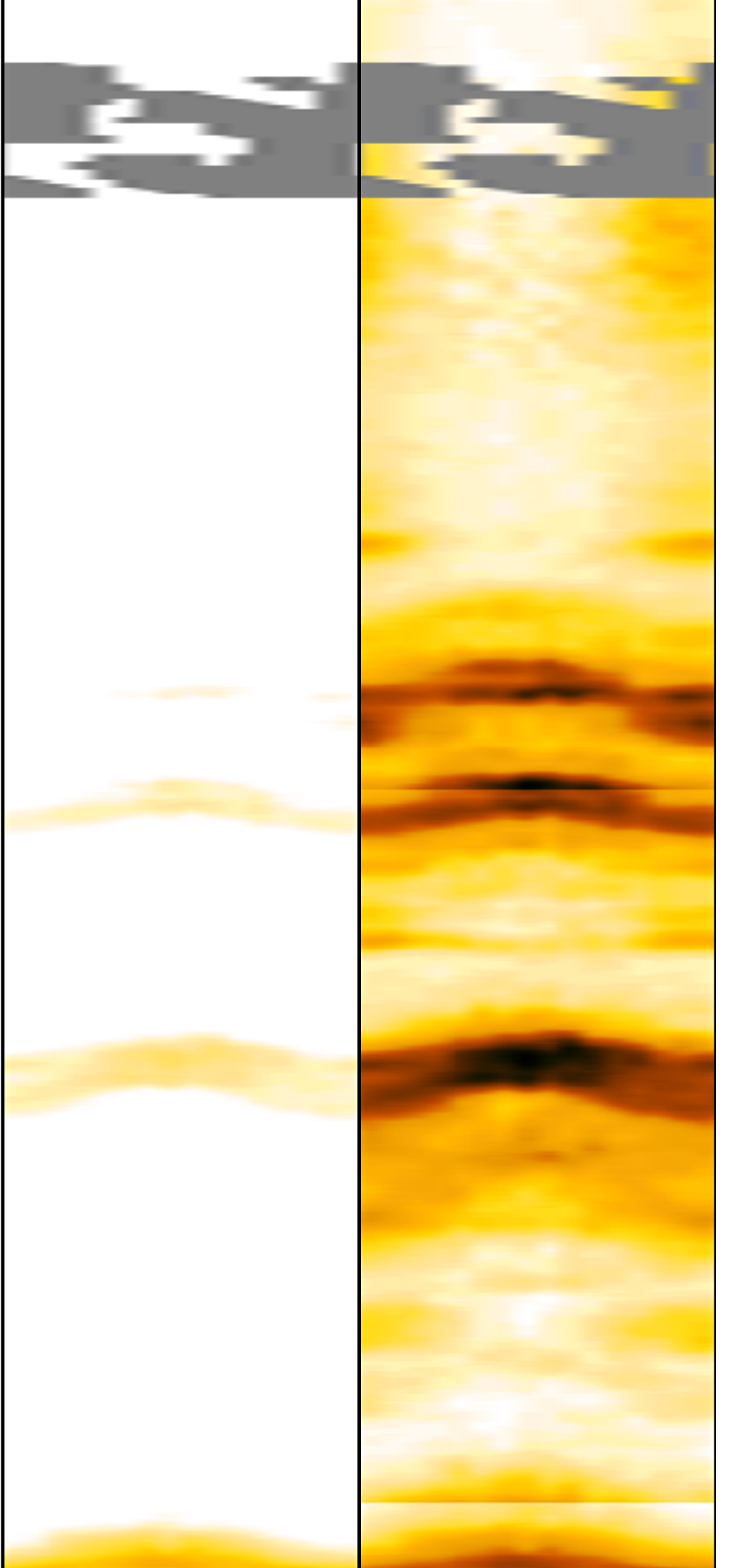


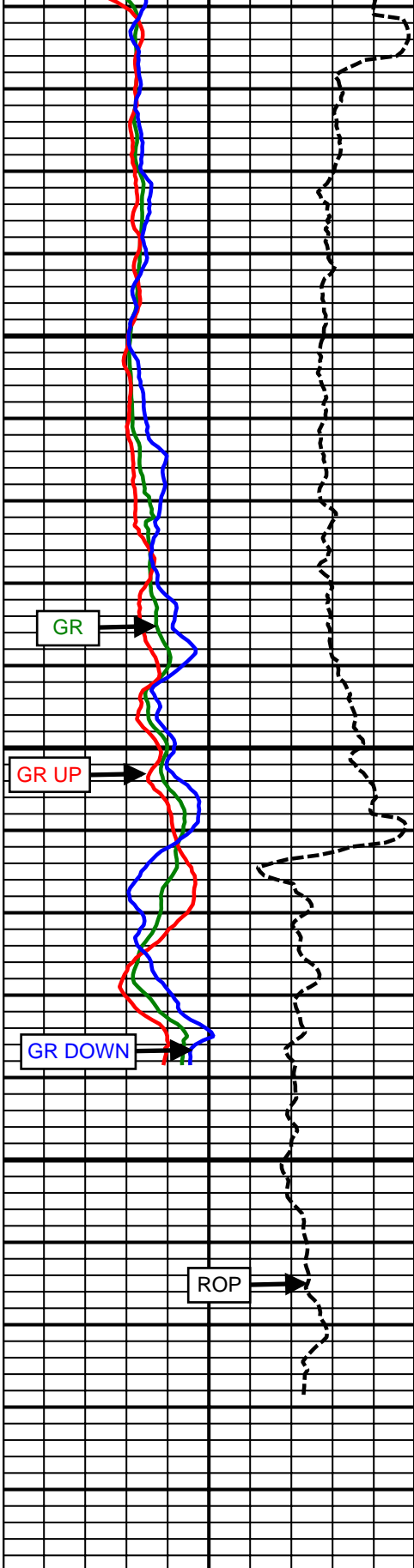


11100
MD

11200
MD

11300
MD



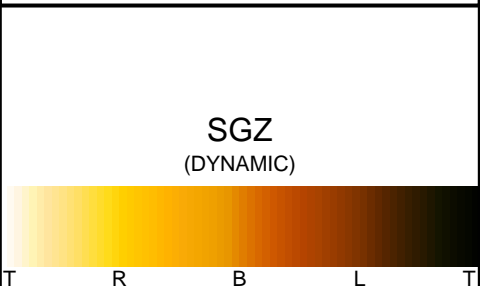
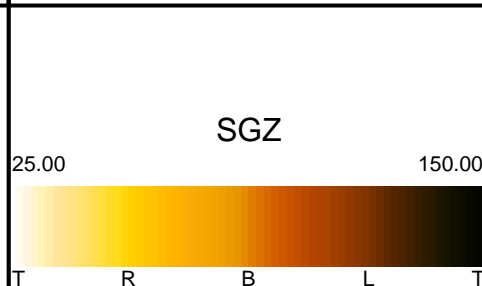
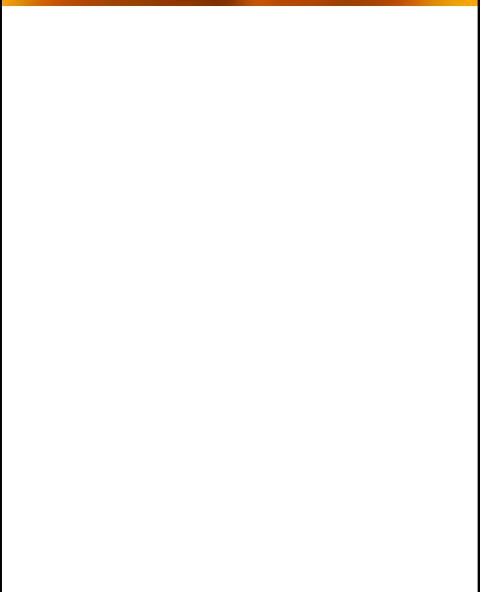
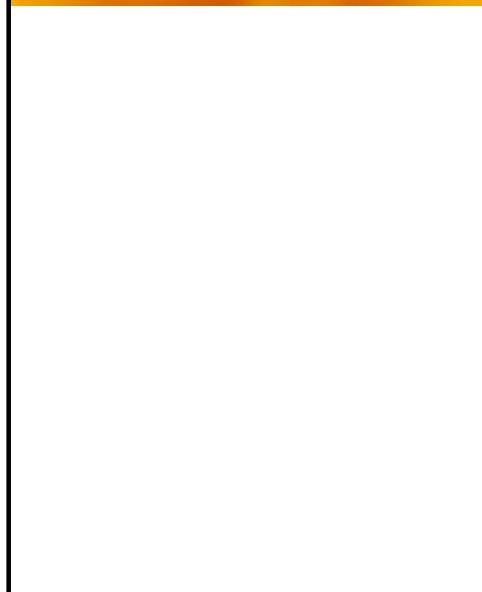
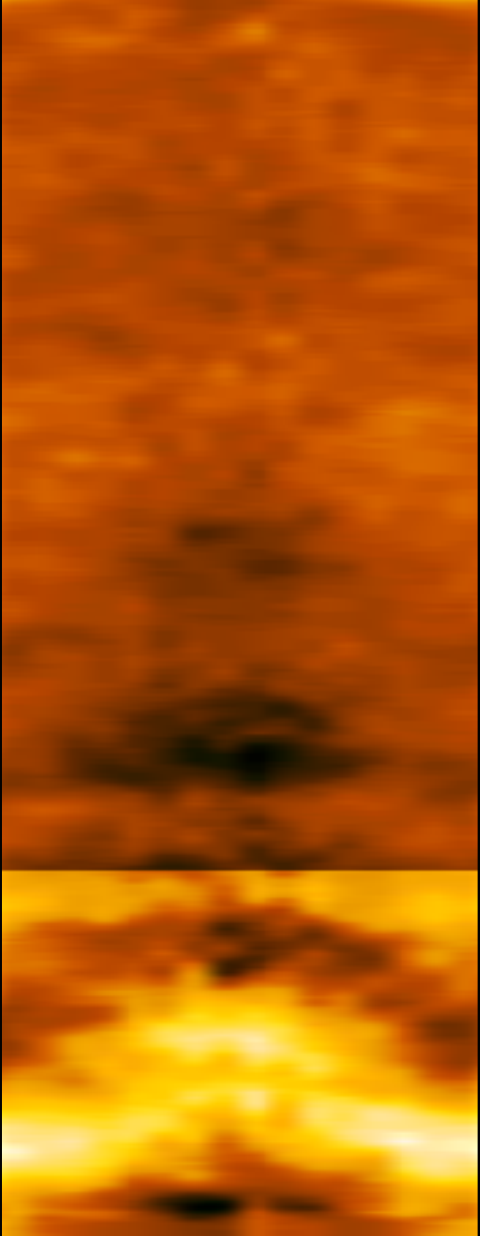
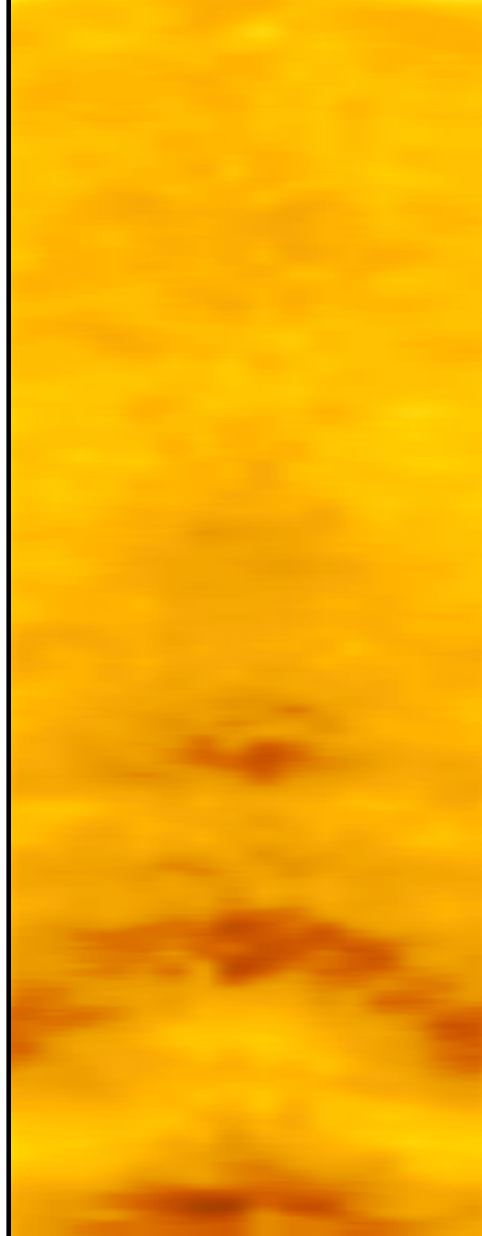


11400
MD

Comment
3-2

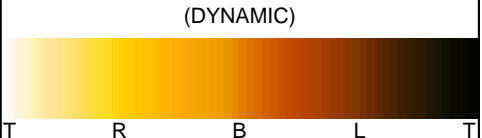
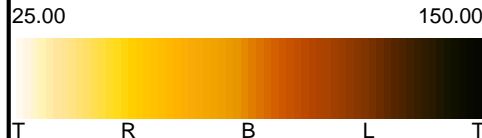
11500

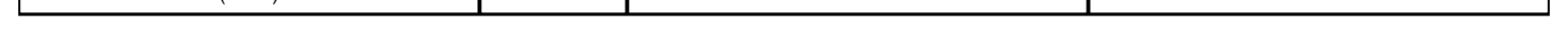
500	ROP	0
	(fph)	
	GR	
0	(AAPI)	200
	GR UP	
0	(AAPI)	200
	GR DOWN	
0	(AAPI)	200



SGZ

SGZ
(DYNAMIC)





SURVEY

Survey Calculation Method: **Minimum Curvature**

Magnetic Reference	Target Direction	Total Magnetic Field	Magnetic Dip Angle	Magnetic Declination	Grid Convergence	Total Correction
True North	179.65 deg	52906 nT	66.94 deg	8.70 deg	0.00 deg	8.70 deg
Survey Tie-On	Depth	INC	AZ	TVD	NS	EW
	749.00 ft	0.12 deg	57.17 deg	749.00 ft	0.77 ft	-0.26 ft

Depth (ft)	Inc (deg)	Azm (deg)	TVD (ft)	Well Head		VSect (ft)	Dogleg (deg/100ft)
				NS (ft)	EW (ft)		
949.00	0.25	292.61	949.00	1.05	-0.49	-1.05	0.17
1039.00	0.56	310.60	1039.00	1.41	-1.00	-1.42	0.37
1130.00	1.93	9.37	1129.98	3.21	-1.09	-3.22	1.88
1221.00	4.06	17.55	1220.85	7.80	0.13	-7.80	2.38
1314.00	6.03	16.38	1313.48	15.62	2.50	-15.61	2.12
1406.00	6.60	14.38	1404.92	25.38	5.18	-25.35	0.66
1501.00	6.56	14.05	1499.30	35.94	7.85	-35.89	0.06
1596.00	6.59	5.01	1593.68	46.63	9.64	-46.57	1.09
1691.00	6.13	1.30	1688.09	57.13	10.24	-57.07	0.65
1786.00	5.90	3.14	1782.57	67.08	10.62	-67.01	0.32
1881.00	5.97	13.19	1877.06	76.76	12.01	-76.69	1.09
1975.00	5.43	13.92	1970.60	85.84	14.20	-85.75	0.58
2070.00	4.87	10.40	2065.21	94.17	16.01	-94.07	0.68
2165.00	6.32	14.24	2159.76	103.20	18.02	-103.09	1.58
2260.00	5.36	12.02	2254.26	112.61	20.23	-112.49	1.04
2355.00	6.32	16.41	2348.77	121.97	22.63	-121.83	1.11
2449.00	5.40	14.73	2442.28	131.21	25.22	-131.05	1.00
2545.00	6.99	12.44	2537.71	141.28	27.63	-141.11	1.68
2640.00	5.60	10.21	2632.14	151.49	29.69	-151.31	1.49
2734.00	4.69	3.87	2725.76	159.84	30.77	-159.65	1.14
2829.00	6.31	10.97	2820.32	168.84	32.02	-168.64	1.85
2924.00	5.98	9.76	2914.77	178.84	33.85	-178.63	0.37
3018.00	5.45	7.70	3008.31	188.09	35.28	-187.87	0.60
3113.00	6.16	19.46	3102.82	197.37	37.58	-197.13	1.45
3208.00	4.69	21.42	3197.39	205.79	40.70	-205.54	1.56
3303.00	5.68	19.71	3292.01	213.83	43.71	-213.56	1.05
3399.00	6.32	11.49	3387.48	223.48	46.36	-223.19	1.11
3494.00	4.96	11.26	3482.02	232.63	48.20	-232.34	1.43
3589.00	3.65	356.56	3576.75	239.68	48.82	-239.38	1.79
3683.00	1.86	331.73	3670.64	244.01	47.92	-243.71	2.25
3777.00	0.80	261.11	3764.62	245.25	46.55	-244.97	1.88
3873.00	0.74	261.92	3860.61	245.06	45.28	-244.78	0.06
3967.00	0.90	267.49	3954.60	244.95	43.94	-244.67	0.19
4062.00	0.38	142.99	4049.60	244.66	43.38	-244.39	1.22
4157.00	0.20	1.16	4144.60	244.58	43.57	-244.30	0.58
4252.00	0.69	320.96	4239.59	245.19	43.22	-244.92	0.58
4346.00	1.09	328.14	4333.58	246.38	42.39	-246.12	0.44
4440.00	0.80	244.93	4427.57	246.87	41.32	-246.61	1.35
4535.00	1.09	268.83	4522.56	246.57	39.82	-246.32	0.51
4630.00	1.05	152.66	4617.55	245.77	39.31	-245.53	1.91
4724.00	0.97	145.03	4711.54	244.36	40.17	-244.11	0.17
4819.00	0.58	55.98	4806.53	243.97	41.03	-243.71	1.18

4913.00	0.73	23.83	4900.53	244.78	41.66	-244.52	0.42
5008.00	1.41	143.21	4995.52	244.40	42.61	-244.13	1.98
5103.00	1.00	164.58	5090.49	242.66	43.53	-242.39	0.63
5198.00	0.63	178.44	5185.49	241.34	43.76	-241.07	0.44
5292.00	0.49	213.29	5279.48	240.49	43.55	-240.22	0.38
5387.00	0.51	230.60	5374.48	239.88	43.00	-239.62	0.16
5482.00	0.29	215.02	5469.47	239.42	42.54	-239.15	0.26
5576.00	0.20	286.27	5563.47	239.27	42.25	-239.01	0.31
5672.00	0.22	241.79	5659.47	239.23	41.92	-238.97	0.17
5767.00	0.73	187.99	5754.47	238.54	41.68	-238.28	0.66
5863.00	0.97	200.01	5850.46	237.17	41.32	-236.92	0.31
5958.00	1.21	205.76	5945.44	235.51	40.60	-235.26	0.28
6052.00	0.56	185.90	6039.43	234.16	40.13	-233.91	0.75
6147.00	0.72	193.72	6134.42	233.12	39.94	-232.87	0.19
6242.00	0.91	191.80	6229.42	231.80	39.64	-231.56	0.20
6337.00	1.22	209.70	6324.40	230.19	38.98	-229.94	0.47
6432.00	1.06	194.02	6419.38	228.46	38.27	-228.22	0.37
6526.00	3.83	171.93	6513.29	224.50	38.50	-224.26	3.06
6558.00	8.07	178.32	6545.11	221.20	38.72	-220.96	13.39
6590.00	11.85	178.16	6576.62	215.67	38.89	-215.43	11.81
6621.00	14.64	179.45	6606.79	208.57	39.03	-208.32	9.05
6654.00	17.06	177.90	6638.54	199.56	39.25	-199.31	7.44
6685.00	20.44	177.11	6667.89	189.60	39.69	-189.36	10.93
6717.00	21.54	177.91	6697.76	178.15	40.18	-177.90	3.55
6749.00	20.72	177.59	6727.61	166.63	40.63	-166.38	2.59
6780.00	19.75	176.39	6756.70	155.92	41.19	-155.67	3.40
6812.00	20.49	175.45	6786.74	144.94	41.98	-144.68	2.52
6843.00	23.52	178.41	6815.48	133.35	42.58	-133.08	10.41
6875.00	26.88	183.72	6844.44	119.74	42.29	-119.48	12.65
6907.00	30.00	185.38	6872.57	104.55	41.07	-104.30	10.06
6938.00	32.82	183.45	6899.03	88.45	39.84	-88.20	9.66
6970.00	35.57	182.12	6925.49	70.49	38.97	-70.25	8.91
7001.00	39.53	181.32	6950.07	51.61	38.41	-51.37	12.87
7033.00	42.93	180.02	6974.13	30.52	38.17	-30.29	10.96
7064.00	46.89	179.14	6996.08	8.64	38.34	-8.41	12.93
7096.00	49.77	178.78	7017.35	-15.26	38.77	15.49	9.04
7128.00	51.42	178.64	7037.67	-39.98	39.33	40.22	5.17
7159.00	53.40	179.18	7056.57	-64.53	39.80	64.78	6.53
7191.00	57.02	179.81	7074.83	-90.81	40.02	91.05	11.43
7222.00	61.47	179.96	7090.68	-117.44	40.08	117.69	14.36
7254.00	66.47	179.77	7104.72	-146.19	40.14	146.43	15.63
7285.00	70.39	180.66	7116.11	-175.01	40.03	175.25	12.92
7318.00	73.62	180.75	7126.31	-206.39	39.65	206.63	9.79
7349.00	76.81	179.88	7134.22	-236.36	39.48	236.60	10.64
7381.00	79.31	178.95	7140.84	-267.66	39.81	267.90	8.31
7412.00	80.51	178.14	7146.27	-298.17	40.58	298.41	4.65
7444.00	82.63	178.26	7150.96	-329.81	41.57	330.06	6.64
7560.00	89.32	179.69	7159.10	-445.43	43.64	445.69	5.90
7655.00	89.94	178.49	7159.71	-540.42	45.15	540.68	1.42
7750.00	90.06	178.23	7159.71	-635.38	47.86	635.66	0.30
7844.00	91.23	178.00	7158.65	-729.32	50.96	729.62	1.27
7939.00	92.16	179.92	7155.84	-824.26	52.68	824.57	2.24
8034.00	91.48	179.59	7152.82	-919.21	53.09	919.52	0.80
8129.00	91.48	180.48	7150.37	-1014.18	53.03	1014.48	0.94
8224.00	90.74	180.71	7148.53	-1109.15	52.04	1109.45	0.82
8319.00	90.06	180.02	7147.87	-1204.15	51.44	1204.44	1.02
8414.00	91.66	180.17	7146.44	-1299.13	51.28	1299.42	1.69
8509.00	90.55	179.19	7144.61	-1394.11	51.81	1394.40	1.56
8604.00	90.86	180.02	7143.44	-1489.10	52.47	1489.39	0.93
8699.00	90.43	180.34	7142.37	-1584.09	52.17	1584.38	0.56
8794.00	91.97	181.22	7140.38	-1679.06	50.87	1679.34	1.87

8889.00	91.66	180.54	7137.37	-1774.00	49.42	1774.27	0.79
8983.00	92.46	182.96	7133.99	-1867.89	46.55	1868.14	2.71
9079.00	91.76	181.47	7130.46	-1963.75	42.84	1963.97	1.71
9174.00	91.36	181.51	7127.87	-2058.68	40.37	2058.89	0.42
9268.00	90.86	181.32	7126.05	-2152.63	38.05	2152.83	0.57
9363.00	90.43	182.45	7124.98	-2247.58	34.93	2247.75	1.27
9459.00	90.18	183.01	7124.47	-2343.46	30.35	2343.61	0.64
9553.00	90.06	180.68	7124.27	-2437.41	27.33	2437.53	2.48
9648.00	89.20	181.04	7124.89	-2532.40	25.90	2532.51	0.98
9743.00	90.12	179.56	7125.45	-2627.39	25.40	2627.50	1.83
9837.00	91.05	179.30	7124.49	-2721.38	26.34	2721.49	1.03
9933.00	90.74	178.73	7122.99	-2817.35	27.99	2817.47	0.68
10028.00	90.12	178.27	7122.28	-2912.32	30.48	2912.45	0.81
10123.00	91.66	177.80	7120.80	-3007.25	33.73	3007.40	1.69
10218.00	90.86	177.97	7118.71	-3102.16	37.24	3102.33	0.86
10314.00	87.59	174.29	7120.01	-3197.90	43.71	3198.11	5.13
10409.00	88.21	173.36	7123.49	-3292.28	53.93	3292.55	1.18
10504.00	90.43	173.48	7124.62	-3386.65	64.81	3386.98	2.34
10599.00	91.85	174.89	7122.73	-3481.13	74.43	3481.52	2.11
10693.00	93.57	176.40	7118.29	-3574.75	81.56	3575.18	2.43
10788.00	93.21	176.48	7112.67	-3669.40	87.45	3669.87	0.39
10883.00	91.66	175.30	7108.63	-3764.07	94.25	3764.57	2.05
10978.00	90.93	175.09	7106.49	-3858.71	102.21	3859.26	0.80
11074.00	89.69	174.13	7105.97	-3954.28	111.23	3954.88	1.63
11169.00	88.52	171.29	7107.45	-4048.49	123.28	4049.17	3.23
11264.00	87.28	171.05	7110.93	-4142.30	137.85	4143.06	1.33
11359.00	86.21	170.37	7116.33	-4235.90	153.16	4236.76	1.33
11425.00	86.05	170.64	7120.78	-4300.85	164.02	4301.77	0.47
11477.00	86.05	170.64	7124.36	-4352.03	172.46	4353.00	0.00

Weatherford M/LWD surveys from 949 ft MD to 11425 ft MD.

TD at 11477.00 ft MD.

The total correction is 8.70 deg relative to True North.



Weatherford[®]

Final Print

COMPANY	<u>Anadarko</u>		
WELL	<u>Cannon 37C-3HZ</u>		
FIELD	<u>Wattenberg</u>		
RIG	<u>H&P 307</u>		
LOC.	<u>Colorado</u>	COUNTY	<u>Weld</u>