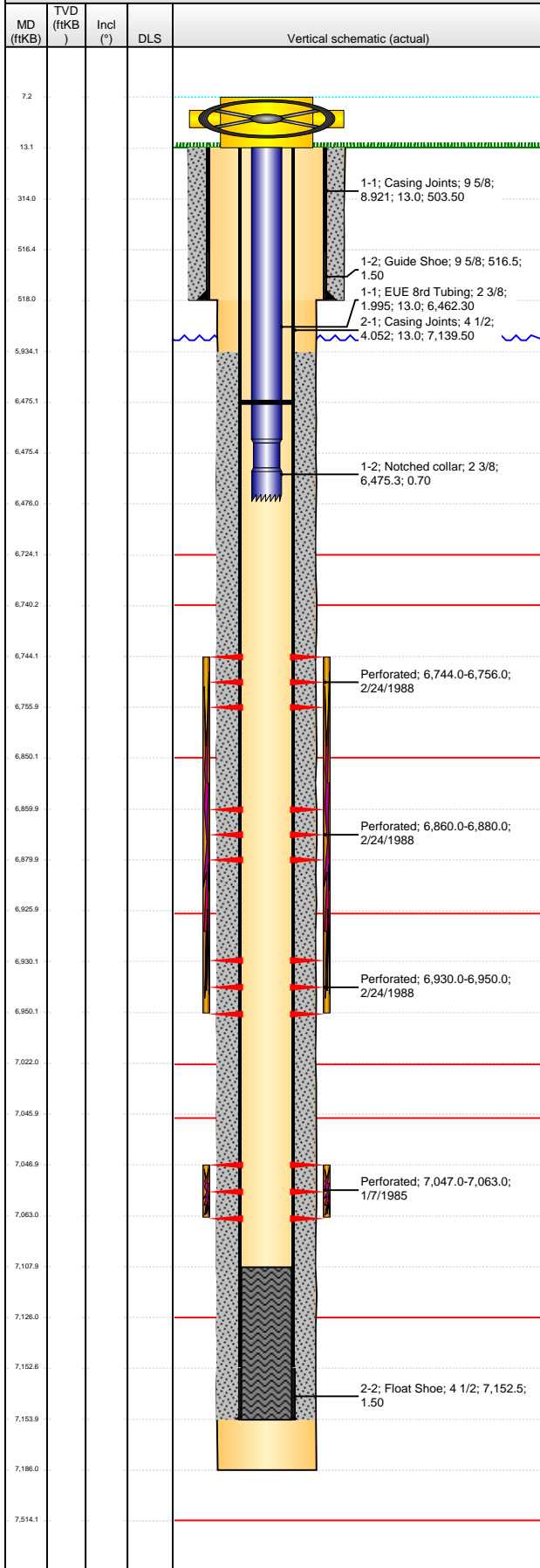


**Well Name: KEISER 01**

VERTICAL - ORIGINAL HOLE, 2/14/2013 1:01:31 PM



## Well Header

API	Business Unit	District	Well Config
05-123-12144	WATTENBERG	15	VERTICAL
Original KB Elevation (ft)	KB - GL / MSL (ftKB)	Spud Date	P & A Date
4,676.00	13.00	12/15/1984	

## Comment

POSSIBLE COLLAPSED CASING @ 6487'

## Directions To Well

## Congressional Location

Quarter 1	Quarter 2	Quarter 3	Quarter 4	Section	Township	Twntshp N...	Range	Rng E/W Dir
		NE	SW	33	5	N	65	W

## Bottom Hole Location

North-South Distance (ft)	From N or S Line	East-West Distance (ft)	From E or W Line

## Plug Back Total Depths

Date	Depth (ftKB)	Method	Com
1/2/1985	7,108.0	CASED HOLE LOG	DEPTH LOGGER ON CBL
2/15/2007	6,475.0	TAG	COLLAPSED CSG

## Wellbore Sections

Section Des	Size (in)	Act Top (ftKB)	Act Btm (ftKB)
SURFACE	12 1/4	13.0	518.0
PRODUCTION	7 7/8	518.0	7,186.0

## Zone Statuses

Zone Name	Status Date	Status	Job
NIOBRARA	2/27/1988	PR	RECOMPLETION, 2/24/1988 00:00
CODELL	1/17/1985	PR	DRILLING/COMPLETION - ORIGINAL, 12/15/1984 00:00

## Casing Strings

### Surface, 518.0ftKB

Casing Description	Run Date	OD (in)	Wt/Len (l...)	Grade	Top (ftKB)	Set Depth...
Surface	12/16/1984	9 5/8	36.00	?	13.0	518.0

### Production, 7,154.0ftKB

Casing Description	Run Date	OD (in)	Wt/Len (l...)	Grade	Top (ftKB)	Set Depth...
Production	12/22/1984	4 1/2	10.50	?	13.0	7,154.0

## Cement

Description	Top Depth (ftKB)	Bottom Depth (ftKB)
SURFACE CASING CEMENT	13.0	518.0
Description	Top Depth (ftKB)	Bottom Depth (ftKB)
PRODUCTION CASING CEMENT	5,934.0	7,154.0

## Tubing Components

Item Des	OD (in)	Wt (lb/ft)	Grade	Jts	Len (ft)	Btm (ftKB)	Btm (TVD) (ftKB)
EUE 8rd Tubing	2 3/8	4.70	J-55	201	6,462.30	6,475.3	
Notched collar	2 3/8				0.70	6,476.0	

## Perforation Data

Zone	Bnch/St g	Entered Shot Total	Top (ftKB)	Btm (ftKB)	Date
NIOBRARA, ORIGINAL HOLE	A	2	6,744.00	6,756.00	2/24/1988
NIOBRARA, ORIGINAL HOLE	B	10	6,860.00	6,880.00	2/24/1988
NIOBRARA, ORIGINAL HOLE	C	3	6,930.00	6,950.00	2/24/1988
CODELL, ORIGINAL HOLE		17	7,047.00	7,063.00	1/7/1985

## Stimulations & Treatments

Date	Zone	Primary Job Type
1/8/1985	CODELL, ORIGINAL HOLE	DRILLING/COMPLETION - ORIGINAL
Technical Result		Tech Result Details
		Tech Result Note

## Comment

NO PRESSURES OR RATES AVAILABLE

Date	Zone	Primary Job Type
2/25/1988	NIOBRARA, ORIGINAL HOLE	RECOMPLETION
Technical Result		Tech Result Details
		Tech Result Note

## Comment

## Other In Hole

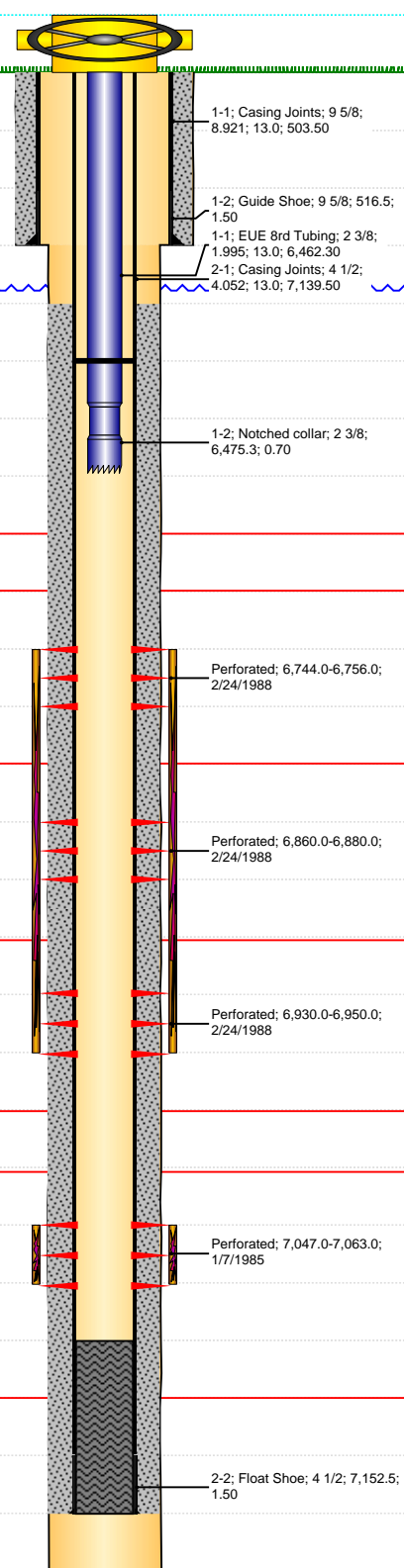
Run Date	Des	OD (in)	Top (ftKB)	Btm (ftKB)

## Logs

Date	Type	Top (ftKB)	Btm (ftKB)
12/21/1984	GAMMA RAY	4,250.0	7,184.0

**Well Name: KEISER 01**

VERTICAL - ORIGINAL HOLE, 2/14/2013 1:01:32 PM

VERTICAL - ORIGINAL HOLE, 2/14/2013 1:01:32 PM						Logs			
MD (ftKB)	TVD (ftKB)	Incl (°)	DLS	Vertical schematic (actual)	Logs	Date	Type	Top (ftKB)	Btm (ftKB)
						12/21/1984	INDUCTION	4,250.0	7,184.0
						1/2/1985	CBL/CCL/GR	518.0	7,102.0
						1/19/2013	GYRO	13.0	6,400.0
7.2									
13.1									
314.0									
516.4									
518.0									
5,934.1									
6,475.1									
6,475.4									
6,476.0									
6,724.1									
6,740.2									
6,744.1									
6,755.9									
6,850.1									
6,859.9									
6,879.9									
6,925.9									
6,930.1									
6,950.1									
7,022.0									
7,045.9									
7,046.9									
7,063.0									
7,107.9									
7,126.0									
7,152.6									
7,153.9									
7,186.0									
7,514.1									