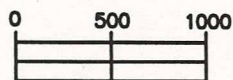
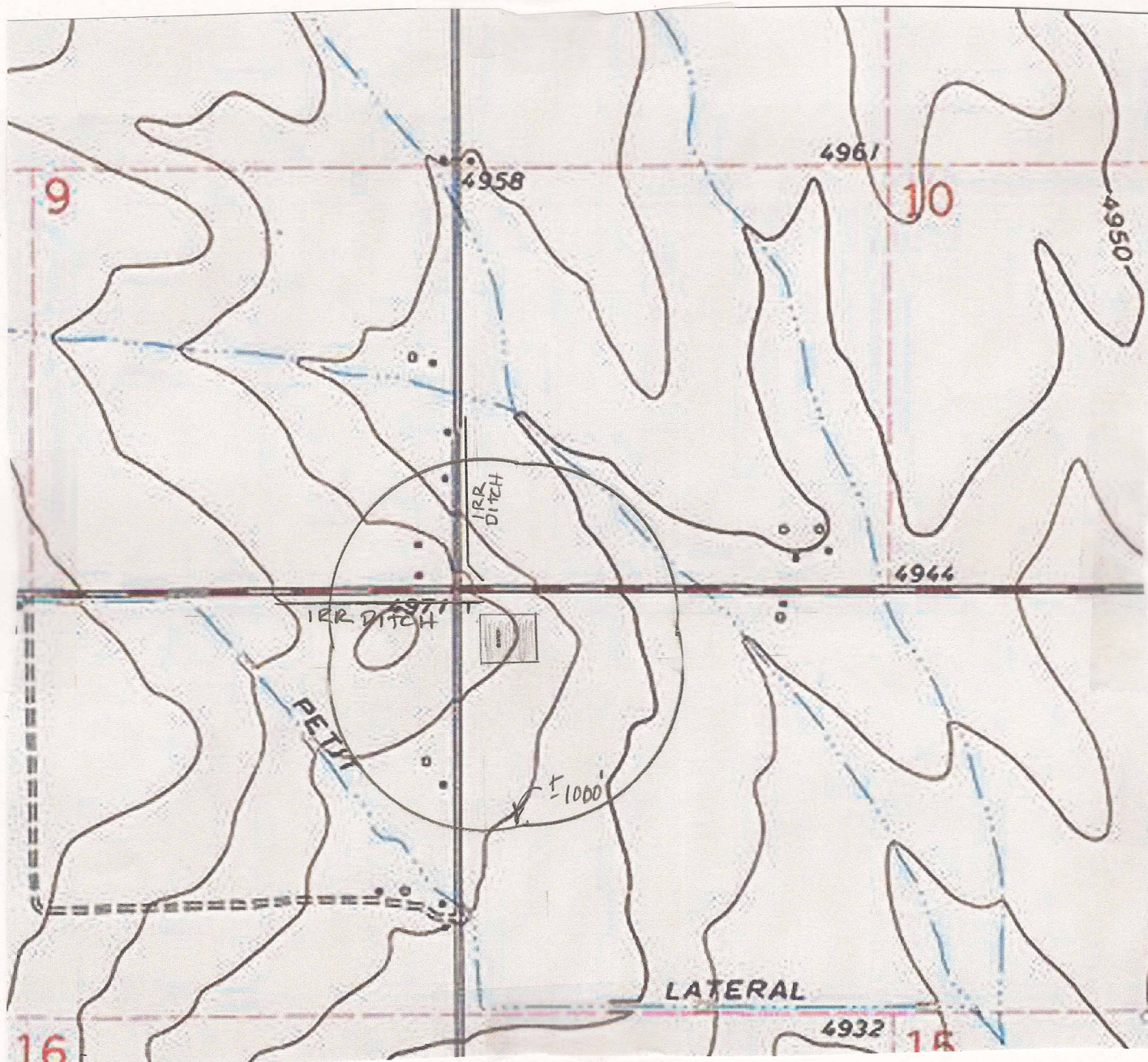


HYDROLOGY / TOPOGRAPHY MAP

NW1/4 SEC. 15 T7N R66W, 6TH P.M.



APPROX. SCALE
1" = 1000'

IRRIGATION DITCHES ARE 346' NW & 433' NW.

AN IRRIGATION PIPE IS 322' N.

NO OTHER VISIBLE WATER FEATURES WITHIN 1000' OF DISTURBANCE.

PREPARED BY:

HORSESHOE SURVEYING, LLC
PO BOX 150458
LAKEWOOD, CO 80215
(720)872-0196

DRAWING DATE:

2-13-13

FIELD DATE:

4-23-12

BY:

TGC

WELL NAME:

THORNTON 15E-HZ Pad
15E-232, 15E-432, 15F-212, 15F-432

LOCATION:

WELD COUNTY, CO
NW1/4, SEC. 15, T7N, R66W, 6TH P.M.