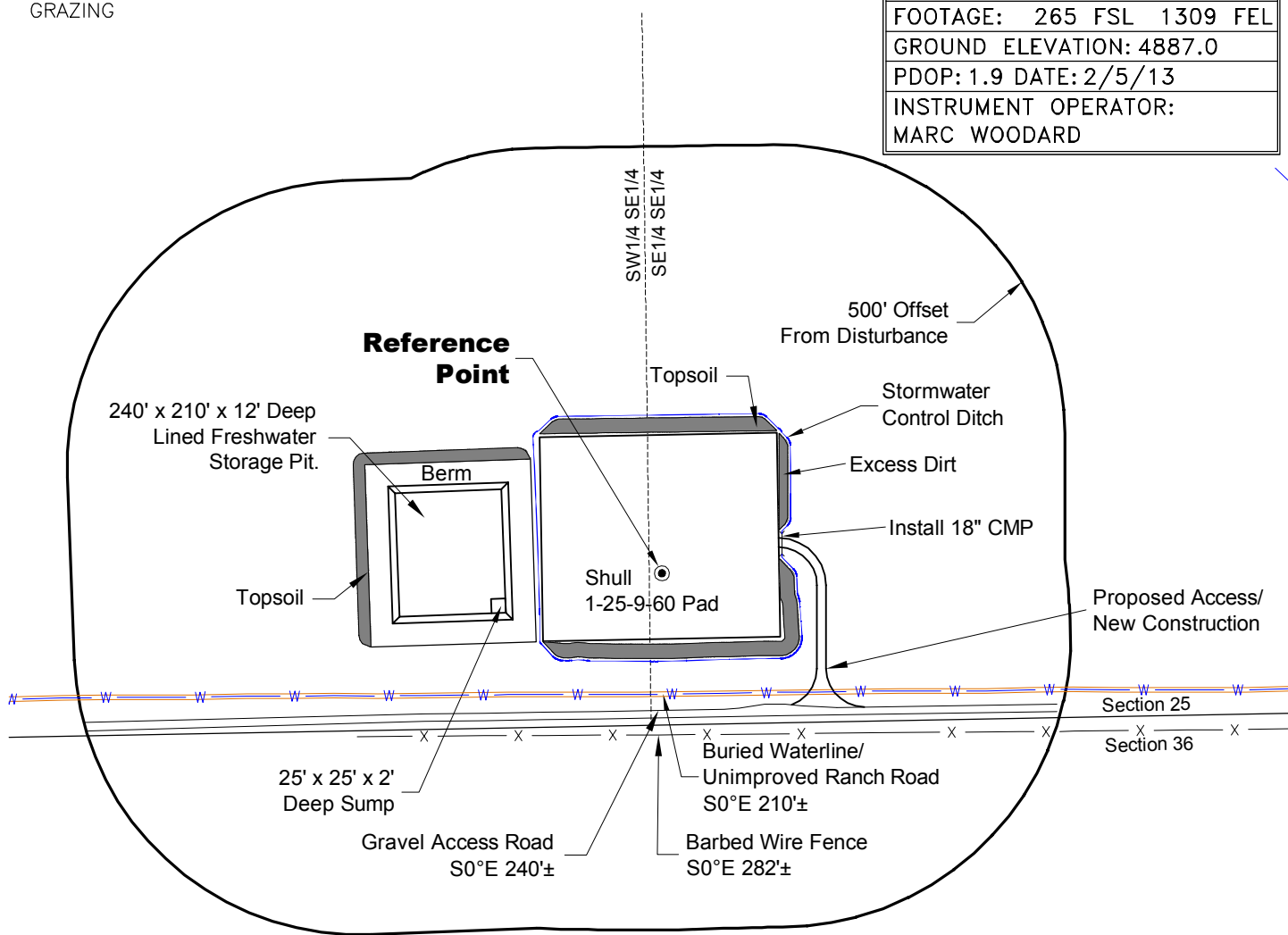


# LOCATION DRAWING

**VEGETATION:**  
GRASSLAND PASTURE

**SURFACE USE:**  
GRAZING

REFERENCE POINT
LATITUDE: 40.71469
LONGITUDE: -104.03506
FOOTAGE: 265 FSL 1309 FEL
GROUND ELEVATION: 4887.0
PDOP: 1.9 DATE: 2/5/13
INSTRUMENT OPERATOR: MARC WOODARD

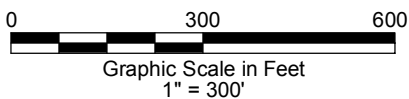


**NOTE-DISTANCE TO NEAREST:**  
 Property Line - S 265'  
 Public Road - WCR 100 - S 86° W 4,025±  
 Building - S 84° W 3,850±  
 Railroad - UPRR S 33 Miles±  
 Powerline - S 84° W 3,850±

**DISTURBANCE ACREAGE:**  
 4.6± DRILLING OPERATIONS  
 2.3± FRESHWATER STORAGE PIT

**NOTE:**  
 ALL PRODUCTION FACILITIES WILL BE ON PAD.

2/11/13



**LAND SURVEYING AND MAPPING**  
**LAFAYETTE - WINTER PARK**  
 Ph 303 666 0379 Fx 303 665 6320

**CARRIZO NIOBRARA LLC**  
**SHULL 1-25-9-60 PAD**

**SE1/4 SE1/4 SECTION 25 T9N R60W**  
**6th PM WELD COUNTY COLORADO**