

CONSTRUCTION LAYOUT DRAWING

1 of 2

VEGETATION:
GRASSLAND PASTURE

SURFACE USE:
GRAZING

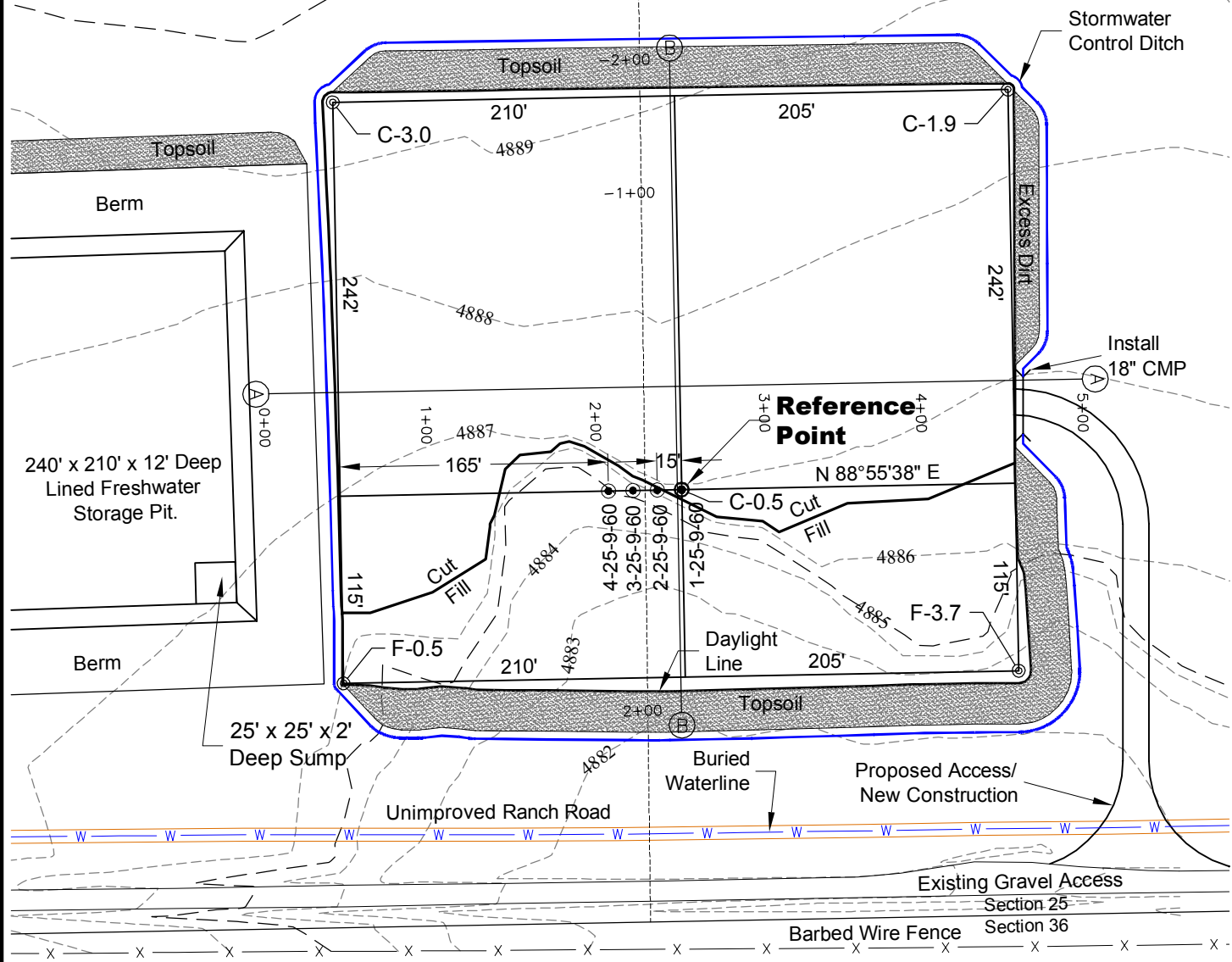
PAD 357'X415' ELEV= 4886.5'

DISTURBED AREA=4.6± ACRES

ESTIMATED DIRT QUANTITIES

CUTx10%	FILL	TOPSOIL	EXCESS
6,210	3,190	2,860	160

NOTE: VOLUMES IN CUBIC YARDS. TOPSOIL INCLUDED IN VOLUMES AT A DEPTH OF 6".



DWG: G:\GEO SURV\Weisz\North\Corrizo 110004\Wellplats\Shull 25-9-60\Shull 1-25-9-60 F2A R2.dwg USER: MTC DATE: Feb 11, 2013 4:21pm



North

0 100 200

Graphic Scale in Feet
1" = 100'

2/11/13



LAND SURVEYING AND MAPPING
LAFAYETTE - WINTER PARK
Ph 303 666 0379 Fx 303 665 6320

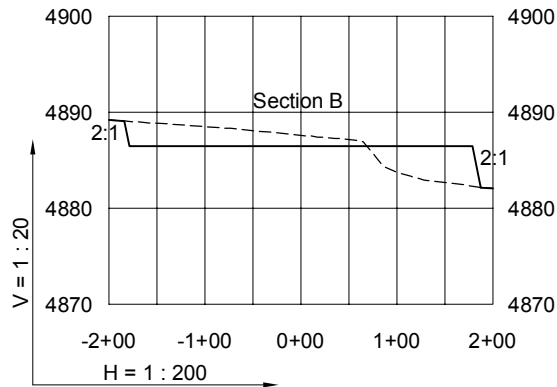
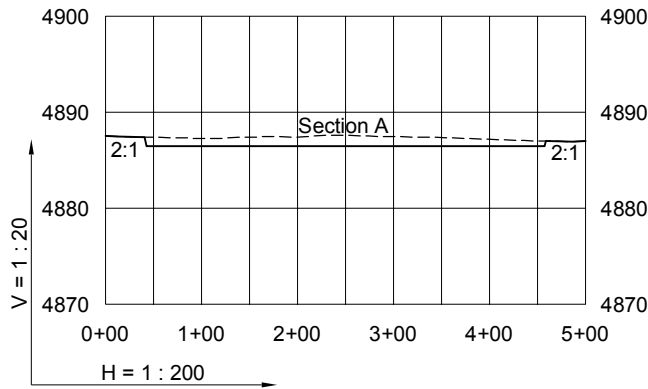
NOTE:
10% ALLOWANCE IS MADE FOR SOIL EXPANSION.

CARRIZO NIOBRARA LLC
SHULL 1-25-9-60 PAD

SE1/4 SE1/4 SECTION 25 T9N R6W
6th PM WELD COUNTY COLORADO

CONSTRUCTION LAYOUT DRAWING

2 of 2



2/11/13

----- Existing Ground
 _____ Proposed Grade

GEO SURV

LAND SURVEYING AND MAPPING
 LAFAYETTE - WINTER PARK
 Ph 303 666 0379 Fx 303 665 6320

CARRIZO NIOBRARA LLC
 SHULL 1-25-9-60 PAD

SE1/4 SE1/4 SECTION 25 T9N R6W
6th PM WELD COUNTY COLORADO