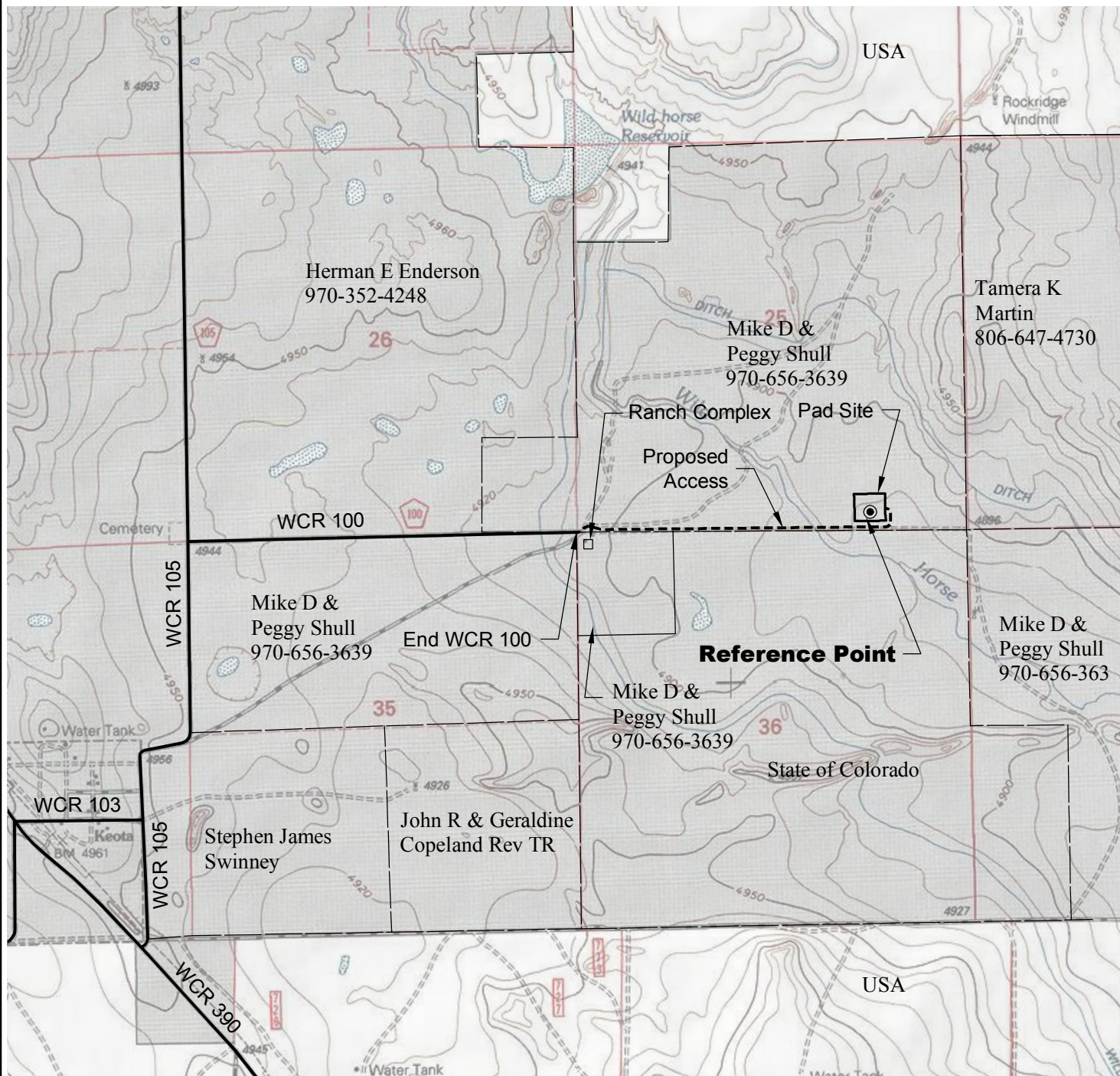


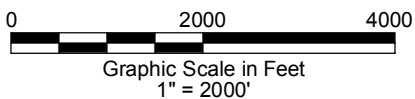
# ACCESS ROAD MAP



### DRIVING DIRECTIONS:

- MP 0.0 - Intersection of WCR 103 & WCR 105 in Keota;
- North on WCR 105
- MP 0.8 - Right (East) on WCR 100
- MP 1.8 - End WCR 100, continue east on access to Pad
- MP 2.6 - Left on access to Pad
- MP 2.7 - Shull 1-25-9-60 Pad

2/11/13



**LAND SURVEYING AND MAPPING**  
**LAFAYETTE - WINTER PARK**  
 Ph 303 666 0379 Fx 303 665 6320

**CARRIZO NIOBRARA LLC**  
**SHULL 1-25-9-60 PAD**

**SE1/4 SE1/4 SECTION 25 T9N R60W**  
**6th PM WELD COUNTY COLORADO**

DWG: G:\GEO\SURV\Weisz\North\Carrizo 110004\Wellplate\Shull 25-9-60\Shull 1-25-9-60 F2A R2.dwg USER: MTC DATE: Feb 11, 2013 4:20pm