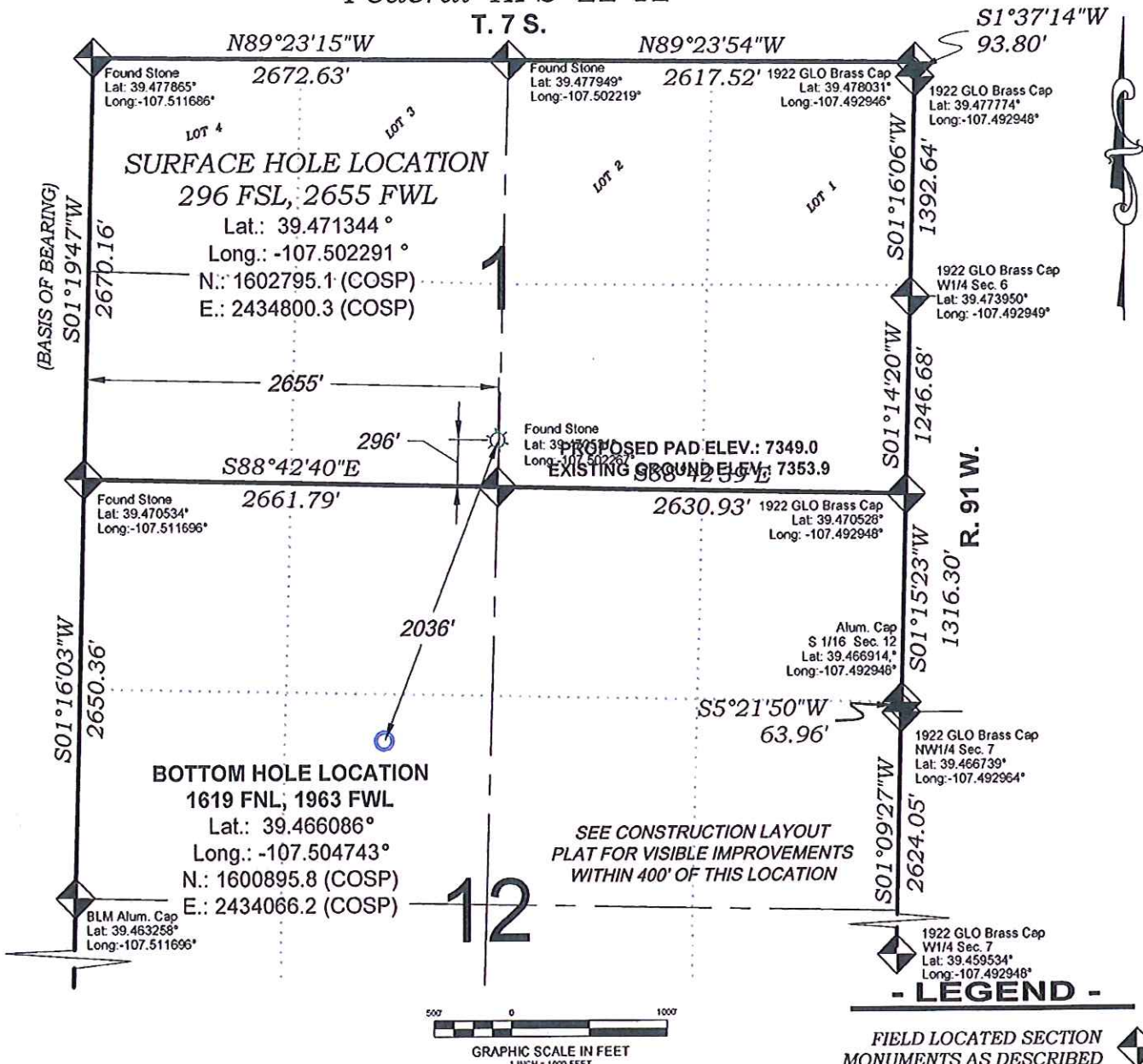


Federal KPS 22-12

T. 7 S.



SURVEYORS STATEMENT

I, MICHAEL J. LANGHORNE, A REGISTERED LAND SURVEYOR IN THE STATE OF COLORADO DO HEREBY CERTIFY THAT THE SURVEY SHOWN HEREON WAS PREPARED UNDER MY DIRECT SUPERVISION AND HAS BEEN STAKED ON THE GROUND AS SHOWN ON THE PLAT AND CHECKING THAT THIS MAP IS A TRUE REPRESENTATION THEREOF.

Michael Langhorne
 36572

MICHAEL J. LANGHORNE, COLORADO REGISTRATION NO. 36572
 FOR AND ON BEHALF OF
 BOOKCLIFF SURVEY SERVICES, INC.

REFERENCES

- 1) ORIGINAL SURVEY T. 7 S., R. 91 W., 6th P.M (GLO PLAT)
- 2) U.S.G.S. QUAD: GIBSON GULCH, CO

REVISED: 10/9/12

NOTES

- 1) ELEVATIONS BASED ON N.A.V.D. 1988 PUBLISHED COORDINATES.
- 2) LATITUDES AND LONGITUDES ARE BASE ON NAD 83, PUBLISHED COORDINATES
- 3) STATE PLANE COORDINATES ARE BASED ON COLORADO CENTRAL ZONE, U.S. SURVEY FEET.
- 4) ELEVATION MASK SET TO 15"
- 5) GPS OPERATOR J. KIRKPATRICK, OBSERVED A PDOP OF 2.7 FOR SURVEY POINT NUMBER 52266.
- 6) SURFACE AND BOTTOM HOLE LOCATIONS ARE MEASURED 90° FROM SECTION LINES.

136 East Third Street
 Rifle, Colorado
 81650 Ph. (970)
 625-2720 Fax (970)
 625-2773

BOOKCLIFF
 Survey Services, Inc.

SURVEY DATE:	9/10/12
MAP DATE:	9/12/12
SCALE:	1" = 1000'
PLAT:	1 of 1
PROJECT:	Kokopelli

WELL LOCATION PLAT Prepared for:
WPXENERGY.
 WPX Energy Rocky Mountain, LLC

SE1/4 SW1/4, SECTION 1
 T. 7 S., R. 91 W. of the 6th. P.M.
 GARFIELD COUNTY, COLORADO

K:\2010 Williams\Kokopelli\KPS 22-12_Full\KPS 22-12_Developed.dwg, 10/09/2012 11:11:53 AM