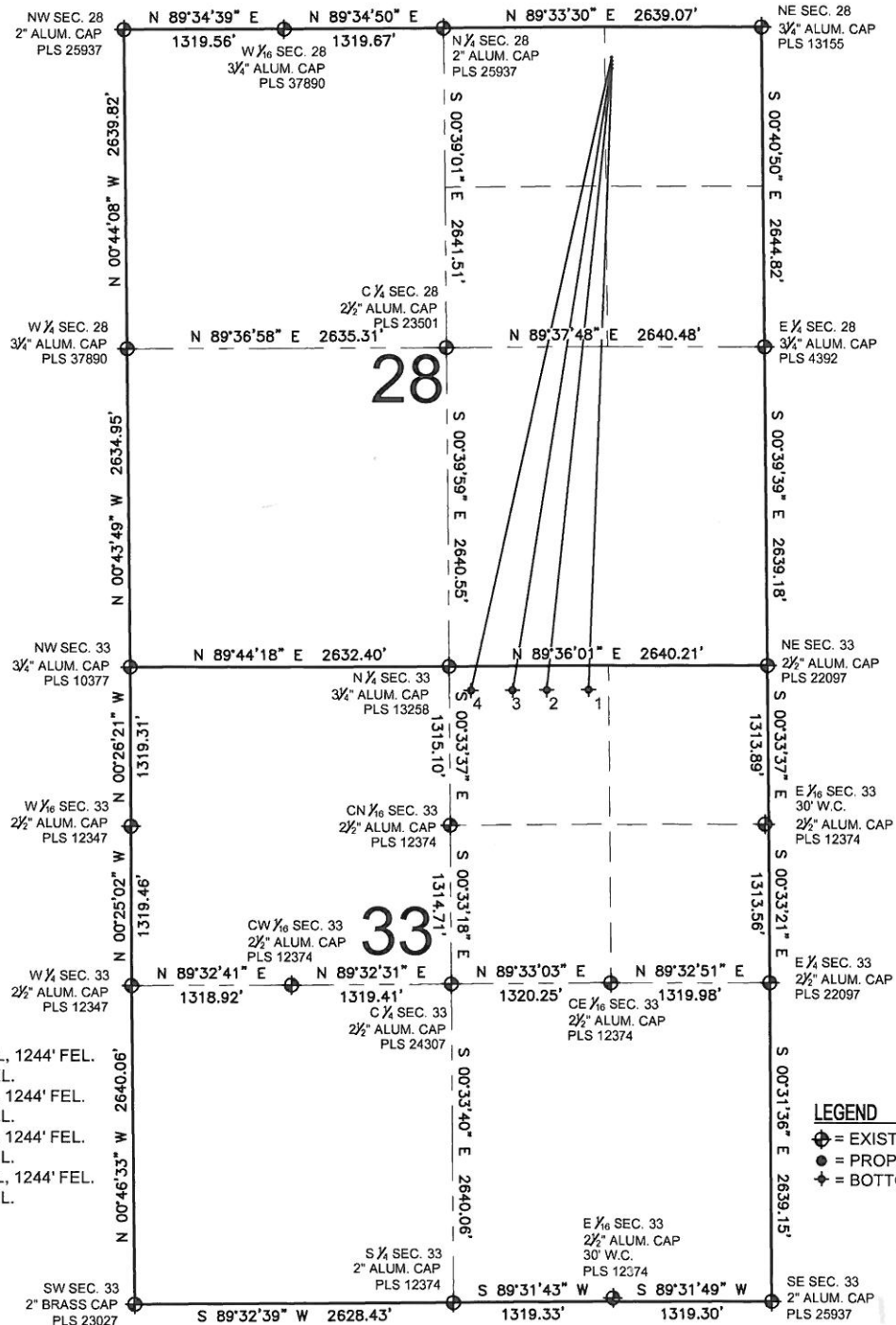


HOWARD 2N-33HZ MULTI-WELL PLAN

SECTION 28, TOWNSHIP 1 NORTH, RANGE 67 WEST, 6TH P.M.



NOTES:

1. HOWARD 27N-33HZ TO BE AT 340' FNL, 1244' FEL.
BOTTOM HOLE AT 200' FNL & 1485' FEL.
2. HOWARD 2C-33HZ TO BE AT 310' FNL, 1244' FEL.
BOTTOM HOLE AT 200' FNL & 1830' FEL.
3. HOWARD 2N-33HZ TO BE AT 280' FNL, 1244' FEL.
BOTTOM HOLE AT 200' FNL & 2114' FEL.
4. HOWARD 28C-33HZ TO BE AT 250' FNL, 1244' FEL.
BOTTOM HOLE AT 200' FNL & 2460' FEL.

LEGEND

- ◆ = EXISTING MONUMENT
- = PROPOSED WELL
- ◆ = BOTTOM HOLE

PREPARED BY:



KERR-MCGEE OIL & GAS ONSHORE LP

FIELD DATE:
07-11-12

DRAWING DATE:
11-08-12

SURFACE LOCATION:

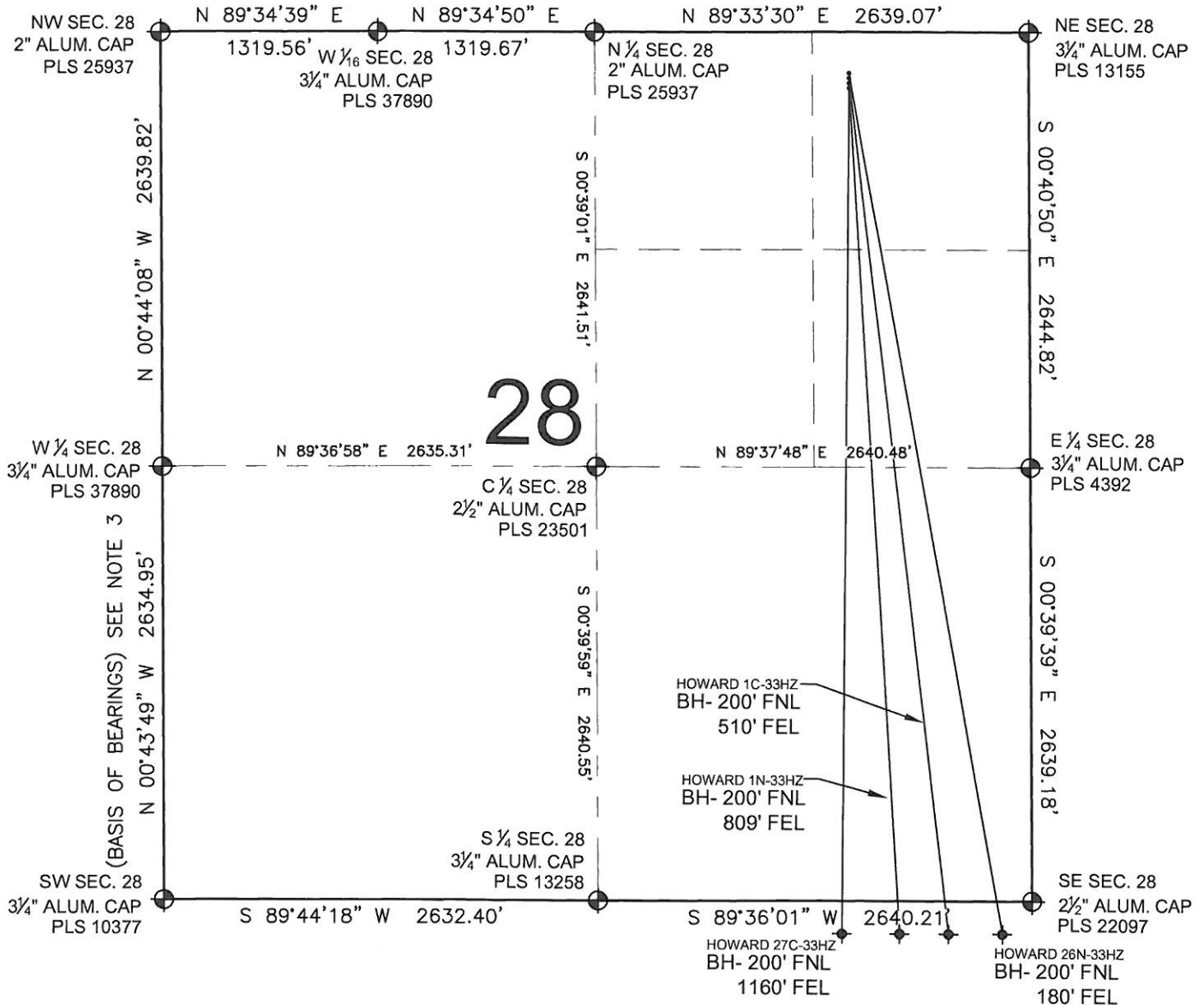
WELD COUNTY, COLORADO
NE 1/4 NE 1/4, SEC. 28, T1N, R67W, 6TH P.M.



HOWARD 1C-33HZ

MULTI-WELL PLAN

SECTION 28, TOWNSHIP 1 NORTH, RANGE 67 WEST, 6TH P.M.



LEGEND

- = EXISTING MONUMENT
- ◆ = BOTTOM HOLE
- = PROPOSED WELL
- BH = BOTTOM HOLE

NOTES:

HOWARD 27C-33HZ TO BE AT 340' FNL, 1094' FEL.
 BOTTOM HOLE AT 200' FNL & 1160' FEL.
 HOWARD 1N-33HZ TO BE AT 310' FNL, 1094' FEL.
 BOTTOM HOLE AT 200' FNL & 809' FEL.
 HOWARD 1C-33HZ TO BE AT 280' FNL, 1094' FEL.
 BOTTOM HOLE AT 200' FNL & 510' FEL.
 HOWARD 26N-33HZ TO BE AT 250' FNL, 1094' FEL.
 BOTTOM HOLE AT 200' FNL & 180' FEL.

NOTES:

1. THIS FIELD SURVEY CONFORMS TO THE MINIMUM STANDARDS SET BY THE C.O.G.C.C., RULE NO. 215
2. HORIZONTAL POSITIONS AND ORTHOMETRIC ELEVATIONS SHOWN AT THE WELL HEAD, ARE BASED ON GPS-RTK POSITIONS DERIVED FROM MINIMUM 2-HOUR STATIC OBSERVATIONS CORRECTED BY THE NATIONAL GEODETIC SURVEY ONLINE POSITIONING USER SERVICE, O.P.U.S. DATUM: HORIZONTAL = NAD83/2007, VERTICAL = NAVD88
3. THE BASIS OF BEARINGS ARE STATE PLANE COORDINATE SYSTEM GRID BEARINGS SHOWN HEREON BETWEEN THE DESCRIBED MONUMENTS SHOWN HEREON.
4. GRID DISTANCES ARE SHOWN, AS MEASURED IN THE FIELD, WITH TIES TO WELLS MEASURED PERPENDICULAR TO SECTION LINES.

PREPARED BY:



KERR-MCGEE OIL & GAS ONSHORE LP

FIELD DATE: 07-11-12	PAD NAME: HOWARD 4 PAD NENE
DRAWING DATE: 09-10-12	SURFACE LOCATION: WELD COUNTY, COLORADO
BY: SJM	CHECKED: JAH
NE 1/4 NE 1/4, SEC. 28, T1N, R67W, 6TH P.M.	

