

**KINDER MORGAN INC
17801 HIGHWAY 666
CORTEZ, Colorado**

Yellow Jacket A-7

Nabors # 405

Post Job Summary **Cement Surface Casing**

Prepared for: KENNY KORNEGIE
Date Prepared: 9/28/2012
Version: 1

Service Supervisor: Wood, Brandon

Submitted by:

HALLIBURTON

The Road to Excellence Starts with Safety

Sold To #: 320986	Ship To #: 2937844	Quote #:	Sales Order #: 9650065
Customer: KINDER MORGAN INC		Customer Rep:	
Well Name: Y A	Well #: 7	API/UWI #:	
Field: MCELMO DOME	City (SAP): PLEASANT VIEW	County/Parish: Montezuma	State: Colorado
Contractor: Nabors	Rig/Platform Name/Num: Nabors 405 AC		
Job Purpose: Cement Surface Casing			
Well Type: Producing Well		Job Type: Cement Surface Casing	
Sales Person: SNYDER, RANDALL		Srvc Supervisor: WOOD, BRANDON	MBU ID Emp #: 412753

Job Personnel

HES Emp Name	Exp Hrs	Emp #	HES Emp Name	Exp Hrs	Emp #	HES Emp Name	Exp Hrs	Emp #
CHEE, NEWMAN Lamar	17	515460	JOJOLA, LEMONT	25	418802	MESTAS, CHAD	25	516495
WOOD, BRANDON M	25	412753						

Equipment

HES Unit #	Distance-1 way	HES Unit #	Distance-1 way	HES Unit #	Distance-1 way	HES Unit #	Distance-1 way
10025031	114 mile	10025104	114 mile	10804563	114 mile	10897805	114 mile
11324578	114 mile	11583925	114 mile				

Job Hours

Date	On Location Hours	Operating Hours	Date	On Location Hours	Operating Hours	Date	On Location Hours	Operating Hours
TOTAL								

Total is the sum of each column separately

Job

Job Times

Formation Name	Formation Depth (MD)	Top	Bottom	Called Out	Date	Time	Time Zone
Form Type			BHST	On Location	12 - Jul - 2012	15:00	MST
Job depth MD	2945.3 ft		Job Depth TVD	Job Started	12 - Jul - 2012	19:30	MST
Water Depth			Wk Ht Above Floor	Job Completed	13 - Jul - 2012	08:25	MST
Perforation Depth (MD)	From		To	Job Completed	13 - Jul - 2012	19:30	MST
				Departed Loc	13 - Jul - 2012	20:30	MST

Well Data

Description	New / Used	Max pressure psig	Size in	ID in	Weight lbm/ft	Thread	Grade	Top MD ft	Bottom MD ft	Top TVD ft	Bottom TVD ft
12 1/4" Open Hole				12.25					2925.		
9 5/8" Surface Casing	Unknown		9.625	8.921	36.		K-55		2925.		

Sales/Rental/3rd Party (HES)

Description	Qty	Qty uom	Depth	Supplier
SHOE,FLT,9-5/8 8RD,2-3/4 SUPER SEAL	1	EA		
CLR,FLT,TROPHY SEAL, 9-5/8 8RD	1	EA		
AUTOFILL KIT,TROPHY SEAL	1	EA		
COLLAR-STOP-9 5/8"-FRICTION-HINGED	1	EA		
KIT,HALL WELD-A	2	EA		
PLUG,CMTG,TOP,9 5/8,HWE,8.16 MIN/9.06 MA	1	EA		

Tools and Accessories

Type	Size	Qty	Make	Depth	Type	Size	Qty	Make	Depth	Type	Size	Qty	Make
Guide Shoe					Packer					Top Plug			
Float Shoe					Bridge Plug					Bottom Plug			
Float Collar					Retainer					SSR plug set			
Insert Float										Plug Container			
Stage Tool										Centralizers			

Miscellaneous Materials										
Gelling Agt	Conc	Surfactant	Conc	Acid Type	Qty	Conc	%			
Treatment Fld	Conc	Inhibitor	Conc	Sand Type	Size	Qty	%			
Fluid Data										
Stage/Plug #: 1										
Fluid #	Stage Type	Fluid Name	Qty	Qty uom	Mixing Density lbm/gal	Yield ft ³ /sk	Mix Fluid Gal/sk	Rate bbl/min	Total Mix Fluid Gal/sk	
1	Fresh Water Spacer		10.00	bbl	8.33	.0	.0	4.0		
2	CHEMICAL WASH	CHEMICAL WASH - SBM (21914)	20.00	bbl	8.4	.0	.0	4.0		
3	Fresh Water Spacer		10.00	bbl	8.33	.0	.0	4.0		
4	Lead Cement	HALCEM (TM) SYSTEM (452986)	800.0	sacks	12.4	1.9	9.68	4.0	9.68	
	0.1 %	HALAD(R)-9, 50 LB (100001617)								
	0.125 lbm	POLY-E-FLAKE (101216940)								
	5 lbm	KOL-SEAL, BULK (100064233)								
	9.677 Gal	FRESH WATER								
5	Tail Cement	HALCEM (TM) SYSTEM (452986)	300.0	sacks	15.6	1.18	5.2	4.0	5.2	
	0.1 %	HALAD(R)-9, 50 LB (100001617)								
	0.125 lbm	POLY-E-FLAKE (101216940)								
	5.198 Gal	FRESH WATER								
6	Displacement		224.40	bbl	8.33	.0	.0	4.0		
7	Top Out Cement	HALCEM (TM) SYSTEM (452986)	66.0	sacks	15.8	1.17	5.02	1.0	5.02	
	2 %	CALCIUM CHLORIDE - HI TEST PELLET (100005053)								
	5.019 Gal	FRESH WATER								
Calculated Values			Pressures			Volumes				
Displacement	224.4	Shut In: Instant		Lost Returns	No	Cement Slurry		Pad		
Top Of Cement	SURFACE	5 Min		Cement Returns	60	Actual Displacement	226	Treatment		
Frac Gradient		15 Min		Spacers	40	Load and Breakdown		Total Job		
Rates										
Circulating		Mixing		Displacement		Avg. Job				
Cement Left In Pipe	Amount	42.86 ft	Reason	Shoe Joint						
Frac Ring # 1 @	ID	Frac ring # 2 @	ID	Frac Ring # 3 @	ID	Frac Ring # 4 @	ID			
The Information Stated Herein Is Correct				Customer Representative Signature						

The Road to Excellence Starts with Safety

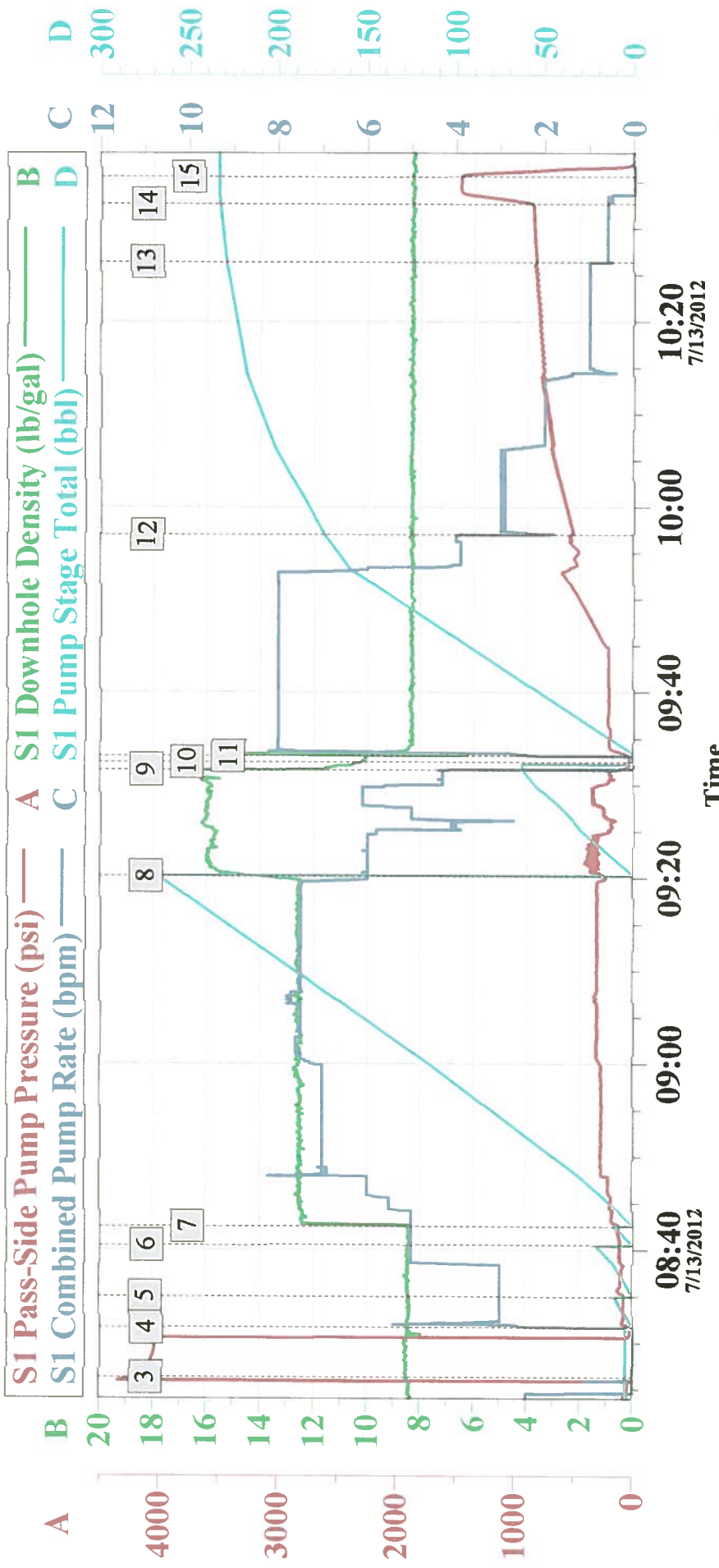
Sold To #: 320986	Ship To #: 2937844	Quote #:	Sales Order #: 9650065
Customer: KINDER MORGAN INC		Customer Rep:	
Well Name: Y A	Well #: 7	API/UWI #:	
Field: MCELMO DOME	City (SAP): PLEASANT VIEW	County/Parish: Montezuma	State: Colorado
Legal Description:			
Lat:		Long:	
Contractor: Nabors		Rig/Platform Name/Num: Nabors 405 AC	
Job Purpose: Cement Surface Casing			Ticket Amount:
Well Type: Producing Well		Job Type: Cement Surface Casing	
Sales Person: SNYDER, RANDALL		Srv Supervisor: WOOD, BRANDON	
MBU ID Emp #: 412753			

Activity Description	Date/Time	Cht #	Rate bbl/min	Volume bbl		Pressure psig		Comments
				Stage	Total	Tubing	Casing	
Call Out	07/12/2012 15:00							
Depart Yard Safety Meeting	07/12/2012 16:55							SAFETY MEETING INVOLVING THE CMT CREW
Crew Leave Yard	07/12/2012 17:00							
Arrive At Loc	07/12/2012 19:30							1- F-450 11583925, 1- RED TIGER PUMP TRUCK 11223557, 1- 660 BULK TRUCK TRAILERS 10025031, 10025104
Assessment Of Location Safety Meeting	07/12/2012 19:35							ASSESSMENT OF LOCATION INVOLVING THE CMT CREW
Pre-Rig Up Safety Meeting	07/13/2012 05:25							SAFETY MEETING INVOLVING THE ENTIRE CMT/ RIG CREW
Rig-Up Equipment	07/13/2012 05:30							
Pre-Job Safety Meeting	07/13/2012 06:25							SAFETY MEETING INVOLVING EVERYONE ON LOCATION
Start Job	07/13/2012 08:25							TD 2940 FT, TP 2945.27 FT, FC 2902.41 FT, SJ 42.86 FT, 9 5/8 36 # J-55 CSG, 12 1/4 OH
Test Lines	07/13/2012 08:26		1		4		4000.0	PRESSURE TEST GOOD TO 4000 PSI
Pump Spacer	07/13/2012 08:31		2		10		79.0	PUMP 10 BBL FRESH WATER SPACER

Activity Description	Date/Time	Cht #	Rate bbl/min	Volume bbl		Pressure psig		Comments
				Stage	Total	Tubing	Casing	
Pump Spacer 1	07/13/2012 08:34		2		20		104.0	PUMP 20 BBLS CHEMWASH
Pump Spacer 2	07/13/2012 08:40		5		10		109.0	PUMP 10 BBL FRESH WATER SPACER
Pump Lead Cement	07/13/2012 08:42		7.5		270.7		185.0	800 SKS, 1.9 YLD, 9.68 GAL H2O/SK, 270.7 BBLS @ 12.4 #, 184.4 BBLS H2O REQ
Pump Tail Cement	07/13/2012 09:20		5		63		345.0	300 SKS, 1.18 YLD, 5.2 GAL H2O/SK, 63 BBLS @ 15.6 #, 37.1 BBLS H2O REQ
Shutdown	07/13/2012 09:31							SHUT DOWN TO DROP TOP PLUG
Drop Top Plug	07/13/2012 09:32							TATTLE TAIL INDICATED PLUG LEFT THE PLUG CONTAINER
Pump Displacement	07/13/2012 09:33		8		224.4		205.0	CALCULATED 224.4 BBLS DISPLACEMENT, ACTUALLY PUMPED 226 BBLS ON TANK'S MARK TO MARK TO BUMP PLUG
Cement Returns to Surface	07/13/2012 09:57				60		525.0	CALCULATED SHOULD CIRCULATE 167.3 BBLS CEMENT RETURNS TO SURFACE, ACTUALLY CIRCULATED 60 BBLS
Slow Rate	07/13/2012 10:26		0.5				818.0	SLOW RATE .5 BPM TO LAND THE PLUG
Bump Plug	07/13/2012 10:32						855.0	CALCULATED 781 PSI DIFFERENTIAL WHEN PLUG LANDS, PLUG BUMPED @ 855 PSI
Check Floats	07/13/2012 10:35						1463.0	PRESSURED UP TO 1463 PSI, RELEASED PRESSURE FLOATS HELD, FLOWED BACK 1.5 BBLS
Pump Cap Cement	07/13/2012 19:13		1.5		13.8		123.0	66 SKS, 1.17 YLD, 5.02 GAL H2O/SK, 13.8 BBLS @ 15.8 #, 7.9 BBLS H2O REQ
Shutdown	07/13/2012 19:25							SHUTDOWN GOOD CEMENT TO SURFACE

Activity Description	Date/Time	Cht #	Rate bbl/ min	Volume bbl		Pressure psig		Comments
				Stage	Total	Tubing	Casing	
End Job	07/13/2012 19:30							GOOD CIRCULATION THROUGHOUT THE ENTIRE CMT JOB, NO PIPE MOVEMENT,
Pre-Rig Down Safety Meeting	07/13/2012 19:35							SAFETY MEETING INVOLVING THE CMT/RIG CREW
Rig-Down Equipment	07/13/2012 19:40							
Safety Meeting - Departing Location	07/13/2012 20:25							SAFETY MEETING INVOLVING THE CMT CREW
Depart Location for Service Center or Other Site	07/13/2012 20:30							THANK YOU FOR USING HALLIBURTON, BRANDON WOOD AND CREW

KINDER MORGAN YELLOWJACKET A # 7, SURFACE

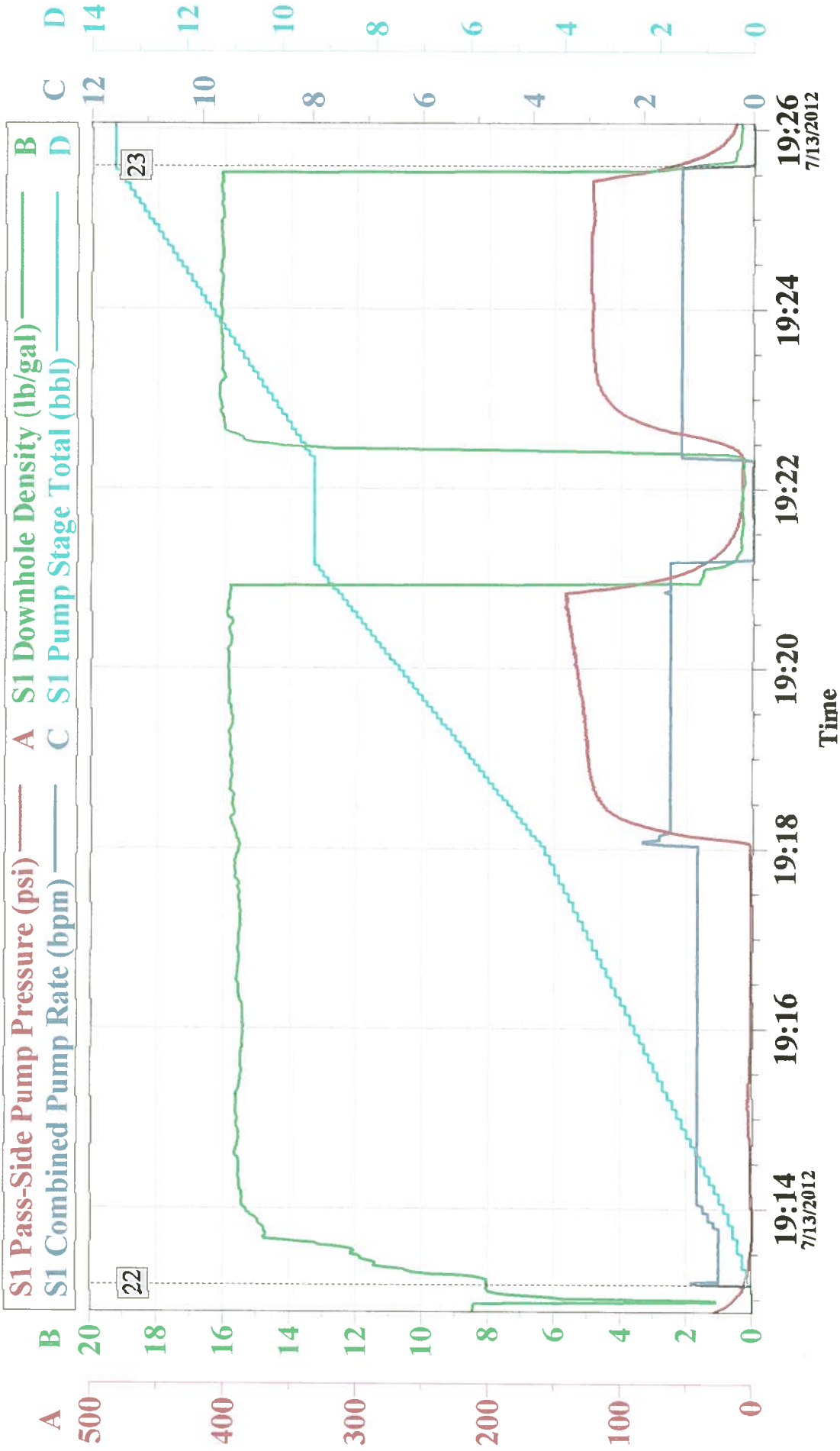


Global Event Log

3	Test Lines	08:26:17	4	Pump Spacer	08:31:34	5	Pump Spacer 1	08:34:55
6	Pump Spacer 2	08:40:26	7	Pump Lead Cement	08:42:29	8	Pump Tail Cement	09:20:15
9	Shutdown	09:31:40	10	Drop Top Plug	09:32:30	11	Pump Displacement	09:33:09
12	Cement to Surface	09:57:00	13	Slow Rate	10:26:25	14	Bump Plug	10:32:40
15	Check Floats	10:35:37						

Customer:	KINDER MORGAN	Job Date:	13-Jul-2012	Sales Order #:	9650065
Well Description:	YELLOWJACKET A # 7	Job type:	SURFACE	ADC Used:	YES
Customer Rep:	KENNY KORNEGIE	Service Supervisor:	BRANDON WOOD	Operator/ Pump:	LEMONT JOJOLA, 11324578

KINDER MORGAN YELLOWJACKET A # 7, TOP OUT



Global Event Log

22 Pump Top Out Cement 19:13:09
 23 Shutdown 19:25:36

Customer:	KINDER MORGAN	Job Date:	13-Jul-2012
Well Description:	YELLOWJACKET A # 7	Job type:	TOP OUT
Customer Rep:	KENNY KORNEGIE	Service Supervisor:	BRANDON WOOD
		Sales Order #:	9650065
		ADC Used:	NO
		Operator/ Pump:	LEMONT JOJOLA, 11324578

Sales Order #: 9650065	Line Item: 10	Survey Conducted Date: 7/13/2012
Customer: KINDER MORGAN INC		Job Type (BOM): CMT SURFACE CASING BOM
Customer Representative: KENNY KORNEGIE		API / UWI: (leave blank if unknown) AFEYK3AYS4JVPRB1AAA
Well Name: Y A		Well Number: 7
Well Type: Producing Well	Well Country: United States of America	
H2S Present:	Well State: Colorado	Well County: Montezuma

Dear Customer,

We hope that you were satisfied with the service quality of this job performed by Halliburton. It is the aim of our management and service personnel to deliver equipment and service of a standard unmatched in the service sector of the energy industry.

Please take the time to let us know if our performance met with your satisfaction. Please be as critical as possible to ensure we constantly improve our service. Your comments are of great value to us and are intended for the exclusive use of Halliburton.

CUSTOMER SATISFACTION SURVEY

CATEGORY	CUSTOMER SATISFACTION RESPONSE	
Survey Conducted Date	The date the survey was conducted	7/13/2012
Survey Interviewer	The survey interviewer is the person who initiated the survey.	BRANDON WOOD (HX34286)
Customer Participation	Did the customer participate in this survey? (Y/N)	Yes
Customer Representative	Enter the Customer representative name	KENNY KORNEGIE
HSE	Was our HSE performance satisfactory? Circle Y or N	Yes
Equipment	Were you satisfied with our Equipment? Circle Y or N	Yes
Personnel	Were you satisfied with our people? Circle Y or N	Yes
Customer Comment	Customer's Comment	
CUSTOMER SIGNATURE		