



**Scale 1:240 (5"=100') Imperial
Measured Depth Log**

Well Name: McElmo Dome, Yellow Jacket A-7 (YA-7)
Location: SHL: 2389 FSL & 2569 FWL, Sec. 15, T40N, R18W NMPM
License Number: API 50830670100
Spud Date: 07/07/2012
Surface Coordinates: SHL: 615 FSL & 2468 FWL, Sec. 13, T37N, R18W NMPM
Region: Colorado
Drilling Completed: 08/10/2012

Bottom Hole Coordinates:

Ground Elevation (ft): 6692' **K.B. Elevation (ft):** 6717.5'
Logged Interval (ft): 5000' **To:** 8141' **Total Depth (ft):** 8141'
Formation: Leadville Limestone Carbonate
Type of Drilling Fluid: FRESH WATER

Printed by MUD.LOG from WellSight Systems 1-800-447-1534 www.WellSight.com

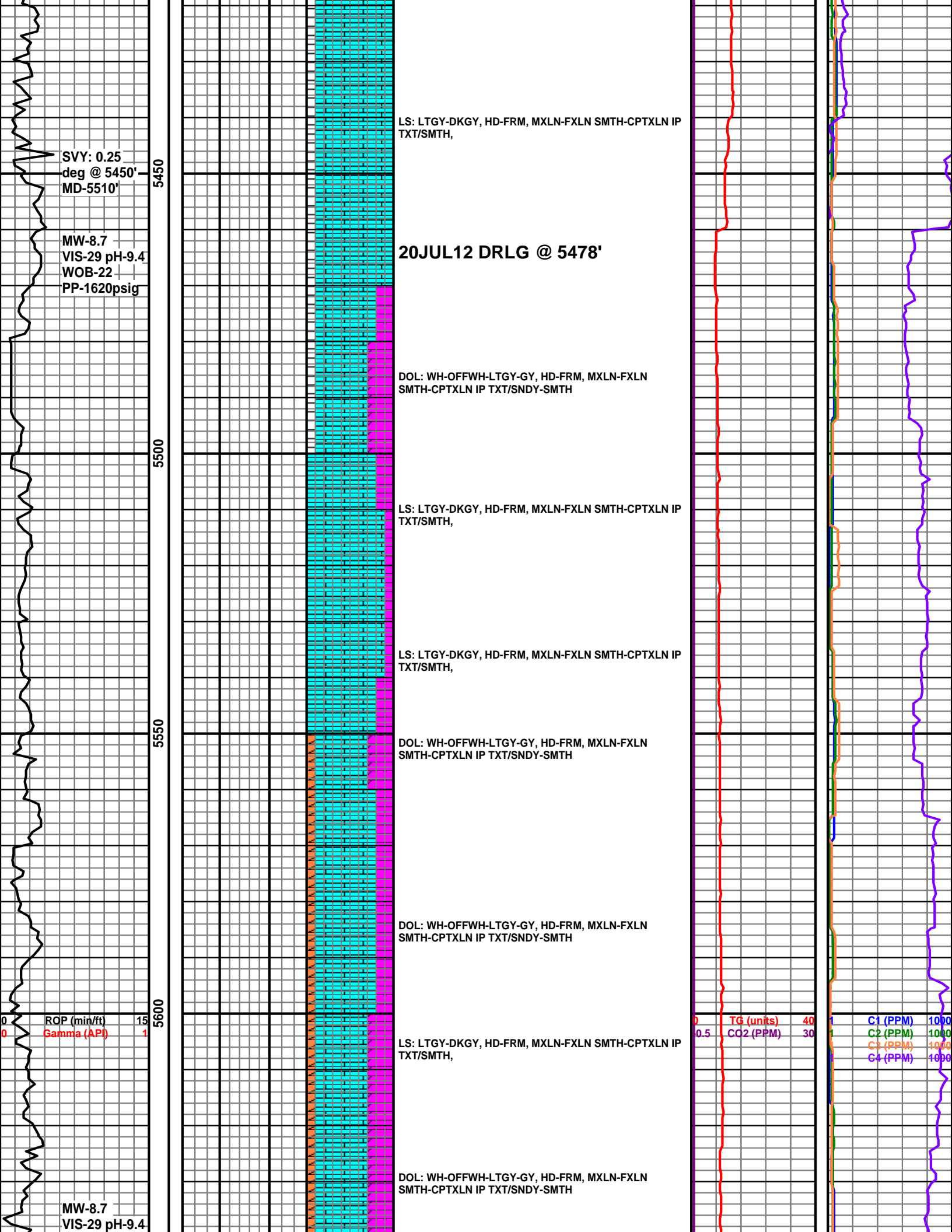
OPERATOR

Company: KINDER MORGAN CO2 CO LP
Address:

GEOLOGIST

Name: Leon Walters
Company: ABOVE ENTERPRISE
Address: 510 Old Lubbock Hwy
Snyder Tx 79549

Cores



SVY: 0.25
deg @ 5450'
MD-5510'

MW-8.7
VIS-29 pH-9.4
WOB-22
PP-1620psig

LS: LTGY-DKGY, HD-FRM, MXLN-FXLN SMTH-CPTXLN IP
TXT/SMTH,

20JUL12 DRLG @ 5478'

DOL: WH-OFFFWH-LTGY-GY, HD-FRM, MXLN-FXLN
SMTH-CPTXLN IP TXT/SNDY-SMTH

LS: LTGY-DKGY, HD-FRM, MXLN-FXLN SMTH-CPTXLN IP
TXT/SMTH,

LS: LTGY-DKGY, HD-FRM, MXLN-FXLN SMTH-CPTXLN IP
TXT/SMTH,

DOL: WH-OFFFWH-LTGY-GY, HD-FRM, MXLN-FXLN
SMTH-CPTXLN IP TXT/SNDY-SMTH

DOL: WH-OFFFWH-LTGY-GY, HD-FRM, MXLN-FXLN
SMTH-CPTXLN IP TXT/SNDY-SMTH

LS: LTGY-DKGY, HD-FRM, MXLN-FXLN SMTH-CPTXLN IP
TXT/SMTH,

DOL: WH-OFFFWH-LTGY-GY, HD-FRM, MXLN-FXLN
SMTH-CPTXLN IP TXT/SNDY-SMTH

ROP (min/ft) 15
Gamma (API) 1

TG (units) 40
CO2 (PPM) 30

C1 (PPM) 1000
C2 (PPM) 1000
C3 (PPM) 1000
C4 (PPM) 1000

MW-8.7
VIS-29 pH-9.4

WOB-22
PP-1620psig

5650

LS: LTGY-DKGY, HD-FRM, MXLN-FXLN SMTH-CPTXLN IP
TXT/SMTH,

SS: CLR-OFFWH IP, FRIA-UNCONS, MOD HD IP, VFN-FN
GRN, SBRND-SBANG,

LS: GY-DKGY-BLK, HD-FRM, MXLN-FXLN GRNY-CPTXLN I
TXT/SNDY,

LS: GY-DKGY-BLK, HD-FRM, MXLN-FXLN GRNY-CPTXLN I
TXT/SNDY,

LS: GY-DKGY-BLK, HD-FRM, MXLN-FXLN GRNY-CPTXLN I
TXT/SNDY,

LS: GY-DKGY-BLK, HD-FRM, MXLN-FXLN GRNY-CPTXLN I
TXT/SNDY,

5700

5750

MW-8.65
VIS-28 pH-9.4
WOB-20
SPM-130
PP-1595psig

**21JUL12 TOH @ 5793' CHNG
BHA, TRIP CK BHA**

LS: OFFWH-GY-DKGY-BLK, HD-FRM, MXLN-FXLN
GRNY-CPTXLN IP TXT/SNDY,

0 TB (units) 40
0.5 CO2 (PPM) 30

O1 (PPM) 1000
C2 (PPM) 1000
C3 (PPM) 1000
C4 (PPM) 1000

5800

SH: BRN-RDBRN-DKGY-BLK, SFT-MDHD, BLKY-SBLKY, SL
FISS IP, SLTY, DULL MOD CALC ASSOC: PYR

22JUL12 DRLG @ 5838'

SH: BRN-RDBRN-DKGY-BLK, SFT-MDHD, BLKY-SBLKY, SL
FISS IP, SLTY, DULL MOD CALC ASSOC: PYR

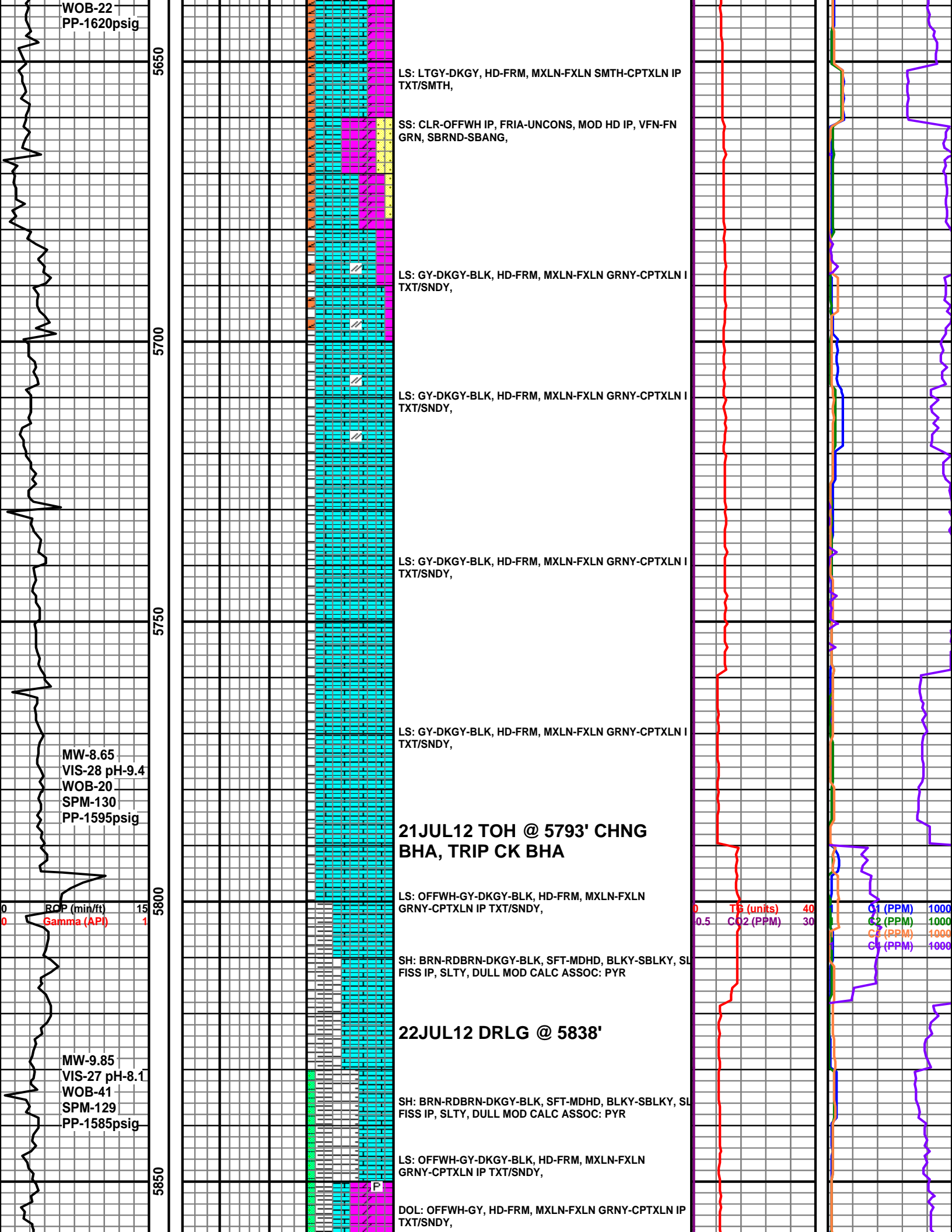
LS: OFFWH-GY-DKGY-BLK, HD-FRM, MXLN-FXLN
GRNY-CPTXLN IP TXT/SNDY,

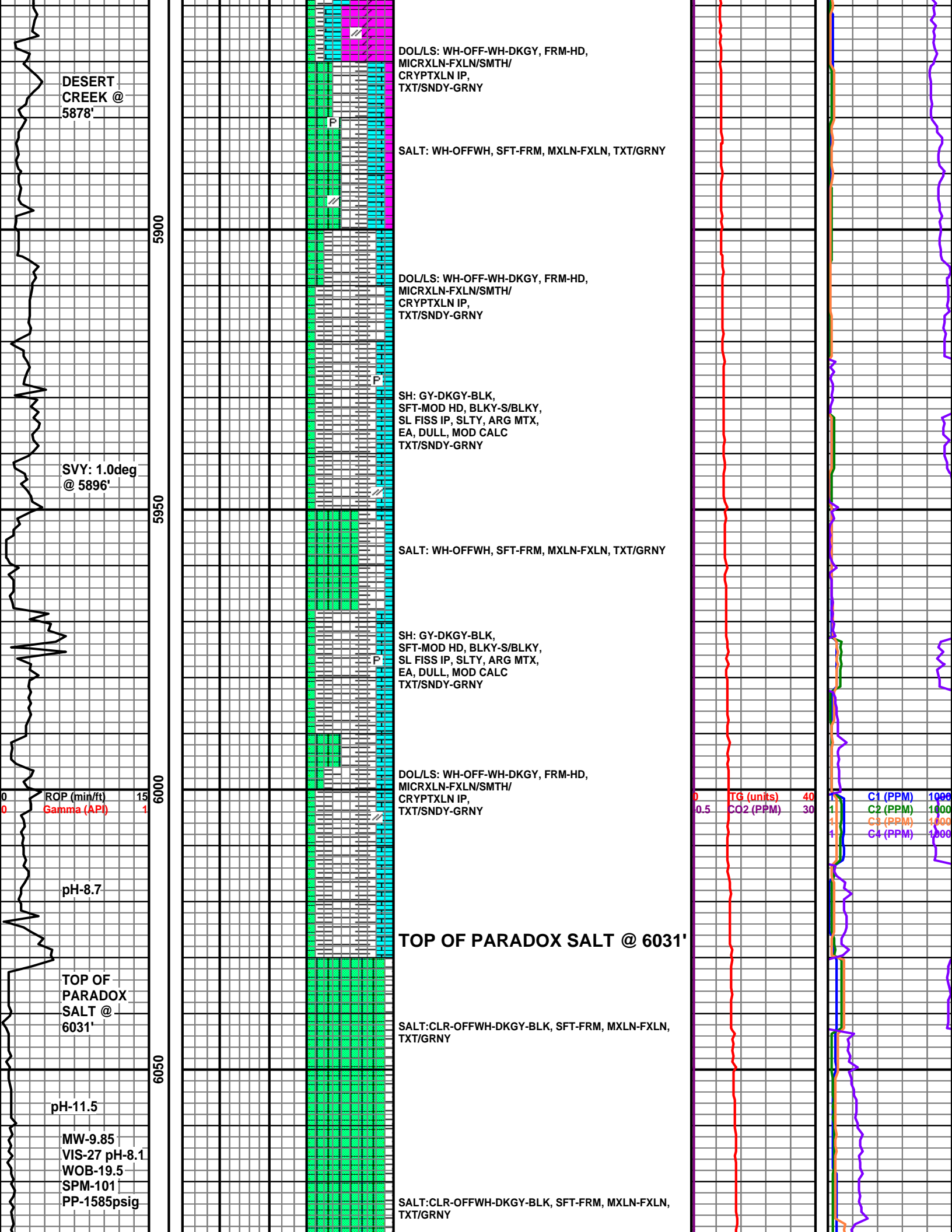
DOL: OFFWH-GY, HD-FRM, MXLN-FXLN GRNY-CPTXLN IP
TXT/SNDY,

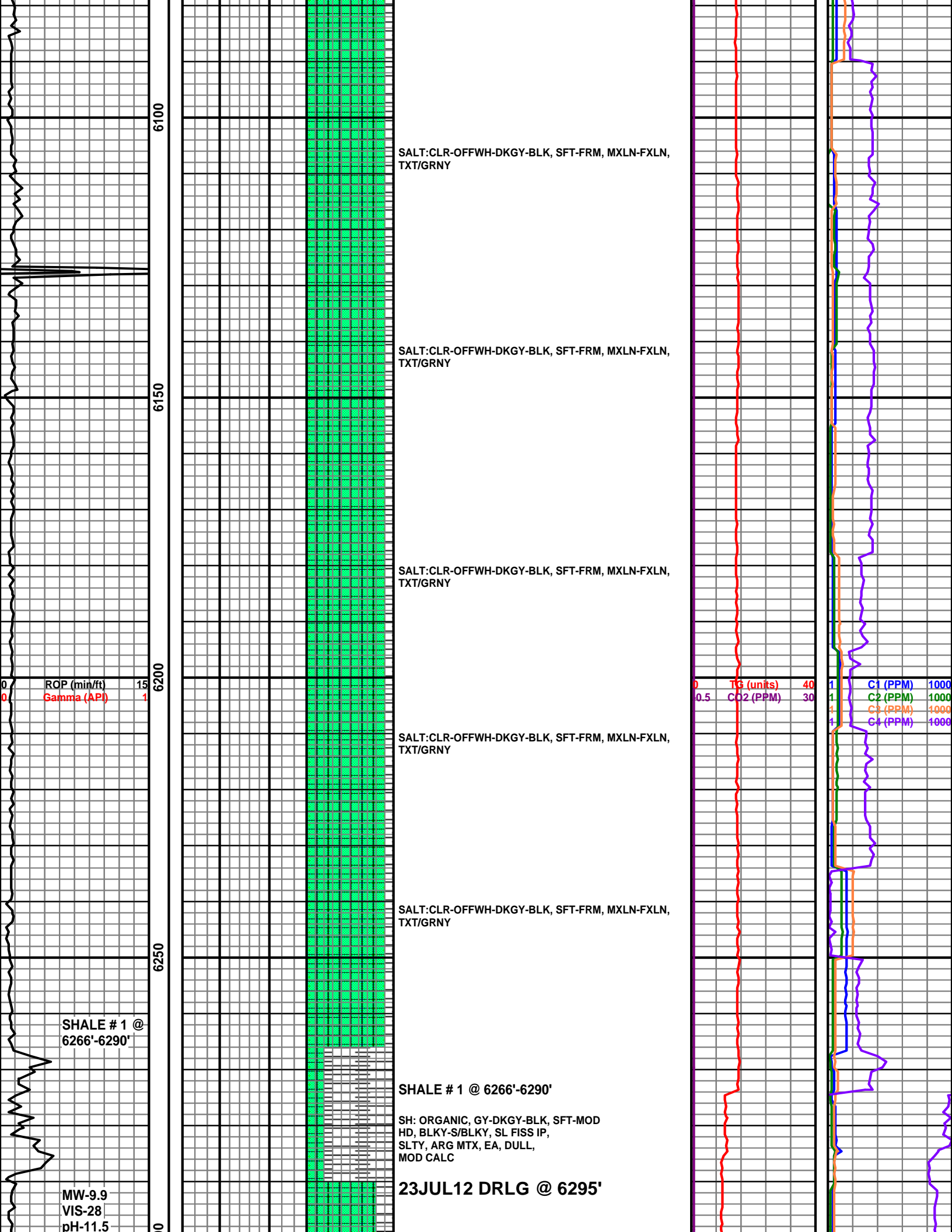
5850

RCP (min/ft) 15
Gamma (API) 1

MW-9.85
VIS-27 pH-8.1
WOB-41
SPM-129
PP-1585psig







6100

SALT: CLR-OFFWH-DKGY-BLK, SFT-FRM, MXLN-FXLN, TXT/GRNY

6150

SALT: CLR-OFFWH-DKGY-BLK, SFT-FRM, MXLN-FXLN, TXT/GRNY

6200

SALT: CLR-OFFWH-DKGY-BLK, SFT-FRM, MXLN-FXLN, TXT/GRNY

SALT: CLR-OFFWH-DKGY-BLK, SFT-FRM, MXLN-FXLN, TXT/GRNY

6250

SALT: CLR-OFFWH-DKGY-BLK, SFT-FRM, MXLN-FXLN, TXT/GRNY

SHALE # 1 @
6266'-6290'

SHALE # 1 @ 6266'-6290'

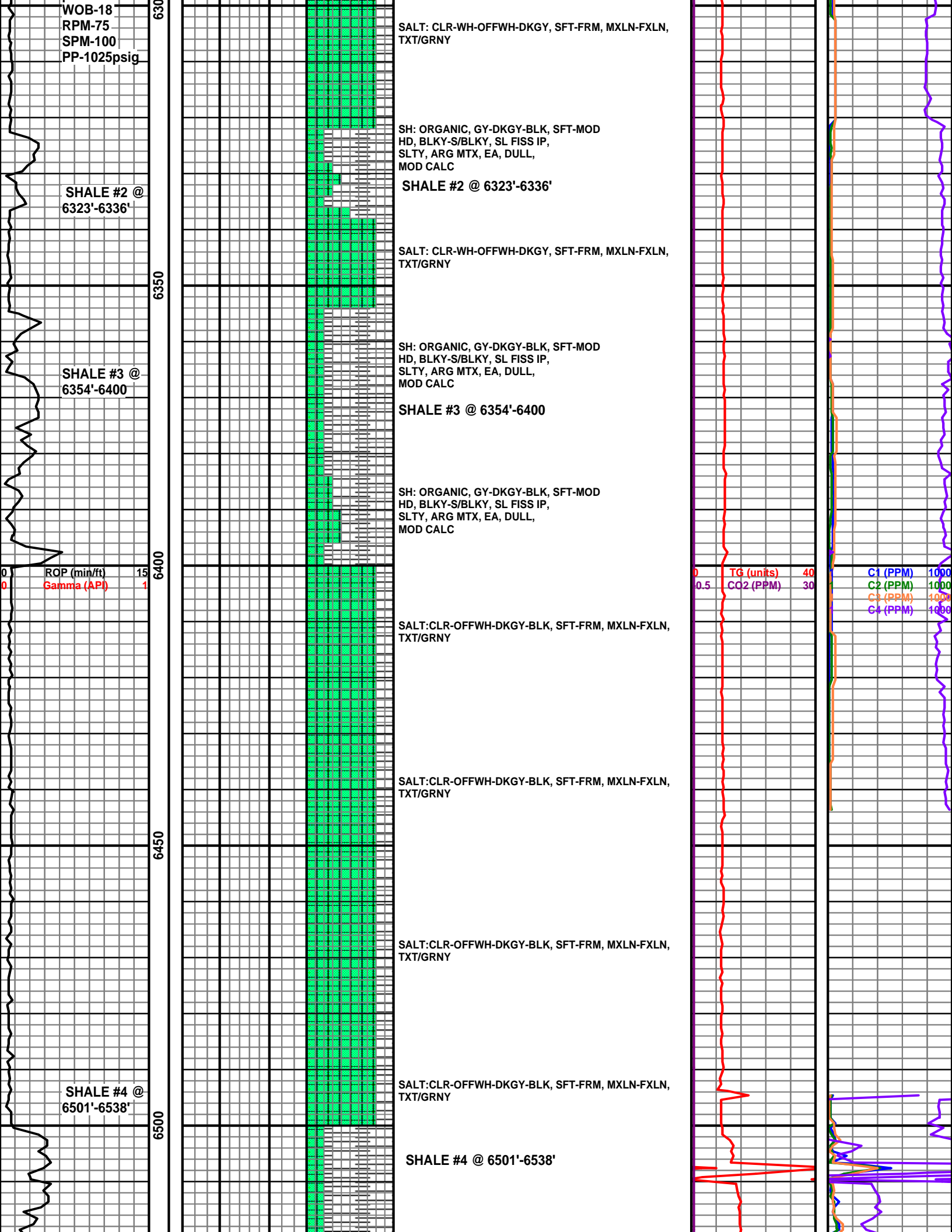
SH: ORGANIC, GY-DKGY-BLK, SFT-MOD
HD, BLKY-S/BLKY, SL FISS IP,
SLTY, ARG MTX, EA, DULL,
MOD CALC

23JUL12 DRLG @ 6295'

MW-9.9
VIS-28
pH-11.5

TG (units) 40
CO2 (PPM) 30

C1 (PPM) 1000
C2 (PPM) 1000
C3 (PPM) 1000
C4 (PPM) 1000



WOB-18
RPM-75
SPM-100
PP-1025psig

SHALE #2 @
6323'-6336'

SHALE #3 @
6354'-6400'

ROP (min/ft) 15
Gamma (API) 1

SHALE #4 @
6501'-6538'

SALT: CLR-WH-OFFFWH-DKGY, SFT-FRM, MXLN-FXLN,
TXT/GRNY

SH: ORGANIC, GY-DKGY-BLK, SFT-MOD
HD, BLKY-S/BLKY, SL FISS IP,
SLTY, ARG MTX, EA, DULL,
MOD CALC

SHALE #2 @ 6323'-6336'

SALT: CLR-WH-OFFFWH-DKGY, SFT-FRM, MXLN-FXLN,
TXT/GRNY

SH: ORGANIC, GY-DKGY-BLK, SFT-MOD
HD, BLKY-S/BLKY, SL FISS IP,
SLTY, ARG MTX, EA, DULL,
MOD CALC

SHALE #3 @ 6354'-6400'

SH: ORGANIC, GY-DKGY-BLK, SFT-MOD
HD, BLKY-S/BLKY, SL FISS IP,
SLTY, ARG MTX, EA, DULL,
MOD CALC

SALT: CLR-OFFFWH-DKGY-BLK, SFT-FRM, MXLN-FXLN,
TXT/GRNY

SALT: CLR-OFFFWH-DKGY-BLK, SFT-FRM, MXLN-FXLN,
TXT/GRNY

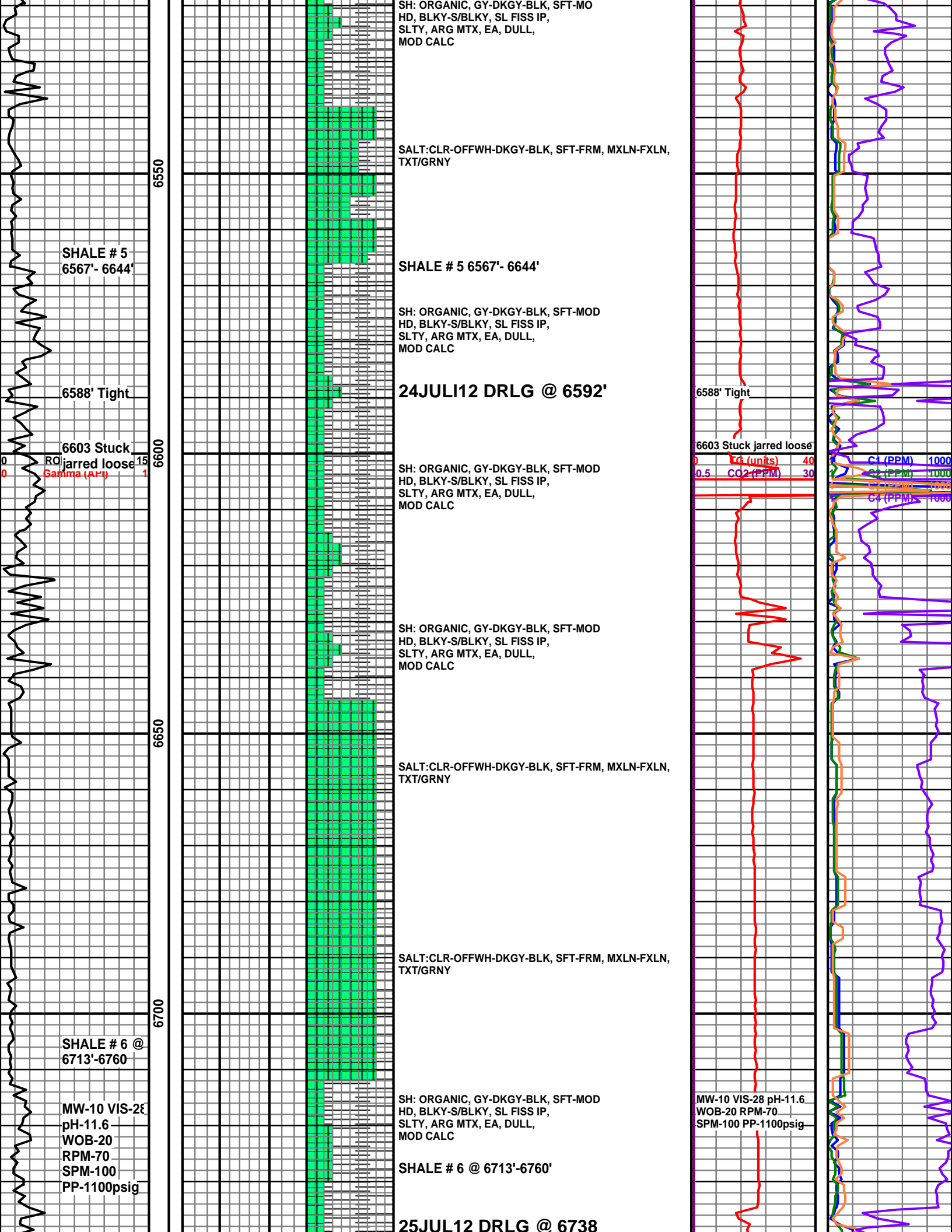
SALT: CLR-OFFFWH-DKGY-BLK, SFT-FRM, MXLN-FXLN,
TXT/GRNY

SALT: CLR-OFFFWH-DKGY-BLK, SFT-FRM, MXLN-FXLN,
TXT/GRNY

SHALE #4 @ 6501'-6538'

TG (units) 40
CO2 (PPM) 30

C1 (PPM) 1000
C2 (PPM) 1000
C3 (PPM) 1000
C4 (PPM) 1000



SH: ORGANIC, GY-DKGY-BLK, SFT-MO
 HD, BLKY-S/BLKY, SL FISS IP,
 SLTY, ARG MTX, EA, DULL,
 MOD CALC

SALT:CLR-OFFWH-DKGY-BLK, SFT-FRM, MXLN-FXLN,
 TXT/GRNY

SHALE # 5
 6567'- 6644'

SHALE # 5 6567'- 6644'

SH: ORGANIC, GY-DKGY-BLK, SFT-MOD
 HD, BLKY-S/BLKY, SL FISS IP,
 SLTY, ARG MTX, EA, DULL,
 MOD CALC

6588' Tight

24JUL12 DRLG @ 6592'

6588' Tight

6603 Stuck
 jarred loose

SH: ORGANIC, GY-DKGY-BLK, SFT-MOD
 HD, BLKY-S/BLKY, SL FISS IP,
 SLTY, ARG MTX, EA, DULL,
 MOD CALC

6603 Stuck jarred loose

Gamma (API) 40
 CO2 (PPM) 30
 C1 (PPM) 1000
 C2 (PPM) 1000
 C3 (PPM) 1000

SH: ORGANIC, GY-DKGY-BLK, SFT-MOD
 HD, BLKY-S/BLKY, SL FISS IP,
 SLTY, ARG MTX, EA, DULL,
 MOD CALC

SALT:CLR-OFFWH-DKGY-BLK, SFT-FRM, MXLN-FXLN,
 TXT/GRNY

SALT:CLR-OFFWH-DKGY-BLK, SFT-FRM, MXLN-FXLN,
 TXT/GRNY

SHALE # 6 @
 6713'-6760

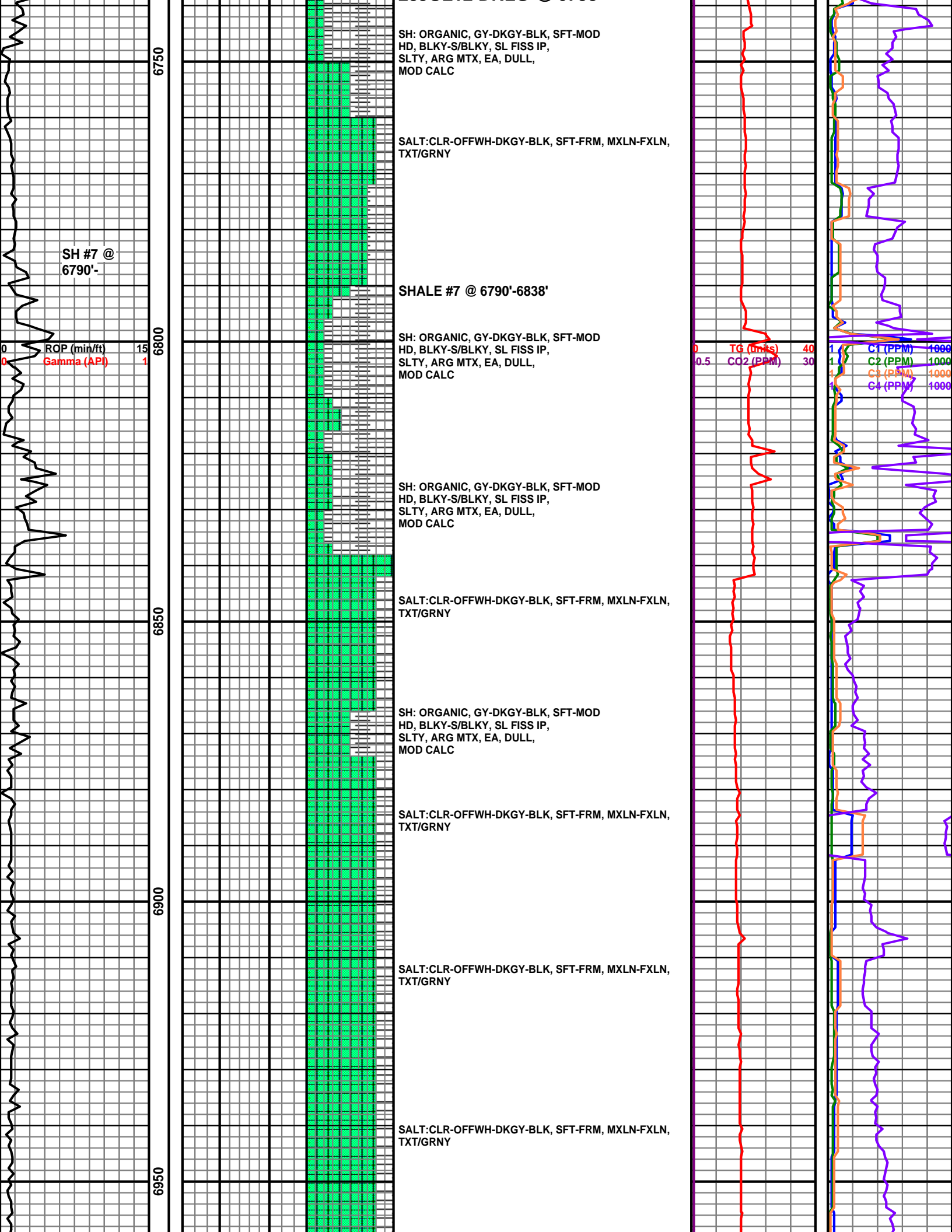
SH: ORGANIC, GY-DKGY-BLK, SFT-MOD
 HD, BLKY-S/BLKY, SL FISS IP,
 SLTY, ARG MTX, EA, DULL,
 MOD CALC

MW-10 VIS-28 pH-11.6
 WOB-20 RPM-70
 SPM-100 PP-1100psig

MW-10 VIS-28
 pH-11.6
 WOB-20
 RPM-70
 SPM-100
 PP-1100psig

SHALE # 6 @ 6713'-6760'

25JUL12 DRLG @ 6738



6750
6800
6850
6900
6950

SH: ORGANIC, GY-DKGY-BLK, SFT-MOD
HD, BLKY-S/BLKY, SL FISS IP,
SLTY, ARG MTX, EA, DULL,
MOD CALC

SALT:CLR-OFFWH-DKGY-BLK, SFT-FRM, MXLN-FXLN,
TXT/GRNY

SHALE #7 @ 6790'-6838'

SH: ORGANIC, GY-DKGY-BLK, SFT-MOD
HD, BLKY-S/BLKY, SL FISS IP,
SLTY, ARG MTX, EA, DULL,
MOD CALC

SH: ORGANIC, GY-DKGY-BLK, SFT-MOD
HD, BLKY-S/BLKY, SL FISS IP,
SLTY, ARG MTX, EA, DULL,
MOD CALC

SALT:CLR-OFFWH-DKGY-BLK, SFT-FRM, MXLN-FXLN,
TXT/GRNY

SH: ORGANIC, GY-DKGY-BLK, SFT-MOD
HD, BLKY-S/BLKY, SL FISS IP,
SLTY, ARG MTX, EA, DULL,
MOD CALC

SALT:CLR-OFFWH-DKGY-BLK, SFT-FRM, MXLN-FXLN,
TXT/GRNY

SALT:CLR-OFFWH-DKGY-BLK, SFT-FRM, MXLN-FXLN,
TXT/GRNY

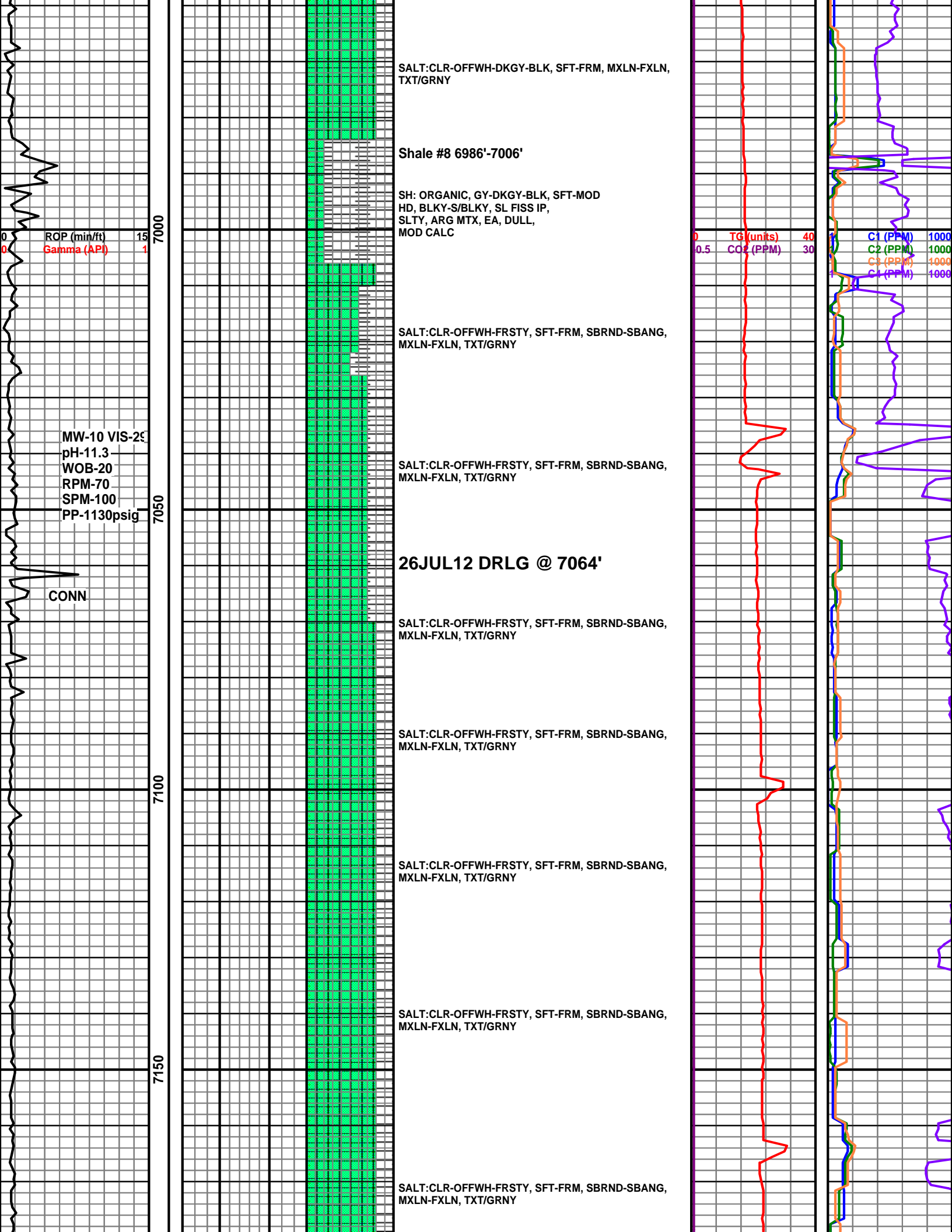
SALT:CLR-OFFWH-DKGY-BLK, SFT-FRM, MXLN-FXLN,
TXT/GRNY

SH #7 @
6790'-

ROP (min/ft) 15
Gamma (API) 1

TG (mils) 40
CO2 (PPM) 30

C1 (PPM) 1000
C2 (PPM) 1000
C3 (PPM) 1000
C4 (PPM) 1000



SALT:CLR-OFFWH-DKGY-BLK, SFT-FRM, MXLN-FXLN, TXT/GRNY

Shale #8 6986'-7006'

SH: ORGANIC, GY-DKGY-BLK, SFT-MOD HD, BLKY-S/BLKY, SL FISS IP, SLTY, ARG MTX, EA, DULL, MOD CALC

SALT:CLR-OFFWH-FRSTY, SFT-FRM, SBRND-SBANG, MXLN-FXLN, TXT/GRNY

SALT:CLR-OFFWH-FRSTY, SFT-FRM, SBRND-SBANG, MXLN-FXLN, TXT/GRNY

26JUL12 DRLG @ 7064'

SALT:CLR-OFFWH-FRSTY, SFT-FRM, SBRND-SBANG, MXLN-FXLN, TXT/GRNY

SALT:CLR-OFFWH-FRSTY, SFT-FRM, SBRND-SBANG, MXLN-FXLN, TXT/GRNY

SALT:CLR-OFFWH-FRSTY, SFT-FRM, SBRND-SBANG, MXLN-FXLN, TXT/GRNY

SALT:CLR-OFFWH-FRSTY, SFT-FRM, SBRND-SBANG, MXLN-FXLN, TXT/GRNY

SALT:CLR-OFFWH-FRSTY, SFT-FRM, SBRND-SBANG, MXLN-FXLN, TXT/GRNY

ROP (min/ft) 15
Gamma (API) 1

MW-10 VIS-29
pH-11.3
WOB-20
RPM-70
SPM-100
PP-1130psig

CONN

TG (units) 40
CO2 (PPM) 30

C1 (PPM) 1000
C2 (PPM) 1000
C3 (PPM) 1000
C4 (PPM) 1000

7000

7050

7100

7150



SHALE #9 7188'-7204'

SH: ORGANIC, GY-DKGY-BLK, SFT-MOD
 HD, BLKY-S/BLKY, SL FISS IP,
 SLTY, ARG MTX, EA, DULL,
 MOD CALC

SALT:CLR-OFFWH-FRSTY, SFT-FRM, SBRND-SBANG,
 MXLN-FXLN, TXT/GRNY

SALT:CLR-OFFWH-FRSTY, SFT-FRM, SBRND-SBANG,
 MXLN-FXLN, TXT/GRNY

SALT:CLR-OFFWH-FRSTY, SFT-FRM, SBRND-SBANG,
 MXLN-FXLN, TXT/GRNY

SALT:CLR-OFFWH-FRSTY, SFT-FRM, SBRND-SBANG,
 MXLN-FXLN, TXT/GRNY

SALT:CLR-OFFWH-FRSTY, SFT-FRM, SBRND-SBANG,
 MXLN-FXLN, TXT/GRNY

SALT:CLR-OFFWH-FRSTY, SFT-FRM, SBRND-SBANG,
 MXLN-FXLN, TXT/GRNY

SALT:CLR-OFFWH-FRSTY, SFT-FRM, SBRND-SBANG,
 MXLN-FXLN, TXT/GRNY

BASE SALT @ 7393'

SH: ORGANIC, GY-DKGY-BLK, SFT-MOD
 HD, BLKY-S/BLKY, SL FISS IP,

ROP (min/ft) 15
 Gamma (API) 1

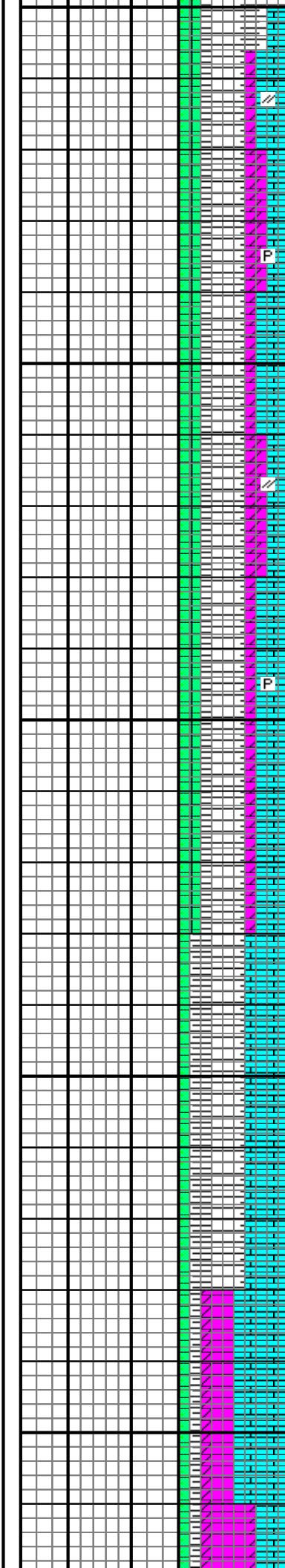
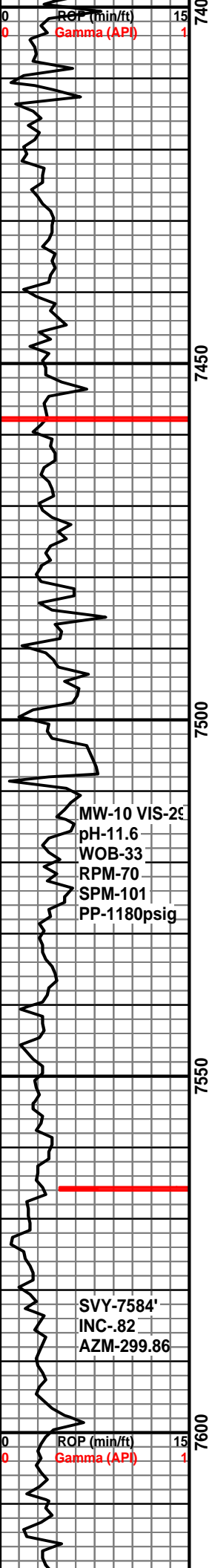
TG (units) 40
 CO2 (PPM) 30

C1 (PPM) 1000
 C2 (PPM) 1000
 C3 (PPM) 1000
 C4 (PPM) 1000

SVY-7299'
 INC-0.92
 AZM-324.04

BASE SALT
@ 7393'

7200
7250
7300
7350
7393



SLTY, ARG MTX, EA, DULL, MOD CALC

LS: WH-OFF-WH-DKGY, FRM-HD, MICRXLN-FXLN/SMTH/ CRYPTXLN IP, SLTY TXT/SNDY-GRNY

SH: GY-DKGY-BLK, SFT-MOD HD, BLKY-S/BLKY, SL FISS IP, SLTY, ARG MTX, EA, DULL, MOD CALC

LS/DOL: WH-OFF-WH-DKGY, FRM-HD, MICRXLN-FXLN/SMTH/ CRYPTXLN IP, SLTY TXT/SNDY-GRN

SH: GY-DKGY-BLK, SFT-MOD HD, BLKY-S/BLKY, SL FISS IP, SLTY, ARG MTX, EA, DULL, MOD CALC

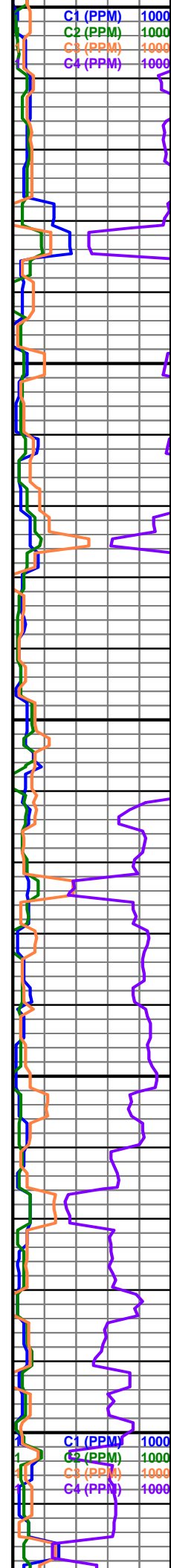
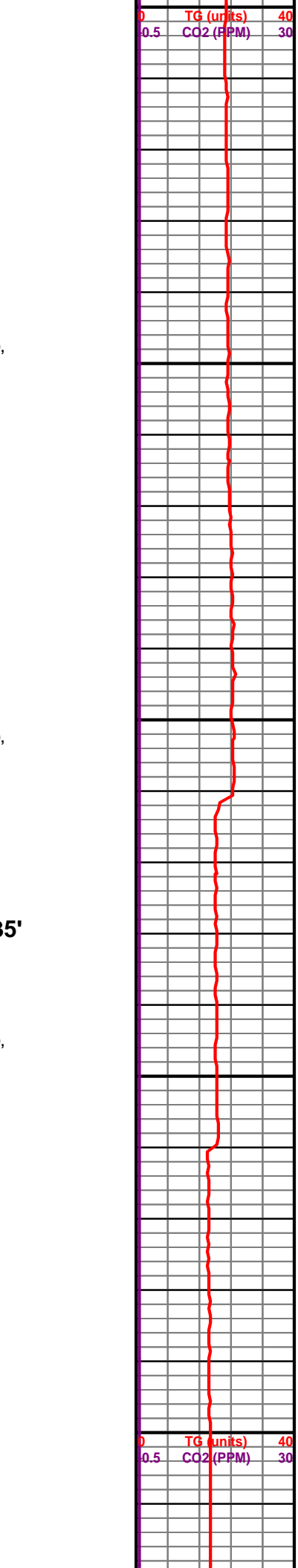
LS/DOL: WH-OFF-WH-DKGY, FRM-HD, MICRXLN-FXLN/SMTH/ CRYPTXLN IP, SLTY TXT/SNDY-GRN

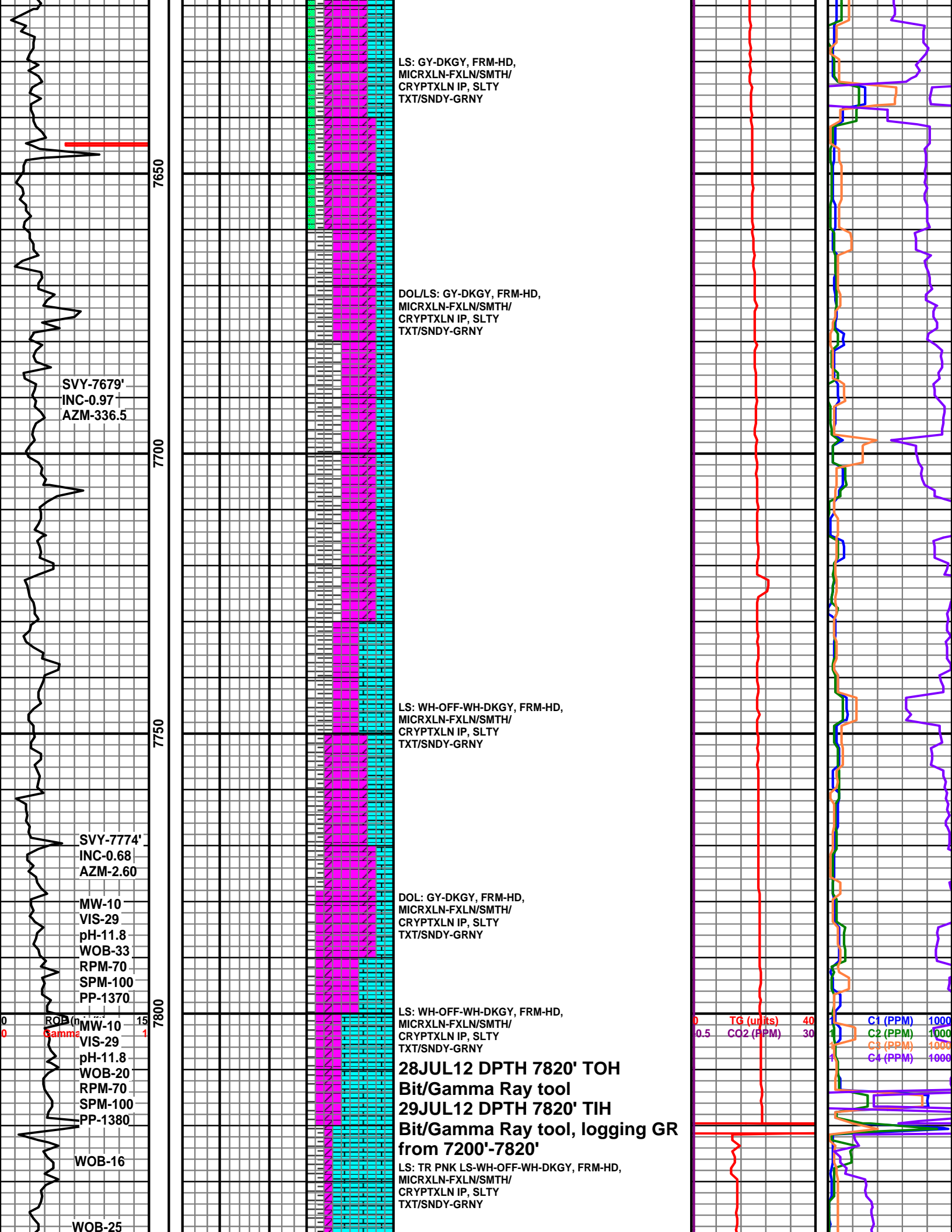
27JUL12 DRLG @ 7535'

LS/DOL: WH-OFF-WH-DKGY, FRM-HD, MICRXLN-FXLN/SMTH/ CRYPTXLN IP, SLTY TXT/SNDY-GRN

SH: GY-DKGY-BLK, SFT-MOD HD, BLKY-S/BLKY, SL FISS IP, SLTY, ARG MTX, EA, DULL, MOD CALC

LS: WH-OFF-WH-DKGY, FRM-HD, MICRXLN-FXLN/SMTH/ CRYPTXLN IP, SLTY TXT/SNDY-GRNY





LS: GY-DKGY, FRM-HD,
MICRXLN-FXLN/SMTH/
CRYPTXLN IP, SLTY
TXT/SNDY-GRNY

DOL/LS: GY-DKGY, FRM-HD,
MICRXLN-FXLN/SMTH/
CRYPTXLN IP, SLTY
TXT/SNDY-GRNY

LS: WH-OFF-WH-DKGY, FRM-HD,
MICRXLN-FXLN/SMTH/
CRYPTXLN IP, SLTY
TXT/SNDY-GRNY

DOL: GY-DKGY, FRM-HD,
MICRXLN-FXLN/SMTH/
CRYPTXLN IP, SLTY
TXT/SNDY-GRNY

LS: WH-OFF-WH-DKGY, FRM-HD,
MICRXLN-FXLN/SMTH/
CRYPTXLN IP, SLTY
TXT/SNDY-GRNY

LS: TR PNK LS-WH-OFF-WH-DKGY, FRM-HD,
MICRXLN-FXLN/SMTH/
CRYPTXLN IP, SLTY
TXT/SNDY-GRNY

SVY-7679'
INC-0.97
AZM-336.5

SVY-7774'
INC-0.68
AZM-2.60

MW-10
VIS-29
pH-11.8
WOB-33
RPM-70
SPM-100
PP-1370

ROB (p) MW-10 15
Gamma 1
VIS-29
pH-11.8
WOB-20
RPM-70
SPM-100
PP-1380

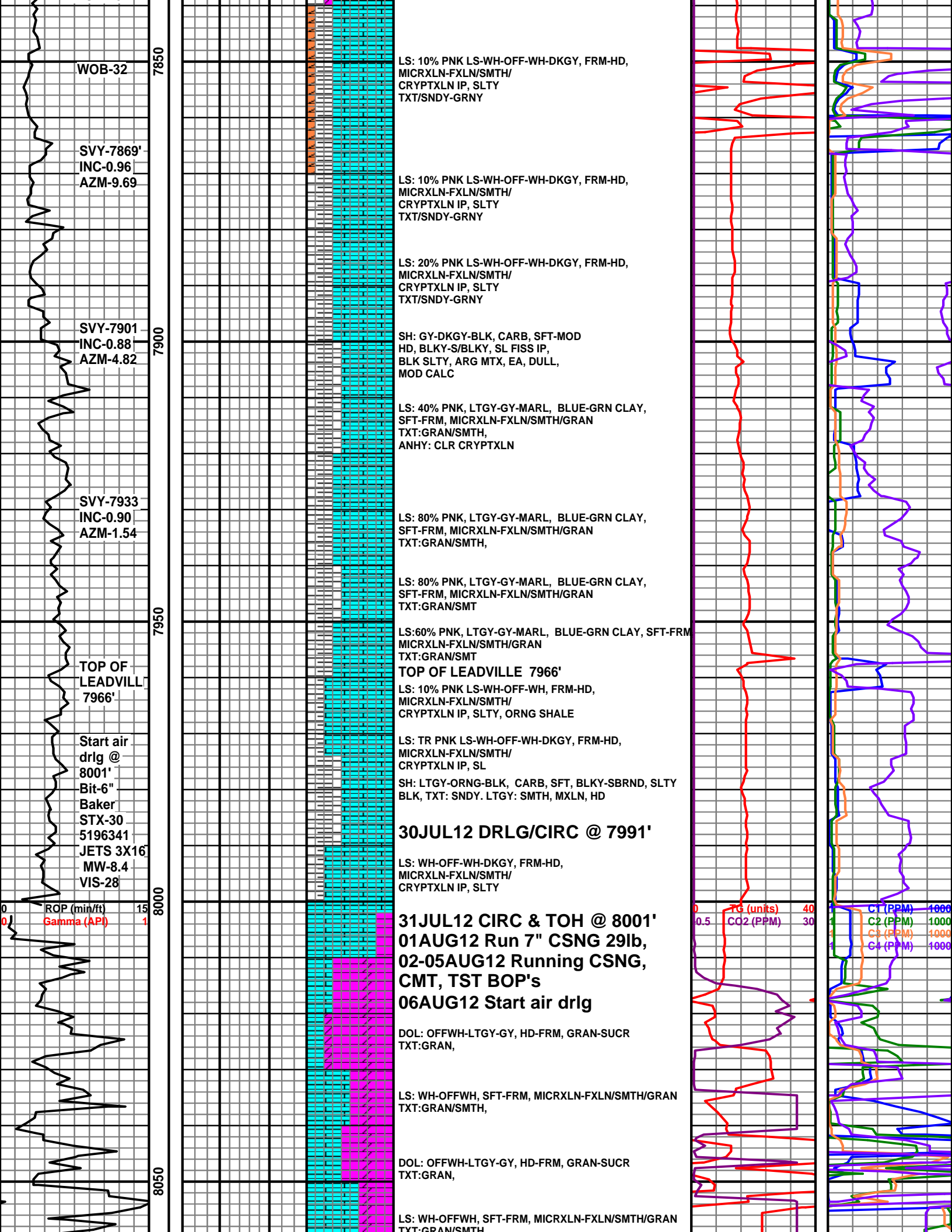
WOB-16

WOB-25

**28JUL12 DPTH 7820' TOH
Bit/Gamma Ray tool
29JUL12 DPTH 7820' TIH
Bit/Gamma Ray tool, logging GR
from 7200'-7820'**

0 TG (units) 40
0.5 CO2 (PPM) 30

C1 (PPM) 1000
C2 (PPM) 1000
C3 (PPM) 1000
C4 (PPM) 1000



WOB-32

7850

SVY-7869'
INC-0.96
AZM-9.69

SVY-7901
INC-0.88
AZM-4.82

7900

SVY-7933
INC-0.90
AZM-1.54

7950

TOP OF
LEADVILL
7966'

Start air
drlg @
8001'
Bit-6"
Baker
STX-30
5196341
JETS 3X16"
MW-8.4
VIS-28

8000

LS: 10% PNK LS-WH-OFF-WH-DKGY, FRM-HD,
MICRXLN-FXLN/SMTH/
CRYPTXLN IP, SLTY
TXT/SNDY-GRNY

LS: 10% PNK LS-WH-OFF-WH-DKGY, FRM-HD,
MICRXLN-FXLN/SMTH/
CRYPTXLN IP, SLTY
TXT/SNDY-GRNY

LS: 20% PNK LS-WH-OFF-WH-DKGY, FRM-HD,
MICRXLN-FXLN/SMTH/
CRYPTXLN IP, SLTY
TXT/SNDY-GRNY

SH: GY-DKGY-BLK, CARB, SFT-MOD
HD, BLKY-S/BLKY, SL FISS IP,
BLK SLTY, ARG MTX, EA, DULL,
MOD CALC

LS: 40% PNK, LTGY-GY-MARL, BLUE-GRN CLAY,
SFT-FRM, MICRXLN-FXLN/SMTH/GRAN
TXT:GRAN/SMTH,
ANH: CLR CRYPTXLN

LS: 80% PNK, LTGY-GY-MARL, BLUE-GRN CLAY,
SFT-FRM, MICRXLN-FXLN/SMTH/GRAN
TXT:GRAN/SMTH,

LS: 80% PNK, LTGY-GY-MARL, BLUE-GRN CLAY,
SFT-FRM, MICRXLN-FXLN/SMTH/GRAN
TXT:GRAN/SMT

LS:60% PNK, LTGY-GY-MARL, BLUE-GRN CLAY, SFT-FRM
MICRXLN-FXLN/SMTH/GRAN
TXT:GRAN/SMT

TOP OF LEADVILLE 7966'

LS: 10% PNK LS-WH-OFF-WH, FRM-HD,
MICRXLN-FXLN/SMTH/
CRYPTXLN IP, SLTY, ORNG SHALE

LS: TR PNK LS-WH-OFF-WH-DKGY, FRM-HD,
MICRXLN-FXLN/SMTH/
CRYPTXLN IP, SL
SH: LTGY-ORNG-BLK, CARB, SFT, BLKY-SBRND, SLTY
BLK, TXT: SNDY. LTGY: SMTH, MXLN, HD

30JUL12 DRLG/CIRC @ 7991'

LS: WH-OFF-WH-DKGY, FRM-HD,
MICRXLN-FXLN/SMTH/
CRYPTXLN IP, SLTY

31JUL12 CIRC & TOH @ 8001'
01AUG12 Run 7" CSNG 29lb,
02-05AUG12 Running CSNG,
CMT, TST BOP's
06AUG12 Start air drlg

DOL: OFFWH-LTGY-GY, HD-FRM, GRAN-SUCR
TXT:GRAN,

LS: WH-OFFWH, SFT-FRM, MICRXLN-FXLN/SMTH/GRAN
TXT:GRAN/SMTH,

DOL: OFFWH-LTGY-GY, HD-FRM, GRAN-SUCR
TXT:GRAN,

LS: WH-OFFWH, SFT-FRM, MICRXLN-FXLN/SMTH/GRAN
TXT:GRAN/SMTH

TG (units) 40
CO2 (PPM) 30

C1 (PPM) 1000
C2 (PPM) 1000
C3 (PPM) 1000
C4 (PPM) 1000

ROP (min/ft) 15
Gamma (API) 1

8000

8050

TXT:GRANSMITH

CO2 2-3
mmcf/d

07AUG12 DPTH @ 8068' Connecting flow meter

DOL: OFFWH-LTGY-GY, HD-FRM, GRAN-SUCR
TXT:GRAN,

NO SAMPLES

NO SAMPLES
CO2 FLOW AND AIR DRLG ALLOWED FOR NO SAMPLES.
SAMPLES SO FINE THEY WERE APPARENTLY BLOWN
OUT WITH THE CO2/AIR FLOW.

NO SAMPLES

NO SAMPLES
CO2 FLOW AND AIR DRLG ALLOWED FOR NO SAMPLES.
SAMPLES SO FINE THEY WERE APPARENTLY BLOWN
OUT WITH THE CO2/AIR FLOW.

08AUG12 DPTH @ 8141'. Rigging up electric loggers.

09AUG12 DPTH @ 8141'. Waiting on orders.

10AUG12 TD DPTH 8141' Acidize well. Rig down move mud logging trailer.

dpth @
8141'
MASS
FLOW-6.0
Volume
metrics
87.0
NO units

TD 8141'

Thanks for using Above
Enterprise, Leon Walters

8100

8150

00

CO2 4-5
mmcf/d

TD 8141'

