

WELL LOCATION PLAT

T4S, R64W, 6th P.M.

ConocoPhillips Company

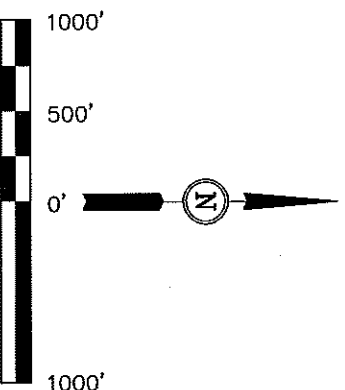
Well location, TEBO #33-1H, located as shown in the SW 1/4 SW 1/4 of Section 33, T4S, R64W, 6th P.M., Arapahoe County, Colorado.

BASIS OF ELEVATION

BENCHMARK 374 LOCATED ON THE SECTION LINE BETWEEN SECTIONS 12 & 13, T5S, R64W, 6th. P.M., TAKEN FROM 1988 PUBLISHED DATUM BY THE UNITED STATES DEPARTMENT OF THE INTERIOR, GEOLOGICAL SURVEY AS BEING 6054.61 FEET.

BASIS OF BEARINGS

BASIS OF BEARINGS IS A G.P.S. OBSERVATION.



CERTIFICATE

THIS IS TO CERTIFY THAT THE ABOVE PLAT WAS PREPARED FROM FIELD NOTES OF ACTUAL SURVEYS MADE BY A LICENSED SURVEYOR UNDER MY SUPERVISION AND THAT THE SAME ARE TRUE AND CORRECT TO THE BEST OF MY KNOWLEDGE AND BELIEF.

REGISTERED LAND SURVEYOR
STATE OF COLORADO
NO. 17492
EXPIRATION DATE 12-14-12

REVISED: 12-14-12

UTAH ENGINEERING & LAND SURVEYING
85 SOUTH 200 EAST - VERNAL, UTAH 84078
(435) 789-1017

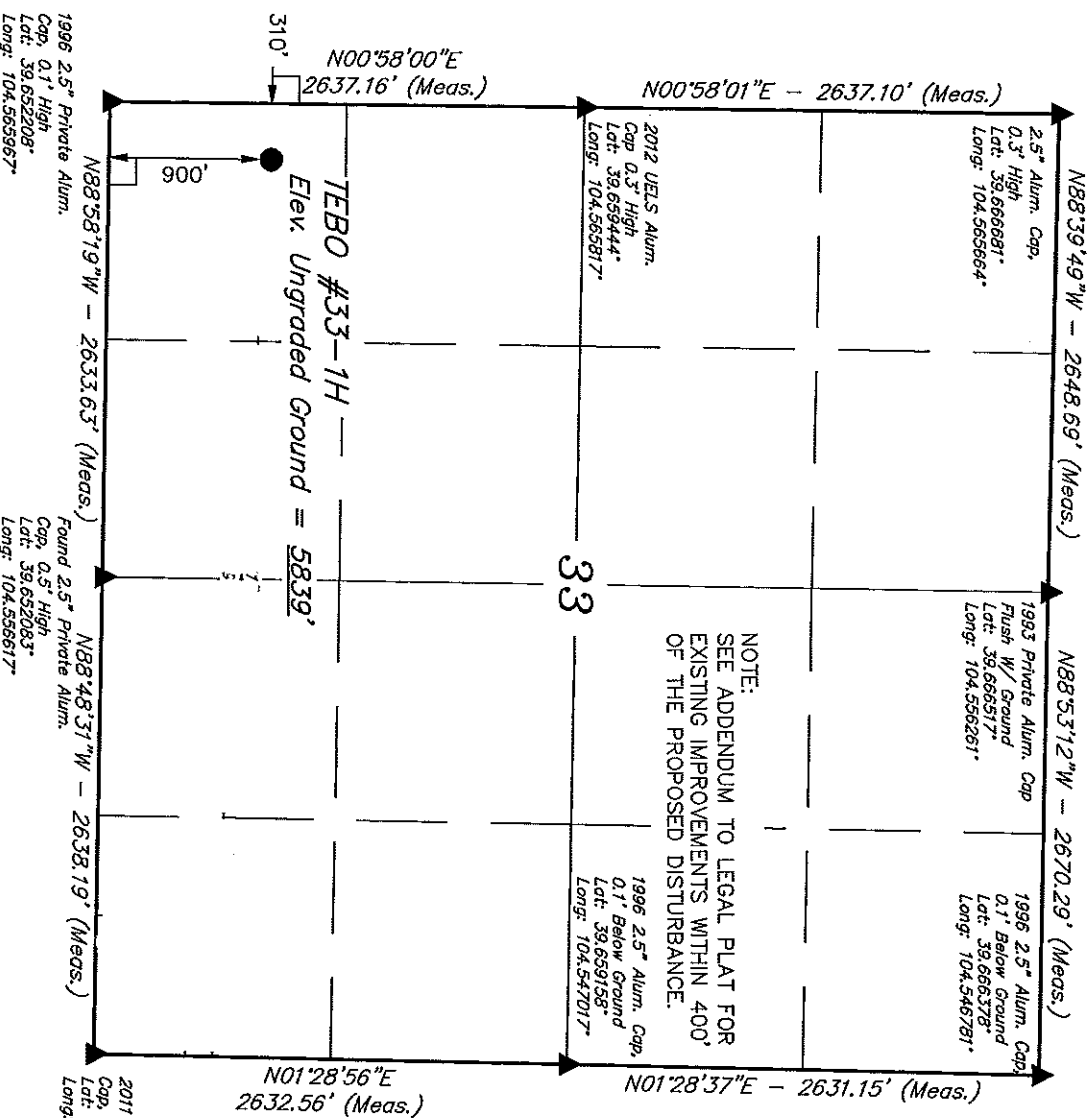
| | | | | | |
|-------|------------|----------------|----------|-------------|----------|
| SCALE | 1" = 1000' | DATE SURVEYED: | 10-08-12 | DATE DRAWN: | 10-09-12 |
|-------|------------|----------------|----------|-------------|----------|

| | | | |
|---------|---------------|------------|------------------------|
| PARTY | D.L.S. B.D.H. | REFERENCES | G.L.O. PLAT |
| WEATHER | WARM | FILE | ConocoPhillips Company |

LEGEND:

- = 90° SYMBOL
- = PROPOSED WELL HEAD.
- ▲ = SECTION CORNERS LOCATED.

| | |
|---------------------------------------|------------|
| NAD 83 (SURFACE LOCATION) | PDOP = 2.0 |
| LATITUDE = 39.3916.79° (39.654664) | |
| LONGITUDE = 104.3353.33° (104.564814) | |
| NAD 27 (SURFACE LOCATION) | |
| LATITUDE = 39.3916.84° (39.654678) | |
| LONGITUDE = 104.3351.45° (104.564292) | |



SECTION BREAKDOWN T4S, R64W, 6th P.M.

ConocoPhillips Company

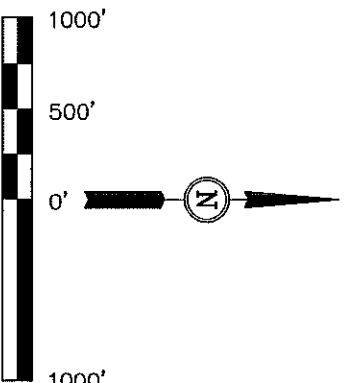
Well location, TEBO #33-1H, located as shown in the SW 1/4 SW 1/4 of Section 33, T4S, R64W, 6th P.M., Arapahoe County, Colorado.

BASIS OF ELEVATION

BENCHMARK 374 LOCATED ON THE SECTION LINE BETWEEN SECTIONS 12 & 13, T5S, R64W, 6th. P.M., TAKEN FROM 1988 PUBLISHED DATUM BY THE UNITED STATES DEPARTMENT OF THE INTERIOR, GEOLOGICAL SURVEY AS BEING 6054.61 FEET.

BASIS OF BEARINGS

BASIS OF BEARINGS IS A G.P.S. OBSERVATION.



CERTIFICATE

THIS IS TO CERTIFY THAT THE ABOVE PLAT WAS PREPARED FROM FIELD NOTES OF ACTUAL SURVEYS MADE BY ME OR UNDER MY SUPERVISION AND THAT THE SAME ARE TRUE AND CORRECT TO THE BEST OF MY KNOWLEDGE AND BELIEF.

REGISTERED LAND SURVEYOR
STATE OF COLORADO
No. 117493
EXPIRATION DATE 12-14-12

2011 ULS Alum. Cap,
0.1' High
Lat: 39.651936°
Long: 104.547253°
REVISED: 12-14-12
REVISED: 11-02-12

UINTAH ENGINEERING & LAND SURVEYING
85 SOUTH 200 EAST - VERNAL, UTAH 84078
(435) 789-1017

PDOP = 2.0

| SCALE | DATE SURVEYED: | DATE DRAWN: |
|------------|----------------|-------------|
| 1" = 1000' | 10-08-12 | 10-09-12 |

| NAD 83 (SURFACE LOCATION) | PARTY | REFERENCES |
|----------------------------------------|---------------|------------------------|
| LATITUDE = 39°39'16.79" (39.654664) | D.L.S. B.D.H. | G.L.O. PLAT |
| LONGITUDE = 104°33'53.33" (104.564814) | WEATHER | FILE |
| NAD 27 (SURFACE LOCATION) | WARM | ConocoPhillips Company |
| LATITUDE = 39°39'16.84" (39.654678) | | |
| LONGITUDE = 104°33'51.45" (104.564292) | | |

LEGEND:

- 90° SYMBOL
- PROPOSED WELL HEAD.
- SECTION CORNERS LOCATED.

