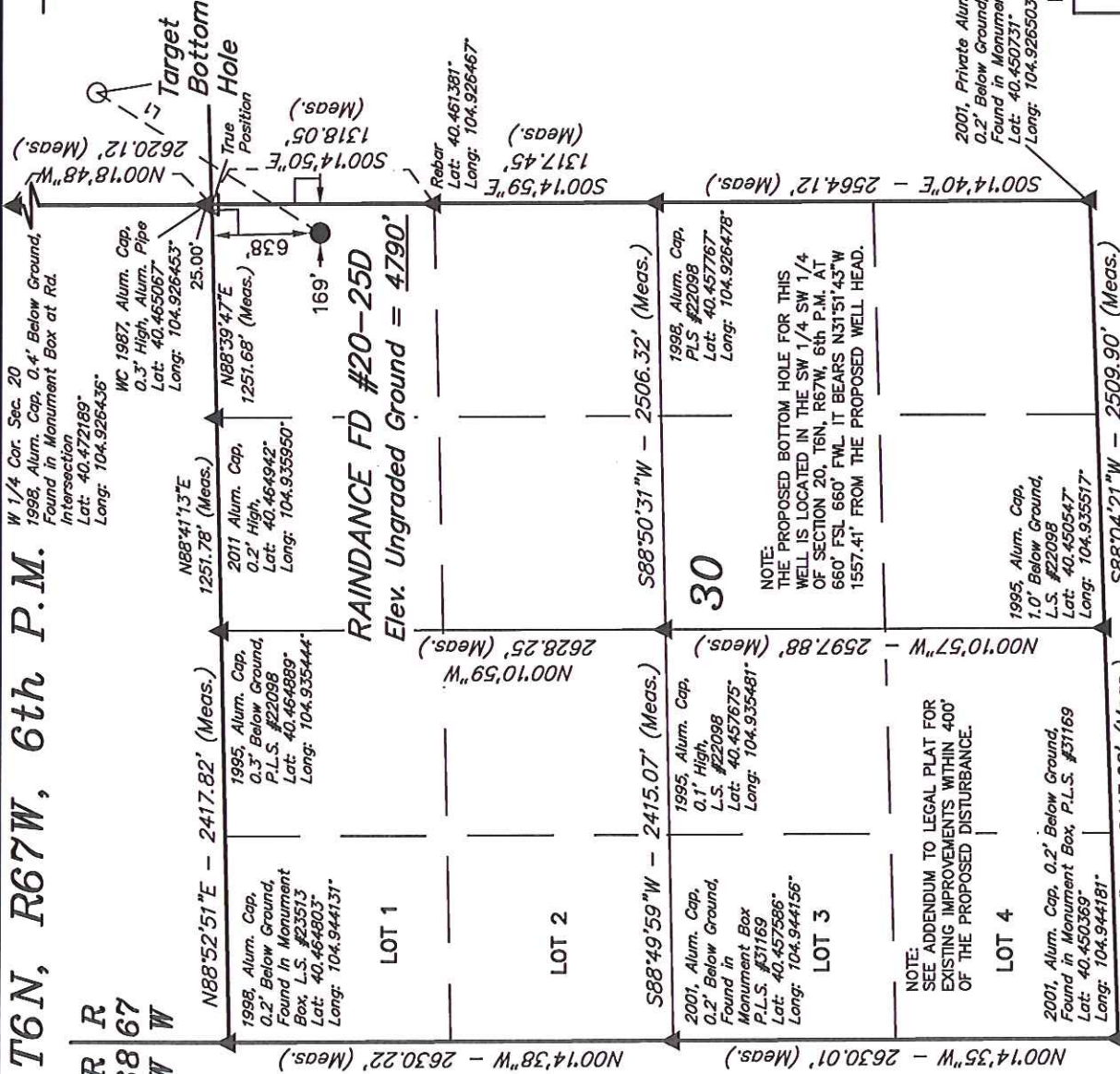
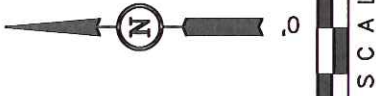


GREAT WESTERN OIL & GAS COMPANY

Well location, RANDANCE FD #20-25D (SURFACE LOCATION), located as shown in the NE 1/4 NE 1/4 of Section 30, T6N, R67W, 6th P.M., Weld County, Colorado.



LINE TABLE		
LINE	DIRECTION	LENGTH
L1	N31°51'43"E	1557.41'



BASIS OF ELEVATION

USGS COOPERATIVE BASE NETWORK CONTROL STATION,
DESIGNATION 'VERMILYEA'. NGS DATA SHEET LISTS THE
NAVD 88 ELEVATION AS BEING 5026 FEET

BASIS OF BEARINGS

BASIS OF BEARINGS IS A G.P.S. OBSERVATION.

CERTIFICATE

THIS IS TO CERTIFY THAT THE ABOVE LAT WAS PREPARED FROM FIELD NOTES OF ACTUAL SURVEYS MADE BY ME OR UNDER MY SUPERVISION AND THAT THE SAME ARE TRUE AND CORRECT TO THE BEST OF MY KNOWLEDGE AND BELIEF.

2001, Private Alum. Cap,
0.2' Below Ground,
Found in Monument Box
Lat: 40.450731°
/Long: 104.926503°

REVISÉ: 10-19-12

UTAH ENGINEERING & LAND SURVEYING

85 SOUTH 200 EAST - VERNAL, UTAH 84078

(435) 789-1017

PDOP = 2.0		SCALE 1" = 1000'	DATE SURVEYED: 09-28-12	DATE DRAWN: 10-02-12
NAD 83 (SURFACE LOCATION)		PARTY	REFERENCES	
LATITUDE = 40°27'47.66" (40.463239)		L.S. G.W. J.W.	G.L.O. PLAT	
LONGITUDE = 104°55'37.44" (104.927067)				
NAD 27 (SURFACE LOCATION)		WEATHER	FILE	GREAT WESTERN OIL & GAS COMPANY
LATITUDE = 40°27'47.72" (40.463256)		WARM		
LONGITUDE = 104°55'35.53" (104.926536)				

LEGEND:

= 90° SYMBOL
 = PROPOSED WELL HEAD.
 = SECTION CORNERS LOCATED.
 = SECTION CORNERS RE-
 ESTABLISHED (Not Set on
 Ground.)

T6N, R67W, 6th P.M.

GREAT WESTERN OIL & GAS COMPANY

Well location, RAINDANCE FD #20-25D (TARGET BOTTOM HOLE), located as shown in the SW 1/4 SW 1/4 of Section 29, T6N, R67W, 6th P.M., Weld County, Colorado.

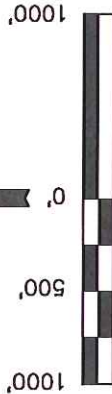
BASIS OF ELEVATION

USGS COOPERATIVE BASE NETWORK CONTROL STATION, DESIGNATION 'VERMILYEA'. NGS DATA SHEET LISTS THE NAVD 88 ELEVATION AS BEING 5026 FEET

BASIS OF BEARINGS

BASIS OF BEARINGS IS A G.P.S. OBSERVATION.

LINE TABLE		
LINE	DIRECTION	LENGTH
L1	N31°51'43"E	1557.41'



CERTIFICATE

THIS IS TO CERTIFY THAT THE ABOVE PLAT WAS PREPARED FROM FIELD NOTES OF ACTUAL SURVEYS MADE BY ME OR UNDER MY SUPERVISION AND THAT THE SAME ARE TRUE AND CORRECT TO THE BEST OF MY KNOWLEDGE AND BELIEF.

REGISTERED LAND SURVEYOR
REGISTRATION NO. 17452
STATE OF COLORADO
9-19-12

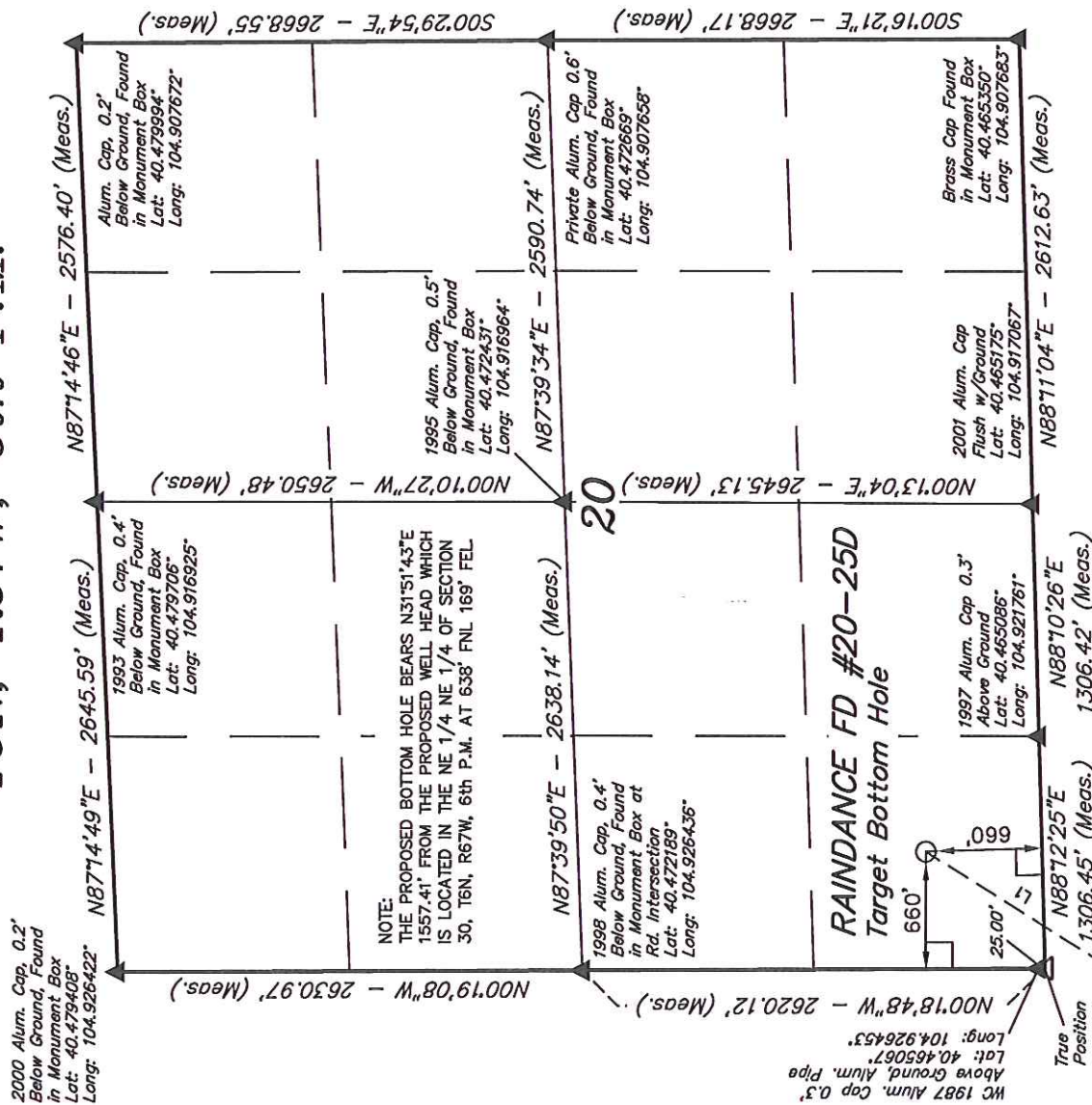
REVISED: 10-19-12

UNTIAH ENGINEERING & LAND SURVEYING

85 SOUTH 200 EAST - VERNAL, UTAH 84078

(435) 789-1017

SCALE 1" = 1000'	DATE SURVEYED: 09-28-12	DATE DRAWN: 10-02-12
PARTY L.S. G.W. J.W.	REFERENCES G.L.O. PLAT	
WEATHER WARM	FILE GREAT WESTERN OIL & GAS COMPANY	



NAD 83 (TARGET BOTTOM HOLE) LATITUDE = 40°28'00.67" (40.466853) LONGITUDE = 104°55'26.68" (104.924078)
NAD 27 (TARGET BOTTOM HOLE) LATITUDE = 40°28'00.73" (40.466869) LONGITUDE = 104°55'24.77" (104.923547)