

# **T6N, R67W, 6th P.M.** **GREAT WESTERN OIL & GAS COMPANY** Well location, RAINDANCE FD #20-33D (SURFACE LOCATION), located as shown in the NE 1/4 NE 1/4 of Section 30, T6N, R67W, 6th P.M., Weld County, Colorado.

W 1/4 Cor. Sec. 20  
1998, Alum. Cap. 0.4' Below Ground,  
Found in Monument Box at Rd.  
Intersection  
Lat: 40.472189°  
Long: 104.926436°

Target  
Bottom  
Hole

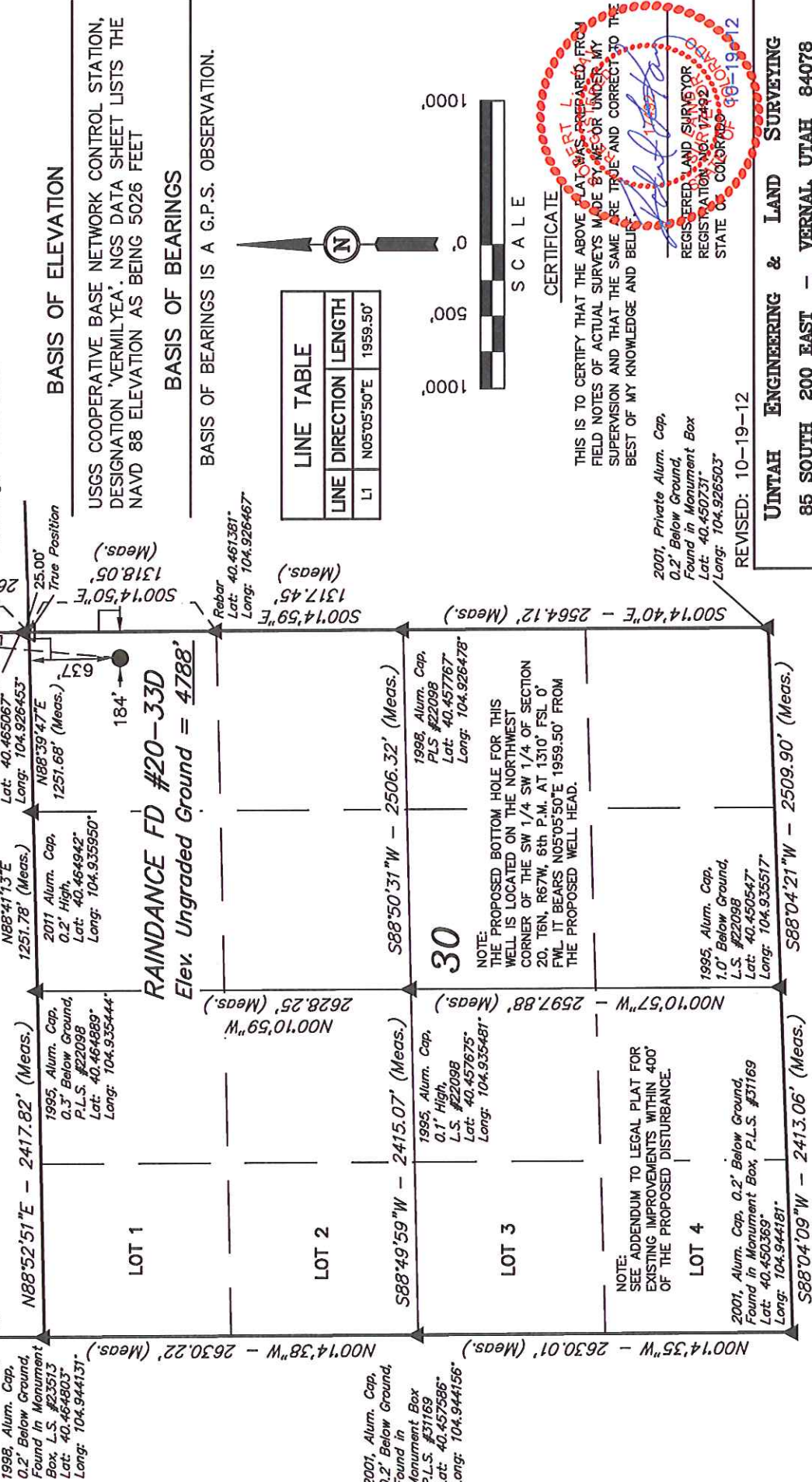
WC 1987, Alum. Cap.  
0.3' High, Alum. Pipe  
Lat: 40.465067°  
Long: 104.926453°

N88°41'13"E  
1251.78' (Meas.)

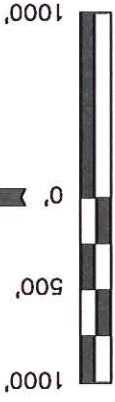
2011 Alum. Cap.  
0.2' High,  
Lat: 40.464942°  
Long: 104.935590°

1995, Alum. Cap.  
0.3' Below Ground,  
P.L.S. #22098  
Lat: 40.464889°  
Long: 104.935444°

1998, Alum. Cap.  
0.2' Below Ground,  
Found in Monument  
Box, L.S. #23513  
Lat: 40.464803°  
Long: 104.944131°



LINE TABLE		
LINE	DIRECTION	LENGTH
L1	N05°05'50"E	1959.50'



**CERTIFICATE**

THIS IS TO CERTIFY THAT THE ABOVE PLAT WAS PREPARED FROM FIELD NOTES OF ACTUAL SURVEYS MADE BY ME OR UNDER MY SUPERVISION AND THAT THE SAME ARE TRUE AND CORRECT TO THE BEST OF MY KNOWLEDGE AND BELIEF.

2001, Private Alum. Cap.  
0.2' Below Ground,  
Found in Monument Box  
Lat: 40.450731°  
Long: 104.926503°

REGISTERED LAND SURVEYOR  
REGISTRATION NO. 17492  
STATE OF COLORADO 98-19-12

REVISED: 10-19-12

**UNITAH ENGINEERING & LAND SURVEYING**

85 SOUTH 200 EAST - VERNAL, UTAH 84078  
(435) 789-1017

DATE SURVEYED: 09-28-12  
DATE DRAWN: 10-02-12

REFERENCES: G.L.O. PLAT

FILE: GREAT WESTERN OIL & GAS COMPANY

WEATHER: WARM

SCALE: 1" = 1000'

PARTY: L.S. G.W. J.W.

**LEGEND:**

L = 90° SYMBOL

= PROPOSED WELL HEAD.

= SECTION CORNERS LOCATED.

= SECTION CORNERS RE-ESTABLISHED (Not Set on Ground.)

**PDOP = 1.4**

NAD 83 (SURFACE LOCATION)	
LATITUDE = 40°27'47.67"	(40.463242)
LONGITUDE = 104°55'37.63"	(104.927119)
NAD 27 (SURFACE LOCATION)	
LATITUDE = 40°27'47.73"	(40.463258)
LONGITUDE = 104°55'35.72"	(104.926589)



T6N, R67W, 6th P.M.

GREAT WESTERN OIL & GAS COMPANY

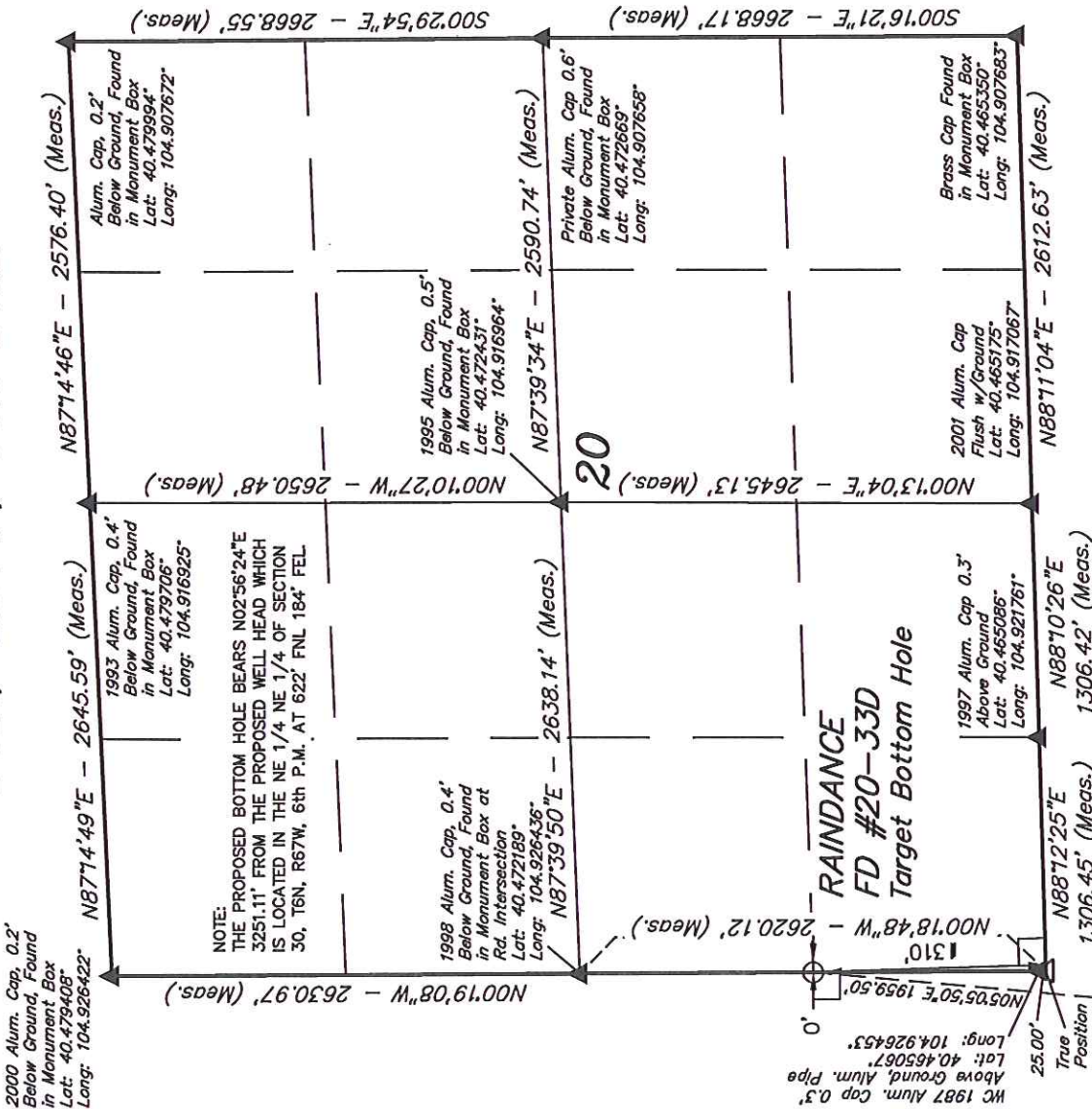
Well location, RAINDANCE FD #20-33D (TARGET BOTTOM HOLE), located as shown on the Northwest Corner of the SW 1/4 SW 1/4 of Section 20, T6N, R67W, 6th P.M., Weld County, Colorado.

BASIS OF ELEVATION

USGS COOPERATIVE BASE NETWORK CONTROL STATION, DESIGNATION 'VERMILYEA'. NGS DATA SHEET LISTS THE NAVD 88 ELEVATION AS BEING 5026 FEET

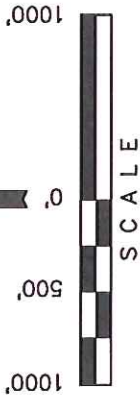
BASIS OF BEARINGS

BASIS OF BEARINGS IS A G.P.S. OBSERVATION.



- LEGEND:
- 90° SYMBOL
  - PROPOSED WELL HEAD.
  - SECTION CORNERS LOCATED.
  - SECTION CORNERS RE-ESTABLISHED (Not Set on Ground.)

Surface Location



CERTIFICATE

THIS IS TO CERTIFY THAT THE ABOVE PLAT WAS PREPARED FROM FIELD NOTES OF ACTUAL SURVEYS MADE BY ME OR UNDER MY SUPERVISION AND THAT THE SAME ARE TRUE AND CORRECT TO THE BEST OF MY KNOWLEDGE AND BELIEF.

REGISTERED LAND SURVEYOR  
REGISTRATION NO. 17492  
STATE OF COLORADO 98-19-12

REVISED: 10-19-12

UNTAH ENGINEERING & LAND SURVEYING			
85 SOUTH 200 EAST - VERNAL, UTAH 84078			
(435) 789-1017			
SCALE 1" = 1000'	DATE SURVEYED: 09-28-12	DATE DRAWN: 10-02-12	
PARTY L.S. G.W. J.W.	REFERENCES G.L.O. PLAT		
WEATHER WARM	FILE GREAT WESTERN OIL & GAS COMPANY		

NAD 83 (TARGET BOTTOM HOLE)	
LATITUDE = 40°28'06.94" (40.468594)	
LONGITUDE = 104°55'35.20" (104.926444)	
NAD 27 (TARGET BOTTOM HOLE)	
LATITUDE = 40°28'07.00" (40.468611)	
LONGITUDE = 104°55'33.29" (104.925914)	