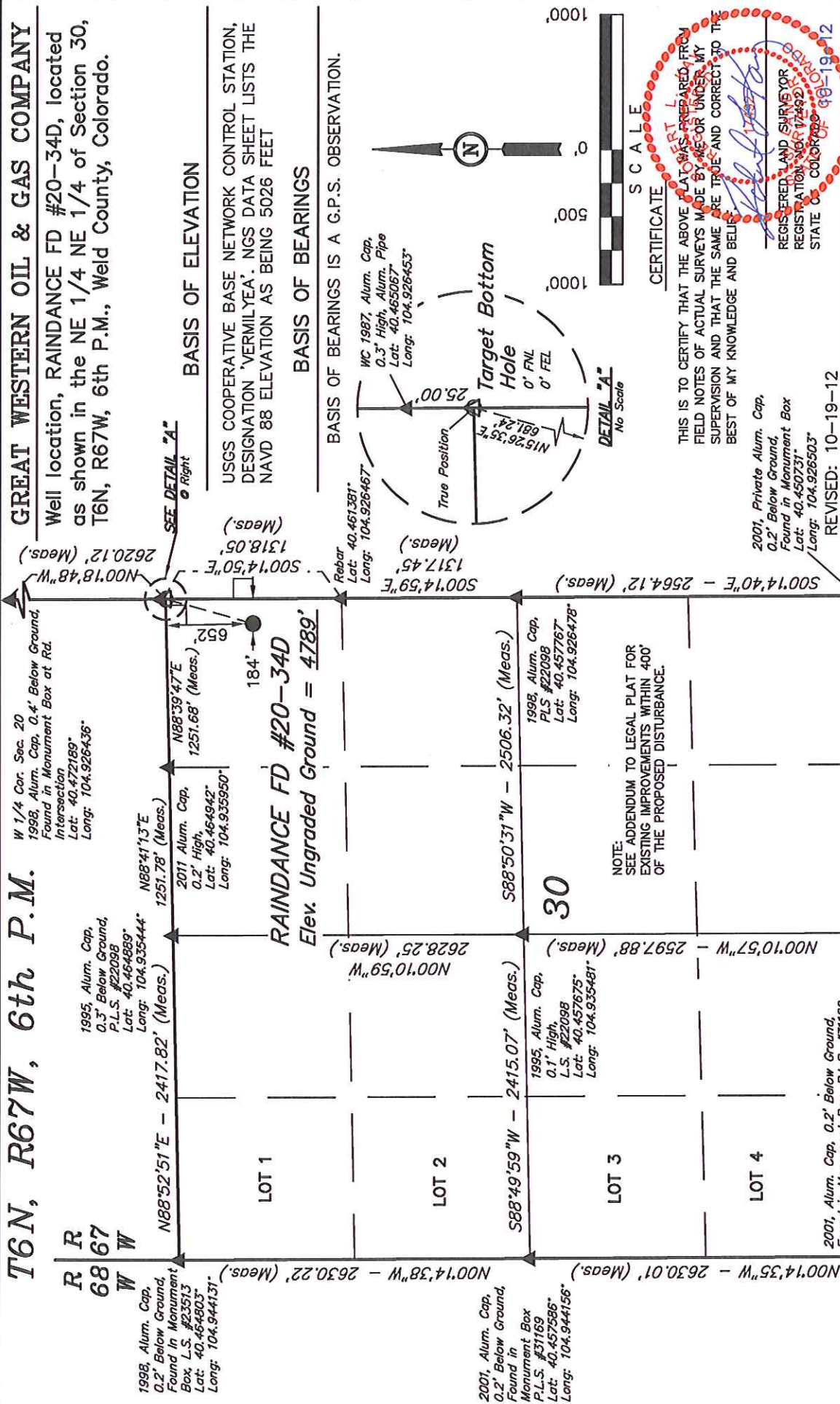


T6N, R67W, 6th P.M.

W 1/4 Cor. Sec. 20
1998, Alum. Cap, O.
Found in Monument
Intersection
Lat: 40.472189°
Long: 104.926436°

GREAT WESTERN OIL & GAS COMPANY

Well location, RANDANCE FD #20-34D, located as shown in the NE 1/4 NE 1/4 of Section 30, T6N, R67W, 6th P.M., Weld County, Colorado.



NOTE:
SEE ADDENDUM TO LEGAL PLAT FOR
EXISTING IMPROVEMENTS WITHIN 400'
OF THE PROPOSED DISTURBANCE.

CERTIFICATE

THIS IS TO CERTIFY THAT THE ABOVE PLAT WAS PREPARED FROM FIELD NOTES OF ACTUAL SURVEYS MADE BY ME OR UNDER MY SUPERVISION AND THAT THE SAME ARE TRUE AND CORRECT TO THE BEST OF MY KNOWLEDGE AND BELIEF.

2001, Private Alum. Cap.
0.2' Below Ground,
Found in Monument Box
Lat: 40.450731°
/Long: 104.926503°

REVISÉ: 10-19-12

UNTAH ENGINEERING & LAND SURVEYING

85 SOUTH 200 EAST - VERNAL, UTAH 84078

(435) 789-1017

DATE SURVEYED:	DATE DRAWN:
----------------	-------------

REFERENCES

G.L.O. PLAT	
-------------	--

FILE GREAT WESTERN OIL

& GAS COMPANY

LEGEND:

 $\angle = 90^\circ$ SYMBOL

● = PROPOSED WELL HEAD.

▲ = SECTION CORNERS LOCATED.

Δ = SECTION CORNERS RE-

ESTABLISHED (Not Set on

Ground.)

NAD 83 (SURFACE LOCATION)
1. A 277 10F
4. 697 47 50R / 1

LATITUDE = 40°21'41.52" (4)
LONGITUDE = 104°55'37.63" (1)

NAD 27 (SURFACE LOCATION)	
LATITUDE = 40°27'47.58" (N)	

NAD 83 (SURFACE LOCATION)	
1. LATITUDE	40° 57' 43" S 07' / 40.962000

LATITUDE = 40°27'41.52" (40.463200)
LONGITUDE = 104°55'37.63" (104.927119)

NAD 27 (SURFACE LOCATION)
LATITUDE = 40°27'47.58" (10 463217)

PDOP = 1.4

(TON)