



Corporate Office

1775 Sherman Street, #3000
Denver, Colorado 80203
303.860.5800
www.pdce.com

February 8, 2013

State of Colorado, Oil & Gas Conservation Commission
Attn: Matt Lepore
1120 Lincoln Street, Suite 801
Denver, CO 80203

Re: **Letter to the Director, Rule 318A.e.**
Waste Management 2Q-221
SESW, Section 2 T2N R64W
Weld County, Colorado

Dear Director:

PDC Energy ("PDC") hereby certifies to the Director that PDC holds all minerals in the proposed 160 acre wellbore spacing unit consisting of the W2E2 of Section 2 in T2N R64W; therefore, no 30-day notice is needed to owners in the proposed wellbore spacing unit. This horizontal well location crosses existing unit boundaries and requires the formation of the proposed unit. PDC hereby requests the Director to approve the well.

If you should have any questions or concerns regarding this permit, please contact the undersigned at (303) 860-5800.

Sincerely,

A handwritten signature in blue ink, appearing to read "Liz Lindow", written over the word "Sincerely,".

Liz Lindow
Regulatory Analyst
PDC Energy, Inc.

WELL LOCATION CERTIFICATE

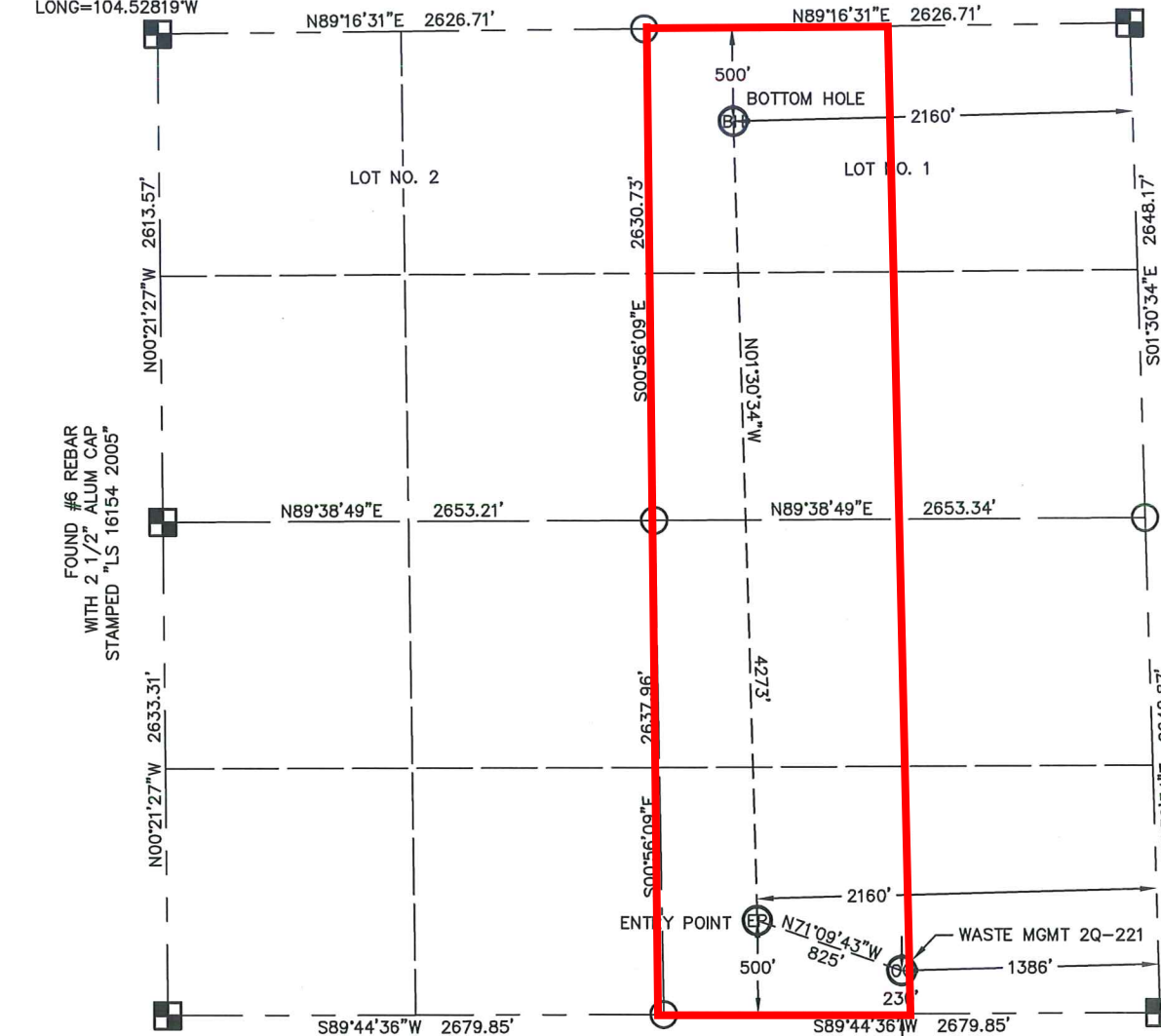
WASTE MGMT 2Q-221

THIS MAP DOES NOT REPRESENT A BOUNDARY SURVEY

SECTION: 2
TOWNSHIP: 2N
RANGE: 64W

FOUND #6 REBAR
WITH 3 1/4" ALUM CAP
STAMPED "LS 16154"
LAT=40.17463°N
LONG=104.52819°W

FOUND 2 3/8" PIPE
WITH 3 1/4" ALUM CAP
STAMPED "LS 2279 1980"
LAT=40.17465°N
LONG=104.50940°W



FOUND #3 REBAR IN CONCRETE
WITH 2" ALUM CAP
STAMPED "LS 13155 1999"
LAT=40.16023°N
LONG=104.52828°W

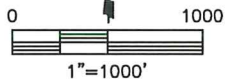
FOUND #6 REBAR
WITH 2 1/2" ALUM CAP
STAMPED "LS 16154 2005"
DID NOT ACCEPT

• FOUND #6 REBAR
WITH 2 1/2" ALUM CAP
STAMPED "LS 19585 1994"
ACCEPTED
LAT=40.16013°N
LONG=104.50911°W
• FOUND #6 REBAR
WITH 3 1/4" ALUM CAP
STAMPED "LS 16154 2005"
DID NOT ACCEPT
• FOUND #4 REBAR
WITH A YELLOW PLASTIC CAP
STAMPED "LS 2682"
DID NOT ACCEPT

In accordance with a request from MAC NEUMANN with PDC ENERGY, INC.

King Surveyors Inc. has determined the surface location of the WASTE MGMT 2Q-221 to be 230' from the SOUTH line and 1386' from the EAST line, the entry point to be 500' from the SOUTH line and 2160' from the EAST line and the bottom hole to be 500' from the NORTH line and 2160' from the EAST line, as measured at right angles, from the section lines of Section 2, Township 2 North, Range 64 West of the Sixth Principal Meridian, County of Weld, State of Colorado.

I hereby state that this Well Location Certificate was prepared by me, or under my direct supervision, that the fieldwork was completed on 12-7-2012, for and on behalf of PDC ENERGY, INC., that this is not a Land Survey Plat or an Improvement Survey Plat, and that it is not to be relied upon for establishment of fence, building, or other future improvement lines.



NOTES:

- 1) Bearings shown are Grid Bearings of the Colorado State Plane Coordinate System, North Zone, North American Datum 1983/2007. The lineal dimensions as contained herein are based upon the "U.S. Survey Foot."
- 2) Ground elevations are based on an observed GPS elevation (NAVD 1988 DATUM).
- 3) NEAREST EXISTING WELL: NO EXISTING WELLS IN THIS SECTION
- 4) IMPROVEMENTS: See LOCATION DRAWING for all visible improvements within 400' of the disturbed area.
- 5) SURFACE USE: PASTURE/PRAIRIE
- 6) FIELD OPERATOR: RON EDWARDS

NOTE

According to Colorado law, you must commence any legal action based upon any defect in this W.L.C. within three years after you discover such defect. In no event, may any action based upon any defect in this survey be commenced more than ten years after the date of the certificate shown hereon. (13-80-105 C.R.S.)

LEGEND

- = FOUND ALIQUOT MONUMENT AS DESCRIBED
- = CALCULATED POSITION
- = SET ALIQUOT MONUMENT AS DESCRIBED

SURFACE LOCATION
LATITUDE: 40.16079°N
LONGITUDE: 104.51408°W
PDOP: 1.8
ELEV: 4895'
1/4, 1/4: SW 1/4 SE 1/4
NEAREST PROPERTY LINE: 1386' EAST

ENTRY POINT
LATITUDE: 40.16154°N
LONGITUDE: 104.51687°W
BOTTOM HOLE
LATITUDE: 40.17327°N
LONGITUDE: 104.51710°W

Michael Chad Dilka - On Behalf Of King Surveyors, Inc.
Colorado Licensed Professional Land Surveyor #38106
1/2/2013

PROJECT#: 2012372