



Corporate Office

1775 Sherman Street, #3000
Denver, Colorado 80203
303.860.5800
www.pdce.com

Department of Natural Resources
Oil and Gas Conservation Commission
The Chancery Building
Attn: Matt Lepore
1120 Lincoln St., Suite 801
Denver, CO 80203

Re: **30 Day Certification Letter – Rule 318Ae**
Thornton 15F-212
NWNW Sec 15-T7N-R67W, 6th PM
Weld County, Colorado

Dear Director,

PDC Energy, Inc. ("PDC") hereby certifies to the Director that a thirty (30-day) notice has been given by certified mail to all owners in the proposed wellbore spacing unit consisting of the N2 of Sec. 15, T7N-R67W, 320 acres. We have not received any objections to such well location or proposed spacing unit, therefore PDC hereby requests the Director to approve the well.

If you should have any questions or concerns regarding this permit, please contact the undersigned at (303) 860-5800.

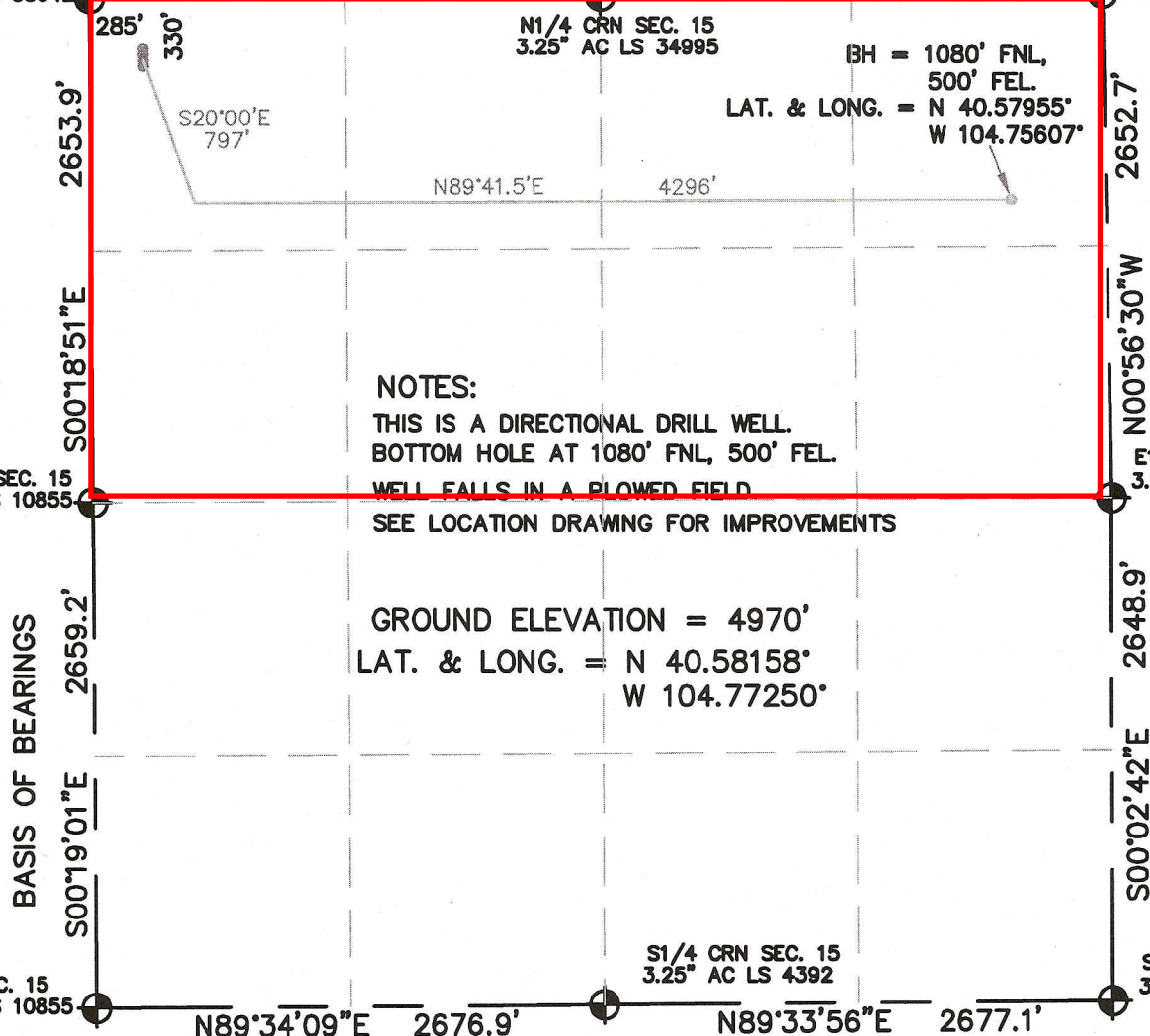
Sincerely,

A handwritten signature in blue ink, appearing to read "Liz Lindow".

Liz Lindow
Regulatory Analyst
PDC Energy

SECTION 15, TOWNSHIP 7 NORTH, RANGE 66 WEST, 6TH P.M.

NE CRN SEC. 15
3.25" AC LS 7242

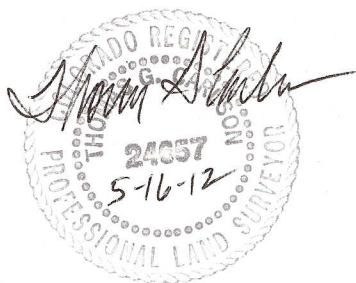


SEE LOCATION DRAWING FOR IMPROVEMENTS

GROUND ELEVATION = 4970'
LAT. & LONG. = N 40.58158°
W 104.77250°

SE CRN SEC. 15
3.25" AC LS 4392

I HEREBY STATE TO PERTOLEUM DEV. CORP. THAT THE SURFACE LOCATION FOR THE WELL THORNTON 15F-212 IS LOCATED 330' FNL & 285' FWL, SEC. 15, T7N, R66W, 6PM.



A north arrow pointing upwards, labeled "NORTH". Below it is a scale bar with markings at 0, 500, and 1000 feet.

SCALE 1" = 1000'

ELEVATION SOURCE = USGS 7.5' QUAD.MAP CONTOURS
NGVD 1929 DATUM.

LAT. & LONG. ARE DIFFERENTIALLY CORRECTED (WGS'84)
USING (DGPS) WITH (PDOP) VALUE OF 1.5.

SHOWN DISTANCES ARE FIELD MEASURED - EXTERIOR SECTION LINES
ARE DRAWN TO SCALE (BEST APPROX. OR FOUND MONUMENT).

DISTANCES TO WELL SHOWN PERPENDICULAR
TO SECTION LINES.

THORNTON 15F-212

WELD COUNTY, CO
NW1/4, SEC. 15, T7N, R66W, 6TH P.M.

SHEET NO.

1 OF 1