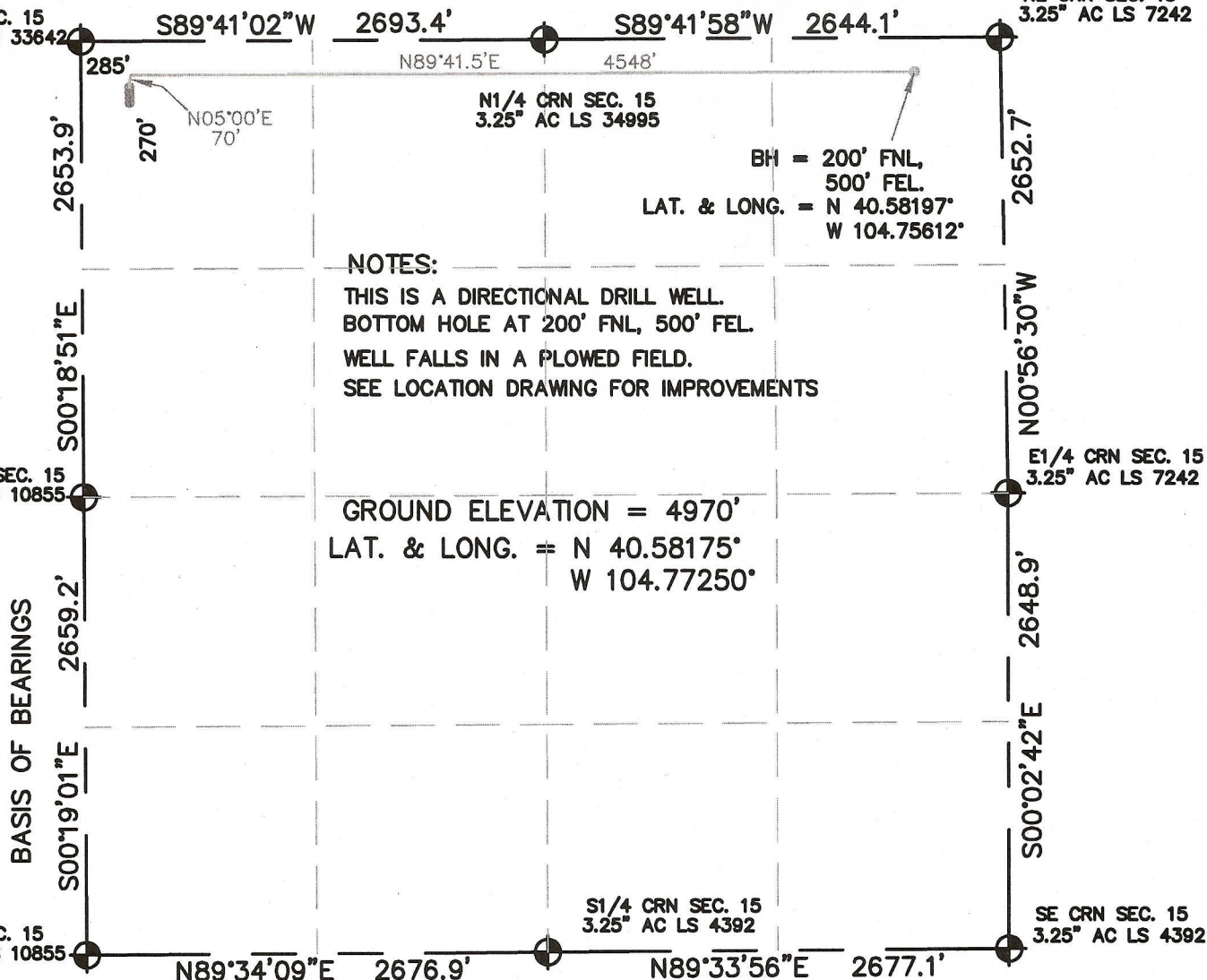


SECTION 15, TOWNSHIP 7 NORTH, RANGE 66 WEST, 6TH P.M.

NW CRN SEC. 15
3.25" AC LS 33642

S89°41'02"W 2693.4' S89°41'58"W 2644.1'

NE CRN SEC. 15
3.25" AC LS 7242



I HEREBY STATE TO PERTOLEUM DEV. CORP. THAT THE SURFACE LOCATION FOR THE WELL THORNTON 15E-232 IS LOCATED 270' FNL & 285' FWL, SEC. 15, T7N, R66W, 6PM.



LEGEND



= FOUND MONUMENT



= PROPOSED WELL



= BOTTOM HOLE



SCALE 1" = 1000'

ELEVATION SOURCE = USGS 7.5' QUAD.MAP CONTOURS
NGVD 1929 DATUM.

LAT. & LONG. ARE DIFFERENTIALLY CORRECTED (WGS'84)
USING (DGPS) WITH (PDOP) VALUE OF 1.7.

THOMAS G. CARLSON, PLS 24657
HORSESHOE SURVEYING, LLC

SHOWN DISTANCES ARE FIELD MEASURED - EXTERIOR SECTION LINES
ARE DRAWN TO SCALE (BEST APPROX. OR FOUND MONUMENT \odot).

THIS IS NOT A MONUMENTED BOUNDARY SURVEY, IT IS ONLY A
DRAWING INTENDED TO DEPICT THE WELL LOCATION TO SECTION LINES.

DISTANCES TO WELL SHOWN PERPENDICULAR
TO SECTION LINES.

PREPARED BY:

HORSESHOE SURVEYING, LLC
PO BOX 150458
LAKEWOOD, CO 80215
(720)872-0196

WELL NAME:

THORNTON 15E-232

DRAWING DATE:

5-16-12

LOCATION:

WELD COUNTY, CO
NW1/4, SEC. 15, T7N, R66W, 6TH P.M.

FIELD DATE:

4-23-12

BY:

TGC

CHKD:

JOB NO.

SHEET NO.

1 OF 1