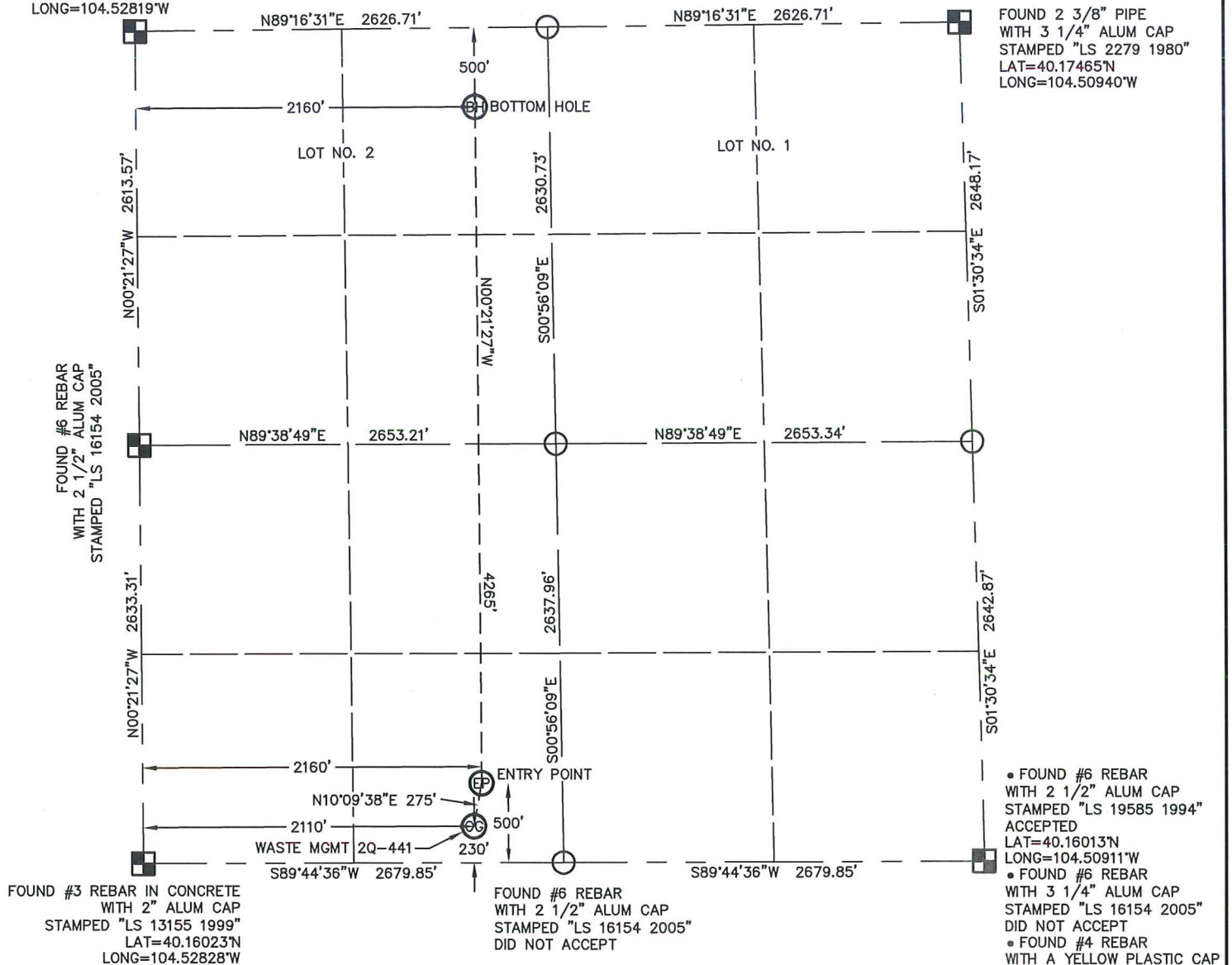


## WELL LOCATION CERTIFICATE

WASTE MGMT 2Q-441

THIS MAP DOES NOT REPRESENT A BOUNDARY SURVEY

SECTION: 2  
TOWNSHIP: 2N  
RANGE: 64WFOUND 2 3/8" PIPE  
WITH 3 1/4" ALUM CAP  
STAMPED "LS 2279 1980"  
LAT=40.17465°N  
LONG=104.50940°WFOUND #6 REBAR  
WITH 3 1/4" ALUM CAP  
STAMPED "LS 16154"  
LAT=40.17463°N  
LONG=104.52819°WIn accordance with a request from MAC NEUMANN with PDC ENERGY, INC.King Surveyors Inc. has determined the surface location of the WASTE MGMT 2Q-441 to be 230' from the SOUTH line and 2110' from the WEST line, the entry point to be 500' from the SOUTH line and 2160' from the WEST line and the bottom hole to be 500' from the NORTH line and 2160' from the WEST line, as measured at right angles, from the section lines of Section 2, Township 2 North, Range 64 West of the Sixth Principal Meridian, County of Weld, State of Colorado.I hereby state that this Well Location Certificate was prepared by me, or under my direct supervision, that the fieldwork was completed on 12-7-2012, for and on behalf of PDC ENERGY, INC., that this is not a Land Survey Plat or an Improvement Survey Plat, and that it is not to be relied upon for establishment of fence, building, or other future improvement lines.SURFACE LOCATION  
LATITUDE: 40.16082°N  
LONGITUDE: 104.52073°W  
PDOP: 1.8  
ELEV: 4933'  
1/4, 1/4: SE 1/4 SW 1/4  
NEAREST PROPERTY LINE: ±2900' SOUTHENTRY POINT  
LATITUDE: 40.16156°N  
LONGITUDE: 104.52055°W  
BOTTOM HOLE  
LATITUDE: 40.17326°N  
LONGITUDE: 104.52047°W

## NOTES:

- 1) Bearings shown are Grid Bearings of the Colorado State Plane Coordinate System, North Zone, North American Datum 1983/2007. The lineal dimensions as contained herein are based upon the "U.S. Survey Foot."
- 2) Ground elevations are based on an observed GPS elevation (NAVD 1988 DATUM).
- 3) NEAREST EXISTING WELL: NO EXISTING WELLS IN THIS SECTION
- 4) IMPROVEMENTS: See LOCATION DRAWING for all visible improvements within 400' of the disturbed area.
- 5) SURFACE USE: PASTURE/PRAIRIE
- 6) FIELD OPERATOR: RON EDWARDS

## NOTE

According to Colorado law, you must commence any legal action based upon any defect in this W.L.C. within three years after you discover such defect. In no event, may any action based upon any defect in this survey be commenced more than ten years after the date of the certificate shown hereon. (13-80-105 C.R.S.)

## LEGEND

- = FOUND ALIQUOT MONUMENT AS DESCRIBED
- = CALCULATED POSITION
- = SET ALIQUOT MONUMENT AS DESCRIBED

Michael Chad Dilkha - On Behalf Of King Surveyors, Inc.  
Colorado Licensed Professional Land Surveyor #38106

1/2/2013

PROJECT#: 2012372

