

ConocoPhillips Company

CONSTRUCTION LAYOUT FOR

TEBO #33-1H
SECTION 33, T4S, R64W, 6th P.M.
900' FSL 310' FWL

FIGURE #1

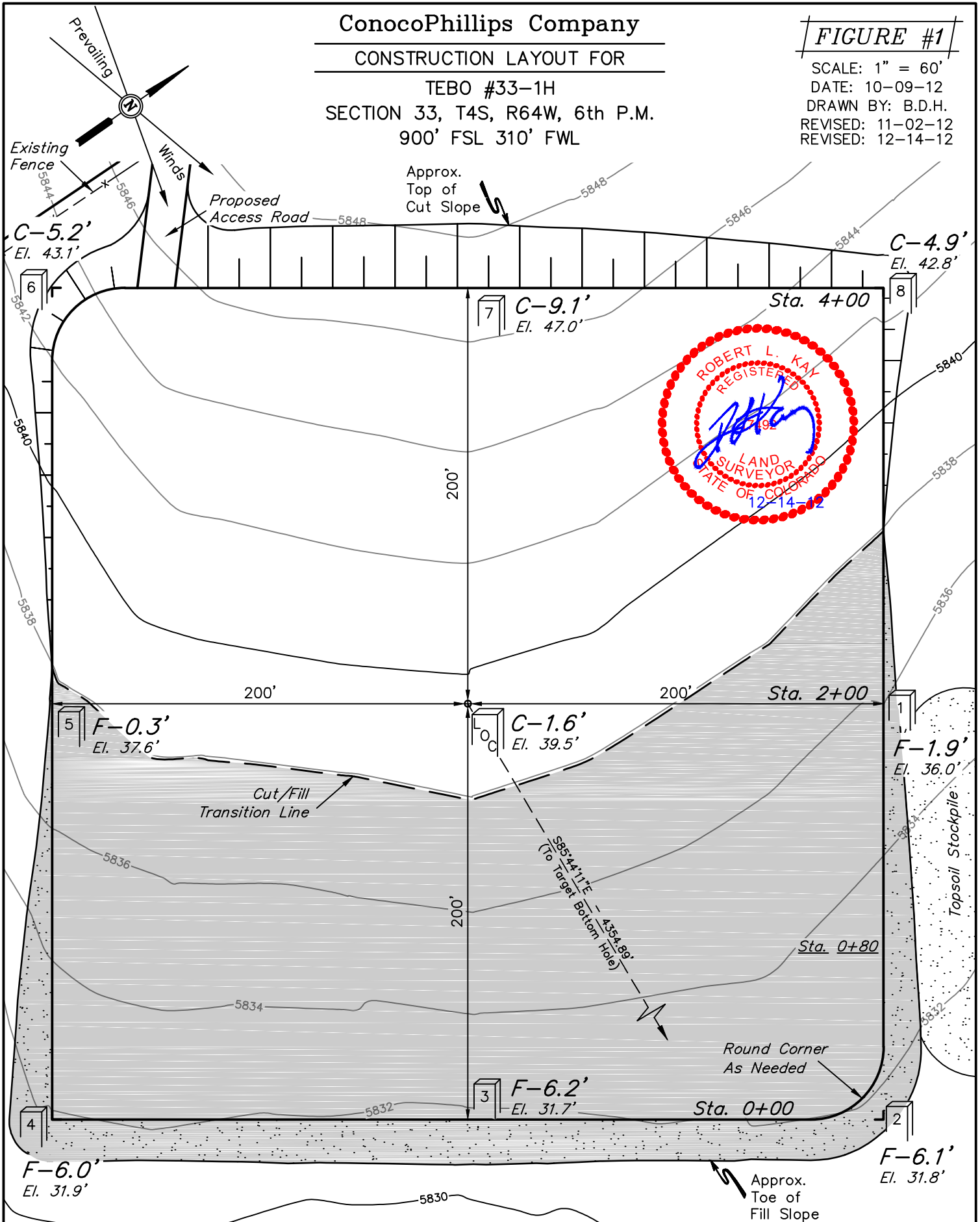
SCALE: 1" = 60'

DATE: 10-09-12

DRAWN BY: B.D.H.

REVISED: 11-02-12

REVISED: 12-14-12



Elev. Ungraded Ground At Loc. Stake = 5839.5'
FINISHED GRADE ELEV. AT LOC. STAKE = 5837.9'

UINTAH ENGINEERING & LAND SURVEYING
85 So. 200 East * Vernal, Utah 84078 * (435) 789-1017

ConocoPhillips Company

FIGURE #2

CONSTRUCTION LAYOUT CROSS SECTIONS FOR

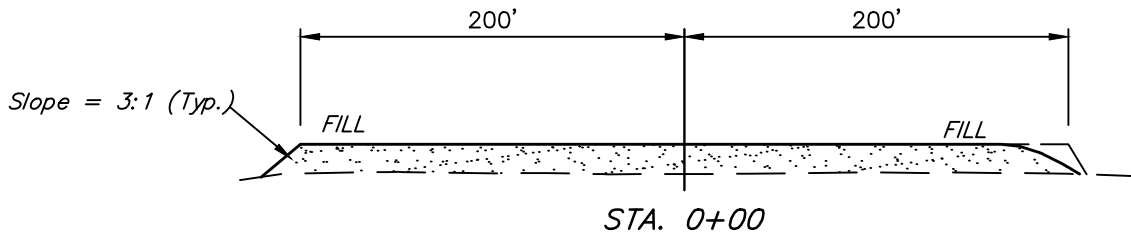
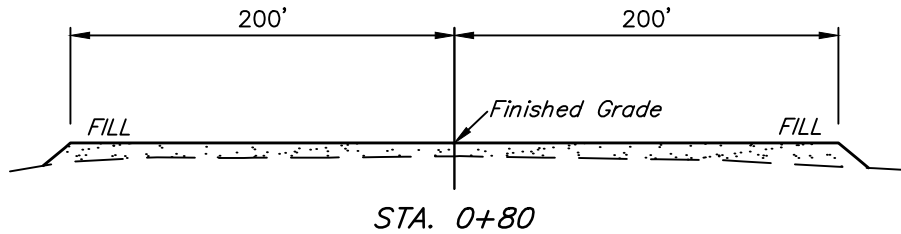
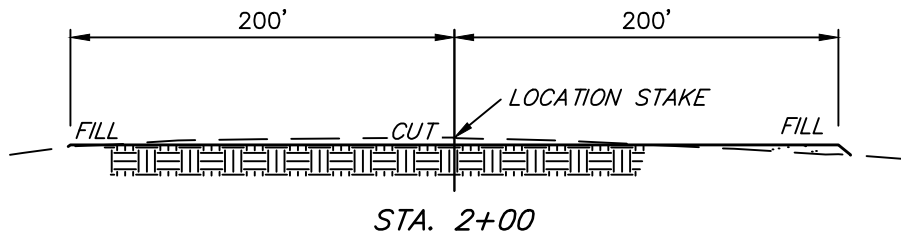
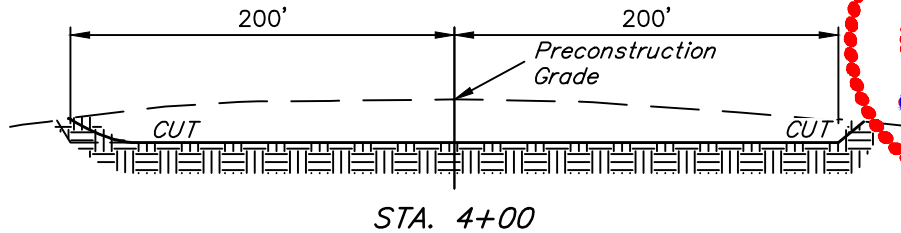
TEBO #33-1H

SECTION 33, T4S, R64W, 6th P.M.

900' FSL 310' FWL

1" = 40'
X-Section
Scale
1" = 100'

DATE: 10-09-12
DRAWN BY: B.D.H.
REVISED: 01-28-13



NOTE:

Topsoil should not be Stripped Below Finished Grade on Substructure Area.

APPROXIMATE ACREAGES

WELL SITE DISTURBANCE = ± 4.218 ACRES
ACCESS ROAD DISTURBANCE = ± 2.986 ACRES
TOTAL = ± 7.204 ACRES

* NOTE:
FILL QUANTITY INCLUDES 5% FOR COMPACTION

APPROXIMATE YARDAGES

(6") Topsoil Stripping = 3,440 Cu. Yds.
Remaining Location = 10,960 Cu. Yds.
TOTAL CUT = 14,400 CU. YDS.
FILL = 10,960 CU. YDS.

EXCESS MATERIAL = 3,440 Cu. Yds.
Topsoil = 3,400 Cu. Yds.

EXCESS UNBALANCE = 0 Cu. Yds.
(After Interim Rehabilitation)

UINTAH ENGINEERING & LAND SURVEYING
85 So. 200 East * Vernal, Utah 84078 * (435) 789-1017