

ConocoPhillips Company
TEBO #33-1H
 LOCATED IN ARAPAHOE COUNTY, COLORADO
 SECTION 33, T4S, R64W, 6th P.M.

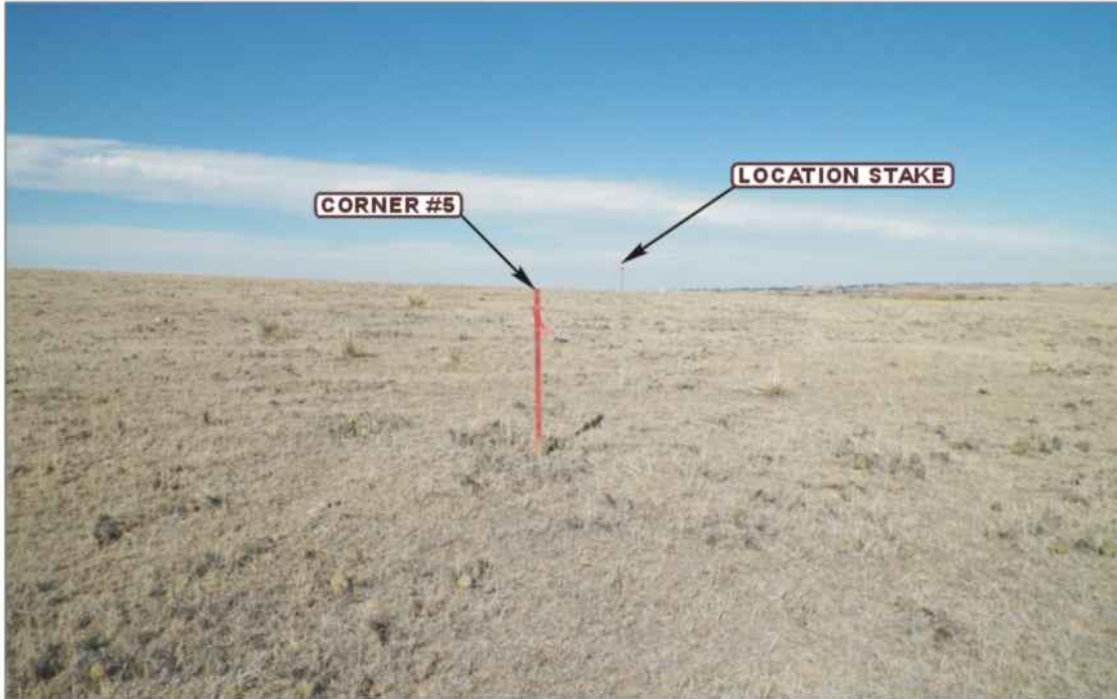


PHOTO: VIEW FROM CORNER #5 TO LOCATION STAKE

CAMERA ANGLE: NORTHEASTERLY



PHOTO: VIEW FROM BEGINNING OF PROPOSED ACCESS

CAMERA ANGLE: NORTHEASTERLY



UELS Uintah Engineering & Land Surveying
 85 South 200 East Vernal, Utah 84078
 (435) 789-1017 * FAX (435) 789-1813

LOCATION PHOTOS	10	11	12	PHOTO P1
	MONTH	DAY	YEAR	
TAKEN BY: D.L.S.	DRAWN BY: J.L.H.		REVISED: 00-00-00	

ConocoPhillips Company
TEBO #33-1H
 LOCATED IN ARAPAHOE COUNTY, COLORADO
 SECTION 33, T4S, R64W, 6th P.M.



PHOTO: VIEW OF LOCATION STAKE

CAMERA ANGLE: NORTHERLY



PHOTO: VIEW OF LOCATION STAKE

CAMERA ANGLE: EASTERLY



U **E** **L** **S** Uintah Engineering & Land Surveying
 85 South 200 East Vernal, Utah 84078
 (435) 789-1017 * FAX (435) 789-1813

LOCATION PHOTOS	10	11	12	PHOTO P2
	MONTH	DAY	YEAR	
TAKEN BY: D.L.S.	DRAWN BY: J.L.H.		REVISED: 00-00-00	

ConocoPhillips Company
TEBO #33-1H
 LOCATED IN ARAPAHOE COUNTY, COLORADO
 SECTION 33, T4S, R64W, 6th P.M.



PHOTO: VIEW OF LOCATION STAKE

CAMERA ANGLE: SOUTHERLY



PHOTO: VIEW OF LOCATION STAKE

CAMERA ANGLE: WESTERLY



UELS Uintah Engineering & Land Surveying
 85 South 200 East Vernal, Utah 84078
 (435) 789-1017 * FAX (435) 789-1813

LOCATION PHOTOS	10	11	12	PHOTO P3
	MONTH	DAY	YEAR	
TAKEN BY: D.L.S.	DRAWN BY: J.L.H.		REVISED: 00-00-00	