



# Weatherford®

6 3/4 in. & 4 3/4 in.  
WeatherfordM/LWD™  
Spectral Gamma Ray & Resistivity  
5 in. MEASURED DEPTH  
RECORDED DATA

Company: Anadarko  
Well: Reigle 28N-4HZ  
Field: Wattenburg  
Rig: Xtreme 23  
County: Weld

COMPANY		Anadarko	
WELL		Reigle 28N-4HZ	
FIELD		Wattenburg	
RIG		Xtreme 23	
COUNTY		Weld	
API #		05-123-36138	
STATE		Colorado	

Location		Latitude: 40.162028° N	X =3,232,556 ft	Mag Decl: 8.64°
		Longitude: 104.667910° W	Y =1,302,961 ft	Mag Dip: 66.80°
Other Services: Temperature and Directional				

Permanent Datum:		<u>Mean Sea Level</u>				K.B.    Top Drive	
Log Measured From:		<u>Drill Floor</u>	Elev: <u>4872 ft</u>		above perm. datum		G.L.    4858 ft
Depth Reference:		<u>Drillers Tally</u>		Total Depth: <u>11469 ft</u>		D.F.    4872 ft	
Depth Logged: 6473 ft		to 11469 ft		Runs: 3		W.D.    Land	
Date Logged: 26-Dec-12		to 30-Dec-12		Spud Date: 23-Dec-12			
Borehole Record				Casing Record			
Hole Size		From	To	Size	Weight	From	To
12.250 in.		0 ft	839 ft	9.625 in.	53.5 lb/ft	Surface	839 ft
8.750 in.		839 ft	7364 ft	7.000 in.	26 lb/ft	Surface	7364 ft
6.125 in.		7364 ft	11469 ft				

Borehole Deviation Record			Mud Record			
Hole Size	Min. Inc.	Max. Inc.	Type	Weight	From	To
8.750 in.	0.35°	84.95°	WBM	9.70 - 10.20 ppg	6525 ft	7364 ft
6.125 in.	87.47°	91.85°	WBM	9.30 ppg	7364 ft	11469 ft

**All interpretations of log data are opinions based on inferences from electrical or other measurements. Weatherford International does not guarantee the accuracy or correctness of any interpretation or recommendation and we shall not be liable or responsible for any loss, cost, damages or expenses incurred or sustained by anyone resulting from any interpretation or recommendation made by any of our employees or agents.**

RUN SUMMARY							
M/LWD Run Number		2	3				
Bit Size	in.	8.750	6.125				
Bit Type		PDC	PDC				
Bit TFA	sq.in.	0.982	0.982				
Bit Start Depth	ft	6525	7364				
Bit End Depth	ft	7364	11469				
Top Log Interval	ft	6473	7386				
Bottom Log Interval	ft	7364	11469				
Begin Log Time	hrs	1:56	15:52				
Begin Log Date	DD-MMM-YY	26-Dec-12	29-Dec-12				
End Log Time	hrs	4:20	21:27				
End Log Date	DD-MMM-YY	27-Dec-12	30-Dec-12				
Drill or Wipe		Drill	Drill				
Flow Rate	gal/min	582	300				
Max AV / CV @ MWD	ft/min	445 / 332	491 / 364				
Min Inc @ Depth	deg @ ft	1.38 @ 6518	87.47 @ 10309				
Max Inc @ Depth	deg @ ft	84.95 @ 7364	91.85 @ 9797				
MUD DATA							
Depth	ft	7364	11469				
Fluid Type		WBM	WBM				
Mud Weight	ppg	10.20	9.30				
Plastic Viscosity	cP	10	10				
Solids / Sand	%	9.70 / 0.30	5.20 / 0.30				
NaCl Equiv. Chlorides	ppm	2392	2475				
pH		9.0	8.8				
Oil:Water Ratio	% Vol	1.1 : 98.9	1.6 : 98.4				
Rm @ Temperature	ohm-m @ deg F	N/A	1.80 @ 73				
Rmc @ Temperature	ohm-m @ deg F	N/A	1.75 @ 73				
Rmf @ Temperature	ohm-m @ deg F	N/A	1.20 @ 73				
KCl	% Vol	0	0				
Client Representative		R. McPeters	R. McPeters				
WeatherfordM/LWD Engineer		D. Palmer	S. Christy				

## EQUIPMENT SUMMARY

M/LWD Run Number	2	3			
HEL Serial Number	CP20738PDYBR-T01	NW22474PDBB4.75			
MFR Serial Number	N/A	NW22475RBBK4.75			
SAGR Serial Number	N/A	NW22477JB4.75			
IDS Serial Number	N/A	NW22514BI4.75			
<b>Sensor to Bit Offsets / Acquisition Rates</b>					
Directional	ft / sec	58.73 / RT	55.46 / RT		
Gamma Ray	ft / sec	44.52 / 10	40.92 / 5		
Resistivity	ft / sec	N/A	76.54 / 5		
<b>Other Information</b>					
Total BHA Length	ft	2863.95	6183.69		
BHA Assembly Type		Steerable	Steerable		
Stabilizer Location	ft	N/A	36.09		
Stabilizer Location	ft	N/A	111.00		
Run Circulating Time	hr	29.21	35.15		
Run Drilling Time	hr	15.15	15.63		

## MUD SUMMARY

Date and Time	Run	Bit Depth	Mud Weight	% K	Rm @ Temp	Rmf @ Temp	Rmc @ Temp	BHCT
27 Dec 12 @ 20:00	02	7364 ft	10.20 ppg	0	N/A	N/A	N/A	172 F
29 Dec 12 @ 20:00	03	11469 ft	9.30 ppg	0	1.80 @ 73 F	1.20 @ 73 F	1.75 @ 73 F	221 F

## M/LWD RUN REMARKS

**Run Number:** 2 :: REAL TIME DATA LOG

**WFT Services Provided:**

Real Time Logging: Gamma Ray and Temperature.

Directional Services: On demand Inclination and Azimuth.

**Borehole and Environmental Correction:**

Collar O.D.: 6.750 in.

**Gamma Ray:** Collar O.D., collar I.D. and K1 factor.

Collar I.D.: 3.250 in.

K1 Factor: 3.164

KCl Concentration: 0%

**Run Number:** 3 :: RECORDED DATA LOG

**WFT Services Provided:**

Recorded and Real Time Logging: Gamma Ray, Deep, Medium and Shallow Resistivity, and Temperature.

Directional Services: On demand Inclination and Azimuth.

**Borehole and Environmental Correction:**

Hole Size: 6.125 in.

**Gamma Ray:** Corrected for mud weight, hole size and KCl concentration.

Mud Weight: 9.30 ppg

**Resistivities:** Corrected for borehole temperature, hole size, drilling fluid resistivity  
and dielectric correction.

Borehole Temperature: 212° F

Drilling Fluid Resistivity: 0.656 ohm-m

KCl Concentration: 0%

## M/LWD LOG COMMENTS

**Comment No. 2-1**

Start of MWD Drilling Run 02

Weatherford International provided 6 3/4 in. Directional, Gamma Ray and Temperature for Run 02.

Run 02 started formation drilling December 26, 2012 at 01:56 at 6525 MD / 6478 TVD. Weatherford International logged the 8.750 in. borehole.

The WBM at the start of drilling was 10.20 ppg.

**Comment No. 2-2**

End of MWD Drilling Run 02

Run 02 ended drilling formation December 27, 2012 at 04:20 at 7364 MD / 7043 TVD.

The WBM at the end of drilling was 10.20 ppg.

**Comment No. 3-1**

RECORDED DATA LOG

Start of LWD Drilling Run 03

Weatherford International provided 4 3/4 in. Directional, Resistivity, Gamma Ray, and Temperature for Run 03.

Run 03 started formation drilling December 29, 2012 at 15:52 at 7364 MD / 7043 TVD. Weatherford International logged the 6.125 in. borehole.

The WBM at the start of drilling was 9.30 ppg.

**Comment No. 3-2**

End of LWD Drilling Run 03

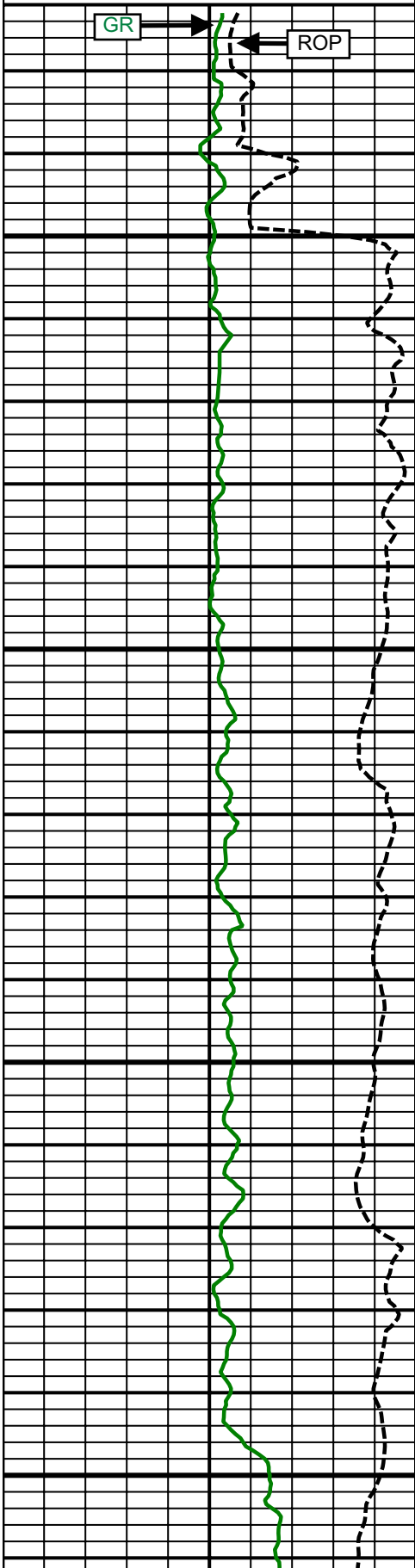
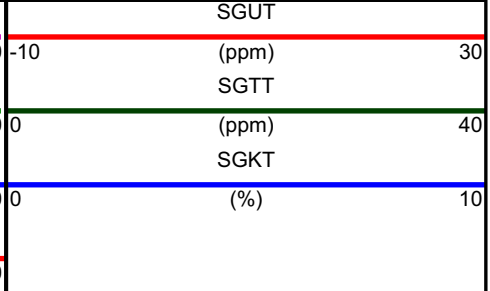
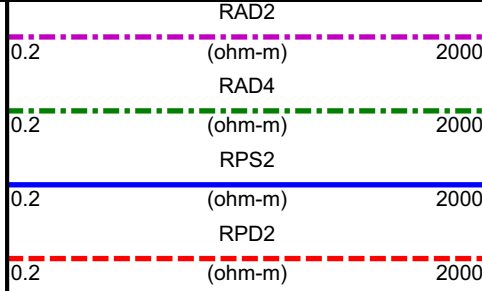
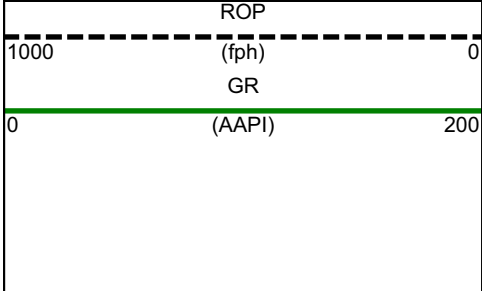
Run 03 ended drilling formation December 30, 2012 at 21:27 at 11469 MD / 7051 TVD.

The WBM at the end of drilling was 9.30 ppg.

CURVE SPECIFICATIONS				
CURVE TYPE	MNEMONIC	UNITS	COMMENTS	CORRECTIONS
Rate of Penetration	ROP	fph	Rate of Penetration 3.0 ft window 0.5 ft Exponential Smoothing	None
Gamma Ray	GR	AAPI	Gamma Ray 3.0 ft window 0.5 ft Exponential Smoothing	See M/LWD Run Remarks
Deep Phase Resistivity	RPD2	ohm-m	2 MHz Deep Phase Resistivity 3.0 ft window 0.5 ft Exponential Smoothing	
Deep Attenuation Resistivity	RAD2	ohm-m	2 MHz Deep Attenuation Resistivity 3.0 ft window 0.5 ft Exponential Smoothing	
Deep Attenuation Resistivity	RAD4	ohm-m	400 kHz Deep Attenuation Resistivity 3.0 ft window 0.5 ft Exponential Smoothing	
Shallow Phase Resistivity	RPS2	ohm-m	2 MHz Shallow Phase Resistivity 3.0 ft window 0.5 ft Exponential Smoothing	
Potassium Total	SGKT	%	Potassium Concentration 3.0 ft window 0.5 ft Two Stage Smoothing	
Uranium Total	SGUT	ppm	Uranium Concentration 3.0 ft window 0.5 ft Two Stage Smoothing	
Thorium Total	SGTT	ppm	Thorium Concentration 3.0 ft window 0.5 ft Two Stage Smoothing	

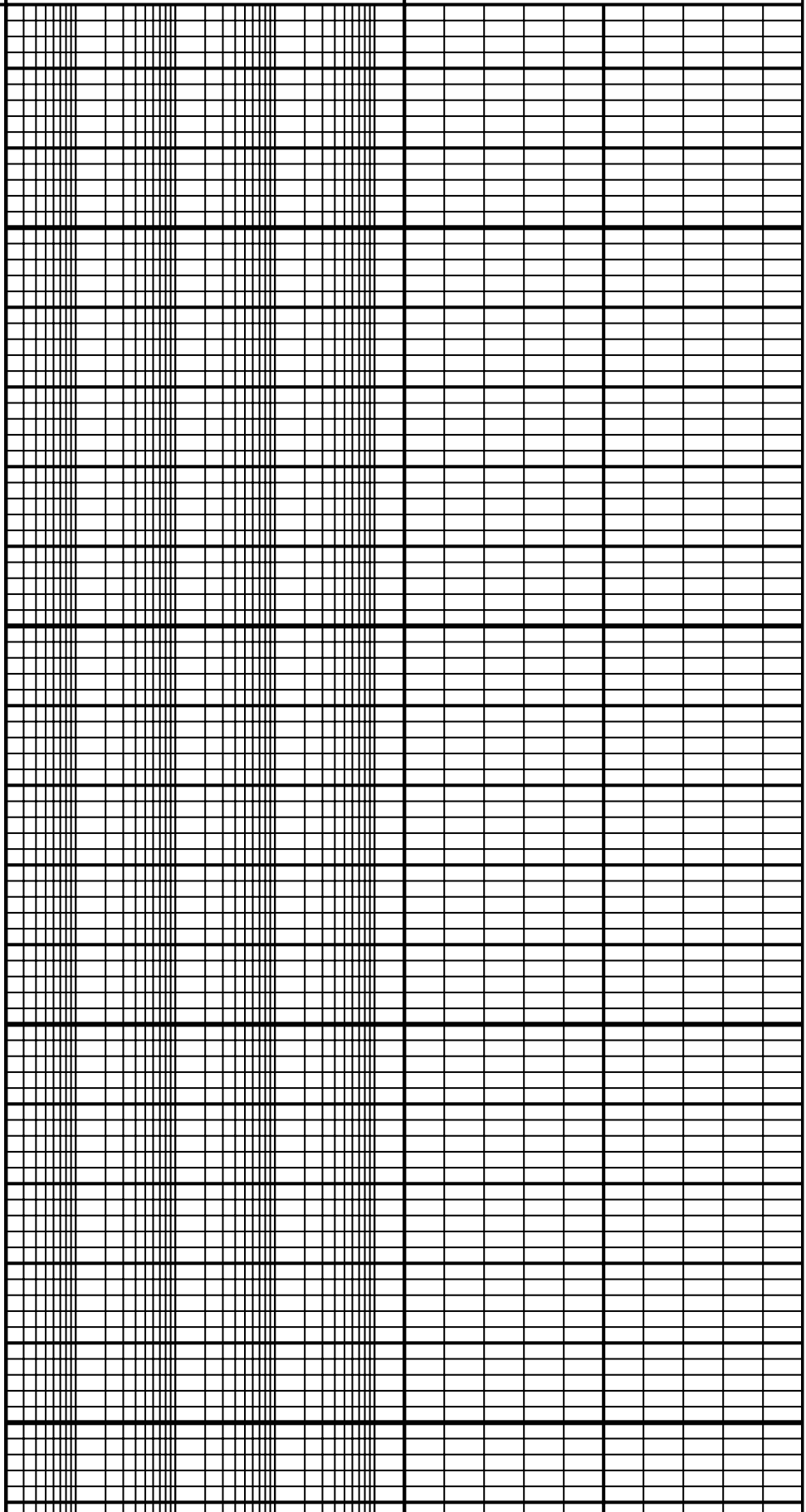


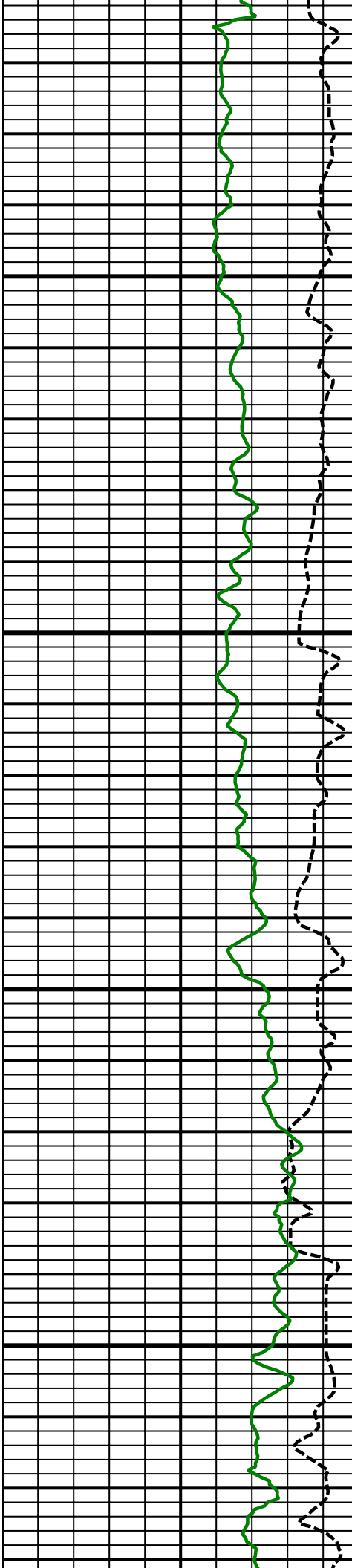
**5 Inch - Measured Depth**



6500 MD

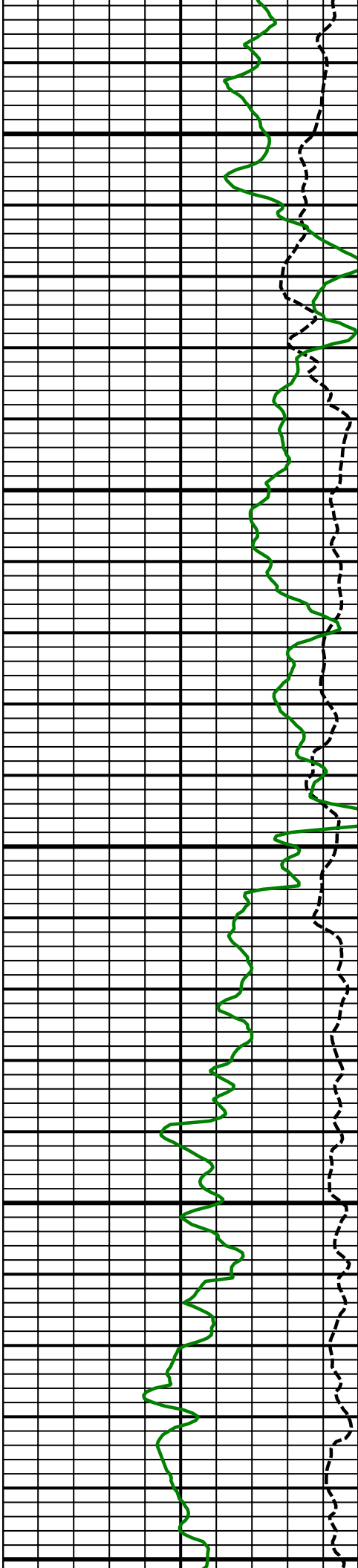
6600 MD





6700  
MD

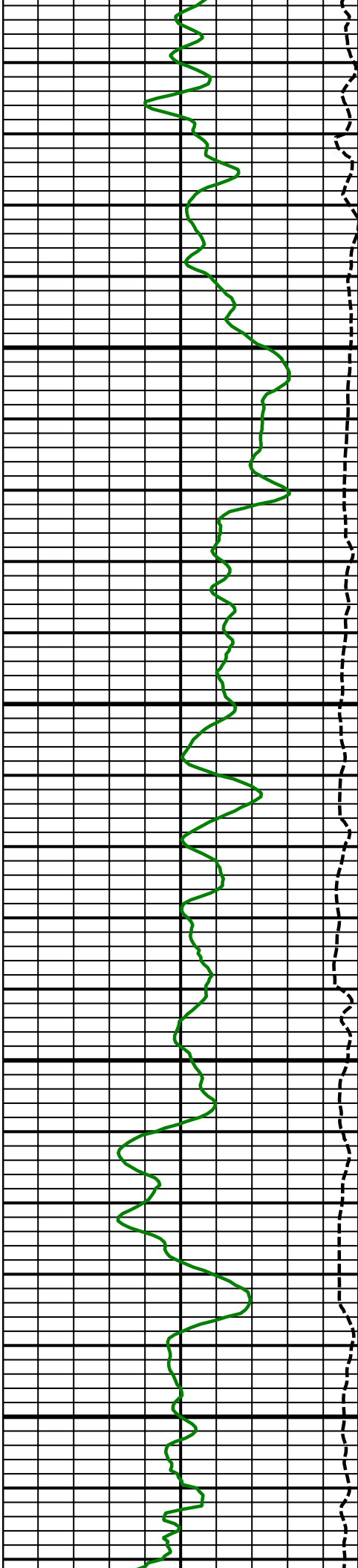
6800  
MD



6900  
MD

7000  
MD

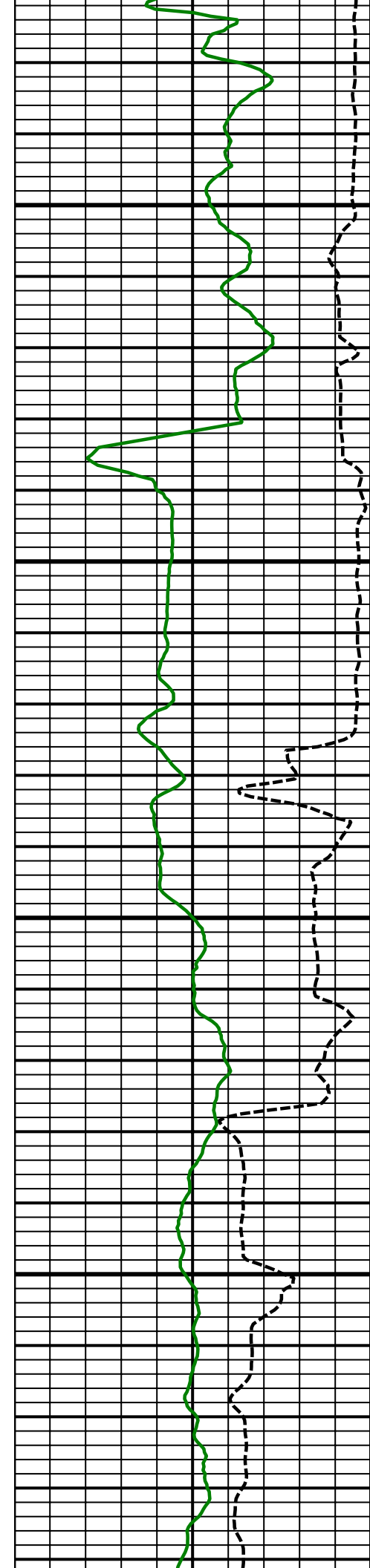
7100



MD

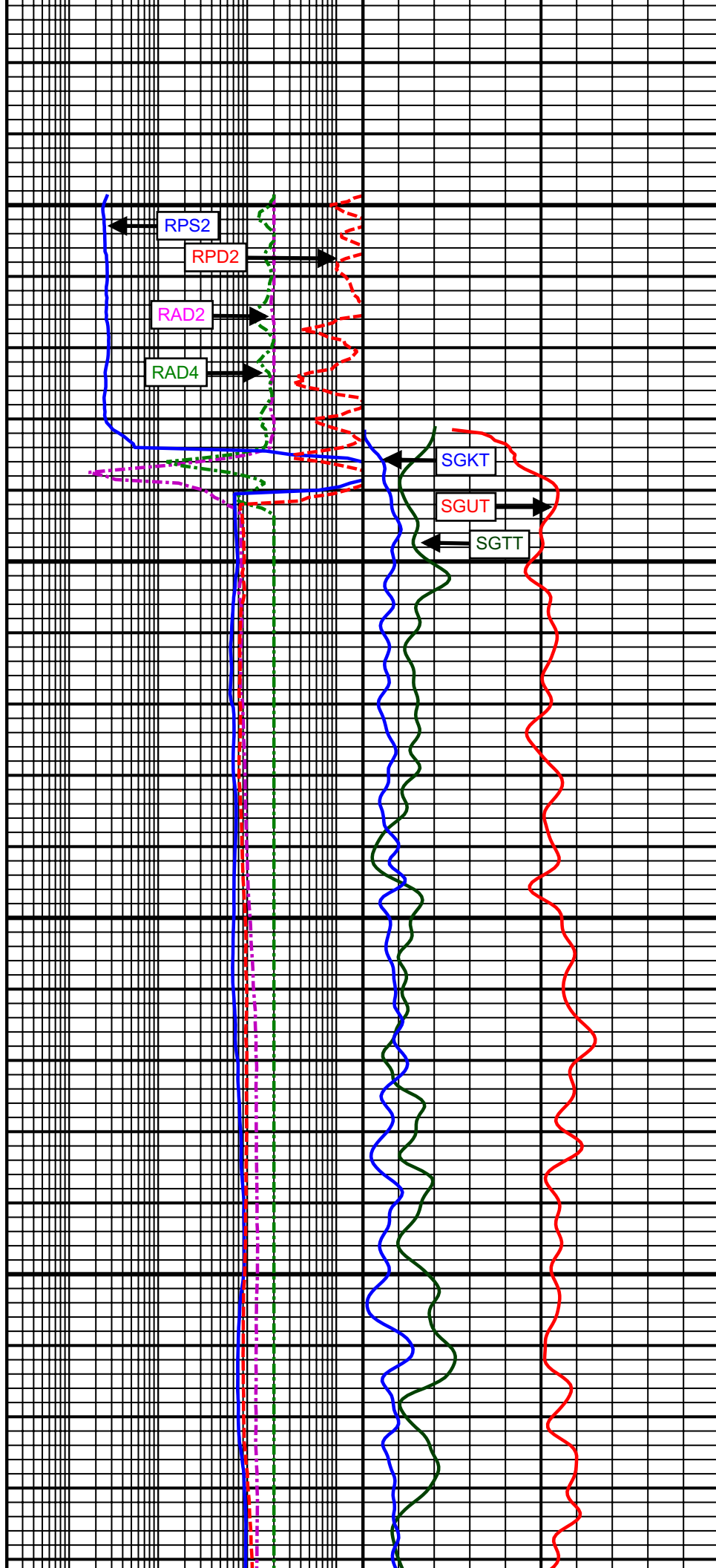
7200  
MD

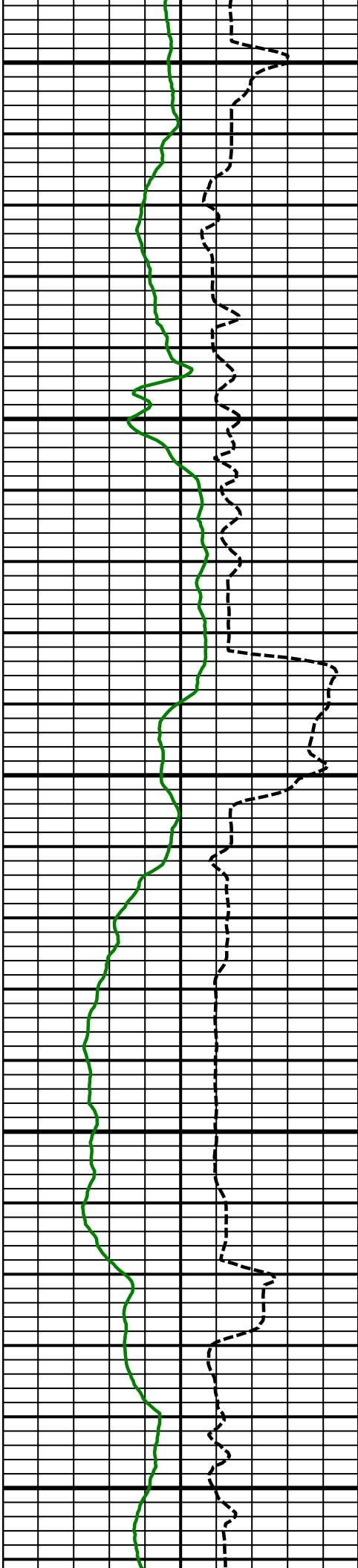
7300  
MD



7400  
MD

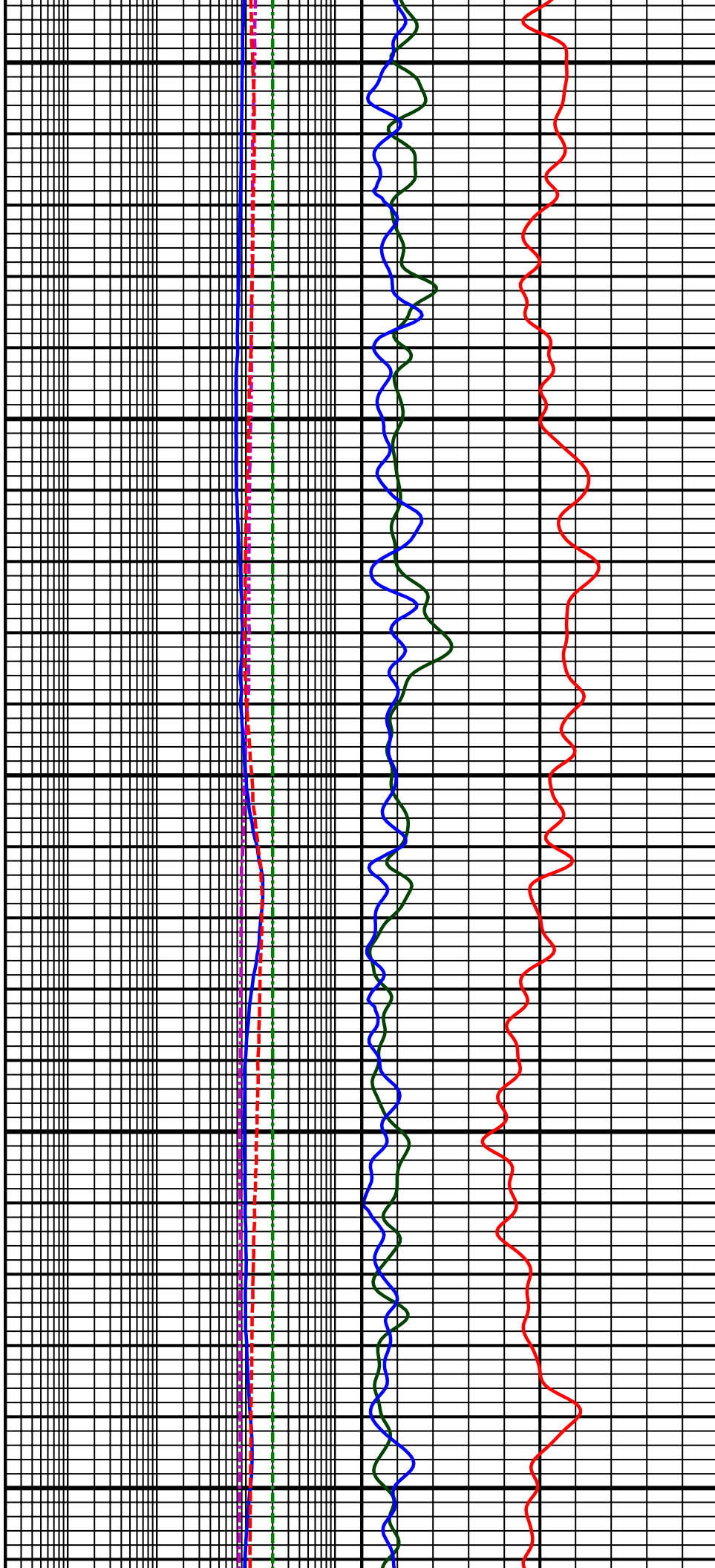
7500  
MD

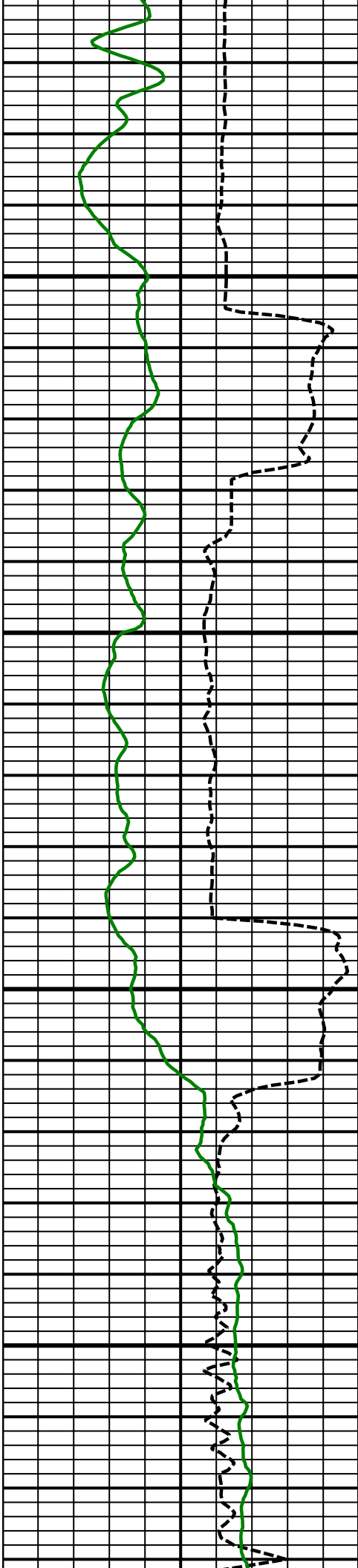




7600  
MD

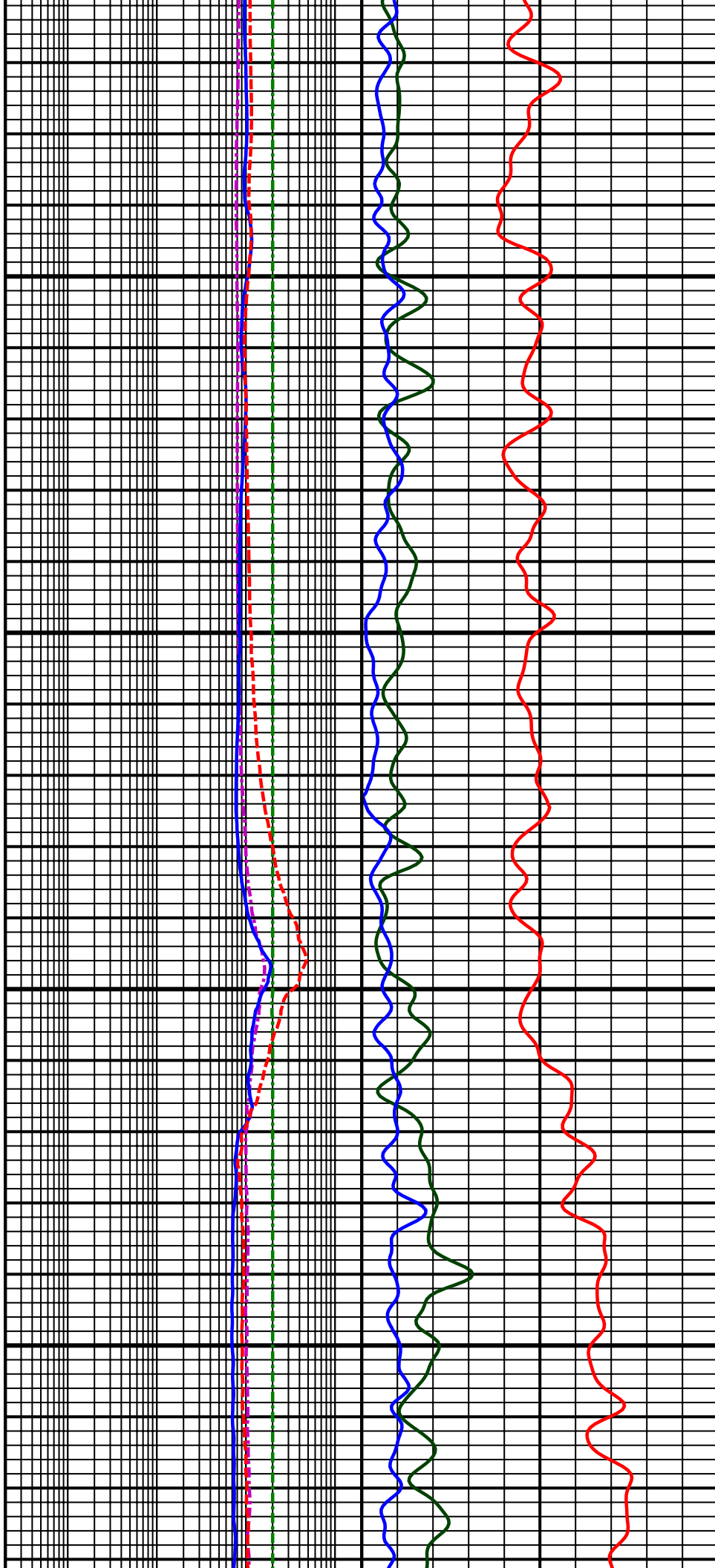
7700  
MD



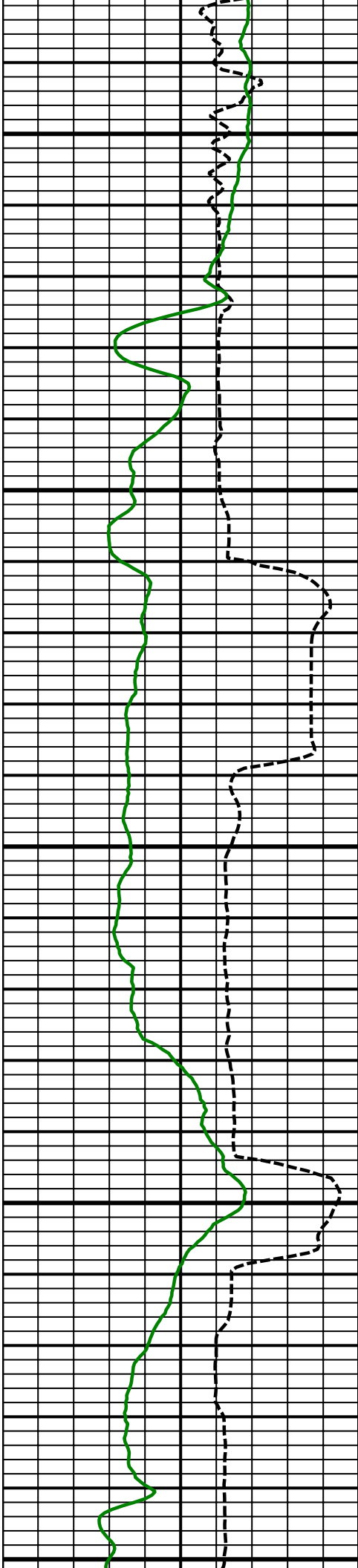


7800  
MD

7900  
MD



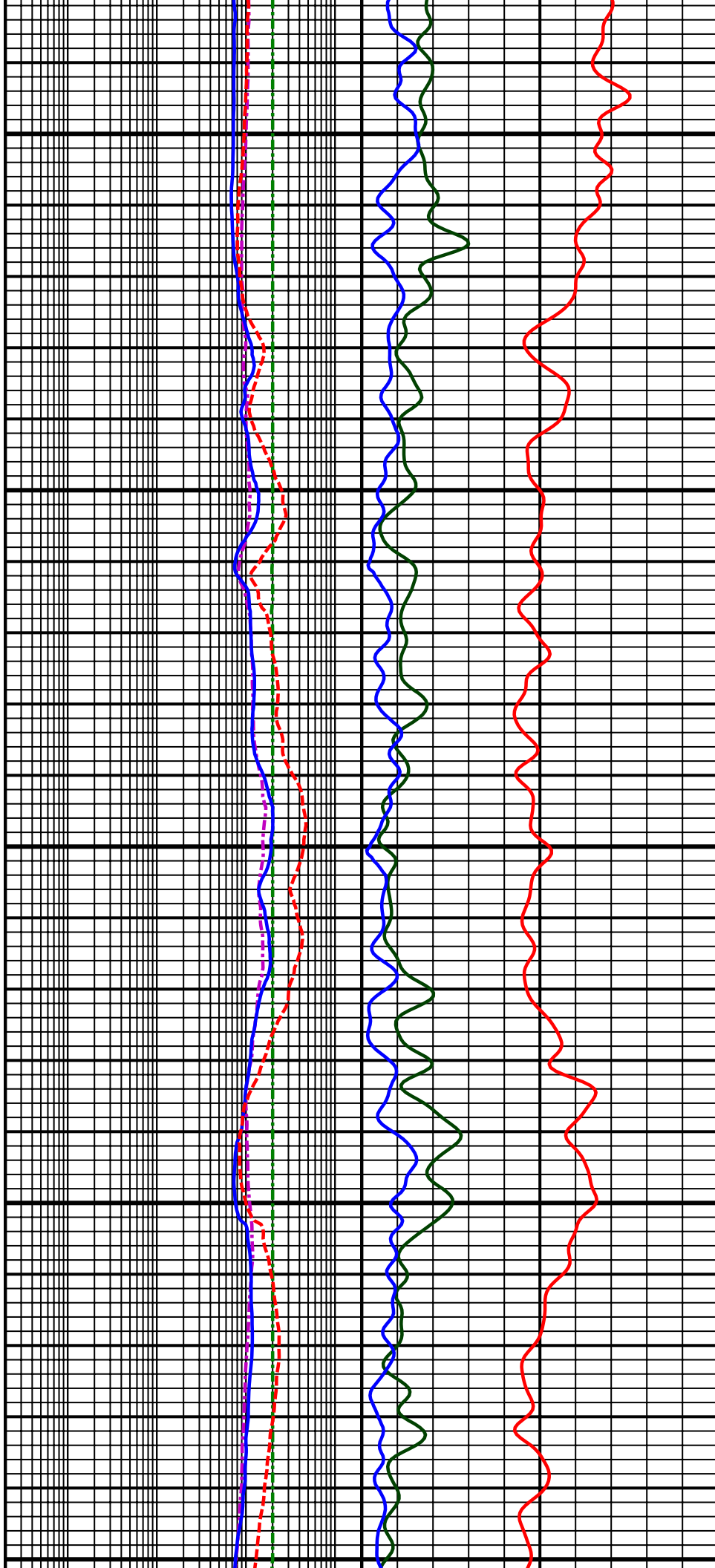


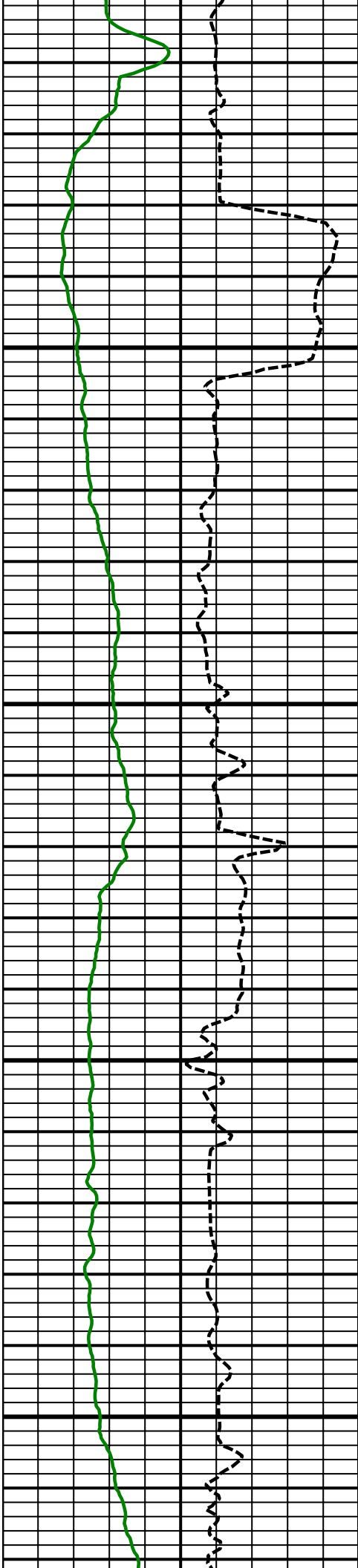


8000  
MD

8100  
MD

8200

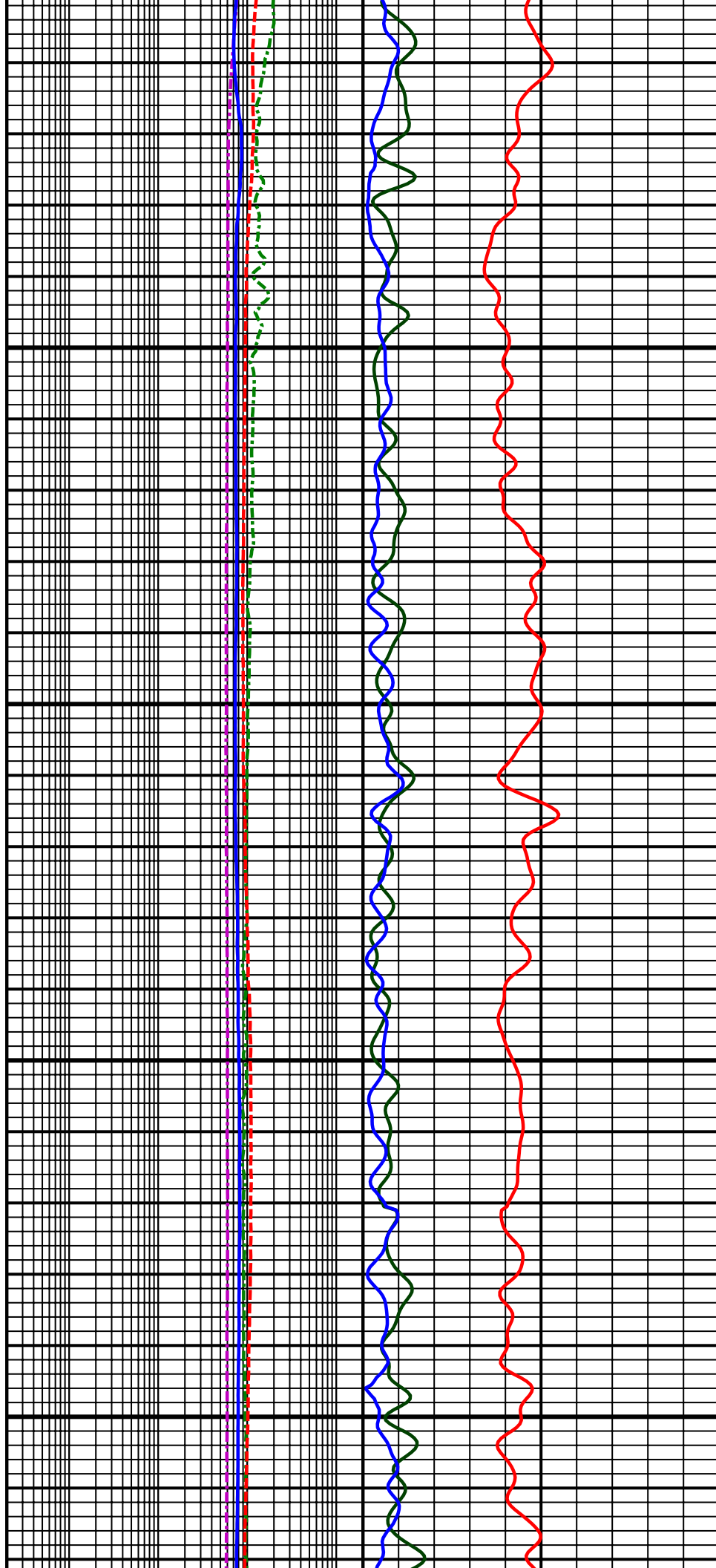


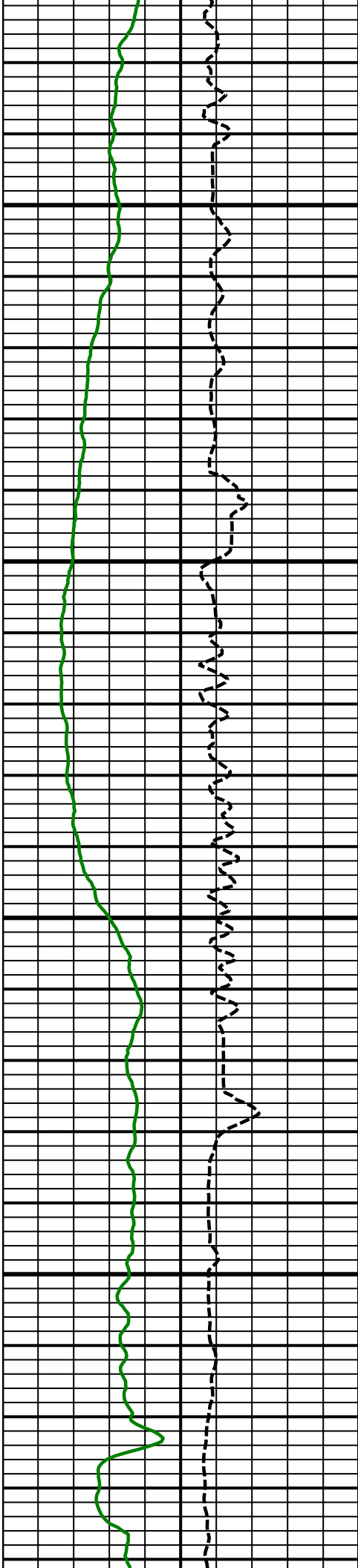


MD

8300  
MD

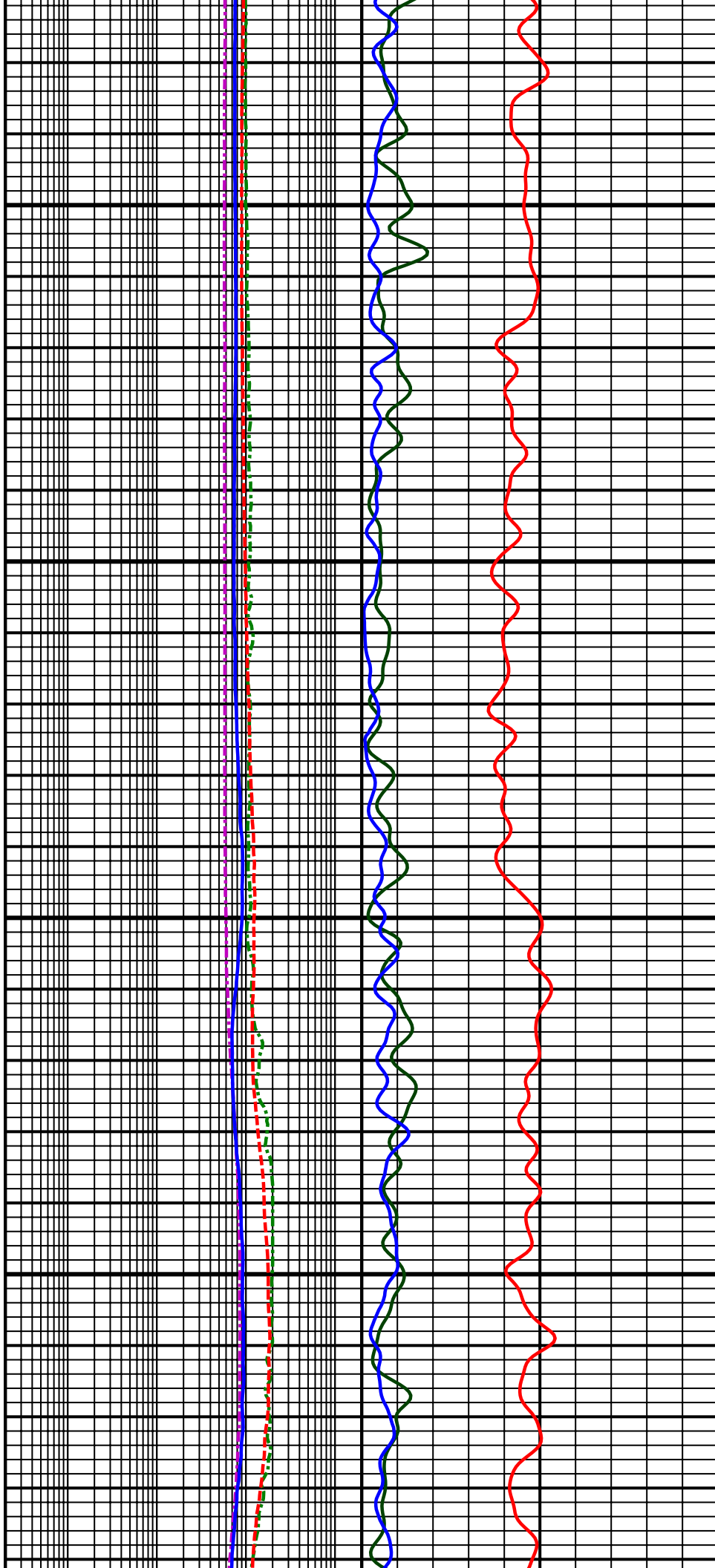
8400  
MD

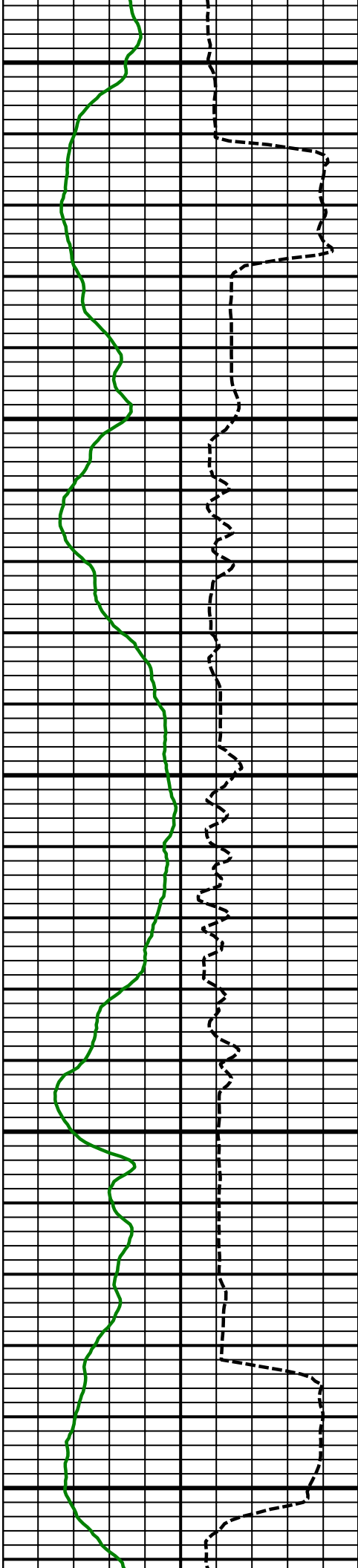




8500  
MD

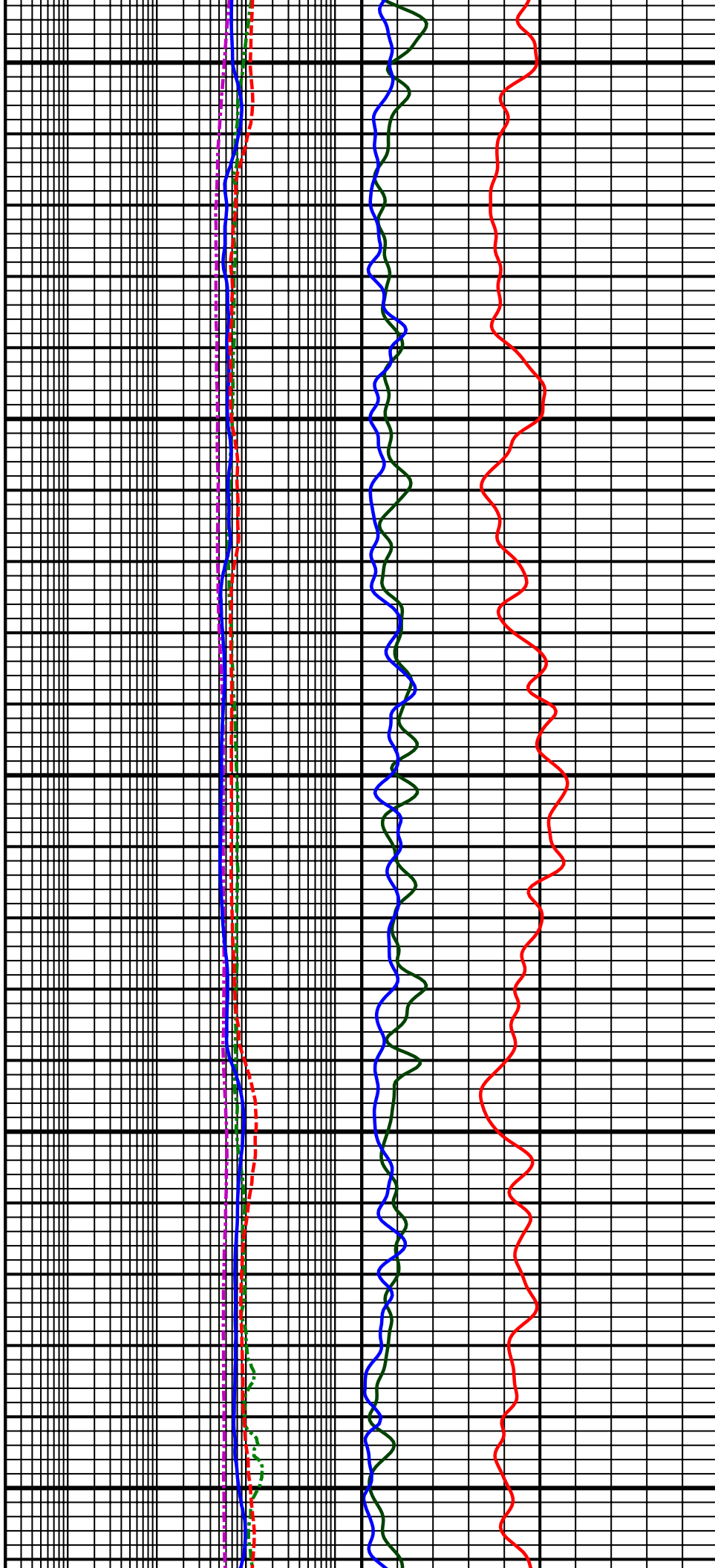
8600  
MD

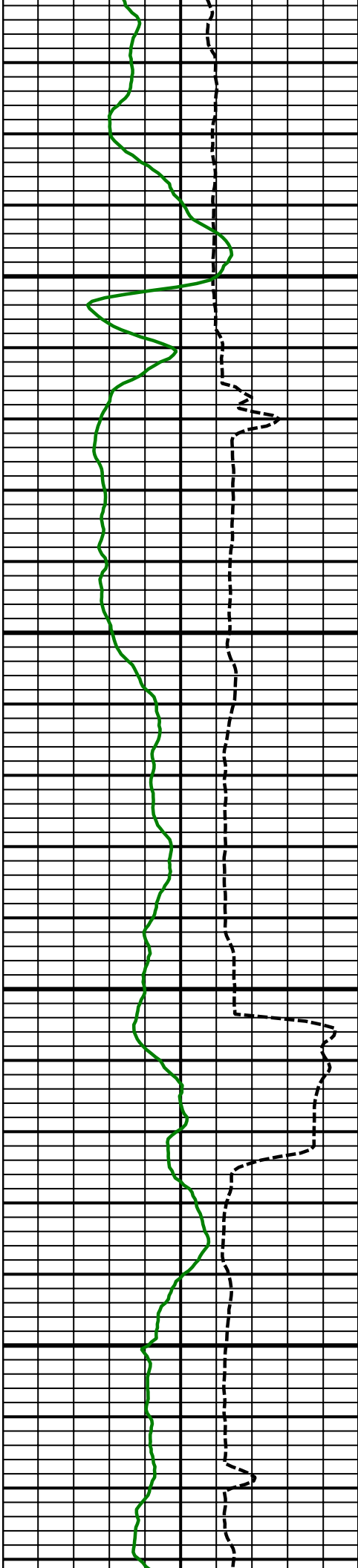




8700  
MD

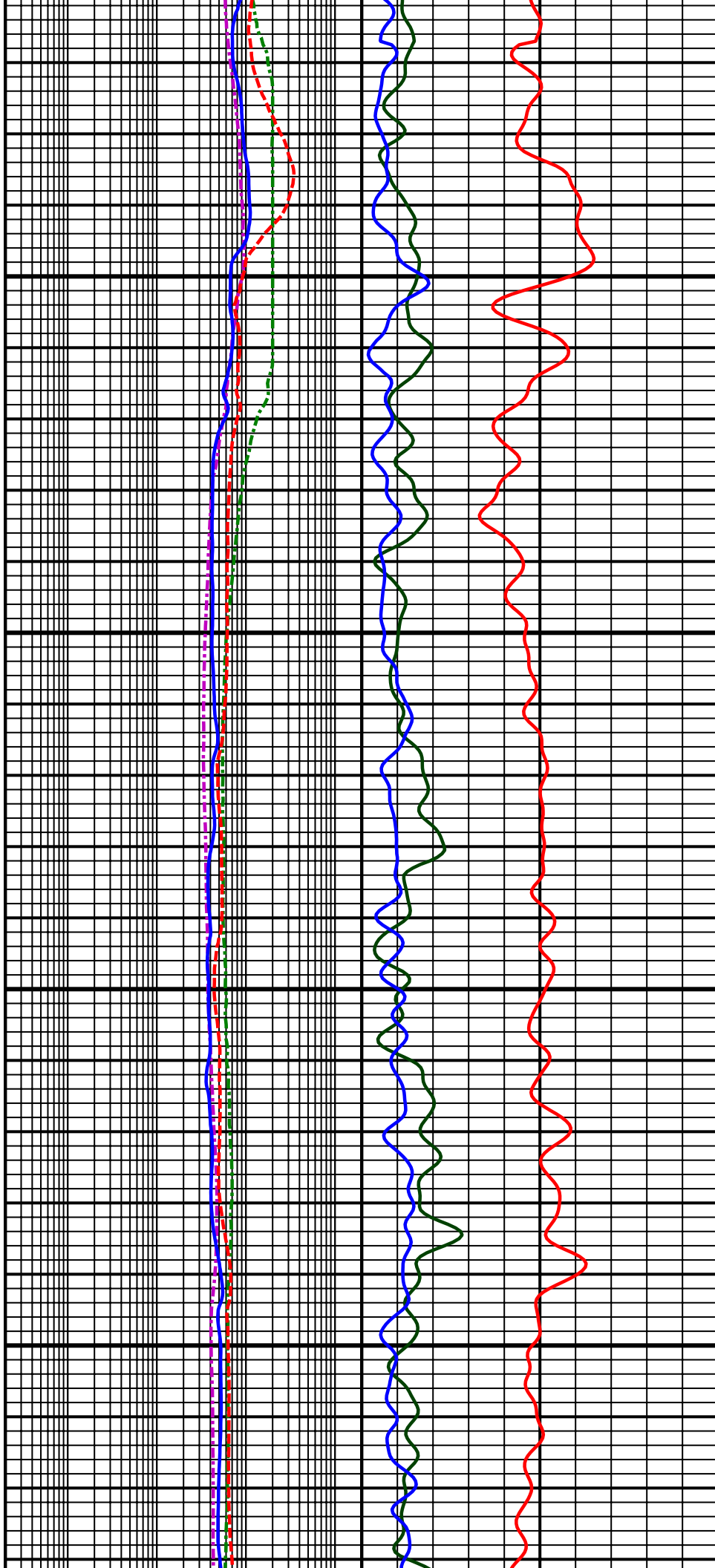
8800  
MD

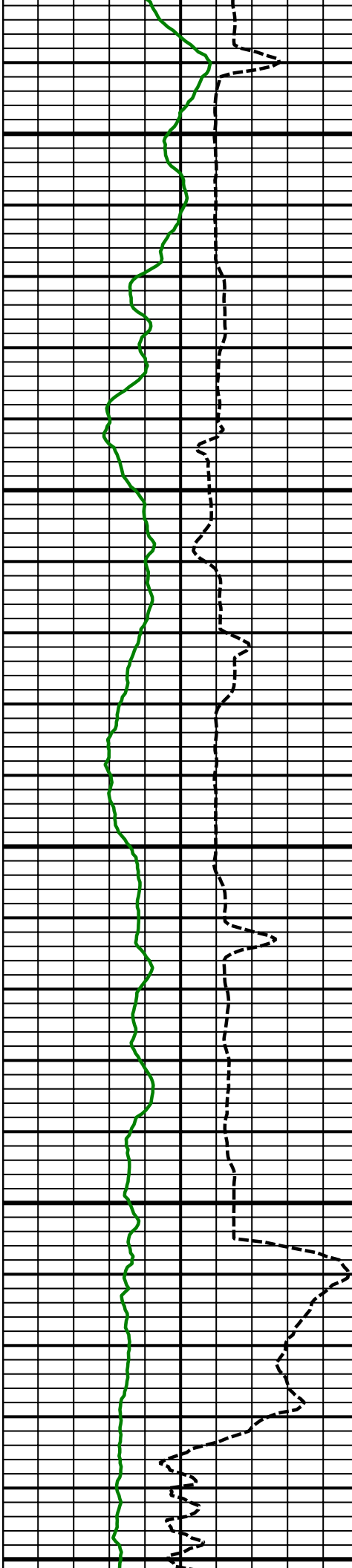




8900  
MD

9000  
MD

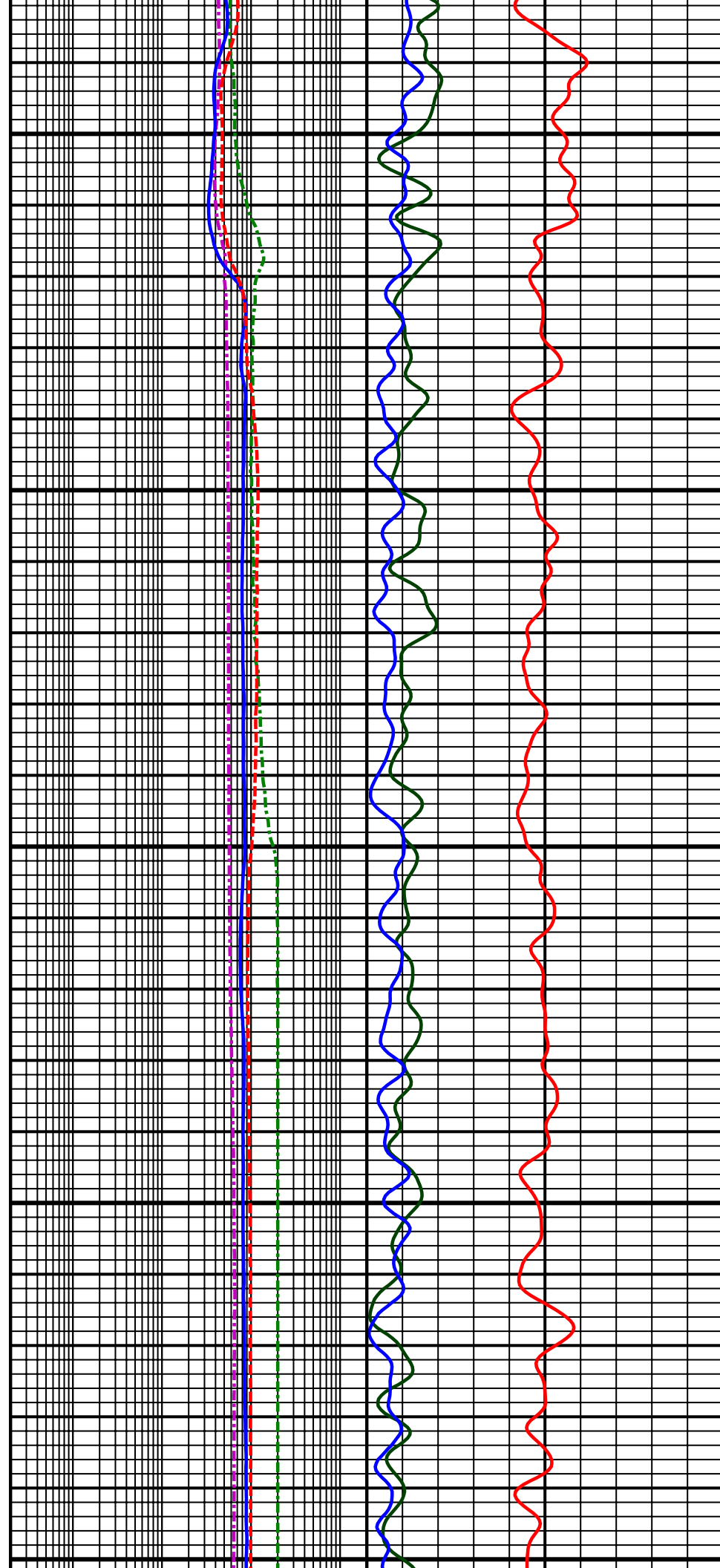


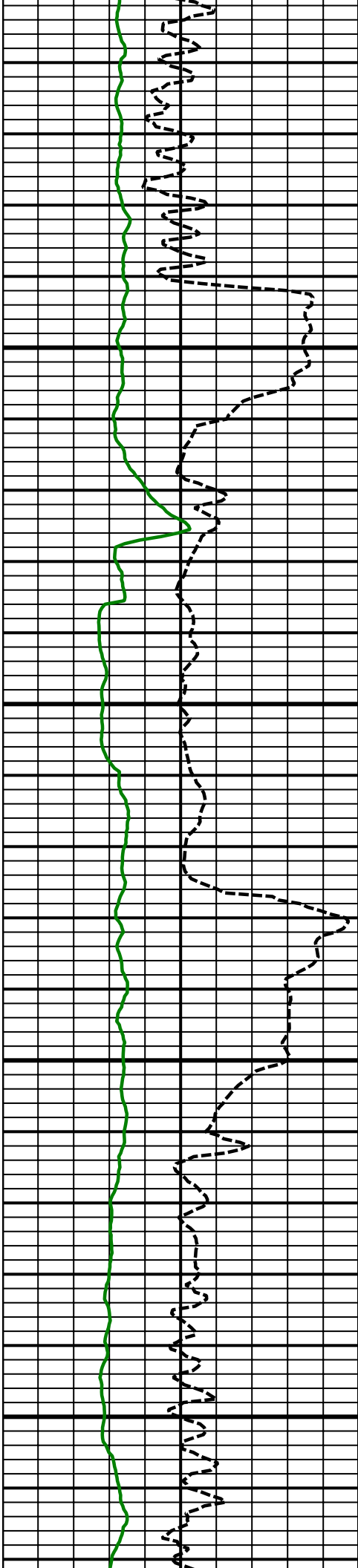


9100  
MD

9200  
MD

9300

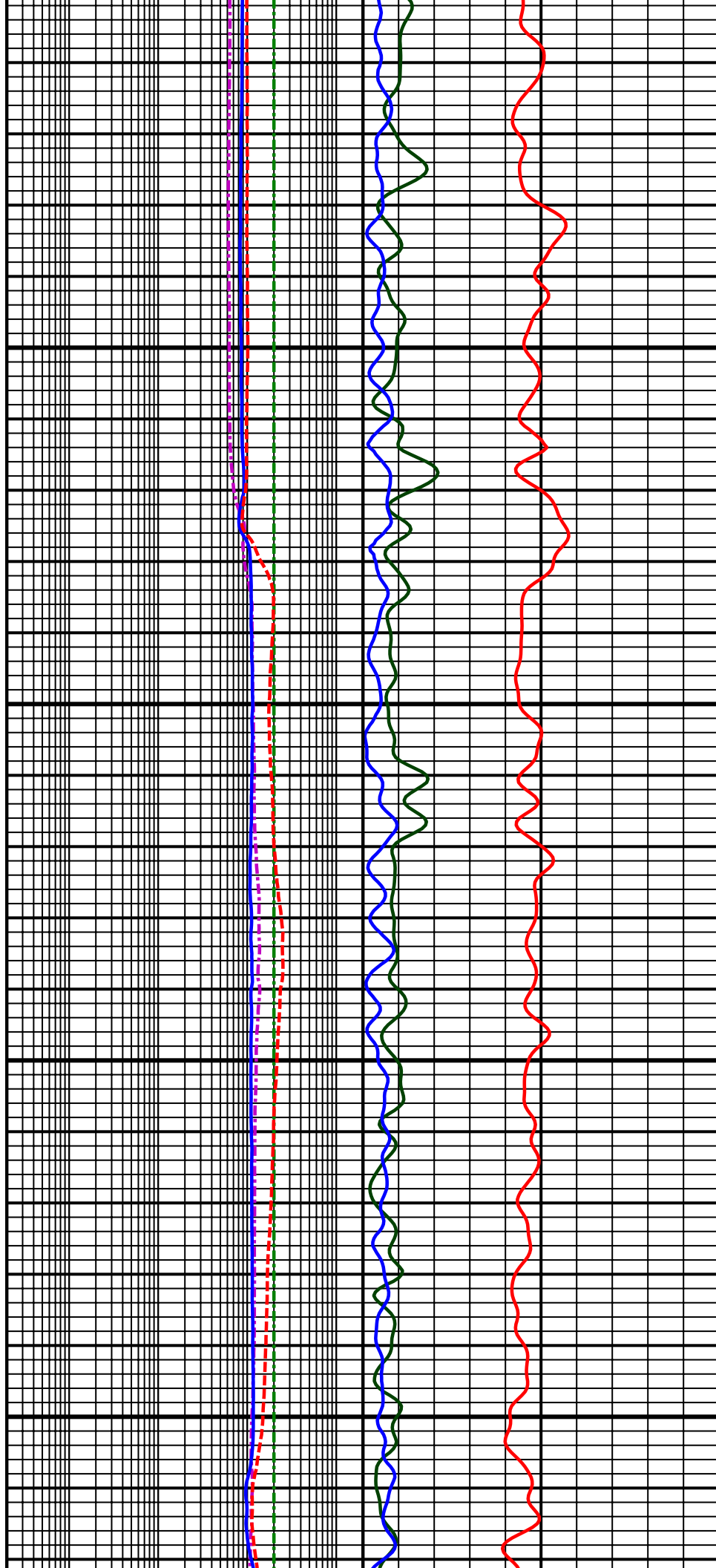


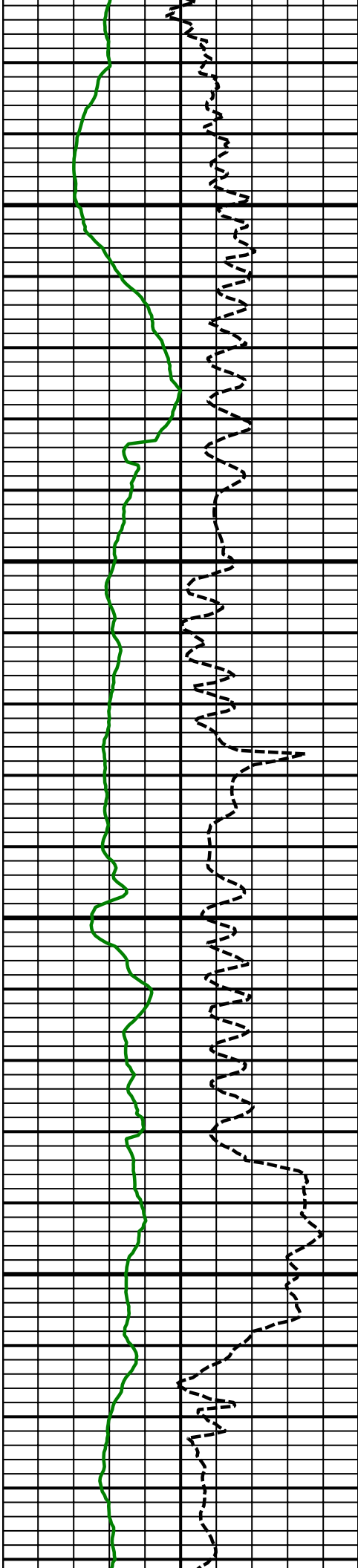


MD

9400  
MD

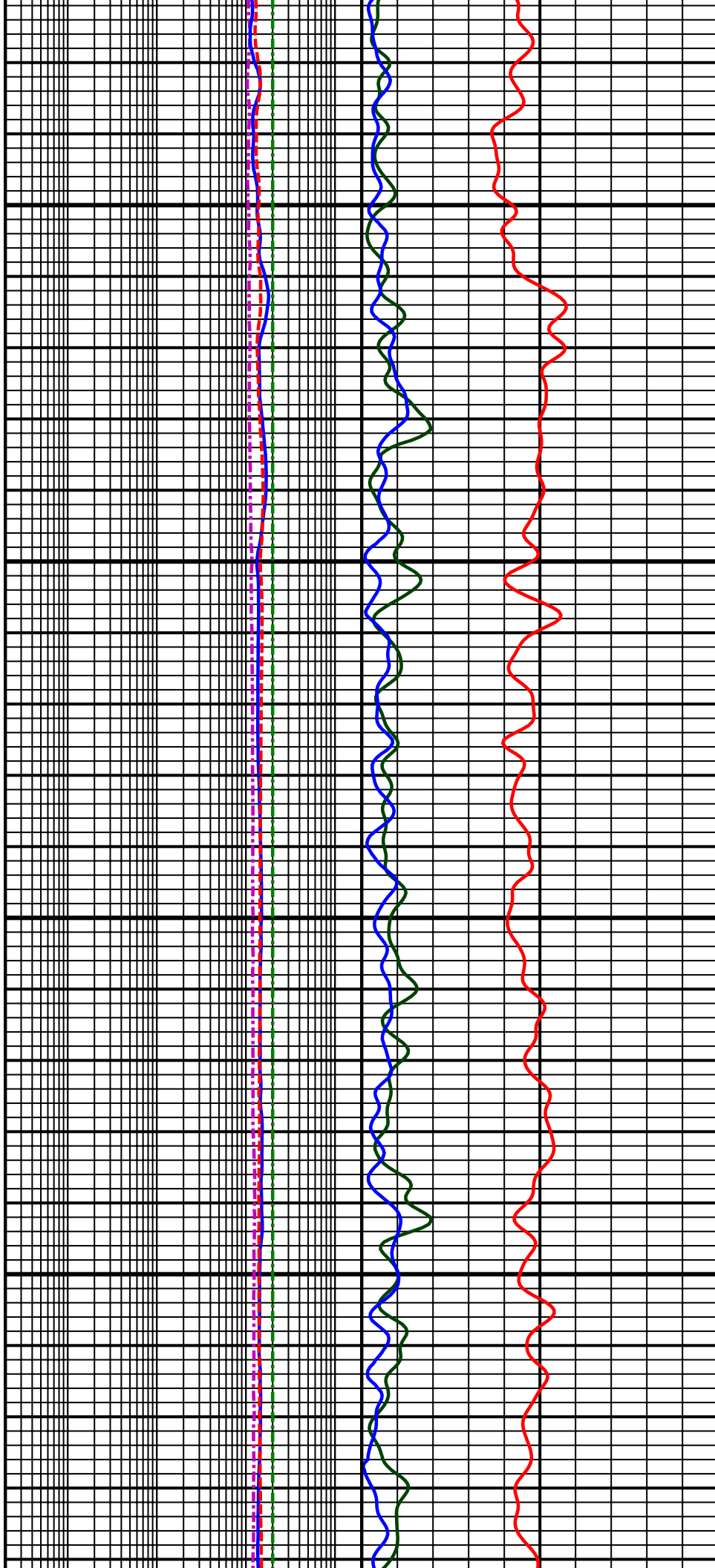
9500  
MD



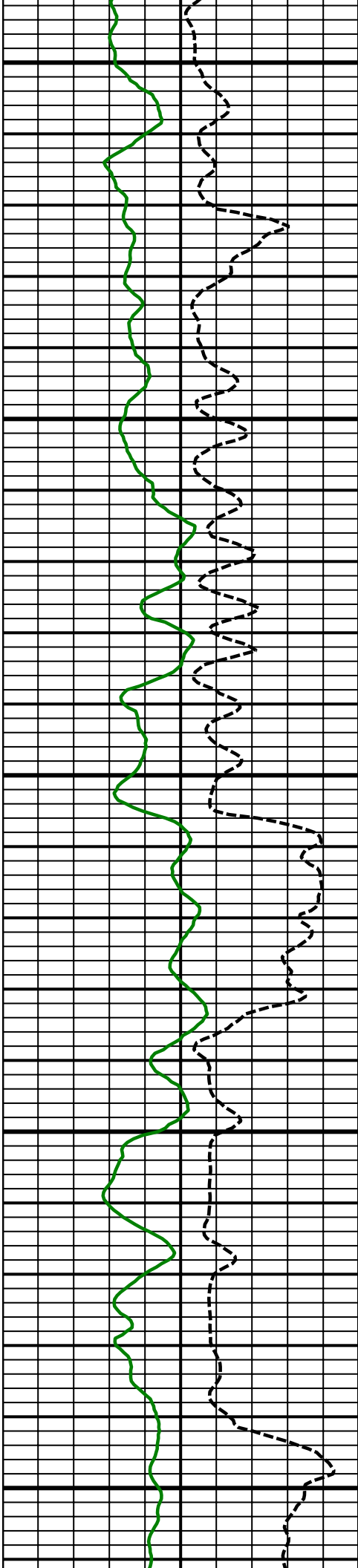


9600  
MD

9700  
MD

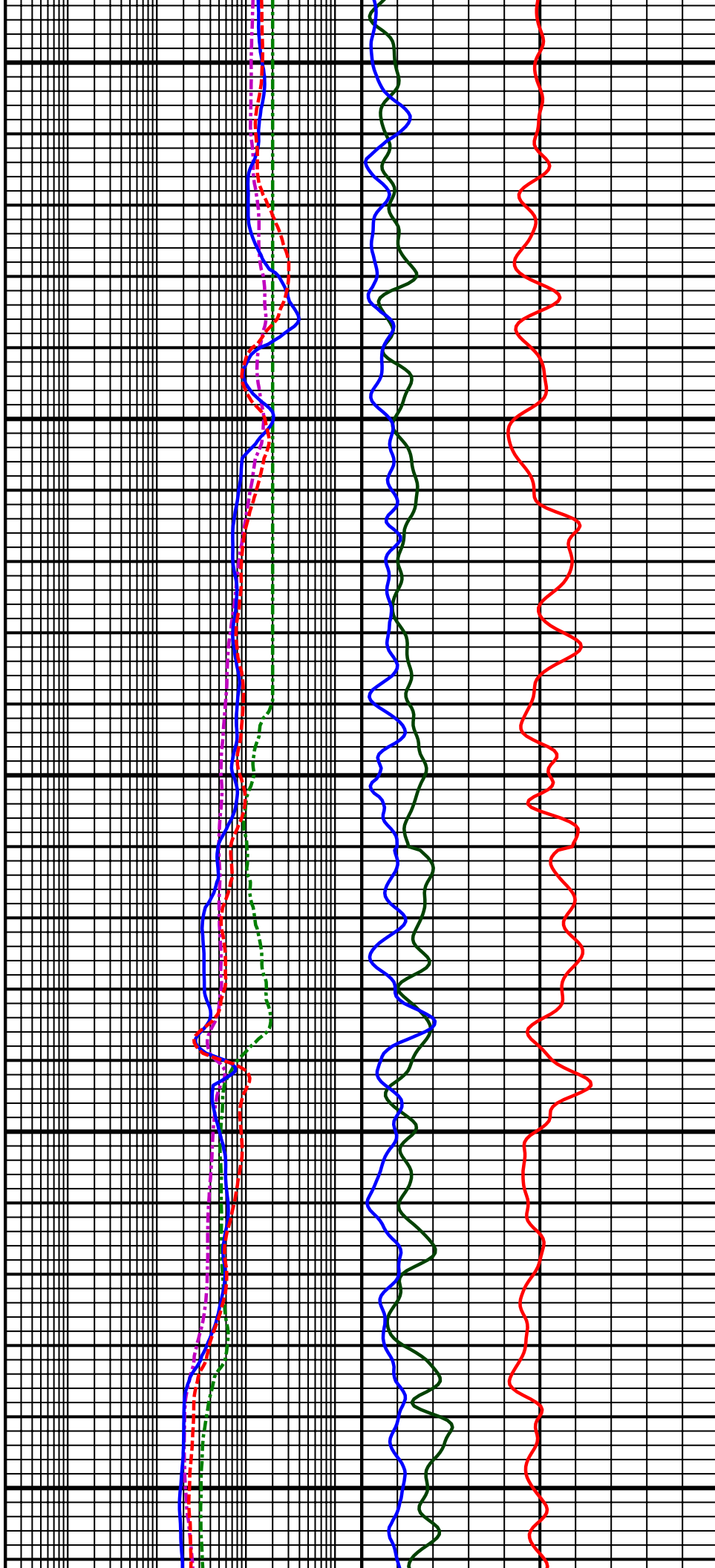


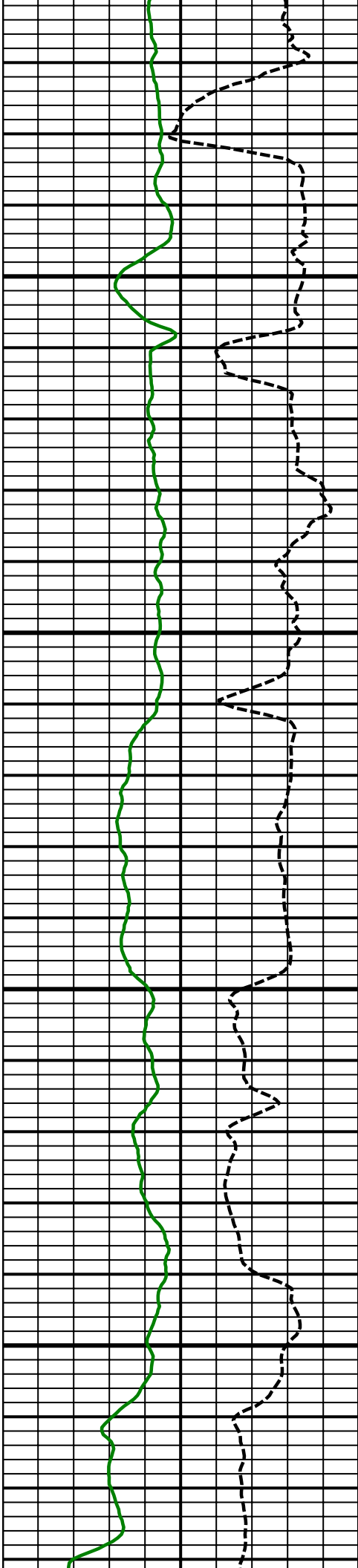




9800  
MD

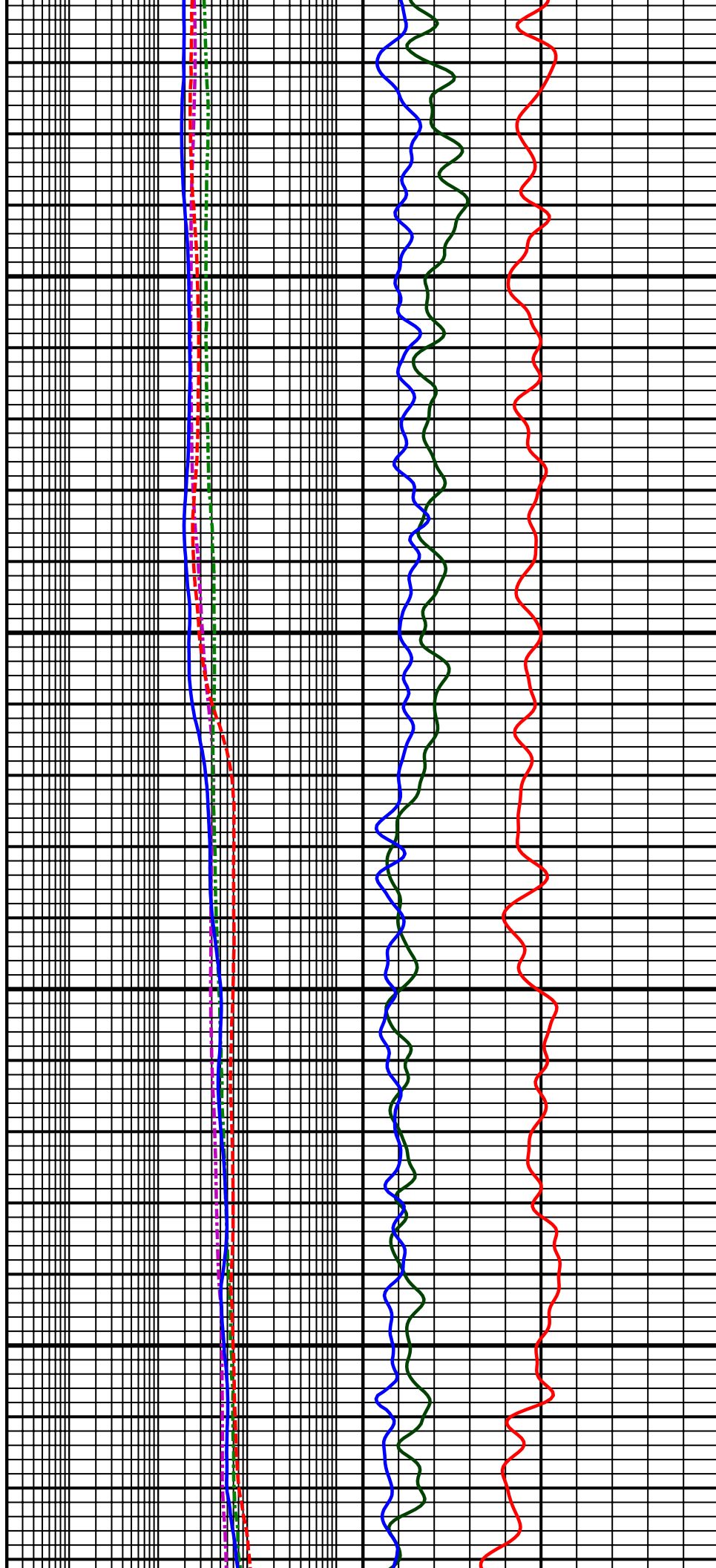
9900  
MD

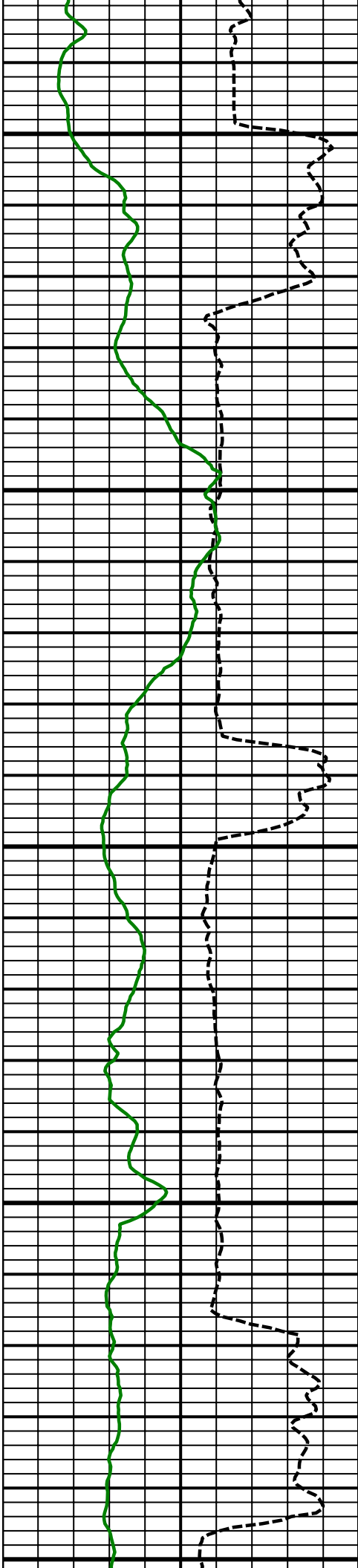




10000  
MD

10100  
MD

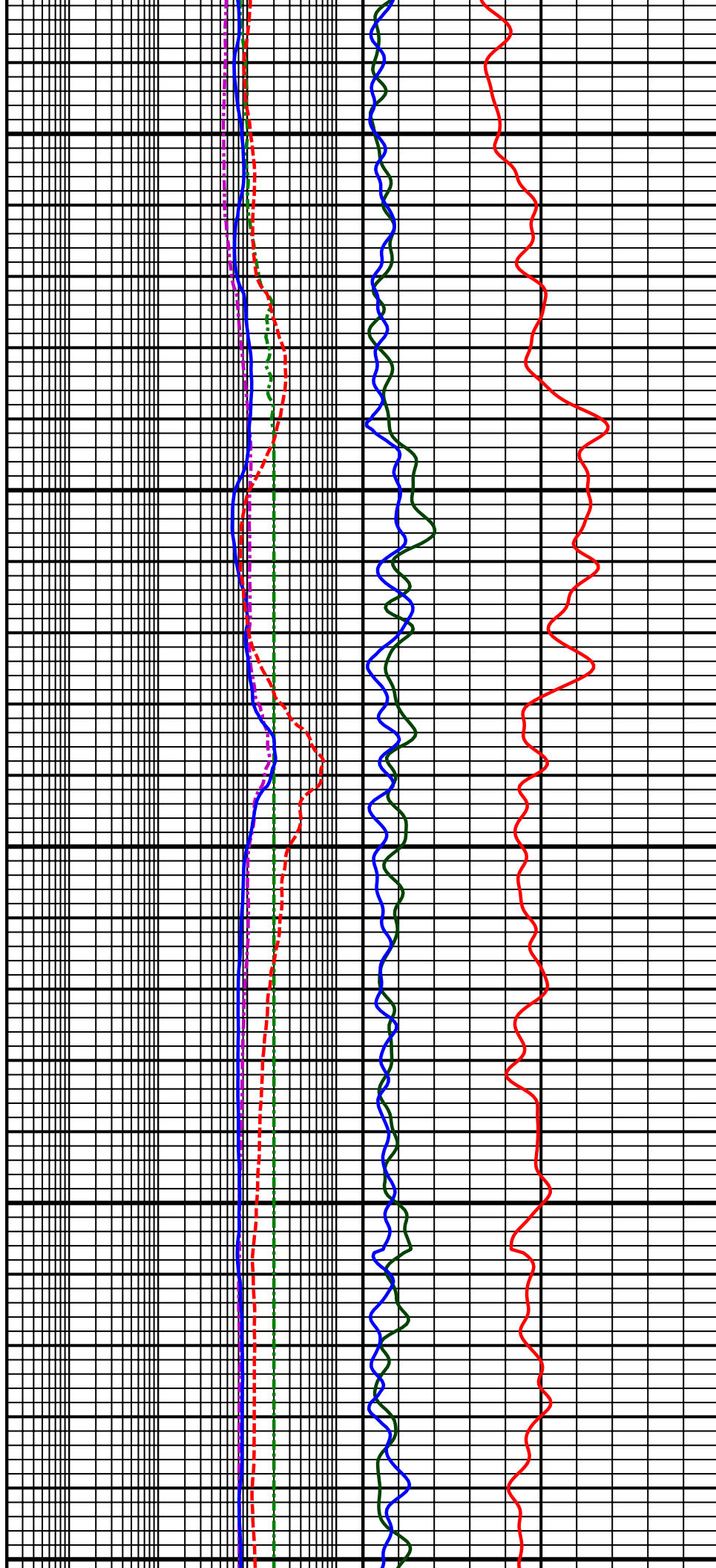


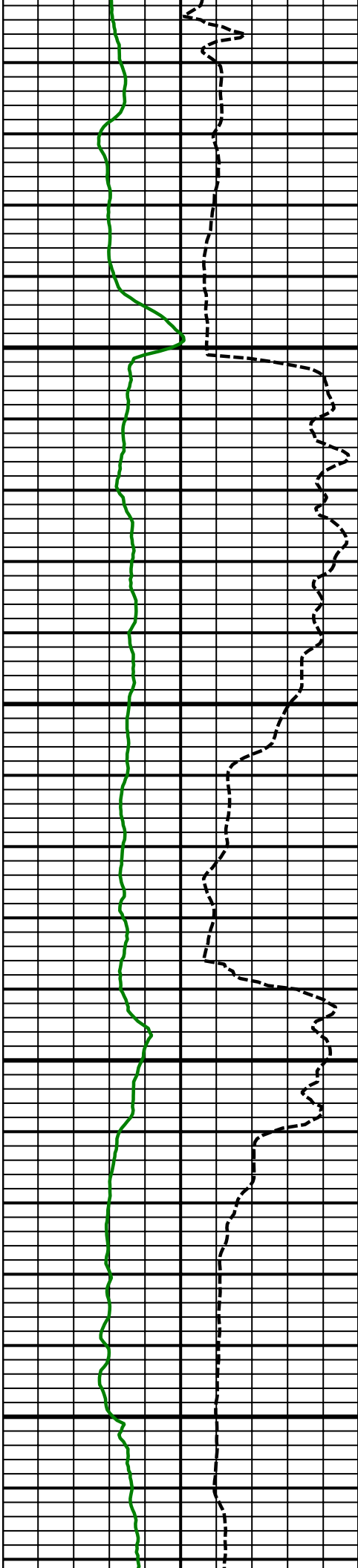


10200  
MD

10300  
MD

10400

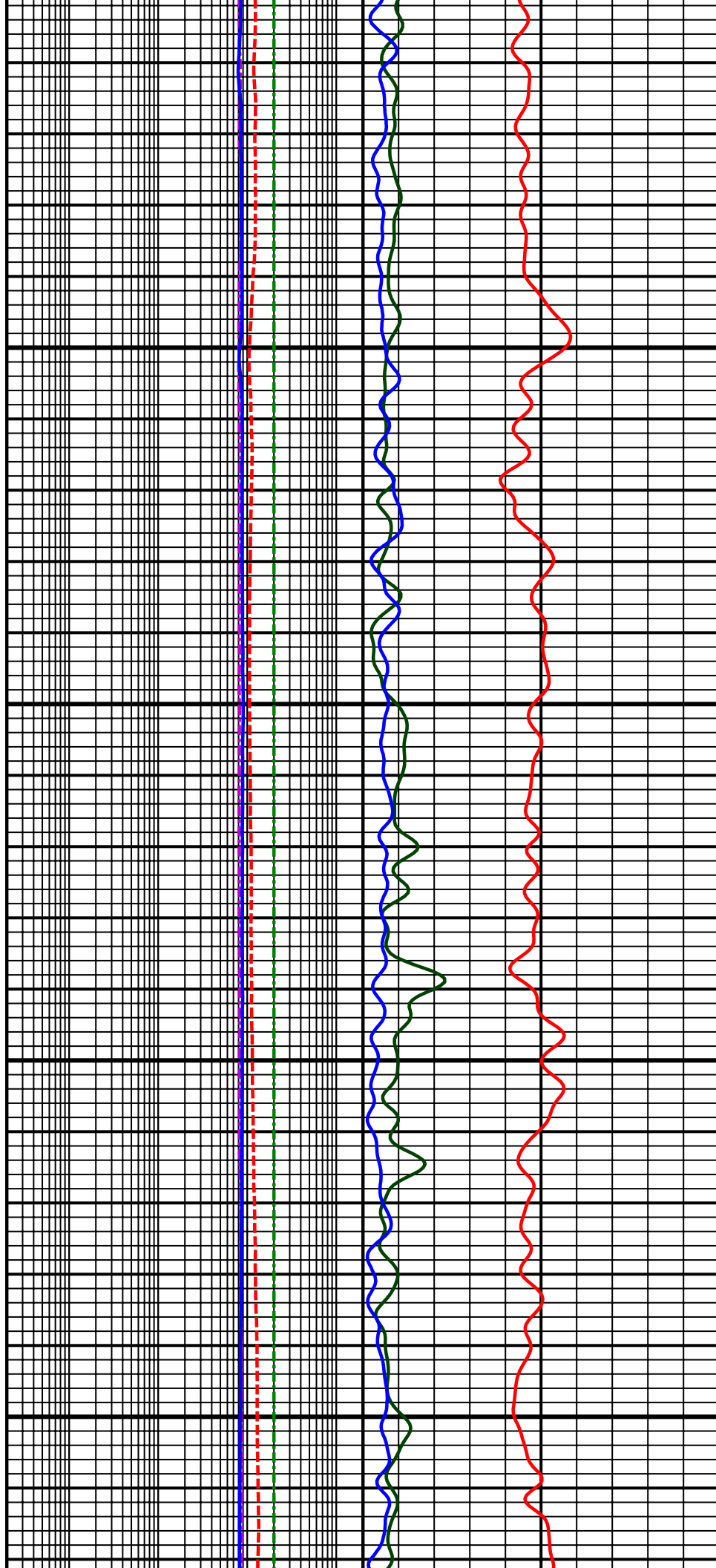


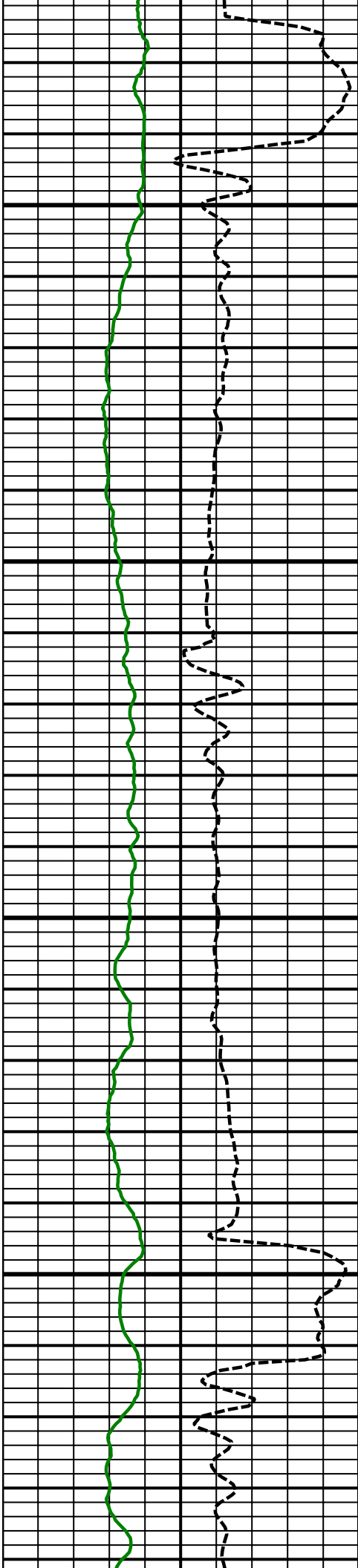


MD

10500  
MD

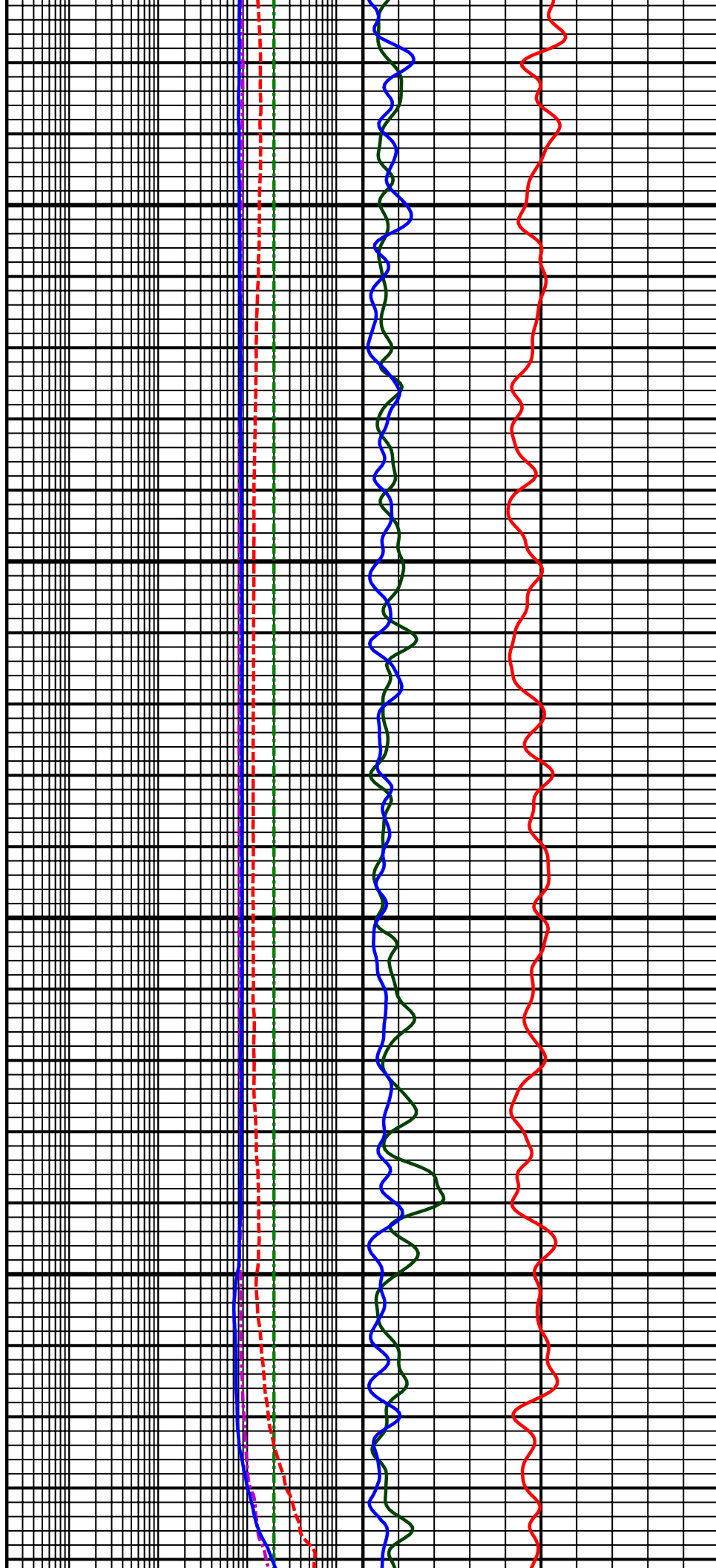
10600  
MD

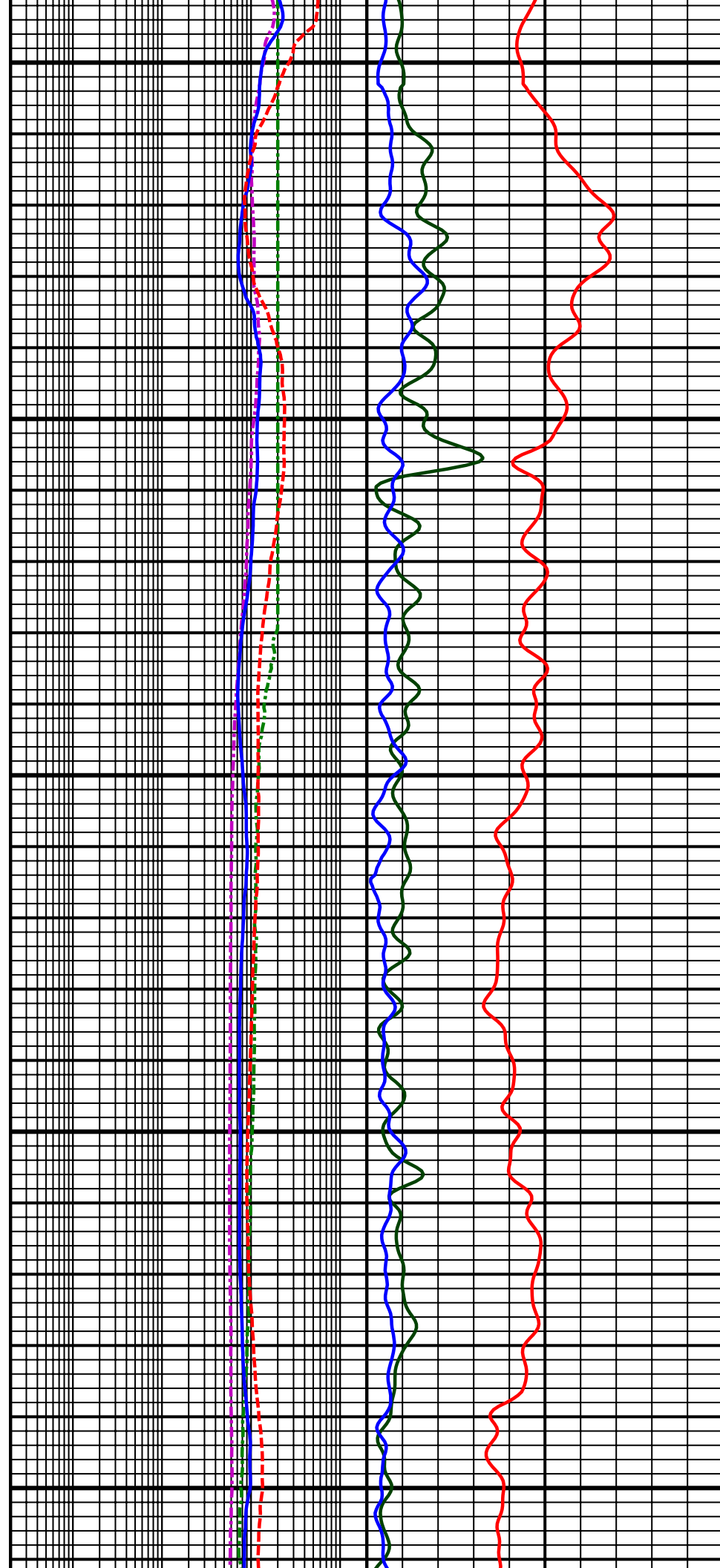
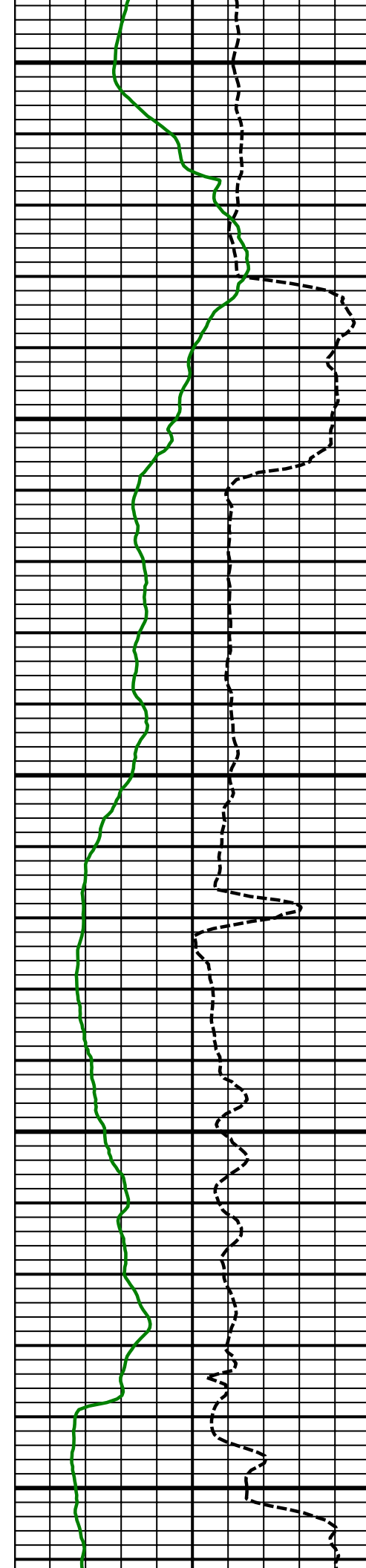


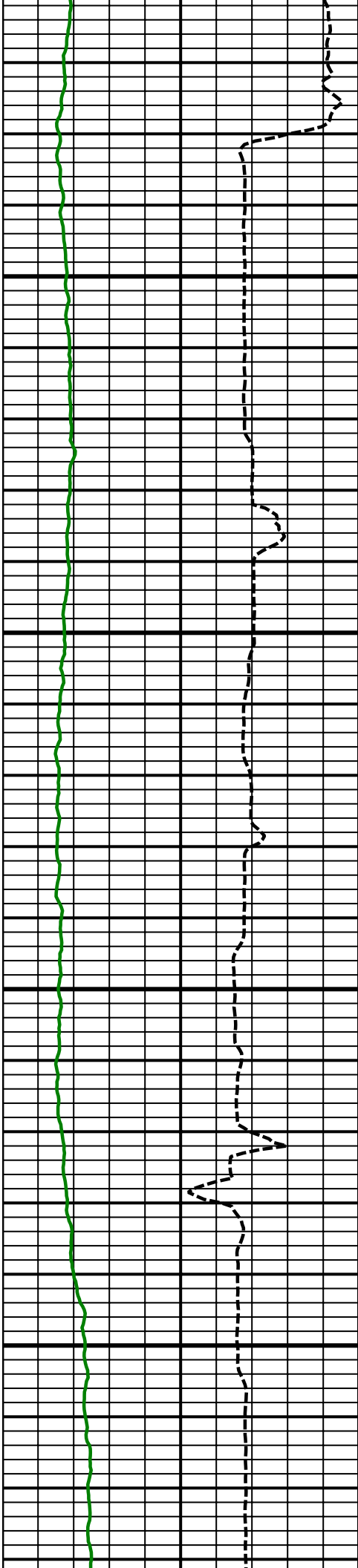


10700  
MD

10800  
MD

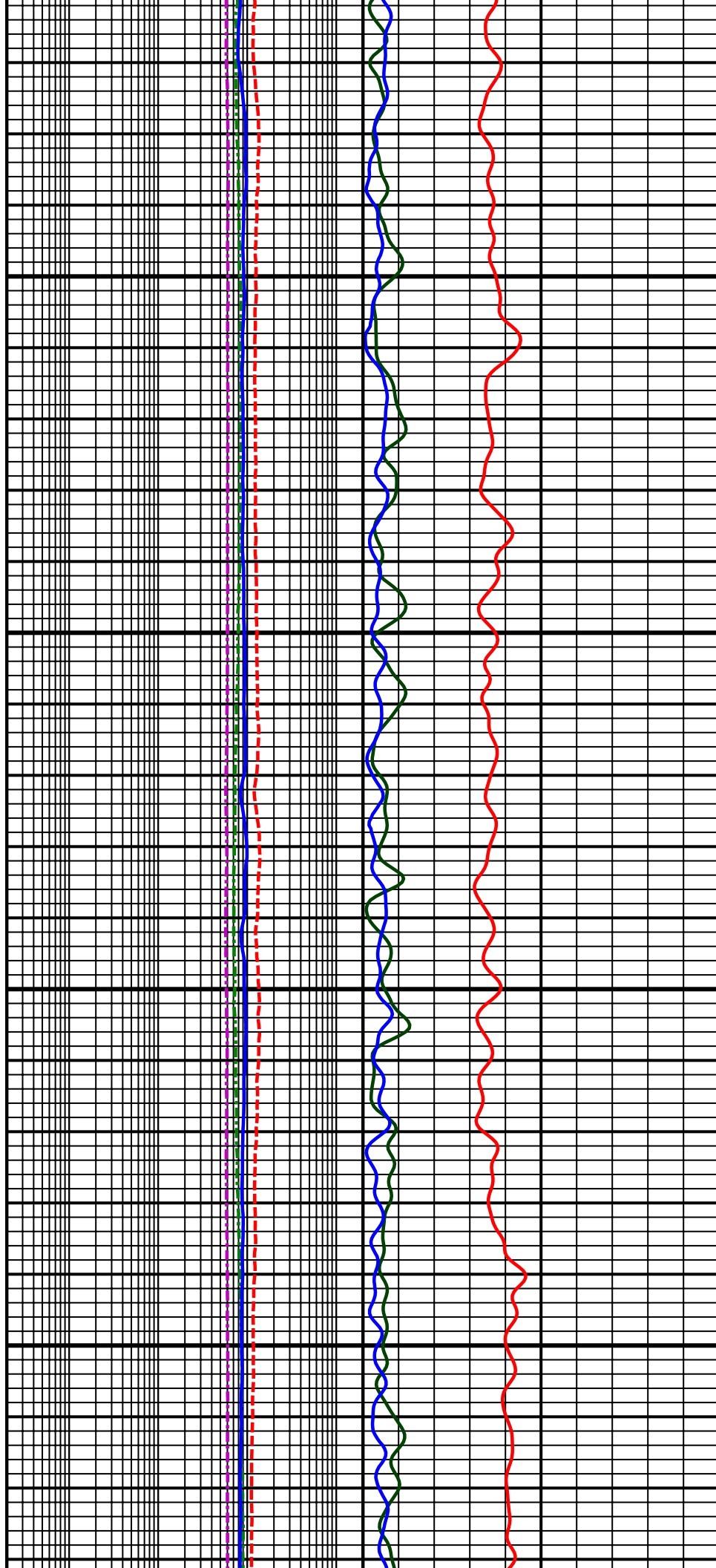


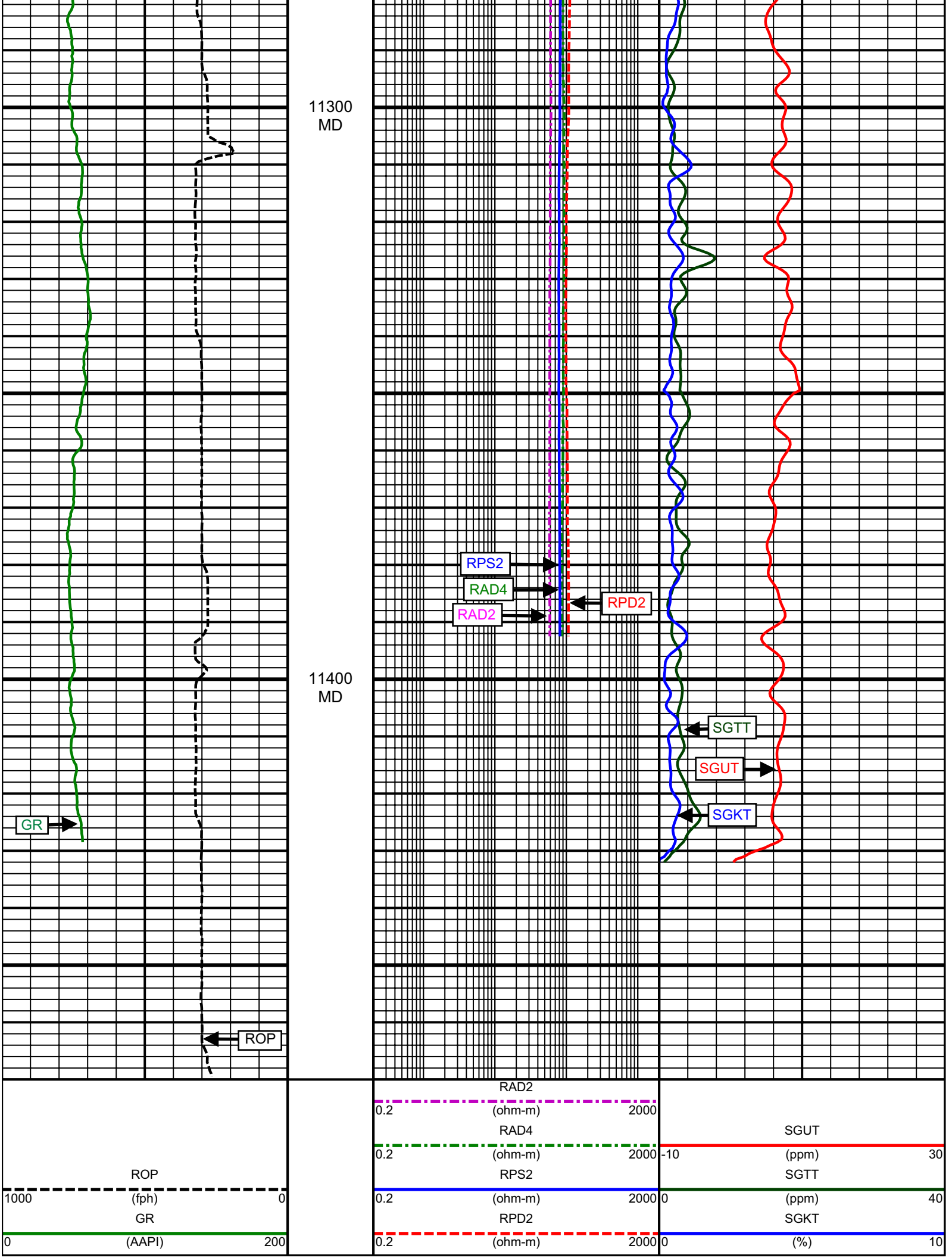




11100  
MD

11200  
MD







SURVEY						
Survey Calculation Method: <b>Minimum Curvature</b>						
Magnetic Reference	Target Direction	Total Magnetic Field	Magnetic Dip Angle	Magnetic Declination	Grid Convergence	Total Correction
<b>True North</b>	<b>355.03 deg</b>	<b>52771 nT</b>	<b>66.80 deg</b>	<b>8.64 deg</b>	<b>0.00 deg</b>	<b>8.64 deg</b>
<b>Survey Tie-On</b>	Depth	INC	AZ	TVD	NS	EW
	<b>839.00 ft</b>	<b>0.74 deg</b>	<b>325.01 deg</b>	<b>838.99 ft</b>	<b>-2.37 ft</b>	<b>-0.60 ft</b>

Well Head							
Depth (ft)	Inc (deg)	Azm (deg)	TVD (ft)	NS (ft)	EW (ft)	VSect (ft)	Dogleg (deg/100ft)
942.00	0.49	76.68	941.99	-1.72	-0.55	-1.67	1.00
1033.00	0.44	64.42	1032.98	-1.48	0.14	-1.49	0.12
1124.00	2.10	295.38	1123.96	-0.62	-1.05	-0.52	2.64
1214.00	4.15	279.22	1213.83	0.61	-5.76	1.11	2.46
1305.00	5.92	275.87	1304.47	1.62	-13.67	2.80	1.97
1396.00	6.21	260.84	1394.97	1.32	-23.20	3.32	1.77
1493.00	6.31	264.36	1491.39	-0.04	-33.69	2.87	0.41
1586.00	6.43	258.50	1583.82	-1.58	-43.88	2.22	0.71
1679.00	7.20	245.05	1676.17	-5.08	-54.26	-0.36	1.90
1773.00	7.02	243.55	1769.44	-10.12	-64.75	-4.48	0.28
1866.00	7.38	225.13	1861.72	-16.87	-74.07	-10.39	2.50
1959.00	8.31	220.12	1953.85	-26.22	-82.63	-18.97	1.24
2053.00	7.77	206.74	2046.94	-37.09	-89.87	-29.17	2.07
2146.00	7.00	206.63	2139.16	-47.77	-95.24	-39.34	0.83
2239.00	7.61	215.79	2231.41	-57.84	-101.38	-48.84	1.41
2332.00	6.86	218.92	2323.67	-67.15	-108.47	-57.50	0.91
2426.00	7.38	210.09	2416.95	-76.74	-115.03	-66.49	1.29
2519.00	8.96	210.47	2509.00	-88.15	-121.69	-77.28	1.70
2612.00	7.94	211.22	2600.99	-99.89	-128.70	-88.37	1.10
2706.00	8.47	212.91	2694.03	-111.25	-135.82	-99.07	0.62
2800.00	9.46	209.84	2786.88	-123.77	-143.43	-110.88	1.17
2885.00	9.14	209.69	2870.76	-135.69	-150.25	-122.16	0.38
2970.00	8.26	210.18	2954.78	-146.83	-156.66	-132.71	1.04
3055.00	9.05	215.24	3038.82	-157.57	-163.59	-142.81	1.29
3141.00	8.16	220.00	3123.85	-167.77	-171.41	-152.29	1.32
3226.00	7.71	213.71	3208.04	-177.14	-178.46	-161.01	1.15
3312.00	8.60	210.73	3293.17	-187.46	-184.94	-170.74	1.15
3397.00	9.68	212.38	3377.09	-198.96	-192.02	-181.58	1.31
3483.00	9.10	216.34	3461.93	-210.55	-199.92	-192.43	1.01
3568.00	7.73	220.17	3546.02	-220.33	-207.59	-201.52	1.74
3654.00	8.51	222.43	3631.15	-229.45	-215.61	-209.90	0.98
3738.00	7.91	220.04	3714.29	-238.46	-223.53	-218.20	0.82
3824.00	8.80	210.86	3799.38	-248.64	-230.71	-227.71	1.86
3909.00	8.25	210.34	3883.44	-259.48	-237.12	-237.96	0.65
3995.00	9.61	207.97	3968.40	-271.15	-243.61	-249.02	1.64
4080.00	9.22	207.36	4052.26	-283.46	-250.06	-260.73	0.47
4165.00	8.15	209.14	4136.28	-294.77	-256.13	-271.47	1.30
4251.00	7.08	211.84	4221.52	-304.60	-261.89	-280.76	1.31
4336.00	8.84	208.39	4305.70	-314.80	-267.76	-290.41	2.14
4421.00	8.94	210.09	4389.68	-326.26	-274.18	-301.28	0.33
4507.00	9.44	211.87	4474.57	-338.03	-281.25	-312.39	0.67
4592.00	9.70	218.52	4558.39	-349.55	-289.39	-323.16	1.34

4677.00	9.69	219.08	4642.18	-360.70	-298.36	-333.50	0.11
4763.00	8.16	222.87	4727.14	-370.80	-307.08	-342.80	1.90
4848.00	6.52	228.01	4811.44	-378.45	-314.77	-349.75	2.08
4934.00	7.20	220.36	4896.82	-385.82	-321.89	-356.48	1.32
5019.00	7.99	216.31	4981.08	-394.64	-328.84	-364.67	1.12
5105.00	9.91	207.18	5066.03	-406.04	-335.76	-375.43	2.77
5190.00	8.16	205.48	5149.97	-417.99	-341.69	-386.82	2.08
5276.00	7.59	208.39	5235.16	-428.50	-347.02	-396.83	0.81
5361.00	8.95	208.21	5319.28	-439.27	-352.82	-407.05	1.60
5447.00	9.80	205.87	5404.13	-451.75	-359.17	-418.93	1.08
5532.00	8.09	214.18	5488.09	-463.21	-365.69	-429.78	2.52
5617.00	8.41	213.29	5572.21	-473.35	-372.46	-439.30	0.41
5703.00	7.52	219.99	5657.39	-482.92	-379.53	-448.22	1.49
5788.00	5.82	217.44	5741.81	-490.60	-385.72	-455.34	2.03
5874.00	4.51	216.46	5827.46	-496.78	-390.38	-461.10	1.53
5959.00	3.59	212.85	5912.24	-501.71	-393.81	-465.70	1.12
6044.00	2.04	200.08	5997.14	-505.36	-395.78	-469.18	1.96
6130.00	1.36	165.78	6083.10	-507.79	-396.05	-471.57	1.39
6215.00	0.66	183.44	6168.09	-509.26	-395.83	-473.05	0.89
6301.00	0.73	158.45	6254.08	-510.26	-395.66	-474.07	0.36
6386.00	0.70	170.43	6339.08	-511.28	-395.38	-475.10	0.18
6462.00	0.35	176.72	6415.07	-511.97	-395.29	-475.80	0.47
6518.00	1.38	359.06	6471.07	-511.46	-395.29	-475.29	3.09
6561.00	7.58	357.15	6513.92	-508.11	-395.44	-471.94	14.42
6603.00	13.07	0.22	6555.22	-500.59	-395.56	-464.44	13.13
6646.00	17.29	3.88	6596.71	-489.35	-395.11	-453.28	10.06
6689.00	20.21	6.02	6637.43	-475.58	-393.89	-439.67	6.98
6731.00	23.98	5.25	6676.33	-459.86	-392.35	-424.14	9.00
6774.00	27.66	5.50	6715.03	-441.22	-390.59	-405.72	8.56
6817.00	30.30	5.86	6752.65	-420.49	-388.53	-385.25	6.15
6860.00	29.91	0.16	6789.85	-398.97	-387.39	-363.91	6.71
6902.00	33.50	357.37	6825.58	-376.92	-387.90	-341.89	9.23
6945.00	38.81	358.78	6860.29	-351.57	-388.73	-316.57	12.50
6987.00	44.12	359.18	6891.75	-323.77	-389.22	-288.84	12.66
7030.00	49.84	359.37	6921.08	-292.35	-389.61	-257.50	13.31
7073.00	53.43	358.54	6947.76	-258.65	-390.23	-223.87	8.48
7115.00	58.18	356.19	6971.36	-223.96	-391.85	-189.17	12.22
7158.00	64.26	357.08	6992.05	-186.35	-394.05	-151.52	14.26
7201.00	70.99	359.93	7008.42	-146.63	-395.06	-111.86	16.81
7243.00	73.70	0.85	7021.15	-106.62	-394.79	-72.01	6.78
7286.00	76.86	2.25	7032.08	-65.05	-393.66	-30.70	7.99
7329.00	83.13	2.40	7039.55	-22.76	-391.94	11.28	14.59
7364.00	84.95	2.15	7043.18	12.02	-390.56	45.81	5.25
7491.00	90.35	359.47	7048.39	138.84	-388.78	172.00	4.75
7576.00	90.37	358.93	7047.85	223.83	-389.96	256.78	0.64
7661.00	90.00	359.83	7047.58	308.83	-390.88	341.53	1.14
7747.00	90.56	359.16	7047.16	394.82	-391.64	427.27	1.02
7832.00	90.62	0.26	7046.28	479.82	-392.07	511.98	1.30
7918.00	89.88	0.83	7045.91	565.81	-391.25	597.58	1.09
8003.00	88.46	357.92	7047.14	650.78	-392.18	682.31	3.81
8088.00	90.74	359.10	7047.73	735.75	-394.39	767.15	3.02
8174.00	91.67	0.35	7045.92	821.72	-394.80	852.84	1.81
8259.00	90.86	1.97	7044.05	906.68	-393.08	937.33	2.13
8345.00	90.74	1.74	7042.85	992.63	-390.30	1022.71	0.30
8430.00	89.38	1.54	7042.76	1077.59	-387.86	1107.14	1.62
8516.00	89.94	0.67	7043.27	1163.57	-386.21	1192.66	1.20
8601.00	90.25	359.84	7043.13	1248.57	-385.83	1277.30	1.04
8687.00	90.25	0.59	7042.75	1334.57	-385.50	1362.95	0.87
8772.00	90.43	359.70	7042.25	1419.57	-385.29	1447.61	1.07
8857.00	89.75	1.36	7042.11	1504.56	-384.50	1532.21	2.11
8943.00	88.89	0.39	7043.13	1590.54	-383.19	1617.76	1.51

9028.00	89.75	0.50	7044.14	1675.53	-382.53	1702.37	1.02
9114.00	90.25	0.06	7044.14	1761.53	-382.11	1788.01	0.77
9199.00	90.99	358.99	7043.22	1846.52	-382.81	1872.74	1.53
9284.00	90.18	0.34	7042.35	1931.51	-383.31	1957.46	1.85
9370.00	90.18	1.50	7042.08	2017.50	-381.93	2043.00	1.35
9455.00	88.70	2.67	7042.92	2102.44	-378.84	2127.35	2.22
9541.00	88.58	2.43	7044.96	2188.33	-375.01	2212.59	0.31
9626.00	88.21	1.55	7047.34	2273.24	-372.06	2296.93	1.12
9712.00	90.25	0.77	7048.49	2359.21	-370.32	2382.42	2.54
9797.00	91.85	0.46	7046.94	2444.19	-369.41	2467.00	1.92
9883.00	91.36	1.88	7044.53	2530.13	-367.65	2552.47	1.75
9968.00	90.12	2.84	7043.43	2615.05	-364.15	2636.77	1.84
10053.00	88.15	0.90	7044.71	2699.99	-361.38	2721.14	3.25
10139.00	87.53	0.40	7047.95	2785.92	-360.41	2806.67	0.93
10224.00	88.70	359.00	7050.75	2870.87	-360.85	2891.34	2.15
10309.00	87.47	358.33	7053.59	2955.80	-362.83	2976.12	1.65
10394.00	89.81	356.70	7055.61	3040.69	-366.51	3061.01	3.35
10480.00	90.68	357.52	7055.24	3126.57	-370.85	3146.95	1.39
10565.00	91.23	0.73	7053.82	3211.54	-372.15	3231.71	3.83
10650.00	89.81	1.27	7053.05	3296.52	-370.67	3316.24	1.79
10736.00	90.25	0.02	7053.01	3382.51	-369.70	3401.82	1.54
10821.00	91.54	0.45	7051.68	3467.50	-369.35	3486.46	1.60
10907.00	91.05	2.39	7049.73	3553.45	-367.22	3571.90	2.33
10992.00	91.42	1.91	7047.90	3638.37	-364.03	3656.23	0.71
11078.00	88.77	2.49	7047.76	3724.30	-360.73	3741.55	3.15
11163.00	89.57	0.98	7048.99	3809.25	-358.16	3825.95	2.01
11248.00	90.43	359.24	7048.99	3894.24	-357.99	3910.61	2.28
11334.00	89.69	359.47	7048.90	3980.24	-358.96	3996.37	0.90
11411.00	89.08	0.62	7049.73	4057.23	-358.90	4073.07	1.69
Projected to Total Depth:							
11469.00	89.08	0.62	7050.66	4115.22	-358.27	4130.78	0.00

---

\*Weatherford surveys from 942 ft MD to 11411 ft MD.\*

\*TD at 11469 ft MD.\*

The total correction is 8.64 deg relative to True North.

---



# Weatherford®

Final Print

COMPANY	<u>Anadarko</u>		
WELL	<u>Reigle 28N-4HZ</u>		
FIELD	<u>Wattenburg</u>		
RIG	<u>Xtreme 23</u>		
LOC.	<u>Colorado</u>	COUNTY	<u>Weld</u>