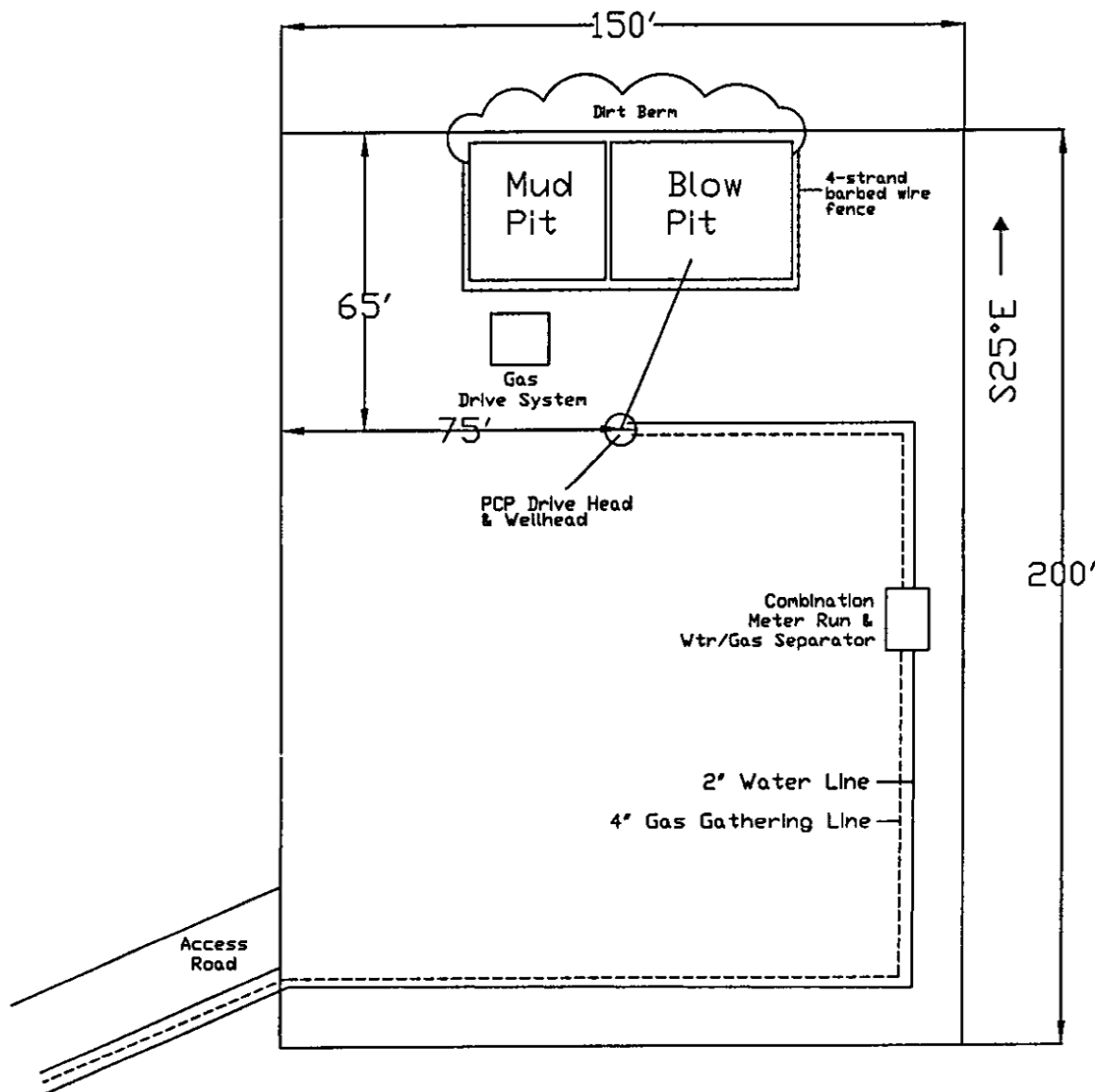


PIONEER NATURAL RESOURCES USA, INC.
 WELLSITE/PRODUCTION EQUIPMENT LAYOUT
 BEM #32-19
 SWNE Section 19, T33S-R66W
 Las Animas County, Colorado



01744279

Note: Mud & Blow Pits will be converted to unlined evaporation pits for production



Note:
 Approx. Scale 1"=40'
 Water Line _____
 Gas Line -----

5/8/06