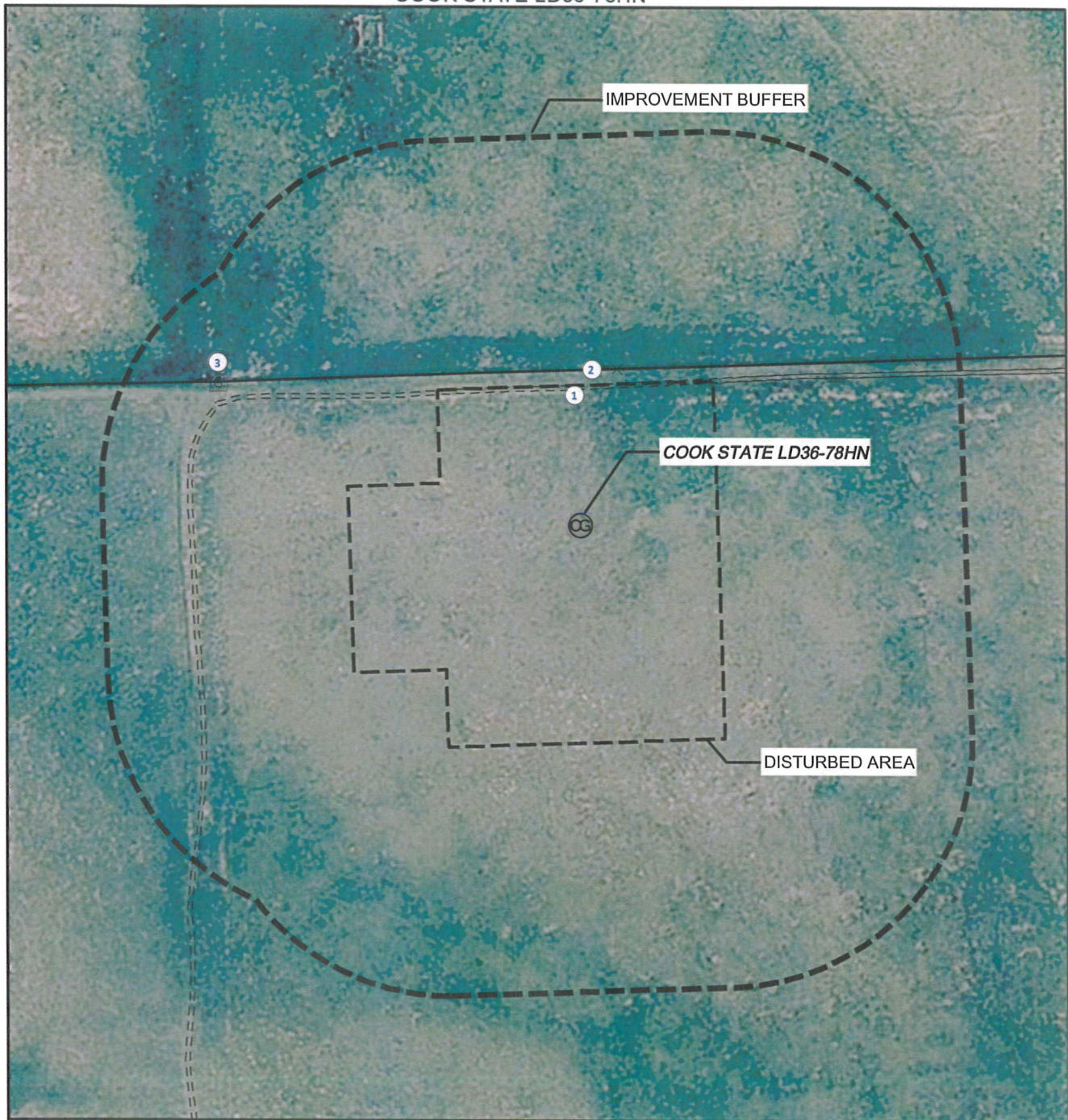


LOCATION DRAWING

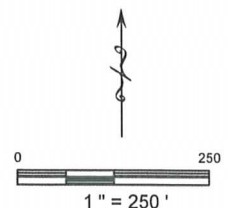
COOK STATE LD36-78HN

SECTION: 36
TOWNSHIP: 9N
RANGE: 58W



IMPROVEMENTS:

- ① SOUTH EDGE OF PRIVATE ROAD 222' N.
- ② FENCE 250' N.
- ③ GATE 632' NW.



NEAREST: BUILDING +5280' SE (HOME), PUBLIC ROAD 4635' SE (WEST EDGE COUNTY ROAD 133),
ABOVE GROUND UTILITY 4596' E (POWER LINE), RAILROAD +5280' SE, PROPERTY LINE 250' N.