

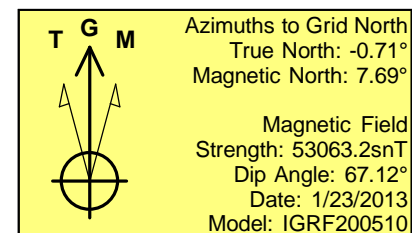
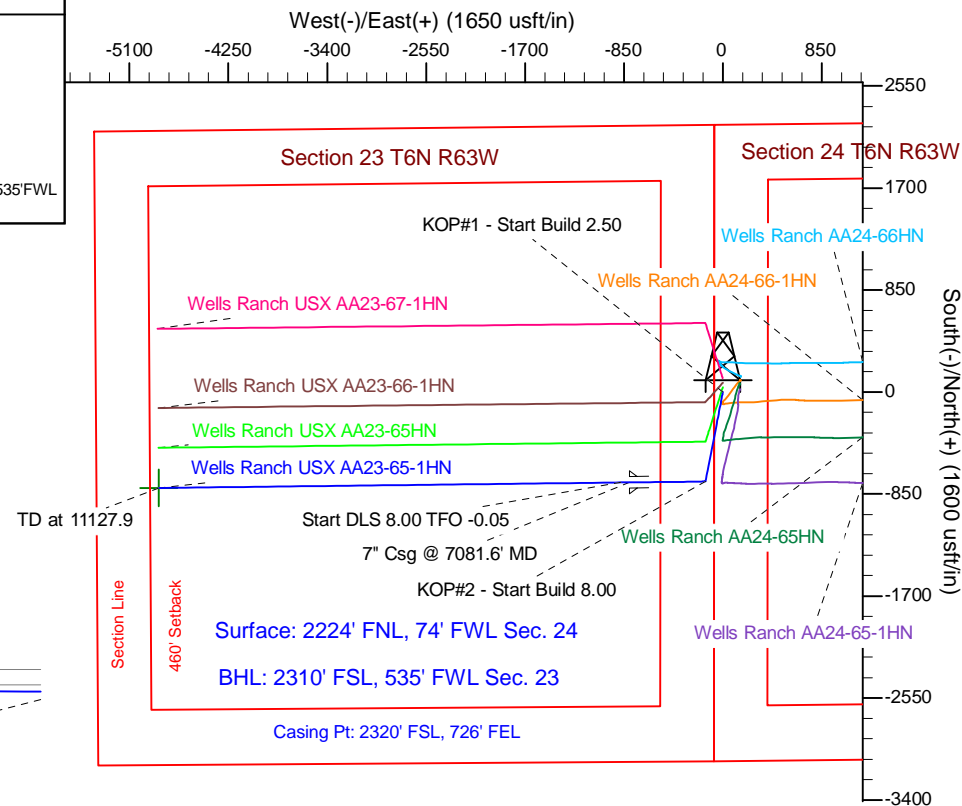
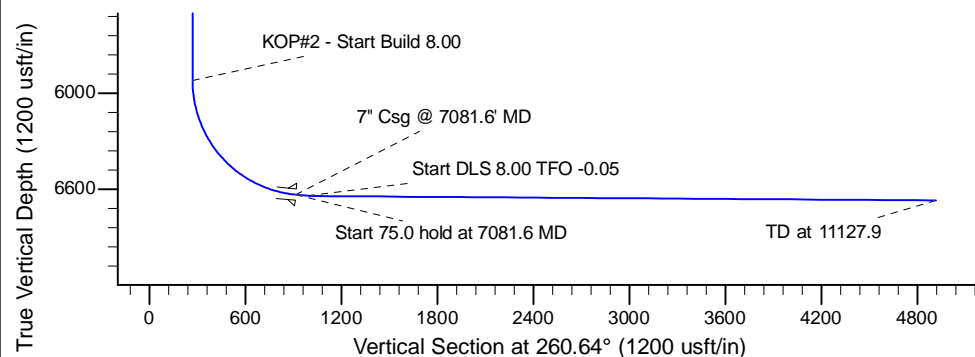
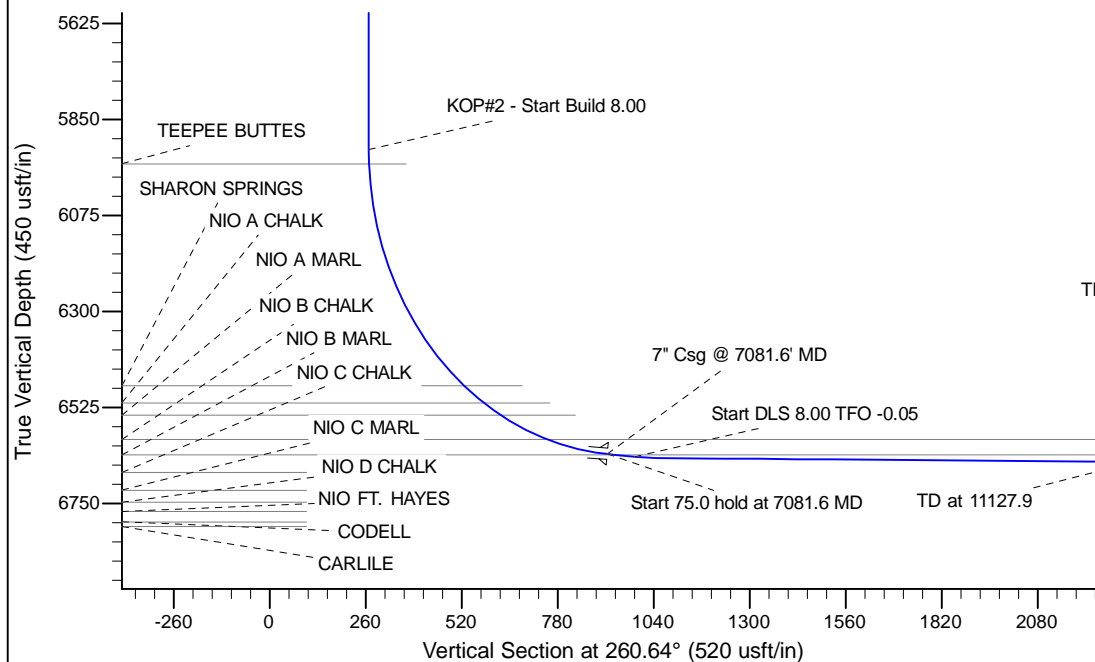
Project: Wattenberg Field
 Site: AA (Sec.24-T06N-R63W) Weld County, CO
 Well: Wells Ranch USX AA23-65-1HN
 Wellbore: Original Drilling
 Design: APD - Rev 0

Northern Region Drilling

Geodetic System: US State Plane 1983
 Datum: North American Datum 1983
 Ellipsoid: GRS 1980
 Zone: Colorado Northern Zone
 System Datum: Mean Sea Level

SECTION DETAILS

Sec	MD	Inc	Azi	TVD	+N/-S	+E/-W	Dleg	TFace	VSec	Target
1	0.0	0.00	0.00	0.0	0.0	0.0	0.00	0.00	0.0	
2	1500.0	0.00	0.00	1500.0	0.0	0.0	0.00	0.00	0.0	
3	2140.1	16.00	191.30	2131.8	-87.1	-17.4	2.50	191.30	31.3	
4	4255.5	16.00	191.30	4165.2	-658.9	-131.6	0.00	0.00	237.1	
5	4895.5	0.00	0.00	4797.0	-746.0	-149.0	2.50	180.00	268.4	
6	6019.1	0.00	0.00	5920.6	-746.0	-149.0	0.00	0.00	268.4	
7	7081.6	85.00	269.35	6634.0	-753.4	-802.7	8.00	269.35	914.6	
8	7156.6	85.00	269.35	6640.6	-754.3	-877.4	0.00	0.00	988.5	
9	7214.2	89.60	269.35	6643.3	-754.9	-934.9	8.00	-0.05	1045.3	
10	11127.9	89.60	269.35	6670.3	-799.6	-4848.3	0.00	0.00	4913.8	Wells Ranch USX AA23-65-1HN BHL 2310'FSL, 535'FWL



WELL DETAILS: Wells Ranch USX AA23-65-1HN			
Ground Level:	4810.0	Latitude	40.473180
Northing	1417138.10	Eastng	3307641.89
		Longitude	-104.394180
Plan: APD - Rev 0 (Wells Ranch USX AA23-65-1HN/Original Drilling)			
Created By:	Carrie Willers	Date:	10:00, January 24 2013
Checked:		Date:	
Reviewed:		Date:	
Approved:		Date:	