

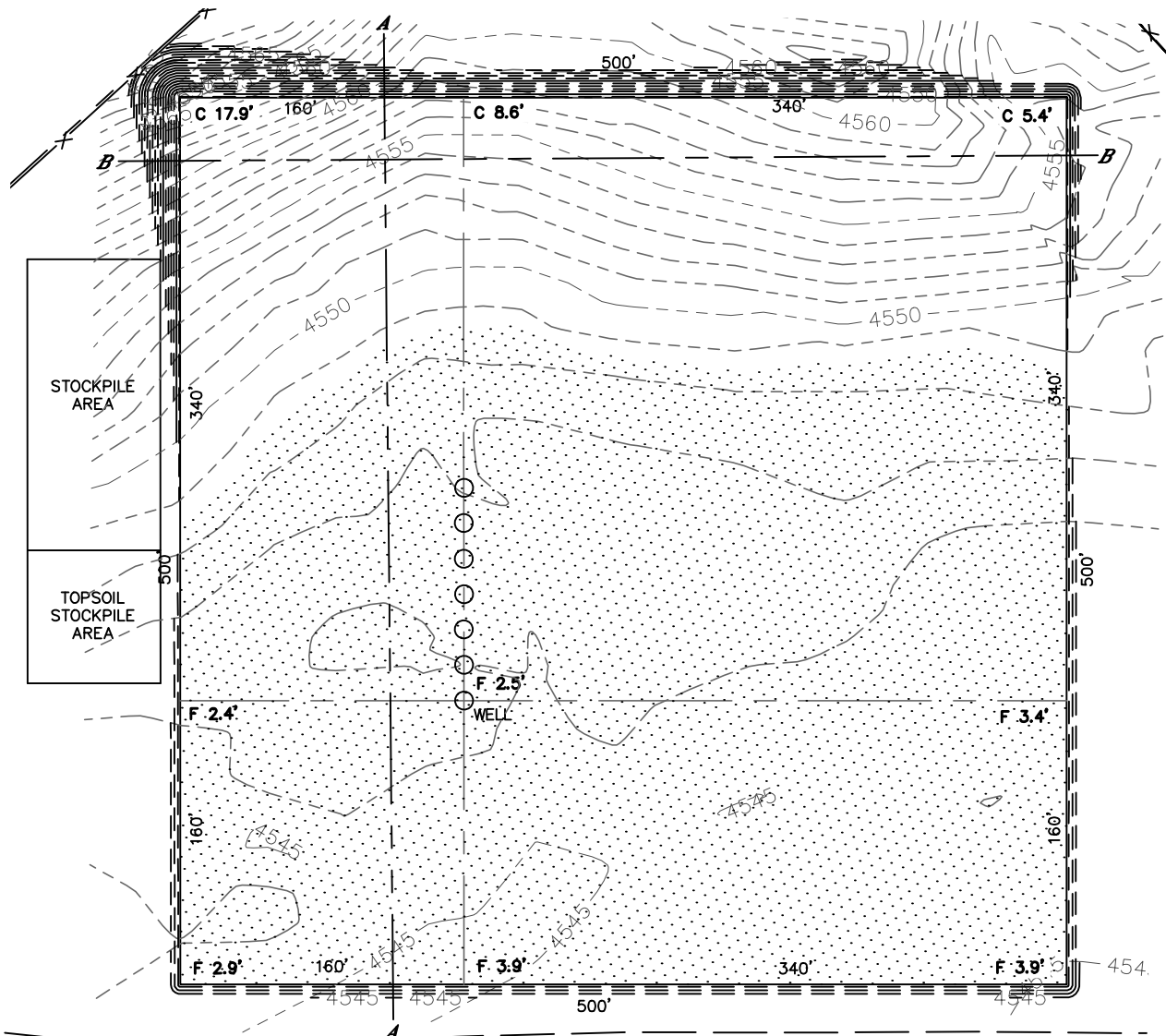


Lat40°, Inc. 1635 Foxtrail Drive, Suite 325 Loveland, CO 970-776-3321

CUT & FILL DIAGRAM

HUCK 41-28 PAD

SECTION: 28
TOWNSHIP: 5N
RANGE: 63W



OPERATOR: BONANZA CREEK ENERGY, INC.

LOCATION: 388 FNL, 539 FEL

EXISTING ELEV=4546.2'

PROPOSED ELEV=4548.7'

DISTURBANCE= 6.19 ACRES

ESTIMATED EARTHWORK:

TOPSOIL= 9,983 CY

CUT= 16,293 CY

FILL= 16,283 CY

STOCKPILE:

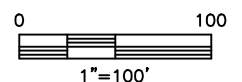
EXCESS= 10 CY

NOTE:

- 1) Ground elevations are based on an observed GPS elevation (NAVD 1988 DATUM).
- 2) No allowance has been made for soil expansion or compaction.
- 3) Proposed elevation does not account for top soil removal.
- 4) Top soil volume assumes 12" depth across entire location.
- 5) Fill slopes 2:1
- 6) Cut slopes 1.5:1

LEGEND

EX. CONTOUR	---
PRO. CONTOUR	- - -
FILL AREA	



DATE: 12/10/2012
PROJECT#: 2012053

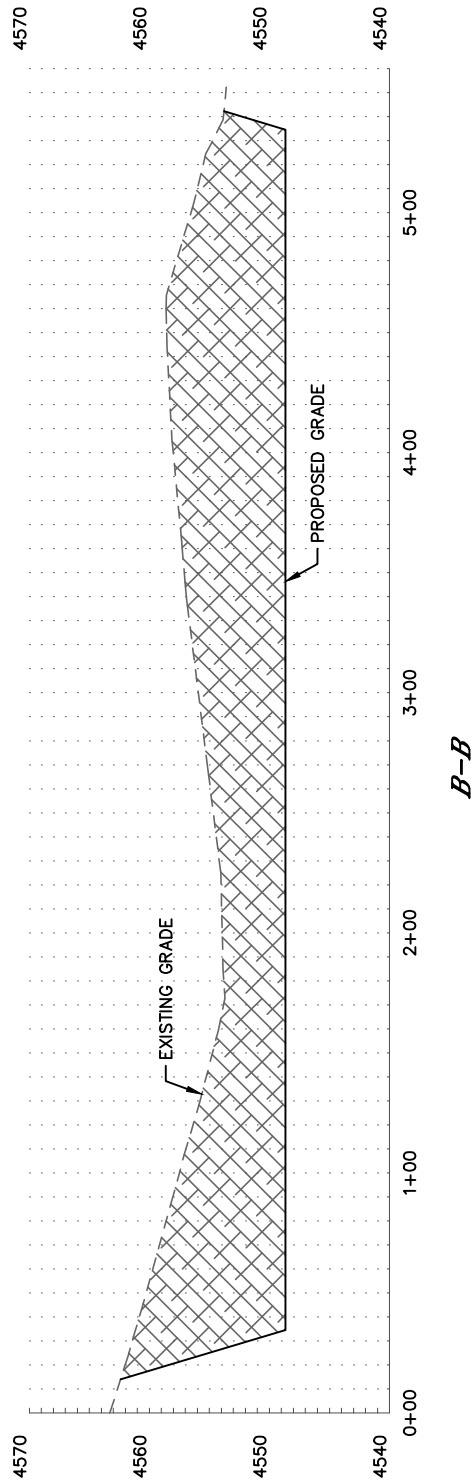
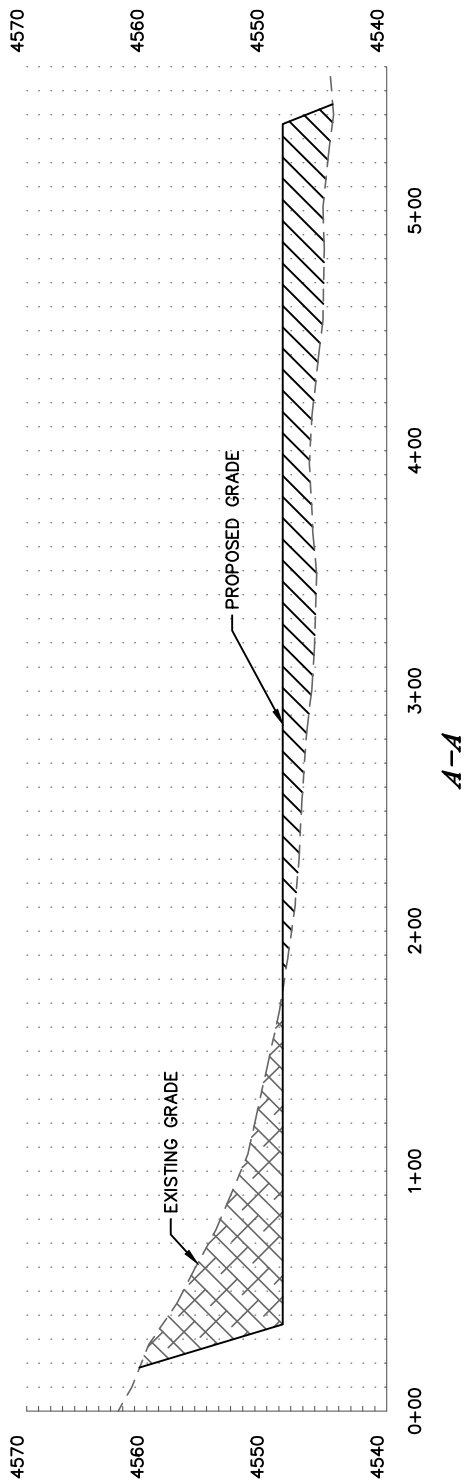


Lat40°, Inc. 1635 Foxtrail Drive, Suite 325 Loveland, CO 970-776-3321

CROSS SECTION DIAGRAM

HUCK 41-28 PAD

SECTION: 28
TOWNSHIP: 5N
RANGE: 63W



HORIZONTAL SCALE: 1"=80', VERTICAL SCALE: 1"=20'