

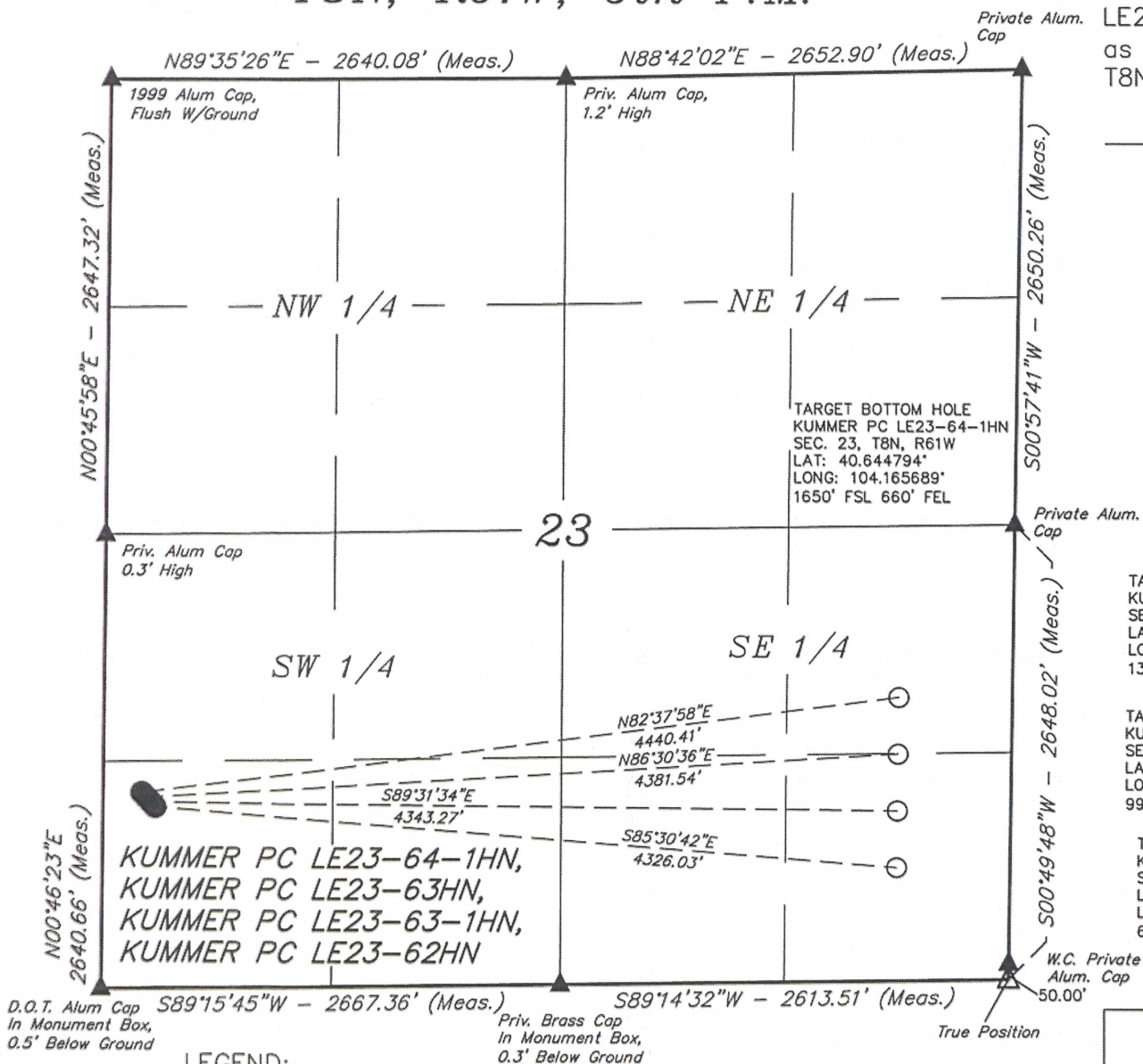
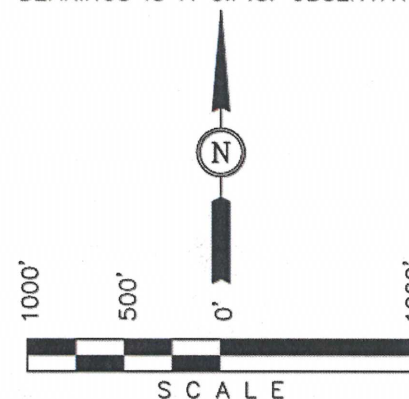
# MULTI WELL PLAN T8N, R61W, 6th P.M.

NOBLE ENERGY, INC.

Well location, KUMMER PC LE23-64-1HN, LE23-63HN, LE23-63-1HN & LE23-62HN, located as shown in the SW 1/4 SW 1/4 of Section 23, T8N, R61W, 6th P.M., Weld County, Colorado.

## BASIS OF BEARINGS

BASIS OF BEARINGS IS A G.P.S. OBSERVATION.



## LEGEND:

- = PROPOSED WELL HEAD.
- = TARGET BOTTOM HOLE.
- ▲ = SECTION CORNERS LOCATED.
- △ = SECTION CORNERS RE-ESTABLISHED. (Not Set on Ground.)

REVISED: 10-03-12

**UINTAH ENGINEERING & LAND SURVEYING**  
 85 SOUTH 200 EAST - VERNAL, UTAH 84078  
 (435) 789-1017

SCALE 1" = 1000'	DATE SURVEYED: 07-03-12	DATE DRAWN: 09-10-12
PARTY DARREN SHANKS K.H. S.R.L.	REFERENCES G.L.O. PLAT	
WEATHER WARM	FILE NOBLE ENERGY, INC.	

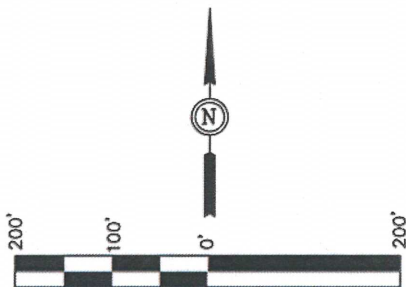
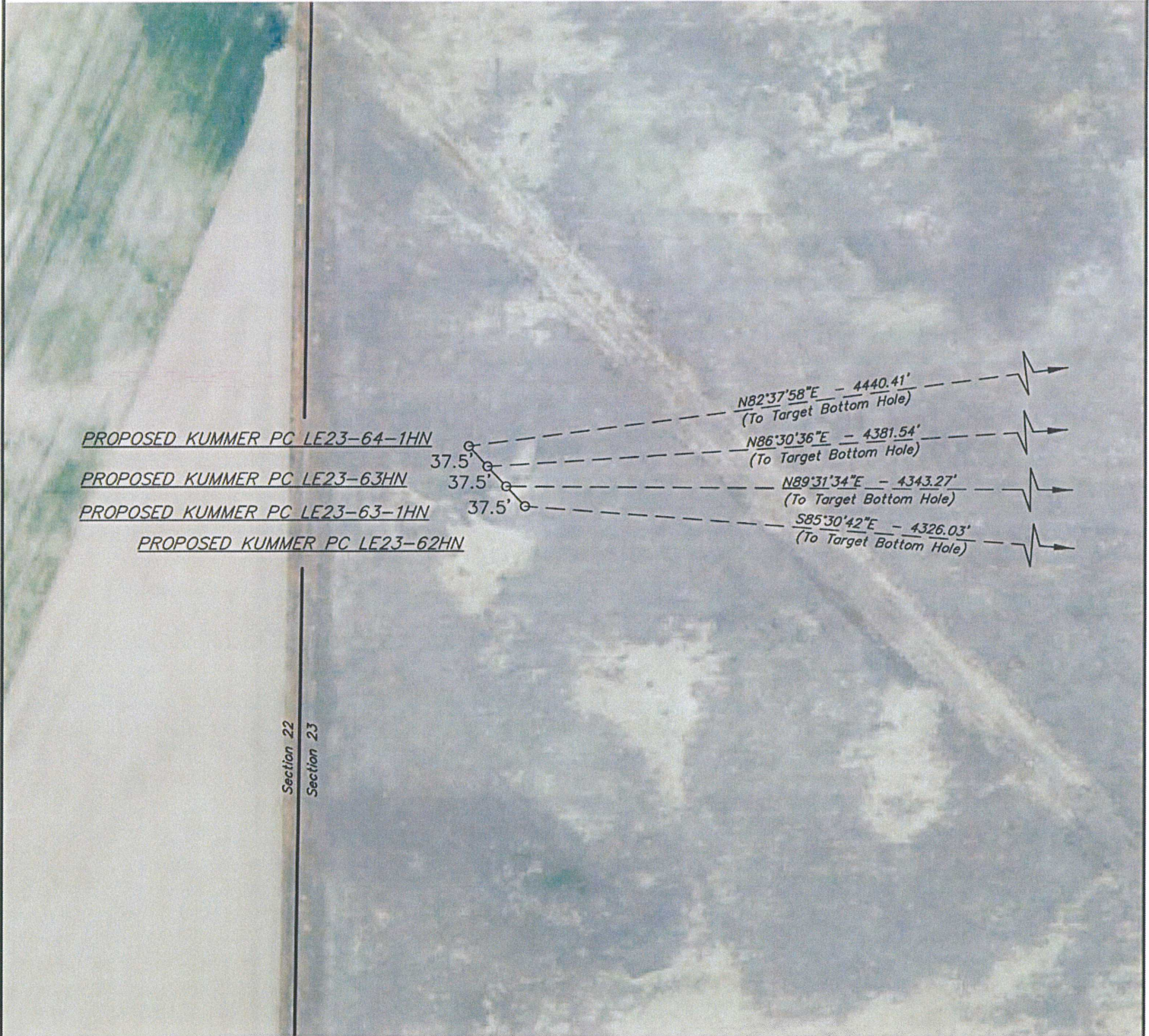


NOBLE ENERGY, INC.

MULTI-WELL PLAN

DATE: 09-11-12  
DRAWN BY: S.R.L.  
REVISED: 10-05-12

KUMMER PC LE23-64-1HN, LE23-63HN, LE23-63-1HN & LE23-62HN  
SECTION 23, T8N, R61W, 6th P.M.



PAD DETAILS:  
WELL HEAD SPACING = 37.5'