

---

# **WPX ENERGY ROCKY MOUNTAIN LLC-EBUS**

---

**SG 542-23  
GRAND VALLEY  
Garfield County , Colorado**

**Cement Surface Casing**  
**28-Nov-2012**

**Post Job Report**

## The Road to Excellence Starts with Safety

Sold To #: 300721	Ship To #: 2962994	Quote #:	Sales Order #: 9955672
Customer: WPX ENERGY ROCKY MOUNTAIN LLC-EBUS	Customer Rep: Hutson, Matt		
Well Name: SG	Well #: 542-23	API/UWI #: 05-045-21126	
Field: GRAND VALLEY	City (SAP): PARACHUTE	County/Parish: Garfield	State: Colorado
Lat: N 39.425 deg. OR N 39 deg. 25 min. 30.691 secs.	Long: W 108.076 deg. OR W -109 deg. 55 min. 24.949 secs.		
Contractor: NABORS 574	Rig/Platform Name/Num: NABORS 574		
Job Purpose: Cement Surface Casing			
Well Type: Development Well	Job Type: Cement Surface Casing		
Sales Person: MAYO, MARK	Srvc Supervisor: KUKUS, CHRISTOPHER	MBU ID Emp #: 413952	

## Job Personnel

HES Emp Name	Exp Hrs	Emp #	HES Emp Name	Exp Hrs	Emp #	HES Emp Name	Exp Hrs	Emp #
GOWEN, WESLEY M	0.0	496205	KUKUS, CHRISTOPHER A	0.0	413952	LAULAINEN, ROGER Edward	0.0	524413
MILLER II, MATTHEW Reginald	0.0	425164						

## Equipment

HES Unit #	Distance-1 way	HES Unit #	Distance-1 way	HES Unit #	Distance-1 way	HES Unit #	Distance-1 way
10567589C	60 mile	10867531	60 mile	10989685	60 mile	11583931	60 mile
11808829	60 mile						

## Job Hours

Date	On Location Hours	Operating Hours	Date	On Location Hours	Operating Hours	Date	On Location Hours	Operating Hours

TOTAL	Total is the sum of each column separately							
-------	--	--	--	--	--	--	--	--

## Job

Formation Name					Date				Time		Time Zone								
Formation Depth (MD)		Top			Bottom				Called Out		28 - Nov - 2012		02:30		MST				
Form Type					BHST						On Location		28 - Nov - 2012		05:30		MST		
Job depth MD		1315. ft			Job Depth TVD			1315. ft			Job Started		28 - Nov - 2012		10:53		MST		
Water Depth					Wk Ht Above Floor			5. ft			Job Completed		28 - Nov - 2012		12:03		MST		
Perforation Depth (MD)		From					To					Departed Loc		28 - Nov - 2012		13:30		MST	

## Well Data

Description	New / Used	Max pressure psig	Size in	ID in	Weight lbm/ft	Thread	Grade	Top MD ft	Bottom MD ft	Top TVD ft	Bottom TVD ft
OPEN HOLE				13.5				.	1315.		
SURFACE CASING	New		9.625	9.001	32.3		I-80	.	1297.		

Sales/Rental/3<sup>rd</sup> Party (HES)

Description	Qty	Qty uom	Depth	Supplier
PLUG,CMTG,TOP,9 5/8,HWE,8.16 MIN/9.06 MA	1	EA		

## Tools and Accessories

Type	Size	Qty	Make	Depth	Type	Size	Qty	Make	Depth	Type	Size	Qty	Make
Guide Shoe					Packer					Top Plug			
Float Shoe					Bridge Plug					Bottom Plug			
Float Collar					Retainer					SSR plug set			
Insert Float										Plug Container			
Stage Tool										Centralizers			

## Miscellaneous Materials

Gelling Agt	Conc	Surfactant	Conc	Acid Type	Qty	Conc	%
Treatment Fld	Conc	Inhibitor	Conc	Sand Type	Size	Qty	

## Fluid Data

Stage/Plug #: 1
-----------------

Fluid #	Stage Type	Fluid Name	Qty	Qty uom	Mixing Density lbm/gal	Yield ft <sup>3</sup> /sk	Mix Fluid Gal/sk	Rate bbl/min	Total Mix Fluid Gal/sk
1	Fresh Water Spacer		20.00	bbl	8.33	.0	.0	.0	
2	VersaCem Lead Cement	VERSACEM (TM) SYSTEM (452010)	170.0	sacks	12.3	2.38	13.75		13.75
13.75 Gal		FRESH WATER							
3	VersaCem Tail Cement	VERSACEM (TM) SYSTEM (452010)	160.0	sacks	12.8	2.11	11.75		11.75
11.75 Gal		FRESH WATER							
4	Fresh Water Displacement		98.00	bbl	.	.0	.0	.0	
<b>Calculated Values</b>		<b>Pressures</b>		<b>Volumes</b>					
Displacement		Shut In: Instant		Lost Returns		Cement Slurry		Pad	
Top Of Cement		5 Min		Cement Returns		Actual Displacement		Treatment	
Frac Gradient		15 Min		Spacers		Load and Breakdown		Total Job	
<b>Rates</b>									
Circulating		Mixing		Displacement		Avg. Job			
Cement Left In Pipe		Amount	46.7 ft	Reason	Shoe Joint				
Frac Ring # 1 @	ID	Frac ring # 2 @	ID	Frac Ring # 3 @	ID	Frac Ring # 4 @	ID		
The Information Stated Herein Is Correct				Customer Representative Signature					

*The Road to Excellence Starts with Safety*

<b>Sold To #:</b> 300721		<b>Ship To #:</b> 2962994		<b>Quote #:</b>		<b>Sales Order #:</b> 9955672	
<b>Customer:</b> WPX ENERGY ROCKY MOUNTAIN LLC-EBUS				<b>Customer Rep:</b> Hutson, Matt			
<b>Well Name:</b> SG			<b>Well #:</b> 542-23			<b>API/UWI #:</b> 05-045-21126	
<b>Field:</b> GRAND VALLEY		<b>City (SAP):</b> PARACHUTE		<b>County/Parish:</b> Garfield		<b>State:</b> Colorado	
<b>Legal Description:</b>							
<b>Lat:</b> N 39.425 deg. OR N 39 deg. 25 min. 30.691 secs.				<b>Long:</b> W 108.076 deg. OR W -109 deg. 55 min. 24.949 secs.			
<b>Contractor:</b> NABORS 574			<b>Rig/Platform Name/Num:</b> NABORS 574				
<b>Job Purpose:</b> Cement Surface Casing						<b>Ticket Amount:</b>	
<b>Well Type:</b> Development Well			<b>Job Type:</b> Cement Surface Casing				
<b>Sales Person:</b> MAYO, MARK			<b>Srv Supervisor:</b> KUKUS, CHRISTOPHER			<b>MBU ID Emp #:</b> 413952	

Activity Description	Date/Time	Cht #	Rate bbl/min	Volume bbl		Pressure psig		Comments
				Stage	Total	Tubing	Casing	
Call Out	11/28/2012 02:30							ELITE # 3
Depart Yard Safety Meeting	11/28/2012 04:30							ALL HES EMPLOYEES
Arrive At Loc	11/28/2012 05:30							RIG PULLING DRILL PIPE HES CREW ARRIVED 2 HOURS EARLY AND WAS ASKED TO WAIT OFF LOCATION PER CO REP REQUEST
Assessment Of Location Safety Meeting	11/28/2012 09:00							ALL HES EMPLOYEES
Pre-Rig Up Safety Meeting	11/28/2012 09:10							ALL HES EMPLOYEES
Rig-Up Equipment	11/28/2012 09:20							1 F-550 PICKUP 1 HT-400 PUMP TRUCK 1 660 BULK TRUCK
Pre-Job Safety Meeting	11/28/2012 10:40							ALL HES EMPLOYEES AND RIG CREW
Start Job	11/28/2012 10:53							TD: 1315 TP: 1297 SJ: 46.72 CSG: 9 5/8 32.3# OH: 13 1/2 MUD WT 10.3 VIS:50 RIG CIRCULATE A BOTTOM UP AT 16 BBLS MIN
Test Lines	11/28/2012 10:55					3750.0		PRESSURE TEST OK
Pump Spacer	11/28/2012 11:00		4	20	20		100.0	FRESH WATER SPACER
Activity Description	Date/Time	Cht #	Rate bbl/min	Volume bbl		Pressure psig		Comments
				Stage	Total	Tubing	Casing	

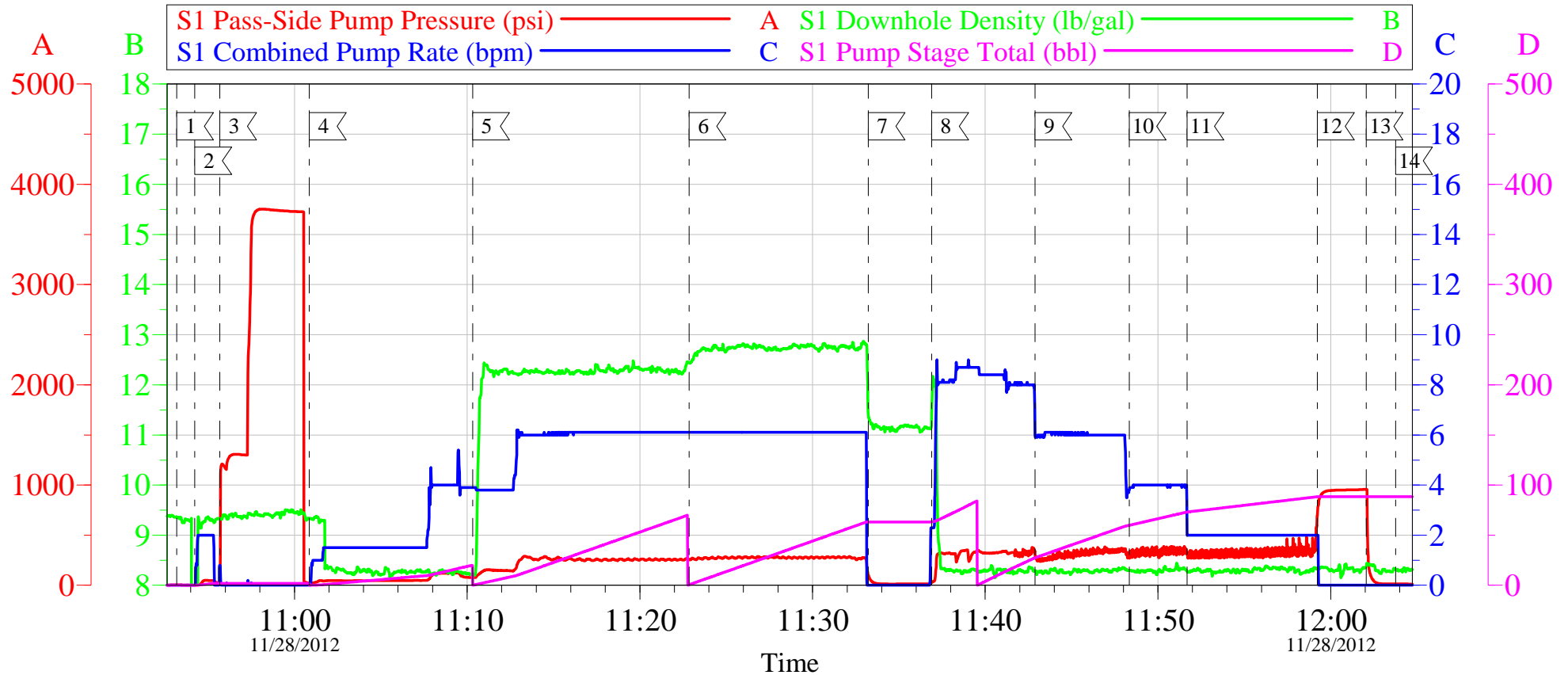
Pump Lead Cement	11/28/2012 11:10		7	72.1	72.1		290.0	170 SKS 12.3 PPG 2.38 YEILD 13.75 GAL / SK LEAD CEMENT WEIGHT VERIFIED VIA MUD SCALES THROUGH OUT LEAD CEMENT
Pump Tail Cement	11/28/2012 11:22		7	60.1	60.1		360.0	160 SKS 12.8 PPG 2.11 YEILD 11.75 GAL / SK TAIL CEMENT WEIGHT VERIFIED VIA MUD SCALES THROUGH OUT TAIL CEMENT
Shutdown	11/28/2012 11:33							HES WASHED UP ONTOP OF THE PLUG PER CO-REP REQUEST
Drop Plug	11/28/2012 11:34							PLUG AWAY NO PROBLEMS
Pump Displacement	11/28/2012 11:36		10	98.4	98.4		378.0	FRESH WATER DISPLACEMENTHAD TO SLOW RATE AT 50 BBLs AND 80 BBLs DUE TO VAC TRUCK NOT KEEPING UP
Slow Rate	11/28/2012 11:42		2	88.4	88.4		280.0	SLOW RATE TO BUMP PLUG
Bump Plug	11/28/2012 11:59		2	98.4	98.4		408.0	BUMP PLUG @ 408 AND TOOK PRESSURE UP TO 955 PSI
Check Floats	11/28/2012 12:02							FLOATS HELD 1 BBL BACK TO DISPLACEMENT TANKS
End Job	11/28/2012 12:03							WELL HAD GOOD CIRCULATION THROUGH OUT CEMENT JOB GOT 19 BBLs OF CEMENT TO SURFACE RIG USED 20LB SUGAR TICKET CHANGES: CHANGED DEPTH CHARGE TO 1315 TOOK OFF DERRICK CHARGE AND ADD HOURS CHANGED SUGAR TO 20 LBS
Pre-Rig Down Safety Meeting	11/28/2012 12:10							ALL HES EMPLOYEES
Rig-Down Equipment	11/28/2012 12:20							

***Cementing Job Log***

Activity Description	Date/Time	Cht #	Rate bbl/ min	Volume bbl		Pressure psig		Comments
				Stage	Total	Tubing	Casing	
Pre-Convoy Safety Meeting	11/28/2012 13:20							ALL HES EMPLOYEES
Crew Leave Location	11/28/2012 13:30							THANKS FOR USING HALLIBURTON CEMENT CHRIS KUKUS AND CREW

# WPX - SG 542-23

9 5/8 SURFACE



## Local Event Log

1 START JOB	10:53:11	2 FILL LINES	10:54:14
3 TEST LINES	10:55:41	4 PUMP FRESH WATER SPACER	11:00:52
5 PUMP LEAD CEMENT	11:10:19	6 PUMP TAIL CEMENT	11:22:51
7 SHUTDOWN / DROP PLUG	11:33:14	8 PUMP FRESH WATER DISPLACEMENT	11:36:54
9 SLOW RATE	11:42:53	10 SLOW RATE	11:48:20
11 SLOW RATE	11:51:41	12 BUMP PLUG	11:59:14
13 CHECK FLOATS	12:02:03	14 END JOB	12:03:45

Customer: WPX  
Well Description: SG 542-23  
Company Rep: MATT HUTSON

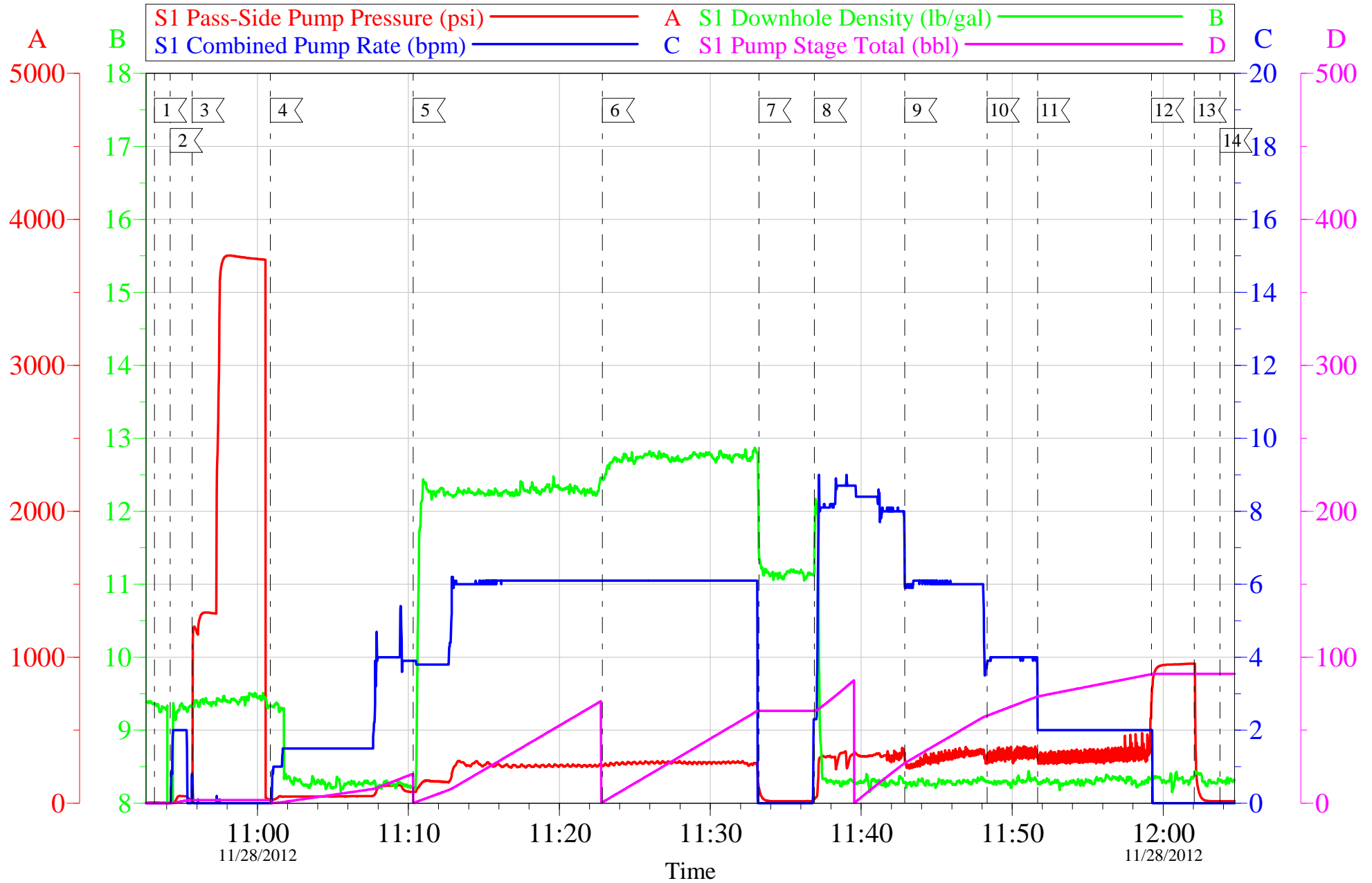
Job Date: 28-Nov-2012  
Job Type: SURFACE  
Cement Supervisor: CHRIS KUKUS

Sales Order #: 9955672  
ADC Used: YES  
Elite # 3: WESLEY GOWEN

OptiCem v6.4.10  
28-Nov-12 12:14

# WPX - SG 542-23

9 5/8 SURFACE



Customer: WPX	Job Date: 28-Nov-2012	Sales Order #: 9955672
Well Description: SG 542-23	Job Type: SURFACE	ADC Used: YES
Company Rep: MATT HUTSON	Cement Supervisor: CHRIS KUKUS	Elite # 3: WESLEY GOWEN

OptiCem v6.4.10  
28-Nov-12 12:14



# HALLIBURTON

## Water Analysis Report

Company: WPX  
Submitted by: CHRIS KUKUS  
Attention: J. TROUT/C.MARTINEZ  
Lease: SG  
Well #: 542-23

Date: 11/28/2012  
Date Rec.: 11/28/2012  
S.O.#: 9955672  
Job Type: SURFACE

Specific Gravity	<i>MAX</i>	<b>1</b>
pH	<i>8</i>	<b>6.8</b>
Potassium (K)	<i>5000</i>	<b>0</b> Mg / L
Calcium (Ca)	<i>500</i>	<b>120</b> Mg / L
Iron (FE2)	<i>300</i>	<b>0</b> Mg / L
Chlorides (Cl)	<i>3000</i>	<b>0</b> Mg / L
Sulfates (SO <sub>4</sub> )	<i>1500</i>	<b>UNDER 200</b> Mg / L
Chlorine (Cl <sub>2</sub> )		<b>0</b> Mg / L
Temp	<i>40-80</i>	<b>50</b> Deg
Total Dissolved Solids		<b>130</b> Mg / L

Respectfully: CHRIS KUKUS

Title: CEMENTING SUPERVISOR

Location: Grand Junction, CO

NOTICE:

This report is limited to the described sample tested. Any person using or relying on this report agrees that Halliburton shall not be liable for any loss or damage whether due to act or omission resulting from such report or its

<b>Sales Order #:</b> 9955672	<b>Line Item:</b> 10	<b>Survey Conducted Date:</b> 11/28/2012
<b>Customer:</b> WPX ENERGY ROCKY MOUNTAIN LLC-EBUS		<b>Job Type (BOM):</b> CMT SURFACE CASING BOM
<b>Customer Representative:</b> GARY VALAD		<b>API / UWI: (leave blank if unknown)</b> 05-045-21126
<b>Well Name:</b> SG		<b>Well Number:</b> 542-23
<b>Well Type:</b> Development Well	<b>Well Country:</b> United States of America	
<b>H2S Present:</b> No	<b>Well State:</b> Colorado	<b>Well County:</b> Garfield

Dear Customer,

We hope that you were satisfied with the service quality of this job performed by Halliburton. It is the aim of our management and service personnel to deliver equipment and service of a standard unmatched in the service sector of the energy industry.

Please take the time to let us know if our performance met with your satisfaction. Please be as critical as possible to ensure we constantly improve our service. Your comments are of great value to us and are intended for the exclusive use of Halliburton.

#### CUSTOMER SATISFACTION SURVEY

CATEGORY	CUSTOMER SATISFACTION RESPONSE	
Survey Conducted Date	The date the survey was conducted	11/28/2012
Survey Interviewer	The survey interviewer is the person who initiated the survey.	CHRISTOPHER KUKUS (HX35027)
Customer Participation	Did the customer participate in this survey? (Y/N)	Yes
Customer Representative	Enter the Customer representative name	GARY VALAD
HSE	Was our HSE performance satisfactory? Circle Y or N	Yes
Equipment	Were you satisfied with our Equipment? Circle Y or N	Yes
Personnel	Were you satisfied with our people? Circle Y or N	Yes
Customer Comment	Customer's Comment	GOOD JOB

CUSTOMER SIGNATURE

<b>Sales Order #:</b> 9955672	<b>Line Item:</b> 10	<b>Survey Conducted Date:</b> 11/28/2012
<b>Customer:</b> WPX ENERGY ROCKY MOUNTAIN LLC-EBUS		<b>Job Type (BOM):</b> CMT SURFACE CASING BOM
<b>Customer Representative:</b> GARY VALAD		<b>API / UWI: (leave blank if unknown)</b> 05-045-21126
<b>Well Name:</b> SG		<b>Well Number:</b> 542-23
<b>Well Type:</b> Development Well	<b>Well Country:</b> United States of America	
<b>H2S Present:</b> No	<b>Well State:</b> Colorado	<b>Well County:</b> Garfield

### KEY PERFORMANCE INDICATORS

General	
<b>Survey Conducted Date</b> The date the survey was conducted	11/28/2012

Cementing KPI Survey	
<b>Type of Job</b> Select the type of job. (Cementing or Non-Cementing)	0
<b>Select the Maximum Deviation range for this Job</b> What is the highest deviation for the job you just completed? This may not be the maximum well deviation.	Vertical
<b>Total Operating Time (hours)</b> Total Operating Hours Including Rig-up, Pumping, Rig-down. Enter in decimal format.	3
<b>HSE Incident, Accident, Injury</b> HSE Incident, Accident, Injury. This should be recordable incidents only.	No
<b>Was the job purpose achieved?</b> Was the job delivered correctly as per customer agreed design?	Yes
<b>Operating Hours (Pumping Hours)</b> Total number of hours pumping fluid on this job. Enter in decimal format.	1
<b>Customer Non-Productive Rig Time (hrs)</b> Lost time due to Halliburton in the start, execution, or completion of an ordered service or product, or delays in a follow-on service. Enter in decimal format. 0 if none.	0
<b>Type of Rig Classification Job Was Performed</b> Type Of Rig (classification) Job Was Performed On	Drilling Rig (Portable)
<b>Number Of JSAs Performed</b> Number Of Jsas Performed	6
<b>Number of Unplanned Shutdowns</b> Unplanned shutdown is when injection stops for any period of time.	0
<b>Was this a Primary Cement Job (Yes / No)</b>	Yes

<b>Sales Order #:</b> 9955672	<b>Line Item:</b> 10	<b>Survey Conducted Date:</b> 11/28/2012
<b>Customer:</b> WPX ENERGY ROCKY MOUNTAIN LLC-EBUS		<b>Job Type (BOM):</b> CMT SURFACE CASING BOM
<b>Customer Representative:</b> GARY VALAD		<b>API / UWI: (leave blank if unknown)</b> 05-045-21126
<b>Well Name:</b> SG		<b>Well Number:</b> 542-23
<b>Well Type:</b> Development Well	<b>Well Country:</b> United States of America	
<b>H2S Present:</b> No	<b>Well State:</b> Colorado	<b>Well County:</b> Garfield

Primary Cement Job= Casing job, Liner job, or Tie-back job.	
<b>Did We Run Wiper Plugs?</b> Did We Run Top And Bottom Casing Wiper Plugs?	Top
<b>Mixing Density of Job Stayed in Designed Density Range (0-100%)</b> Density Range defined as +/- .20 ppg. Calculation: Total BBLs cement mixed at designed density divided by total BBLs of cement multiplied by 100	90
<b>Was Automated Density Control Used?</b> Was Automated Density Control (ADC) Used ?	Yes
<b>Pump Rate (percent) of Job Stayed At Designed Pump Rate</b> Pump Rate range defined as +/- 1bbl/min. Calculation: Total BBLs of fluid pumped at the designed rate divided by Total BBLs of fluid pumped, multiplied by 100	90
<b>Nbr of Remedial Sqz Jobs Rqd - Competition</b> Number Of Remedial Squeeze Jobs Required After Primary Job Performed By Competition	0
<b>Nbr of Remedial Plug Jobs Rqd - HES</b> Number Of Remedial Plug Jobs Needed After Primary Plug Pumped By HES	0
<b>Nbr of Remedial Sqz Jobs Rqd - HES</b> Number Of Remedial Squeeze Jobs Required After Primary Job Performed By HES	0