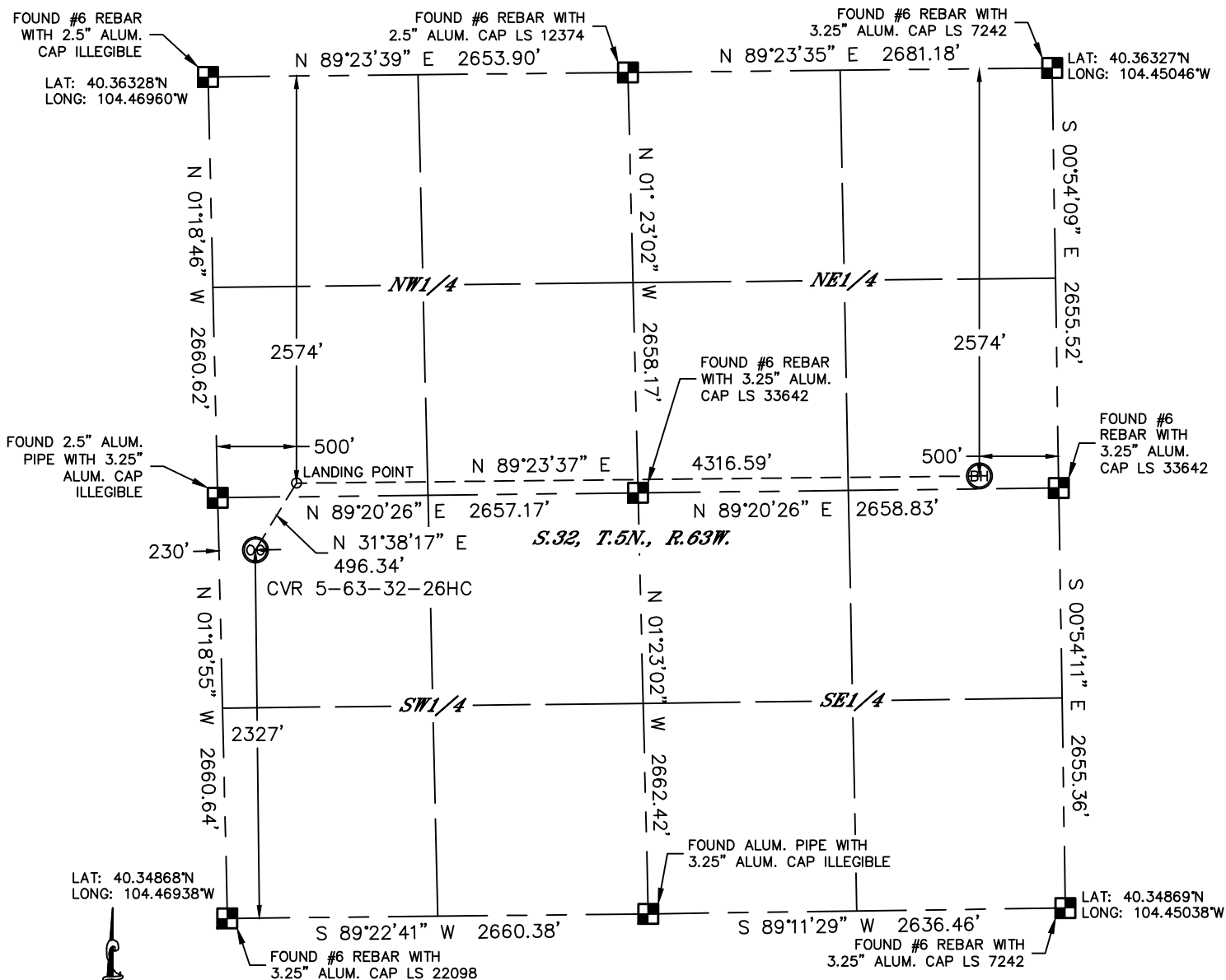


Lat40°, Inc. 1635 Foxtrail Drive, Suite 325 Loveland, CO 970-776-3321

WELL LOCATION CERTIFICATE

THIS MAP DOES NOT REPRESENT A BOUNDARY SURVEY

SECTION: 32
TOWNSHIP: 5N
RANGE: 63W



In accordance with a request from Glenn Berglund with BILL BARRETT CORPORATION Lat40', Inc. has determined the surface location of the CVR 5-63-32-26HC to be 2327' from the SOUTH line and 230' from the WEST line and the bottom hole to be 2574' from the NORTH line and 500' from the EAST line as measured at right angles from the section lines of Section 32, Township 5 North, Range 63 West of the Sixth Principal Meridian, County of Weld, State of Colorado.

I hereby state that this Well Location Certificate was prepared by me, or under my direct supervision, that the fieldwork was completed on 12/13/2012, for and on behalf of BILL BARRETT CORPORATION. That this is not a Land Survey Plat or an Improvement Survey Plat, and that it is not to be relied upon for establishment of fence, building, or other future improvement lines.

NOTE:

- 1) Bearings shown are Grid Bearings of the Colorado State Plane Coordinate System, North Zone, North American Datum 1983/2007. The lineal dimensions as contained herein are based upon the "U.S. Survey Foot."
- 2) Ground elevations are based on an observed GPS elevation (NAVD 1988 DATUM).
- 3) IMPROVEMENTS: See LOCATION DRAWING for all visible improvements within 400' of disturbed area.
- 4) SURFACE USE: CROPLAND
- 5) INSTRUMENT OPERATOR: WYATT HALL

SURFACE LOCATION

LAT: 40.35507°N (40°21'18.2"N)
LONG: 104.46865°W (104°28'07.1"W)
LAT: 40.35508°N (NAD27)
LONG: 104.46814°W (NAD27)
PDOP: 1.7
ELEV: 4578'


BOTTOM HOLE

LAT: 40.35620°N (40°21'22.3"N)
LONG: 104.45221°W (104°27'08.0"W)
LAT: 40.35622°N (NAD27)
LONG: 104.45170°W (NAD27)

LANDING POINT


LAT: 40.35622°N (40°21'22.4"N)
LONG: 104.46770°W (104°28'03.7"W)
LAT: 40.35624°N (NAD27)
LONG: 104.46719°W (NAD27)

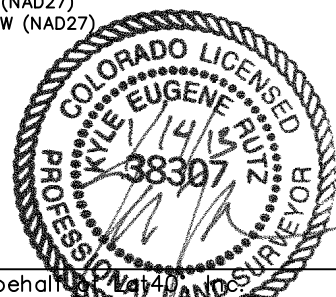
LEGEND

- = ALIQUOT MONUMENT AS DESCRIBED
 = CALCULATED POSITION

NOTE

According to Colorado law, you must commence any legal action based upon any defect in this W.L.C. within three years after you discover such defect. In no event, may any action based upon any defect in this survey be commenced more than ten years after the date of the certificate shown hereon. (13-80-105 C.R.S.)

Kyle E. Rutz-On behalf of  14140
Colorado Licensed Professional Engineer 8-515-781-1111, exp 1/14/2013
Land Surveyor No. 38307 PROJECT#: 2012174



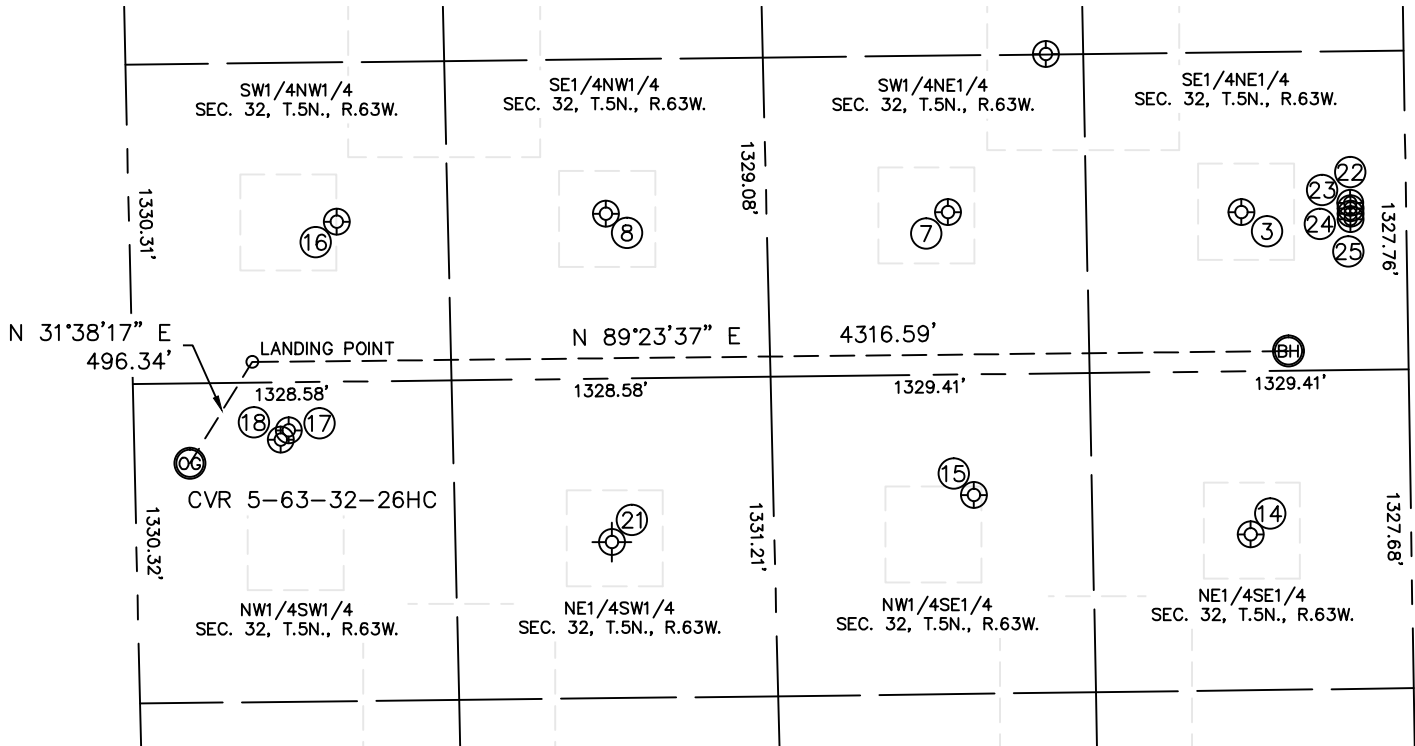


Lat40°, Inc. 1635 Foxtrail Drive, Suite 325 Loveland, CO 970-776-3321

SITE SKETCH

CVR 5-63-32-26HC

SECTION: 32
TOWNSHIP: 5N
RANGE: 63W



③

SIEBRING 42-32
SE1/4NE1/4
1994' FNL
687' FEL
LAT-40.35780°N
LONG-104.45289°W
PDOP:1.7
ELEV: 4571'

⑦

SIEBRING 32-32
SW1/4NE1/4
1981' FNL
1909' FEL
LAT-40.35784°N
LONG-104.45728°W
PDOP:1.6
ELEV: 4573'

⑧

VAN WYKE 22-32
SE1/4NW1/4
1972' FNL
1986' FWL
LAT-40.35786°N
LONG-104.46239°W
PDOP:2.2
ELEV: 4576'

⑭

HERGENREDER 32-9
NE1/4SE1/4
1977' FSL
669' FEL
LAT-40.35411°N
LONG-104.45281°W
PDOP:2.1
ELEV: 4570'

⑮

HERGENREDER BB 32-10DI
NW1/4SE1/4
2157' FSL
1819' FEL
LAT-40.35460°N
LONG-104.45694°W
PDOP:1.7
ELEV: 4569'

⑯

CAMPBELL BB 32-5
SW1/4NW1/4
1994' FNL
865' FWL
LAT-40.35781°N
LONG-104.46641°W
PDOP:1.6
ELEV: 4577'

⑰

CENTENNIAL-REIN
23-32
NW1/4SW1/4
2460' FSL
645' FWL
LAT-40.35543°N
LONG-104.46717°W
PDOP:1.7
ELEV: 4578'

⑱

CENTENNIAL-REIN 13-32
NW1/4SW1/4
2423' FSL
612' FWL
LAT-40.35533°N
LONG-104.46728°W
PDOP:1.6
ELEV: 4578'

⑳

REIN 11-32
(PLUGGED AND ABANDONED)
NE1/4SW1/4
1980' FSL (COGCC)
1980' FWL (COGCC)
LAT-40.35407°N (COGCC)
LONG-104.46248°W (COGCC)
PDOP: -N/A
ELEV: 4573' (COGCC)

㉒

SIEBRING 5-63-32-16H
SE1/1NE1/4
1960' FNL
232' FEL
LAT-40.35789°N
LONG-104.45126°W
PDOP:1.9
ELEV: 4570'

㉓

SIEBRING 5-63-32-17H
SE1/1NE1/4
1983' FNL
232' FEL
LAT-40.35782°N
LONG-104.45126°W
PDOP:1.6
ELEV: 4570'

㉔

SIEBRING 5-63-32-32H
SE1/1NE1/4
2005' FNL
232' FEL
LAT-40.35776°N
LONG-104.45126°W
PDOP:1.6
ELEV: 4570'

㉕

SIEBRING 5-63-32-48H
SE1/1NE1/4
2028' FNL
232' FEL
LAT-40.35770°N
LONG-104.45126°W
PDOP:1.3
ELEV: 4570'

