

BILL BARRETT CORP

WELD COUNTY, COLORADO

CVR 5-63-32-24H

CVR 5-63-32-24H

Wellbore #1

Plan: Design #1

Standard Planning Report

10 January, 2013



Bill Barrett Corporation

SITE DETAILS: CVR 5-63-32-24H
Wattenberg

Site Latitude: 40° 21' 18.900 N
Site Longitude: 104° 28' 7.140 W

COMPANY DETAILS: BILL BARRETT CORP

Calculation Method: Minimum Curvature
Error System: ISCWSA
Scan Method: Closest Approach 3D
Error Surface: Elliptical Conic
Warning Method: Error Ratio

Positional Uncertainty: 0.0
Convergence: 0.67
Local North: True

WELL DETAILS: CVR 5-63-32-24H

Ground Level: 4578.0
Easting: 3287424.78
Latitude: 40° 21' 18.900 N
Longitude: 104° 28' 7.140 W
Slot

+N/-S +E/-W
0.0 0.0

Northing
1373929.67

Easting
3287424.78

Latitude
40° 21' 18.900 N

Longitude
104° 28' 7.140 W

WELLBORE TARGET DETAILS (LAT/LONG)

Name	TVD	+N/-S	+E/-W	Latitude	Longitude	Shape
CVR 5-63-32-24H PBHL	6514.0	1796.4	4575.8	40° 21' 36.648 N	104° 27' 8.028 W	Point
CVR 5-63-32-24H LP	6564.0	1799.6	248.0	40° 21' 36.684 N	104° 28' 3.936 W	Point

SECTION DETAILS

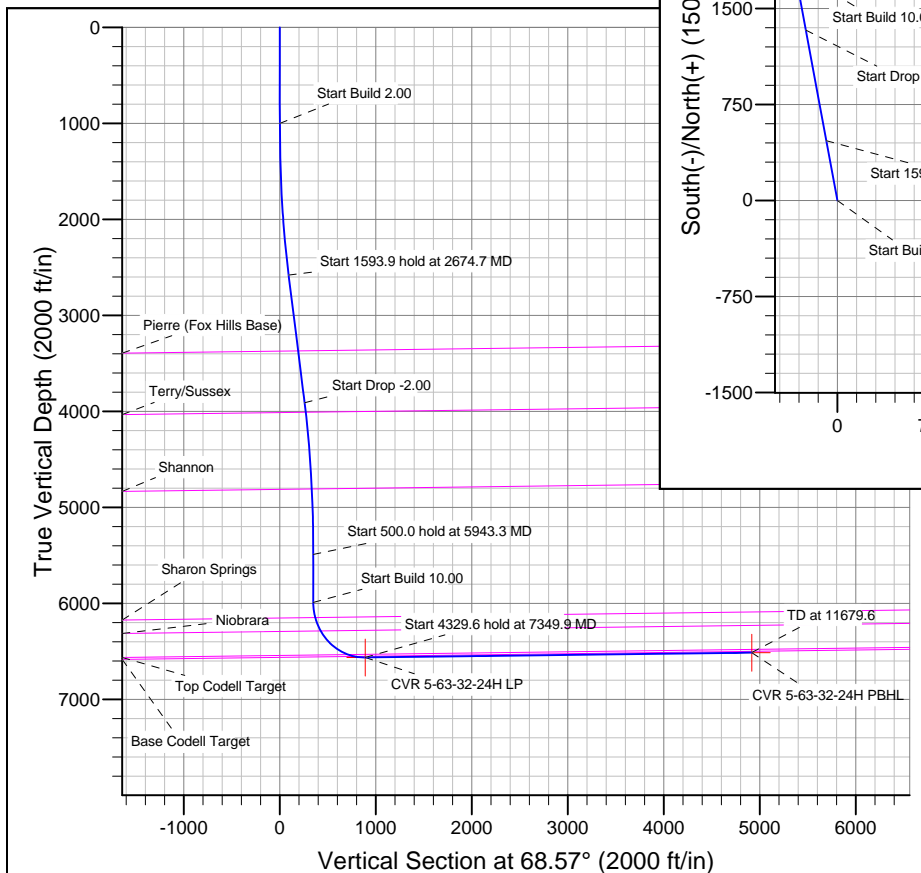
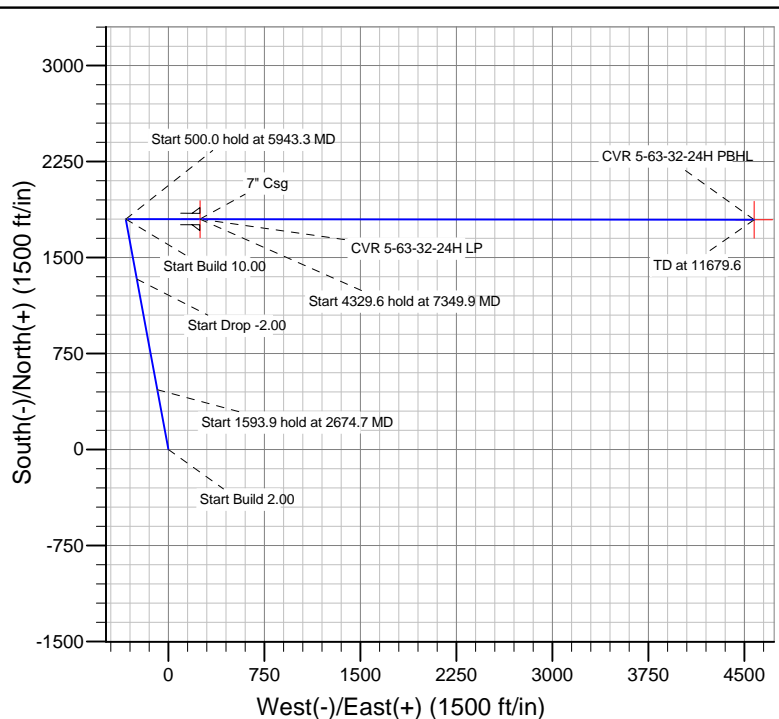
Sec	MD	Inc	Azi	TVD	+N/-S	+E/-W	DLeg	TFace	VSec	Target
1	0.0	0.00	0.00	0.0	0.0	0.0	0.00	0.00	0.0	
2	1000.0	0.00	0.00	1000.0	0.0	0.0	0.00	0.00	0.0	
3	2674.7	33.49	349.52	2580.9	467.8	-86.5	2.00	349.52	90.4	
4	4268.6	33.49	349.52	3910.2	1332.7	-246.5	0.00	0.00	257.5	
5	5943.3	0.00	0.00	5491.1	1800.5	-333.0	2.00	180.00	347.8	
6	6443.3	0.00	0.00	5991.1	1800.5	-333.0	0.00	0.00	347.8	
7	7349.9	90.66	90.05	6564.0	1800.0	246.6	10.00	90.05	887.2	
8	11679.6	90.66	90.05	6514.0	1796.2	4575.9	0.00	0.00	4915.8	CVR 5-63-32-24H PBHL

FORMATION TOP DETAILS

TVDPath	MDPath	Formation
3376.6	3628.7	Pierre (Fox Hills Base)
4017.6	4395.7	Terry/Sussex
4818.5	5264.3	Shannon
6158.3	6613.0	Sharon Springs
6297.4	6766.5	Niobrara
6542.8	7186.9	Top Codell Target
6561.4	7288.5	Base Codell Target

CASING DETAILS

TVD	MD	Name	Size
6564.0	7349.9	7" Csg	7



Azimuths to True North
Magnetic North: 8.49°

Magnetic Field
Strength: 52975.6snT
Dip Angle: 67.01°
Date: 1/9/2013
Model: IGRF2010

Bill Barrett Corp

Planning Report

Database:	Compass	Local Co-ordinate Reference:	Well CVR 5-63-32-24H
Company:	BILL BARRETT CORP	TVD Reference:	KB @ 4602.0ft (Original Well Elev)
Project:	WELD COUNTY, COLORADO	MD Reference:	KB @ 4602.0ft (Original Well Elev)
Site:	CVR 5-63-32-24H	North Reference:	True
Well:	CVR 5-63-32-24H	Survey Calculation Method:	Minimum Curvature
Wellbore:	Wellbore #1		
Design:	Design #1		

Project	WELD COUNTY, COLORADO		
Map System:	US State Plane 1983	System Datum:	Mean Sea Level
Geo Datum:	North American Datum 1983		
Map Zone:	Colorado Northern Zone		

Site		CVR 5-63-32-24H			
Site Position:		Northing:	1,373,929.68 ft	Latitude:	40° 21' 18.900 N
From:	Lat/Long	Easting:	3,287,424.78 ft	Longitude:	104° 28' 7.140 W
Position Uncertainty:	0.0 ft	Slot Radius:	"	Grid Convergence:	0.67 °

Well	CVR 5-63-32-24H					
Well Position	+N/-S	0.0 ft	Northing:	1,373,929.67 ft	Latitude:	40° 21' 18.900 N
	+E/-W	0.0 ft	Easting:	3,287,424.78 ft	Longitude:	104° 28' 7.140 W
Position Uncertainty		0.0 ft	Wellhead Elevation:	ft	Ground Level:	4,578.0 ft

Wellbore	Wellbore #1				
Magnetics	Model Name	Sample Date	Declination (°)	Dip Angle (°)	Field Strength (nT)
	IGRF2010	1/9/2013	8.49	67.01	52,976

Design	Design #1			
Audit Notes:				
Version:	Phase:	PLAN	Tie On Depth:	0.0
Vertical Section:	Depth From (TVD) (ft)	+N/-S (ft)	+E/-W (ft)	Direction (°)
	0.0	0.0	0.0	68.57

Plan Sections										
Measured Depth (ft)	Inclination (°)	Azimuth (°)	Vertical Depth (ft)	+N/-S (ft)	+E/-W (ft)	Dogleg Rate (°/100ft)	Build Rate (°/100ft)	Turn Rate (°/100ft)	TFO (°)	Target
0.0	0.00	0.00	0.0	0.0	0.0	0.00	0.00	0.00	0.00	
1,000.0	0.00	0.00	1,000.0	0.0	0.0	0.00	0.00	0.00	0.00	
2,674.7	33.49	349.52	2,580.9	467.8	-86.5	2.00	2.00	0.00	349.52	
4,268.6	33.49	349.52	3,910.2	1,332.7	-246.5	0.00	0.00	0.00	0.00	
5,943.3	0.00	0.00	5,491.1	1,800.5	-333.0	2.00	-2.00	0.00	180.00	
6,443.3	0.00	0.00	5,991.1	1,800.5	-333.0	0.00	0.00	0.00	0.00	
7,349.9	90.66	90.05	6,564.0	1,800.0	246.6	10.00	10.00	0.00	90.05	
11,679.6	90.66	90.05	6,514.0	1,796.2	4,575.9	0.00	0.00	0.00	0.00	CVR 5-63-32-24H PB

Bill Barrett Corp

Planning Report

Database:	Compass	Local Co-ordinate Reference:	Well CVR 5-63-32-24H
Company:	BILL BARRETT CORP	TVD Reference:	KB @ 4602.0ft (Original Well Elev)
Project:	WELD COUNTY, COLORADO	MD Reference:	KB @ 4602.0ft (Original Well Elev)
Site:	CVR 5-63-32-24H	North Reference:	True
Well:	CVR 5-63-32-24H	Survey Calculation Method:	Minimum Curvature
Wellbore:	Wellbore #1		
Design:	Design #1		

Planned Survey									
Measured Depth (ft)	Inclination (°)	Azimuth (°)	Vertical Depth (ft)	+N/-S (ft)	+E/-W (ft)	Vertical Section (ft)	Dogleg Rate (°/100ft)	Build Rate (°/100ft)	Turn Rate (°/100ft)
0.0	0.00	0.00	0.0	0.0	0.0	0.0	0.00	0.00	0.00
100.0	0.00	0.00	100.0	0.0	0.0	0.0	0.00	0.00	0.00
200.0	0.00	0.00	200.0	0.0	0.0	0.0	0.00	0.00	0.00
300.0	0.00	0.00	300.0	0.0	0.0	0.0	0.00	0.00	0.00
400.0	0.00	0.00	400.0	0.0	0.0	0.0	0.00	0.00	0.00
500.0	0.00	0.00	500.0	0.0	0.0	0.0	0.00	0.00	0.00
600.0	0.00	0.00	600.0	0.0	0.0	0.0	0.00	0.00	0.00
700.0	0.00	0.00	700.0	0.0	0.0	0.0	0.00	0.00	0.00
800.0	0.00	0.00	800.0	0.0	0.0	0.0	0.00	0.00	0.00
900.0	0.00	0.00	900.0	0.0	0.0	0.0	0.00	0.00	0.00
1,000.0	0.00	0.00	1,000.0	0.0	0.0	0.0	0.00	0.00	0.00
Start Build 2.00									
1,100.0	2.00	349.52	1,100.0	1.7	-0.3	0.3	2.00	2.00	0.00
1,200.0	4.00	349.52	1,199.8	6.9	-1.3	1.3	2.00	2.00	0.00
1,300.0	6.00	349.52	1,299.5	15.4	-2.9	3.0	2.00	2.00	0.00
1,400.0	8.00	349.52	1,398.7	27.4	-5.1	5.3	2.00	2.00	0.00
1,500.0	10.00	349.52	1,497.5	42.8	-7.9	8.3	2.00	2.00	0.00
1,600.0	12.00	349.52	1,595.6	61.6	-11.4	11.9	2.00	2.00	0.00
1,700.0	14.00	349.52	1,693.1	83.7	-15.5	16.2	2.00	2.00	0.00
1,800.0	16.00	349.52	1,789.6	109.1	-20.2	21.1	2.00	2.00	0.00
1,900.0	18.00	349.52	1,885.3	137.9	-25.5	26.6	2.00	2.00	0.00
2,000.0	20.00	349.52	1,979.8	169.9	-31.4	32.8	2.00	2.00	0.00
2,100.0	22.00	349.52	2,073.2	205.1	-37.9	39.6	2.00	2.00	0.00
2,200.0	24.00	349.52	2,165.2	243.5	-45.0	47.0	2.00	2.00	0.00
2,300.0	26.00	349.52	2,255.8	285.1	-52.7	55.1	2.00	2.00	0.00
2,400.0	28.00	349.52	2,344.9	329.7	-61.0	63.7	2.00	2.00	0.00
2,500.0	30.00	349.52	2,432.4	377.4	-69.8	72.9	2.00	2.00	0.00
2,600.0	32.00	349.52	2,518.1	428.0	-79.2	82.7	2.00	2.00	0.00
2,674.7	33.49	349.52	2,580.9	467.8	-86.5	90.4	2.00	2.00	0.00
Start 1593.9 hold at 2674.7 MD									
2,700.0	33.49	349.52	2,602.0	481.5	-89.1	93.0	0.00	0.00	0.00
2,800.0	33.49	349.52	2,685.4	535.8	-99.1	103.5	0.00	0.00	0.00
2,900.0	33.49	349.52	2,768.8	590.0	-109.1	114.0	0.00	0.00	0.00
3,000.0	33.49	349.52	2,852.2	644.3	-119.2	124.5	0.00	0.00	0.00
3,100.0	33.49	349.52	2,935.6	698.6	-129.2	135.0	0.00	0.00	0.00
3,200.0	33.49	349.52	3,019.0	752.8	-139.2	145.4	0.00	0.00	0.00
3,300.0	33.49	349.52	3,102.4	807.1	-149.3	155.9	0.00	0.00	0.00
3,400.0	33.49	349.52	3,185.8	861.4	-159.3	166.4	0.00	0.00	0.00
3,500.0	33.49	349.52	3,269.2	915.6	-169.3	176.9	0.00	0.00	0.00
3,600.0	33.49	349.52	3,352.6	969.9	-179.4	187.4	0.00	0.00	0.00
3,628.7	33.49	349.52	3,376.6	985.5	-182.3	190.4	0.00	0.00	0.00
Pierre (Fox Hills Base)									
3,700.0	33.49	349.52	3,436.0	1,024.2	-189.4	197.9	0.00	0.00	0.00
3,800.0	33.49	349.52	3,519.4	1,078.4	-199.5	208.3	0.00	0.00	0.00
3,900.0	33.49	349.52	3,602.8	1,132.7	-209.5	218.8	0.00	0.00	0.00
4,000.0	33.49	349.52	3,686.2	1,186.9	-219.5	229.3	0.00	0.00	0.00
4,100.0	33.49	349.52	3,769.6	1,241.2	-229.6	239.8	0.00	0.00	0.00
4,200.0	33.49	349.52	3,852.9	1,295.5	-239.6	250.3	0.00	0.00	0.00
4,268.6	33.49	349.52	3,910.2	1,332.7	-246.5	257.5	0.00	0.00	0.00
Start Drop -2.00									
4,300.0	32.87	349.52	3,936.4	1,349.6	-249.6	260.7	2.00	-2.00	0.00
4,395.7	30.95	349.52	4,017.6	1,399.3	-258.8	270.3	2.00	-2.00	0.00
Terry/Sussex									
4,400.0	30.87	349.52	4,021.4	1,401.5	-259.2	270.8	2.00	-2.00	0.00

Bill Barrett Corp

Planning Report

Database:	Compass	Local Co-ordinate Reference:	Well CVR 5-63-32-24H
Company:	BILL BARRETT CORP	TVD Reference:	KB @ 4602.0ft (Original Well Elev)
Project:	WELD COUNTY, COLORADO	MD Reference:	KB @ 4602.0ft (Original Well Elev)
Site:	CVR 5-63-32-24H	North Reference:	True
Well:	CVR 5-63-32-24H	Survey Calculation Method:	Minimum Curvature
Wellbore:	Wellbore #1		
Design:	Design #1		

Planned Survey									
Measured Depth (ft)	Inclination (°)	Azimuth (°)	Vertical Depth (ft)	+N/-S (ft)	+E/-W (ft)	Vertical Section (ft)	Dogleg Rate (°/100ft)	Build Rate (°/100ft)	Turn Rate (°/100ft)
4,500.0	28.87	349.52	4,108.1	1,450.5	-268.3	280.2	2.00	-2.00	0.00
4,600.0	26.87	349.52	4,196.5	1,496.4	-276.8	289.1	2.00	-2.00	0.00
4,700.0	24.87	349.52	4,286.5	1,539.3	-284.7	297.4	2.00	-2.00	0.00
4,800.0	22.87	349.52	4,377.9	1,579.1	-292.1	305.1	2.00	-2.00	0.00
4,900.0	20.87	349.52	4,470.7	1,615.7	-298.8	312.1	2.00	-2.00	0.00
5,000.0	18.87	349.52	4,564.7	1,649.2	-305.0	318.6	2.00	-2.00	0.00
5,100.0	16.87	349.52	4,659.9	1,679.3	-310.6	324.4	2.00	-2.00	0.00
5,200.0	14.87	349.52	4,756.1	1,706.2	-315.6	329.6	2.00	-2.00	0.00
5,264.3	13.58	349.52	4,818.5	1,721.7	-318.4	332.6	2.00	-2.00	0.00
Shannon									
5,300.0	12.87	349.52	4,853.2	1,729.8	-319.9	334.2	2.00	-2.00	0.00
5,400.0	10.87	349.52	4,951.0	1,750.0	-323.7	338.1	2.00	-2.00	0.00
5,500.0	8.87	349.52	5,049.6	1,766.8	-326.8	341.3	2.00	-2.00	0.00
5,600.0	6.87	349.52	5,148.6	1,780.3	-329.3	343.9	2.00	-2.00	0.00
5,700.0	4.87	349.52	5,248.1	1,790.3	-331.1	345.9	2.00	-2.00	0.00
5,800.0	2.87	349.52	5,347.8	1,797.0	-332.3	347.1	2.00	-2.00	0.00
5,900.0	0.87	349.52	5,447.8	1,800.2	-332.9	347.8	2.00	-2.00	0.00
5,943.3	0.00	0.00	5,491.1	1,800.5	-333.0	347.8	2.00	-2.00	0.00
Start 500.0 hold at 5943.3 MD									
6,000.0	0.00	0.00	5,547.8	1,800.5	-333.0	347.8	0.00	0.00	0.00
6,100.0	0.00	0.00	5,647.8	1,800.5	-333.0	347.8	0.00	0.00	0.00
6,200.0	0.00	0.00	5,747.8	1,800.5	-333.0	347.8	0.00	0.00	0.00
6,300.0	0.00	0.00	5,847.8	1,800.5	-333.0	347.8	0.00	0.00	0.00
6,400.0	0.00	0.00	5,947.8	1,800.5	-333.0	347.8	0.00	0.00	0.00
6,443.3	0.00	0.00	5,991.1	1,800.5	-333.0	347.8	0.00	0.00	0.00
Start Build 10.00									
6,500.0	5.67	90.05	6,047.7	1,800.5	-330.2	350.4	10.00	10.00	0.00
6,600.0	15.67	90.05	6,145.8	1,800.5	-311.7	367.6	10.00	10.00	0.00
6,613.0	16.97	90.05	6,158.3	1,800.5	-308.1	371.0	10.00	10.00	0.00
Sharon Springs									
6,700.0	25.67	90.05	6,239.3	1,800.4	-276.5	400.4	10.00	10.00	0.00
6,766.5	32.32	90.05	6,297.4	1,800.4	-244.2	430.4	10.00	10.00	0.00
Niobrara									
6,800.0	35.67	90.05	6,325.2	1,800.4	-225.5	447.9	10.00	10.00	0.00
6,900.0	45.67	90.05	6,400.9	1,800.3	-160.4	508.4	10.00	10.00	0.00
7,000.0	55.67	90.05	6,464.2	1,800.3	-83.2	580.3	10.00	10.00	0.00
7,100.0	65.67	90.05	6,513.2	1,800.2	3.9	661.3	10.00	10.00	0.00
7,186.9	74.36	90.05	6,542.8	1,800.1	85.4	737.2	10.00	10.00	0.00
Top Codell Target									
7,200.0	75.67	90.05	6,546.2	1,800.1	98.1	749.0	10.00	10.00	0.00
7,288.5	84.52	90.05	6,561.4	1,800.0	185.2	830.1	10.00	10.00	0.00
Base Codell Target									
7,300.0	85.67	90.05	6,562.4	1,800.0	196.7	840.7	10.00	10.00	0.00
7,349.9	90.66	90.05	6,564.0	1,800.0	246.5	887.1	10.00	10.00	0.00
Start 4329.6 hold at 7349.9 MD - 7" Csg									
7,400.0	90.66	90.05	6,563.4	1,799.9	296.6	933.7	0.01	0.01	0.00
7,500.0	90.66	90.05	6,562.3	1,799.9	396.6	1,026.8	0.00	0.00	0.00
7,600.0	90.66	90.05	6,561.1	1,799.8	496.6	1,119.8	0.00	0.00	0.00
7,700.0	90.66	90.05	6,560.0	1,799.7	596.6	1,212.9	0.00	0.00	0.00
7,800.0	90.66	90.05	6,558.8	1,799.6	696.6	1,305.9	0.00	0.00	0.00
7,900.0	90.66	90.05	6,557.7	1,799.5	796.6	1,399.0	0.00	0.00	0.00
8,000.0	90.66	90.05	6,556.5	1,799.4	896.6	1,492.0	0.00	0.00	0.00
8,100.0	90.66	90.05	6,555.4	1,799.3	996.6	1,585.1	0.00	0.00	0.00

Bill Barrett Corp

Planning Report

Database:	Compass	Local Co-ordinate Reference:	Well CVR 5-63-32-24H
Company:	BILL BARRETT CORP	TVD Reference:	KB @ 4602.0ft (Original Well Elev)
Project:	WELD COUNTY, COLORADO	MD Reference:	KB @ 4602.0ft (Original Well Elev)
Site:	CVR 5-63-32-24H	North Reference:	True
Well:	CVR 5-63-32-24H	Survey Calculation Method:	Minimum Curvature
Wellbore:	Wellbore #1		
Design:	Design #1		

Planned Survey									
Measured Depth (ft)	Inclination (°)	Azimuth (°)	Vertical Depth (ft)	+N/-S (ft)	+E/-W (ft)	Vertical Section (ft)	Dogleg Rate (°/100ft)	Build Rate (°/100ft)	Turn Rate (°/100ft)
8,200.0	90.66	90.05	6,554.2	1,799.2	1,096.6	1,678.1	0.00	0.00	0.00
8,300.0	90.66	90.05	6,553.0	1,799.2	1,196.6	1,771.2	0.00	0.00	0.00
8,400.0	90.66	90.05	6,551.9	1,799.1	1,296.6	1,864.2	0.00	0.00	0.00
8,500.0	90.66	90.05	6,550.7	1,799.0	1,396.6	1,957.3	0.00	0.00	0.00
8,600.0	90.66	90.05	6,549.6	1,798.9	1,496.6	2,050.3	0.00	0.00	0.00
8,700.0	90.66	90.05	6,548.4	1,798.8	1,596.6	2,143.4	0.00	0.00	0.00
8,800.0	90.66	90.05	6,547.3	1,798.7	1,696.6	2,236.4	0.00	0.00	0.00
8,900.0	90.66	90.05	6,546.1	1,798.6	1,796.5	2,329.5	0.00	0.00	0.00
9,000.0	90.66	90.05	6,545.0	1,798.5	1,896.5	2,422.5	0.00	0.00	0.00
9,100.0	90.66	90.05	6,543.8	1,798.5	1,996.5	2,515.6	0.00	0.00	0.00
9,200.0	90.66	90.05	6,542.6	1,798.4	2,096.5	2,608.6	0.00	0.00	0.00
9,300.0	90.66	90.05	6,541.5	1,798.3	2,196.5	2,701.7	0.00	0.00	0.00
9,400.0	90.66	90.05	6,540.3	1,798.2	2,296.5	2,794.7	0.00	0.00	0.00
9,500.0	90.66	90.05	6,539.2	1,798.1	2,396.5	2,887.8	0.00	0.00	0.00
9,600.0	90.66	90.05	6,538.0	1,798.0	2,496.5	2,980.8	0.00	0.00	0.00
9,700.0	90.66	90.05	6,536.9	1,797.9	2,596.5	3,073.9	0.00	0.00	0.00
9,800.0	90.66	90.05	6,535.7	1,797.8	2,696.5	3,166.9	0.00	0.00	0.00
9,900.0	90.66	90.05	6,534.6	1,797.8	2,796.5	3,260.0	0.00	0.00	0.00
10,000.0	90.66	90.05	6,533.4	1,797.7	2,896.5	3,353.0	0.00	0.00	0.00
10,100.0	90.66	90.05	6,532.2	1,797.6	2,996.5	3,446.1	0.00	0.00	0.00
10,200.0	90.66	90.05	6,531.1	1,797.5	3,096.5	3,539.1	0.00	0.00	0.00
10,300.0	90.66	90.05	6,529.9	1,797.4	3,196.5	3,632.2	0.00	0.00	0.00
10,400.0	90.66	90.05	6,528.8	1,797.3	3,296.4	3,725.2	0.00	0.00	0.00
10,500.0	90.66	90.05	6,527.6	1,797.2	3,396.4	3,818.3	0.00	0.00	0.00
10,600.0	90.66	90.05	6,526.5	1,797.1	3,496.4	3,911.3	0.00	0.00	0.00
10,700.0	90.66	90.05	6,525.3	1,797.1	3,596.4	4,004.4	0.00	0.00	0.00
10,800.0	90.66	90.05	6,524.2	1,797.0	3,696.4	4,097.4	0.00	0.00	0.00
10,900.0	90.66	90.05	6,523.0	1,796.9	3,796.4	4,190.5	0.00	0.00	0.00
11,000.0	90.66	90.05	6,521.8	1,796.8	3,896.4	4,283.5	0.00	0.00	0.00
11,100.0	90.66	90.05	6,520.7	1,796.7	3,996.4	4,376.6	0.00	0.00	0.00
11,200.0	90.66	90.05	6,519.5	1,796.6	4,096.4	4,469.6	0.00	0.00	0.00
11,300.0	90.66	90.05	6,518.4	1,796.5	4,196.4	4,562.7	0.00	0.00	0.00
11,400.0	90.66	90.05	6,517.2	1,796.5	4,296.4	4,655.7	0.00	0.00	0.00
11,500.0	90.66	90.05	6,516.1	1,796.4	4,396.4	4,748.8	0.00	0.00	0.00
11,600.0	90.66	90.05	6,514.9	1,796.3	4,496.4	4,841.8	0.00	0.00	0.00
11,679.6	90.66	90.05	6,514.0	1,796.2	4,575.9	4,915.8	0.00	0.00	0.00

Targets									
Target Name	Dip Angle (°)	Dip Dir. (°)	TVD (ft)	+N/-S (ft)	+E/-W (ft)	Northing (ft)	Easting (ft)	Latitude	Longitude
- hit/miss target									
- Shape									
CVR 5-63-32-24H LP	0.00	0.00	6,564.0	1,799.6	248.0	1,375,732.05	3,287,651.85	40° 21' 36.684 N	104° 28' 3.936 W
- plan misses by 0.4ft at 7351.4ft MD (6564.0 TVD, 1800.0 N, 248.0 E)									
- Point									
CVR 5-63-32-24H PBHL	0.00	0.00	6,514.0	1,796.4	4,575.8	1,375,779.17	3,291,979.41	40° 21' 36.648 N	104° 27' 8.028 W
- plan misses by 0.2ft at 11679.5ft MD (6514.0 TVD, 1796.2 N, 4575.8 E)									
- Point									

Bill Barrett Corp

Planning Report

Database:	Compass	Local Co-ordinate Reference:	Well CVR 5-63-32-24H
Company:	BILL BARRETT CORP	TVD Reference:	KB @ 4602.0ft (Original Well Elev)
Project:	WELD COUNTY, COLORADO	MD Reference:	KB @ 4602.0ft (Original Well Elev)
Site:	CVR 5-63-32-24H	North Reference:	True
Well:	CVR 5-63-32-24H	Survey Calculation Method:	Minimum Curvature
Wellbore:	Wellbore #1		
Design:	Design #1		

Formations						
Measured Depth (ft)	Vertical Depth (ft)	Name	Lithology	Dip (°)	Dip Direction (°)	
3,628.7	3,374.0	Pierre (Fox Hills Base)		-0.80	90.05	
4,395.7	4,014.0	Terry/Sussex		-0.80	90.05	
5,264.3	4,814.0	Shannon		-0.80	90.05	
6,613.0	6,154.0	Sharon Springs		-0.80	90.05	
6,766.5	6,294.0	Niobrara		-0.80	90.05	
7,186.9	6,544.0	Top Codell Target		-0.80	90.05	
7,288.5	6,564.0	Base Codell Target		-0.80	90.05	

Plan Annotations					
Measured Depth (ft)	Vertical Depth (ft)	Local Coordinates			
		+N/-S (ft)	+E/-W (ft)	Comment	
1,000.0	1,000.0	0.0	0.0	Start Build 2.00	
2,674.7	2,580.9	467.8	-86.5	Start 1593.9 hold at 2674.7 MD	
4,268.6	3,910.2	1,332.7	-246.5	Start Drop -2.00	
5,943.3	5,491.1	1,800.5	-333.0	Start 500.0 hold at 5943.3 MD	
6,443.3	5,991.1	1,800.5	-333.0	Start Build 10.00	
7,349.9	6,564.0	1,800.0	246.6	Start 4329.6 hold at 7349.9 MD	
11,679.6	6,514.0	1,796.2	4,575.9	TD at 11679.6	