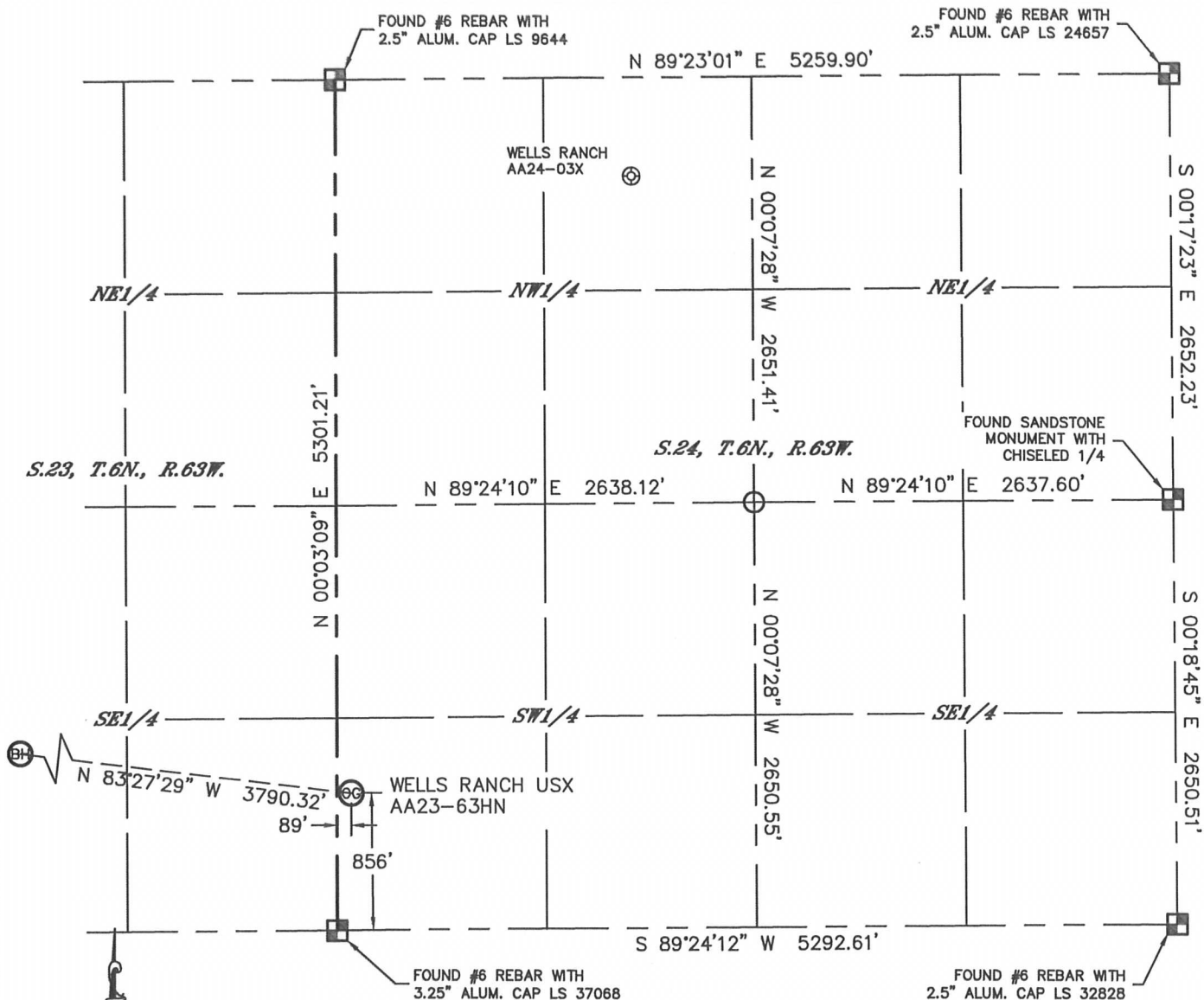


# WELL LOCATION CERTIFICATE

THIS MAP DOES NOT REPRESENT A BOUNDARY SURVEY

SECTION: 24  
TOWNSHIP: 6N  
RANGE: 63W



In accordance with a request from Greg Wilson with Noble Energy Inc. Lat40°, Inc. has determined the surface location of the WELLS RANCH USX AA23-63HN to be 856' from the SOUTH line and 89' from the WEST line as measured at right angles from the section lines of Section 24, Township 6 North, Range 63 West and the bottom hole to be 1320' from the SOUTH line and 1625' from the WEST line as measured at right angles from the section lines of Section 23, Township 6 North, Range 63 West of the Sixth Principal Meridian, County of Weld, State of Colorado.

I hereby state that this Well Location Certificate was prepared by me, or under my direct supervision, that the fieldwork was completed on 6/21/2012, for and on behalf of Noble Energy Inc. That this is not a Land Survey Plat or an Improvement Survey Plat, and that it is not to be relied upon for establishment of fence, building, or other future improvement lines.

## SURFACE LOCATION

LAT: 40.46709°N  
LONG: 104.39424°W  
PDOP: 1.8  
ELEV: 4836'  
1/4, 1/4: SW1/4SW1/4  
NEAREST PROPERTY LINE: 89' WEST

## BOTTOM HOLE

LAT: 40.46840°N  
LONG: 104.40775°W

## NOTE:

- 1) Bearings shown are Grid Bearings of the Colorado State Plane Coordinate System, North Zone, North American Datum 1983/2007. The lineal dimensions as contained herein are based upon the "U.S. Survey Foot."
- 2) Ground elevations are based on an observed GPS elevation (NAVD 1988 DATUM).
- 3) NEAREST EXISTING WELL: WELLS RANCH AA24-03X, 4243'
- 4) IMPROVEMENTS: See LOCATION DRAWING for all visible Improvements within 400' of disturbed area.
- 5) SURFACE USE: RANGELAND
- 6) INSTRUMENT OPERATOR: ADAM KELLY

## NOTE

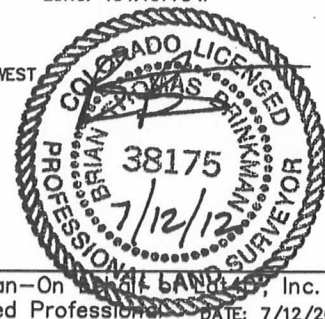
According to Colorado law, you must commence any legal action based upon any defect in this W.L.C. within three years after you discover such defect. In no event, may any action based upon any defect in this survey be commenced more than ten years after the date of the certificate shown hereon. (13-80-105 C.R.S.)

## LEGEND

- = ALIQUOT MONUMENT AS DESCRIBED
- = CALCULATED POSITION

## SHEET 1 OF 2

Brian T. Brinkman-On Behalf of Lat40°, Inc.  
Colorado Licensed Professional Land Surveyor No. 38175  
DATE: 7/12/2012  
PROJECT#: 2012094

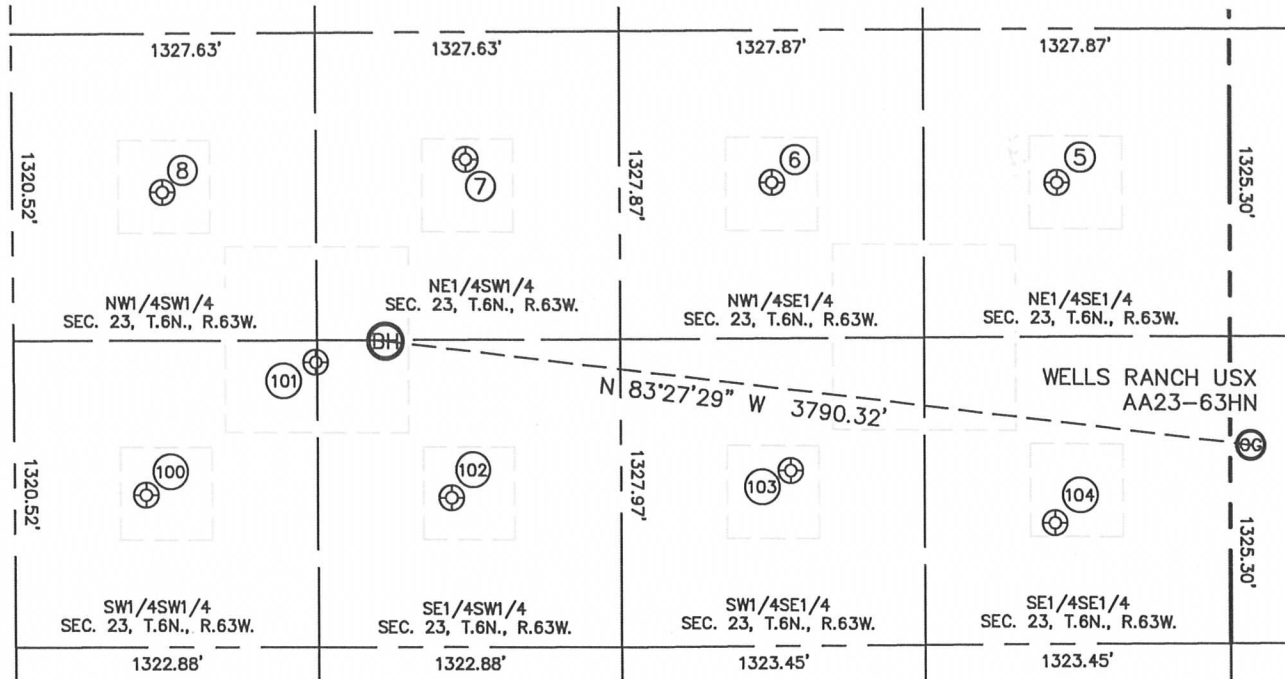




# SITE SKETCH

## WELLS RANCH USX AA23-63HN

SECTION: 24  
TOWNSHIP: 6N  
RANGE: 63W



⑤

WELLS RANCH USX  
AA23-09  
NE1/4SE1/4  
1989' FSL  
745' FEL  
LAT-40.47020°N  
LONG-104.39718°W  
PDOP: 2.3  
ELEV: 4816'

⑥

WELLS RANCH USX  
AA23-10  
NW1/4SE1/4  
1998' FSL  
1990' FEL  
LAT-40.47023°N  
LONG-104.40165°W  
PDOP: 2.3  
ELEV: 4796'

⑦

WELLS RANCH USX  
AA23-11  
NE1/4SW1/4  
2102' FSL  
1980' FWL  
LAT-40.47054°N  
LONG-104.40645°W  
PDOP: 2.2  
ELEV: 4800'

⑧

WELLS RANCH USX  
AA23-12  
NW1/4SW1/4  
1961' FSL  
656' FWL  
LAT-40.47019°N  
LONG-104.41121°W  
PDOP: 2.4  
ELEV: 4799'

⑩①

WELLS RANCH  
USX AA23-13  
SW1/4SW1/4  
656' FSL  
573' FWL  
LAT-40.46661°N  
LONG-104.41154°W  
PDOP: 1.6  
ELEV: 4812'

⑩①

WELLS RANCH  
USX AA23-25  
SW1/4SW1/4  
1229' FSL  
1319' FWL  
LAT-40.46816°N  
LONG-104.40885°W  
PDOP: 1.6  
ELEV: 4806'

⑩②

WELLS RANCH  
USX AA23-14  
SE1/4SW1/4  
644' FSL  
1908' FWL  
LAT-40.46654°N  
LONG-104.40675°W  
PDOP: 0.8  
ELEV: 4818'

⑩③

WELLS RANCH  
USX AA23-15  
SW1/4SE1/4  
756' FSL  
1910' FEL  
LAT-40.46683°N  
LONG-104.40142°W  
PDOP: 1.6  
ELEV: 4817'

⑩④

WELLS RANCH  
USX AA23-16  
SE1/4SE1/4  
524' FSL  
755' FEL  
LAT-40.46618°N  
LONG-104.39729°W  
PDOP: 1.6  
ELEV: 4820'

