

1700 Broadway  
Suite 650  
Denver, Colorado 80290



Shannon Hartnett  
Permitting Agent  
Tel: 303.830.9893  
E-mail: shartnett@gwogco.com

January 21, 2013

Colorado Oil and Gas Conservation Commission  
The Chancery Building  
1120 Lincoln Street, Suite 801  
Denver, Colorado 80203

RE: **Proposed Wellbore Spacing Unit**  
**Campbell JF 17-6D (Surface 1512' FNL and 1525' FEL) Sec. 17 (Bottom 1320' FNL and 2240' FEL) Sec. 17**  
**Campbell JF 17-14D (Surface 1512' FNL and 1480' FEL) Sec. 17 (Bottom 2640' FNL and 1320' FEL) Sec. 17**  
**Campbell JF 17-7D (Surface 1513' FNL and 1450' FEL) Sec. 17 (Bottom 1320' FNL and 1320' FEL) Sec. 17**

Niobrara/Codell New Drills  
Township 2 North, Range 65 West, 6<sup>th</sup> P.M.  
Section 17: SW/4NE/4  
Weld County, Colorado

Dear Director:

Great Western Oil and Gas Company, LLC is planning to drill the above captioned boundary wells in accordance with the provisions of COGCC Rule 318(l)(2).

Great Western proposed wellbore spacing units consists of:

- NE $\frac{1}{4}$ NW $\frac{1}{4}$ , NW $\frac{1}{4}$ NE $\frac{1}{4}$ , SE $\frac{1}{4}$ NW $\frac{1}{4}$ , SE $\frac{1}{4}$ NE $\frac{1}{4}$  of Section 17 for **Campbell JF 17-6D**
- NE/4 of Section 17 for **Campbell JF 17-7D**
- SW $\frac{1}{4}$ NE $\frac{1}{4}$ , SE $\frac{1}{4}$ SE $\frac{1}{4}$ , NW $\frac{1}{4}$ SE $\frac{1}{4}$ , & NE $\frac{1}{4}$ NE $\frac{1}{4}$  of Section 17 for **Campbell JF 17-14D**

Great Western Oil and Gas Company, LLC respectfully requests that the COGCC review the enclosed plat illustrating the proposed wellbore spacing unit.

Respectfully,

Shannon Hartnett  
Permitting Agent  
Great Western Oil and Gas Company, LLC

**GREAT WESTERN OIL & GAS COMPANY**

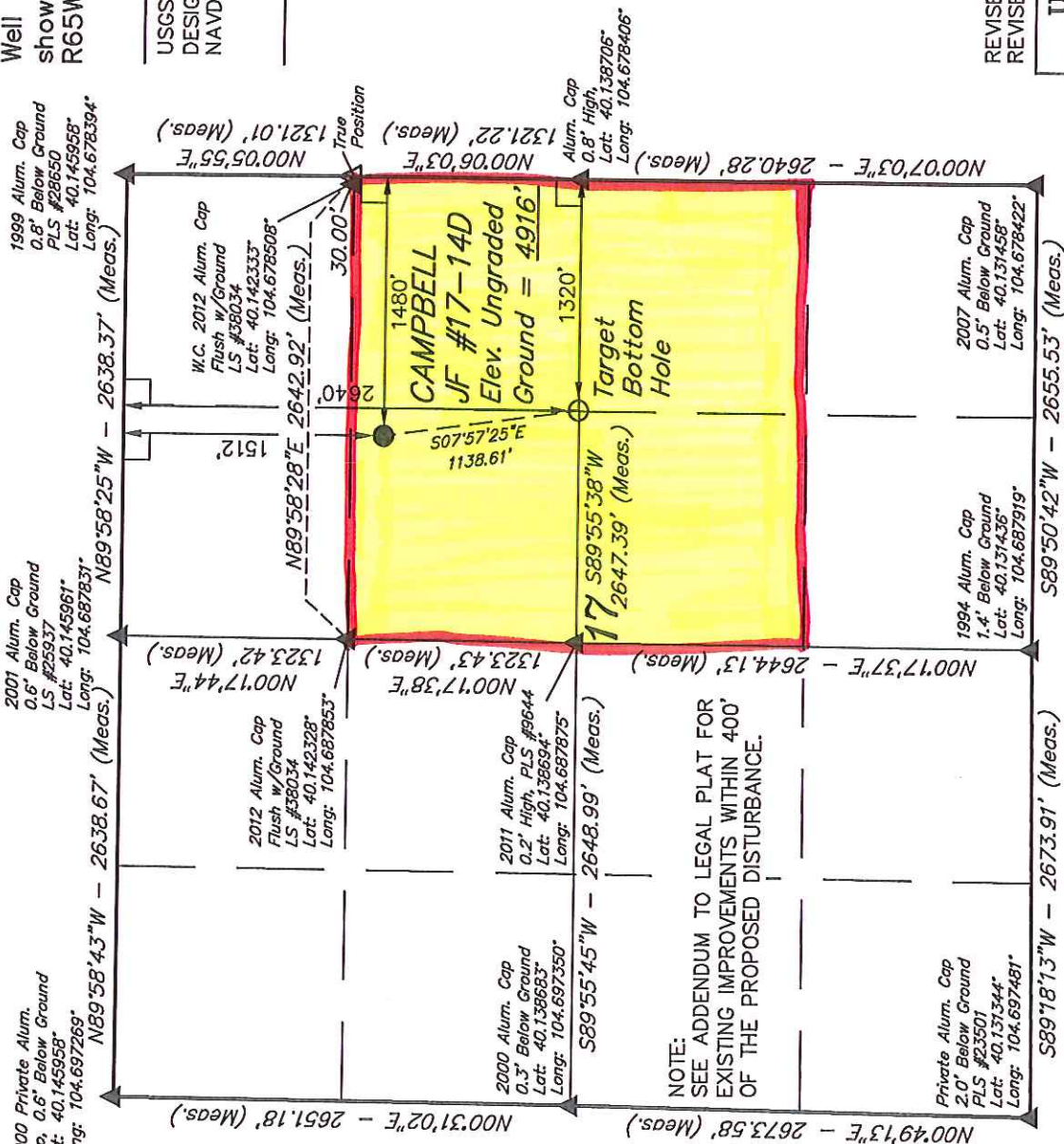
Well location, CAMPBELL JF #17-14D, located as shown in the SW 1/4 NE 1/4 of Section 17, T2N, R65W, 6th P.M., Weld County, Colorado.

## BASIS OF ELEVATION

USGS COOPERATIVE BASE NETWORK CONTROL STATION,  
DESIGNATION 'HUDSON'. NGS DATA SHEET LISTS THE  
NAVD 88 ELEVATION AS BEING 4999 FEET

## BASIS OF BEARINGS

BASIS OF BEARINGS IS A G.P.S. OBSERVATION.



NOTE:  
SEE ADDENDUM TO LEGAL PLAT FOR  
EXISTING IMPROVEMENTS WITHIN 400'  
OF THE PROPOSED DISTURBANCE.

**LEGEND:**

- L = 90° SYMBOL  
 ● = PROPOSED WELL HEAD.  
 ▲ = SECTION CORNERS LOCAL  
 △ = SECTION CORNERS RE-  
 ESTABLISHED. (Not Set on  
 Ground.)

PDOP = 1.7

NAD 83 (TARGET BOTTOM HOLE)		NAD 83 (SURFACE LOCATION)	
LATITUDE = 40°08'19.36"	(40.138714)	LATITUDE = 40°08'30.51"	(40.141808)
LONGITUDE = 104°40'59.27"	(104.683328)	LONGITUDE = 104°41'01.30"	(104.683694)
NAD 27 (TARGET BOTTOM HOLE)		NAD 27 (SURFACE LOCATION)	
LATITUDE = 40°08'19.43"	(40.138731)	LATITUDE = 40°08'30.57"	(40.141825)
LONGITUDE = 104°40'57.38"	(104.682606)	LONGITUDE = 104°40'59.42"	(104.683172)

REVISED: 12-17-12  
REVISED: 10-04-12

UNTAH  
ENGINEERING & LAND  
SURVEYING

85 SOUTH 200 EAST - VERNAL, UTAH 84078

(435) 789-1017

SCALE	1" = 1000'	DATE SURVEYED:	DATE DRAWN:
PARTY	D.N. G.W. J.W.	09-25-12	09-28-12
WEATHER	WARM	REFERENCES	G.L.O. PLAT
		FILE	GREAT WESTERN OIL & GAS COMPANY

# CERTIFICATE

THIS IS TO CERTIFY THAT THE ABOVE STATEMENT WAS PREPARED FROM  
THE FIELD NOTES OF ACTUAL SURVEYS MADE BY ME OR UNDER MY  
SUPERVISION AND THAT THE SAME ARE TRUE AND CORRECT TO THE  
BEST OF MY KNOWLEDGE AND BELIEF.

REGISTERED LAND SURVEYOR  
REGISTRATION NO. 17492  
STATE OF COLORADO