

1700 Broadway
Suite 650
Denver, Colorado 80290



Shannon Hartnett
Permitting Agent
Tel: 303.830.9893
E-mail: shartnett@gwogco.com

January 21, 2013

Colorado Oil and Gas Conservation Commission
The Chancery Building
1120 Lincoln Street, Suite 801
Denver, Colorado 80203

RE: 30 Day Certification Letter
Campbell JF 17-6D (Surface 1512' FNL and 1525' FEL) Sec. 17 (Bottom 1320' FNL and 2240' FEL) Sec. 17
Campbell JF 17-14D (Surface 1512' FNL and 1480' FEL) Sec. 17 (Bottom 2640' FNL and 1320' FEL) Sec. 17
Campbell JF 17-7D (Surface 1513' FNL and 1450' FEL) Sec. 17 (Bottom 1320' FNL and 1320' FEL) Sec. 17

Niobrara/Codell New Drills
Township 2 North, Range 65 West, 6th P.M.
Section 17: SW/4NE/4
Weld County, Colorado

Dear Director:

Great Western Oil and Gas Company, LLC hereby certifies to the Director that a thirty (30) day notice has been given by certified mail to all owners in the proposed wellbore spacing unit consisting of:

- NE¼NW¼, NW¼NE¼, SE¼NW¼, SE¼NE¼ of Section 17 for **Campbell JF 17-6D**
- NE/4 of Section 17 for **Campbell JF 17-7D**
- SW¼NE¼, SE¼SE¼, NW¼SE¼, & NE¼NE¼ of Section 17 for **Campbell JF 17-14D**

We have not received any objections to such well locations or proposed spacing unit, therefore Great Western hereby requests the Director to approve the infill wells.

If you should have any questions or concerns regarding this permit, please contact the undersigned at 303-830-9893.

Respectfully,

Shannon Hartnett
Permitting Agent
Great Western Oil and Gas Company, LLC

T2N, R65W, 6th P.M.

GREAT WESTERN OIL & GAS COMPANY

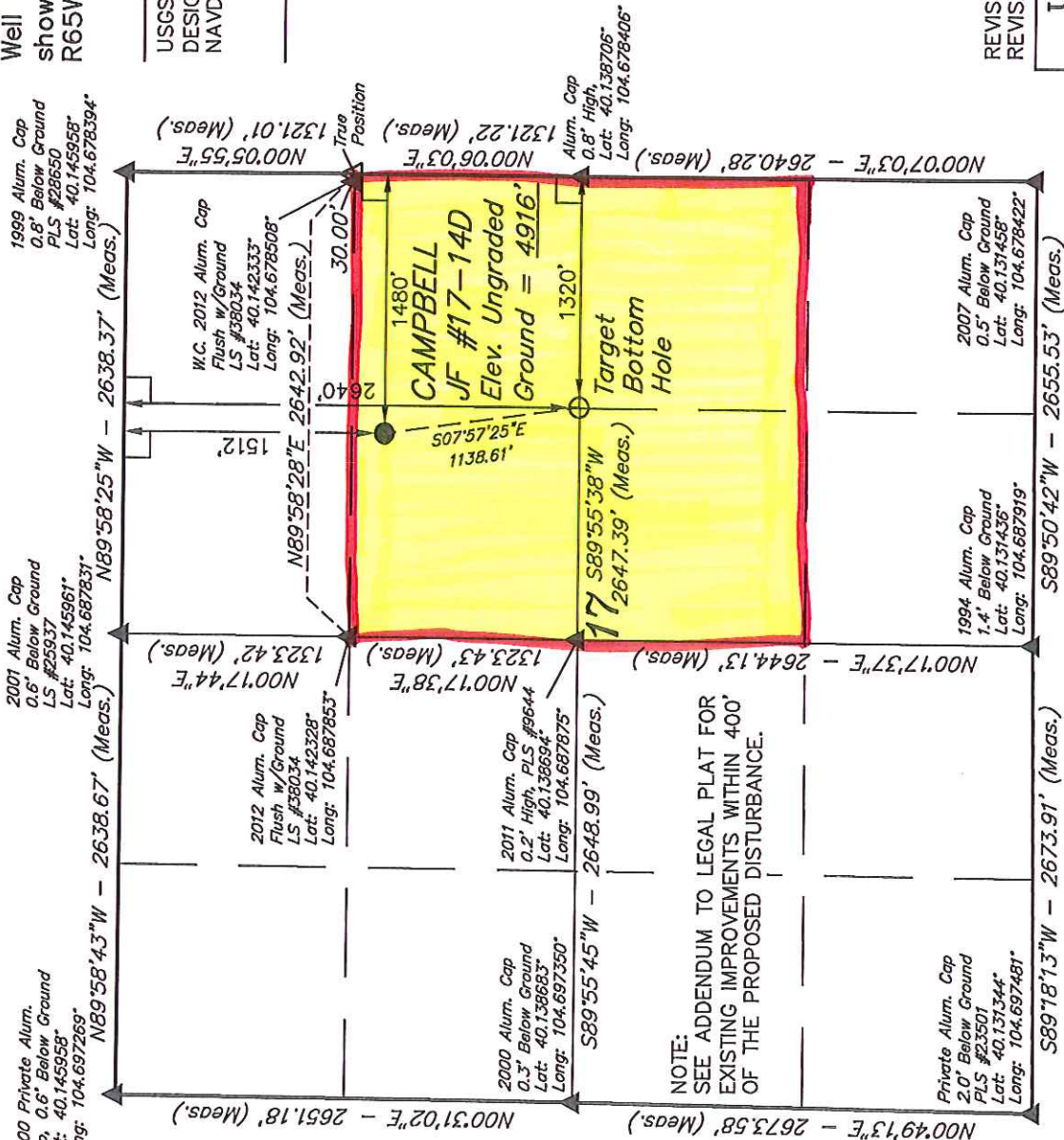
Well location, CAMPBELL JF #17-14D, located as shown in the SW 1/4 NE 1/4 of Section 17, T2N, R65W, 6th P.M., Weld County, Colorado.

BASIS OF ELEVATION

USGS COOPERATIVE BASE NETWORK CONTROL STATION, DESIGNATION 'HUDSON'. NGS DATA SHEET LISTS THE NAVD 88 ELEVATION AS BEING 4999 FEET

BASIS OF BEARINGS

BASIS OF BEARINGS IS A G.P.S. OBSERVATION.



NOTE:
SEE ADDENDUM TO LEGAL PLAT FOR
EXISTING IMPROVEMENTS WITHIN 400'
OF THE PROPOSED DISTURBANCE.

LEGEND:

- = 90° SYMBOL
- = PROPOSED WELL HEAD.
- ▲ = SECTION CORNERS LOCATED.
- △ = SECTION CORNERS RE-ESTABLISHED. (Not Set on Ground.)

PDOP = 1.7

NAD 83 (TARGET BOTTOM HOLE)		NAD 83 (SURFACE LOCATION)	
LATITUDE = 40°08'19.37" (40.138714)		LATITUDE = 40°08'30.51" (40.141808)	
LONGITUDE = 104°40'59.26" (104.683128)		LONGITUDE = 104°41'01.30" (104.683694)	
NAD 27 (TARGET BOTTOM HOLE)		NAD 27 (SURFACE LOCATION)	
LATITUDE = 40°08'19.43" (40.138731)		LATITUDE = 40°08'30.57" (40.141825)	
LONGITUDE = 104°40'57.38" (104.682606)		LONGITUDE = 104°40'59.42" (104.683172)	

CERTIFICATE

THIS IS TO CERTIFY THAT THE ABOVE PLAT WAS PREPARED FROM FIELD NOTES OF ACTUAL SURVEYS MADE BY ME OR UNDER MY SUPERVISION AND THAT THE SAME ARE TRUE AND CORRECT TO THE BEST OF MY KNOWLEDGE AND BELIEF.

REVISED: 12-17-12
REVISED: 10-04-12

REGISTERED LAND SURVEYOR
REGISTRATION NO. 12492
STATE OF COLORADO
09-17-12

UNTAH ENGINEERING & LAND SURVEYING

85 SOUTH 200 EAST - VERNAL, UTAH 84078

(435) 789-1017

SCALE	1" = 1000'	DATE SURVEYED:	09-25-12	DATE DRAWN:	09-28-12
PARTY	D.N. G.W. J.W.	REFERENCES	G.L.O. PLAT		
WEATHER	WARM	FILE	GREAT WESTERN OIL & GAS COMPANY		