

---

# **CONQUEST OIL**

---

**SWD #C4A  
DJ BASIN  
Weld County , Colorado**

**Cement Multiple Stages  
02-Nov-2012**

**Job Site Documents**

## The Road to Excellence Starts with Safety

The Road to Excellence Starts with Safety			
Sold To #: 314722	Ship To #: 2964382	Quote #:	Sales Order #: 900045218
Customer: CONQUEST OIL		Customer Rep: Bengé, Red	
Well Name: SWD		Well #: #C4A	API/UWI #: 05-123-35841
Field: DJ BASIN	City (SAP): UNKNOWN	County/Parish: Weld	State: Colorado
Legal Description: Section 26 Township 6N Range 65W			
Lat: N 40.453 deg. OR N 40 deg. 27 min. 9.108 secs.		Long: W 104.628 deg. OR W -105 deg. 22 min. 20.424 secs.	
Job Purpose: Cement Multiple Stages			
Well Type: Disposal Well		Job Type: Cement Multiple Stages	
Sales Person: AARON, WESLEY		Srvc Supervisor: FANTASIA, JOSEPH	MBU ID Emp #: 485445

## Job Personnel

HES Emp Name	Exp Hrs	Emp #	HES Emp Name	Exp Hrs	Emp #	HES Emp Name	Exp Hrs	Emp #
BAMMER, JORDAN Blaine	12.5	526575	CONGDON, RICHARD S.	12.5	320306	FANTASIA, JOSEPH Brandon	12.5	485445
MEADOWS, DANIEL Graham	12.5	500668	MULLER, MICHEL B	12.5	529830	SANSONI, NICHOLAS Sterling J	12.5	502962
SMITH, AARON David	12.5	518187						

## Equipment

HES Unit #	Distance-1 way	HES Unit #	Distance-1 way	HES Unit #	Distance-1 way	HES Unit #	Distance-1 way
10866493 C	40 mile	11036295 C	40 mile	11064535	40 mile	11410470C	40 mile
11532305	40 mile	11645065	40 mile	12010169	40 mile	5707C	40 mile

## Job Hours

Date	On Location Hours	Operating Hours	Date	On Location Hours	Operating Hours	Date	On Location Hours	Operating Hours
12-2-2012	12.5	10						

**TOTAL** Total is the sum of each column separately

## Job

Formation Name	Top	Bottom	Called Out	Date	Time	Time Zone
Formation Depth (MD)			On Location	02 - Dec - 2012	03:00	MST
Form Type	BHST		Job Started	02 - Dec - 2012	06:30	MST
Job depth MD	9062. ft	Job Depth TVD	Job Completed	02 - Dec - 2012	09:30	MST
Water Depth		Wk Ht Above Floor	Departed Loc	02 - Nov - 2012	17:30	MST
Perforation Depth (MD)	From	To		02 - Dec - 2012	19:00	MST

## Well Data

Description	New / Used	Max pressure psig	Size in	ID in	Weight lbm/ft	Thread	Grade	Top MD ft	Bottom MD ft	Top TVD ft	Bottom TVD ft
8 3/4" Open Hole Section				8.75				480.	9078.		
7" Cement Stage Tool	Unknown		7.	6.366	26.			7457.	7457.		
7" Intermediate Casing	Unknown		7.	6.366	26.		N-80	.	9062.		
9 5/8" Surface Casing	Unknown		9.625	8.921	36.			.	480.		

Sales/Rental/3<sup>rd</sup> Party (HES)

Description	Qty	Qty uom	Depth	Supplier
MILEAGE FOR CEMENTING CREW,ZI	70	MI		
ZI FUEL SURCHG-CARS/PICKUPS<1 1/2TON	70	MI		
SHOE,FLT,7 8RD,2-3/4 SS II VLV	1	EA		
CLR,FLT,7 LG 8RD 23-26PPF,2-3/4	1	EA		
CTRZR ASSY,API,7 CSG X 9 .88 H	73	EA		
Description	Qty	Qty uom	Depth	Supplier



CLAMP - LIMIT - 7 - HINGED -	1	EA		
CEMENTER - TYPE H ES - 7 IN. 8RD	1	EA		
PLUG SET-FREE FALL-7"-8RD	1	EA		

## Tools and Accessories

Type	Size	Qty	Make	Depth	Type	Size	Qty	Make	Depth	Type	Size	Qty	Make
Guide Shoe					Packer					Top Plug			
Float Shoe					Bridge Plug					Bottom Plug			
Float Collar					Retainer					SSR plug set			
Insert Float										Plug Container			
Stage Tool										Centralizers			

## Miscellaneous Materials

Gelling Agt		Conc		Surfactant		Conc		Acid Type		Qty		Conc	%
Treatment Fld		Conc		Inhibitor		Conc		Sand Type		Size		Qty	

## Fluid Data

## Stage/Plug #: 1

Fluid #	Stage Type	Fluid Name	Qty	Qty uom	Mixing Density lbm/gal	Yield ft <sup>3</sup> /sk	Mix Fluid Gal/sk	Rate bbl/min	Total Mix Fluid Gal/sk
1	Clean Spacer III		30.00	bbl	10.5	.0	3.86	6	
2	Expandacem B1	EXPANDACEM (TM) SYSTEM (452979)	210.0	sacks	14.6	1.46	6.08	8	6.08
		6.081 Gal							
		FRESH WATER							
3	Water Based Mud Displacement			bbl	.			8	

## Stage/Plug #: 2

Fluid #	Stage Type	Fluid Name	Qty	Qty uom	Mixing Density uom	Yield uom	Mix Fluid uom	Rate uom	Total Mix Fluid uom
1	MUD FLUSH III	MUD FLUSH III - SBM (528788)	24.00	bbl	8.4	.0	.0	5	
2	EXTENDACEM B1	EXTENDACEM (TM) SYSTEM (452981)	570.0	sacks	11.3	2.48	14.21		14.21
		14.206 Gal							
		FRESH WATER							
3	HalCem B1	HALCEM (TM) SYSTEM (452986)	50.0	sacks	15.8	1.15	4.98	3	4.98
4	MUD			bbl	.			8	

## Calculated Values

## Pressures

## Volumes

Displacement		Shut In: Instant		Lost Returns		Cement Slurry		Pad	
Top Of Cement		5 Min		Cement Returns		Actual Displacement		Treatment	
Frac Gradient		15 Min		Spacers		Load and Breakdown		Total Job	

## Rates

Circulating	8	Mixing	8	Displacement	8	Avg. Job	8
Cement Left In Pipe	Amount	45 ft	Reason	Shoe Joint			
Frac Ring # 1 @	ID	Frac ring # 2 @	ID	Frac Ring # 3 @	ID	Frac Ring # 4 @	ID

The Information Stated Herein Is Correct

Customer Representative Signature

*The Road to Excellence Starts with Safety*

Sold To #: 314722	Ship To #: 2964382	Quote #:	Sales Order #: 900045218
Customer: CONQUEST OIL		Customer Rep: Benge, Red	
Well Name: SWD		Well #: #C4A	API/UWI #: 05-123-35841
Field: DJ BASIN	City (SAP): UNKNOWN	County/Parish: Weld	State: Colorado
Legal Description: Section 26 Township 6N Range 65W			
Lat: N 40.453 deg. OR N 40 deg. 27 min. 9.108 secs.		Long: W 104.628 deg. OR W -105 deg. 22 min. 20.424 secs.	
Contractor:		Rig/Platform Name/Num: Precision 706	
Job Purpose: Cement Multiple Stages			Ticket Amount:
Well Type: Disposal Well		Job Type: Cement Multiple Stages	
Sales Person: AARON, WESLEY		Srvc Supervisor: FANTASIA, JOSEPH	MBU ID Emp #: 485445

Activity Description	Date/Time	Cht #	Rate bbl/min	Volume bbl		Pressure psig		Comments
				Stage	Total	Tubing	Casing	
Arrive at Location from Service Center	12/02/2012 06:30							
Assessment Of Location Safety Meeting	12/02/2012 06:45							
Start Job	12/02/2012 09:20							
Test Lines	12/02/2012 09:37						3950.0	PRESSURE TEST LINES TO 4000 PSI
Pump Spacer 1	12/02/2012 09:39		5	30			550.0	30 BBLS CLEAN SPACER MIXED AT 10.5 PPG USING RIG WATER
Pump Lead Cement	12/02/2012 09:54		6	55			470.0	210 SKS EXPANDACEM MIXED AT 14.6 PPG USING SUPPLIED WATER.
Shutdown	12/02/2012 10:08							
Drop Top Plug	12/02/2012 10:15							3RD PARTY DART DROPPED DURING SHUTDOWN.
Pump Displacement	12/02/2012 10:18		7	345			880.0	GOOD RETURNS THROUGHOUT
Bump Plug	12/02/2012 11:20		3				1158.0	PLUG LANDED AT 1158 PSI. PRESSURE BROUGHT TO 1820 PSI AND HELD FOR 3 MIN.
Check Floats	12/02/2012 11:22							FLOATS HELD
Open Multiple Stage Cementer	12/02/2012 11:32		1				3219.0	PRESSURE UP TO OPEN HYDRAULIC MSC. TOOL OPENED AT 3219 PSI.
Activity Description	Date/Time	Cht	Rate bbl/min	Volume bbl		Pressure psig		Comments

Sold To # : 314722

Ship To # : 2964382

Quote # :

Sales Order # : 900045218



## Cementing Job Log

		#		Stage	Total	Tubing	Casing	
Circulate Well	12/02/2012 11:40		5	10			550.0	PUMP 10 BBLS AT 5 BBLS/MIN TO ESTABLISH CIRCULATION
Circulate Well	12/02/2012 11:43							RIG CIRCULATES WELL DURING 4 HOUR WOC. DURING CIRCULATION APPROX. 30 BBLS CLEAN SPACER TO SURFACE AND 1 BBL CEMENT TO SURFACE.
Test Lines	12/02/2012 15:34						3850.0	PRESSURE TEST LINES TO 4000 PSI
Pump Spacer 1	12/02/2012 15:36		6	24			550.0	24 BBLS MUDFLUSH
Pump Lead Cement	12/02/2012 15:46		8	255			758.0	570 SKS EXTENDACEM MIXED AT 11.3 PPG USING SUPPLIED WATER
Pump Tail Cement	12/02/2012 16:28		3	10			140.0	50 SKS HALCEM MIXED AT 15.8 PPG USING SUPPLIED WATER
Shutdown	12/02/2012 16:32							
Drop Top Plug	12/02/2012 16:33							
Pump Displacement	12/02/2012 16:35		8	285			1100.0	GOOD RETURNS THROUGHOUT. CEMENT TO SURFACE AT 265 BBLS OUT OF 285 BBLS TOTAL DISPLACEMENT. APPROX. 20 BBLS CEMENT TO SURFACE.
Bump Plug	12/02/2012 17:24		3				958.0	PLUG LANDED AT 958 PSI.
Close Multiple Stage Cementer	12/02/2012 17:25						1800.0	MSC SHIFTED CLOSED AT 1800 PSI. PRESSURE BROUGHT TO 2950 PSI UPON TOOL HAND REQUEST.
Release Casing Pressure	12/02/2012 17:29							RELEASE PRESSURE TO ASSURE MSC HAS CLOSED.
End Job	12/02/2012 17:30							

Sold To # : 314722

Ship To # :2964382

Quote # :

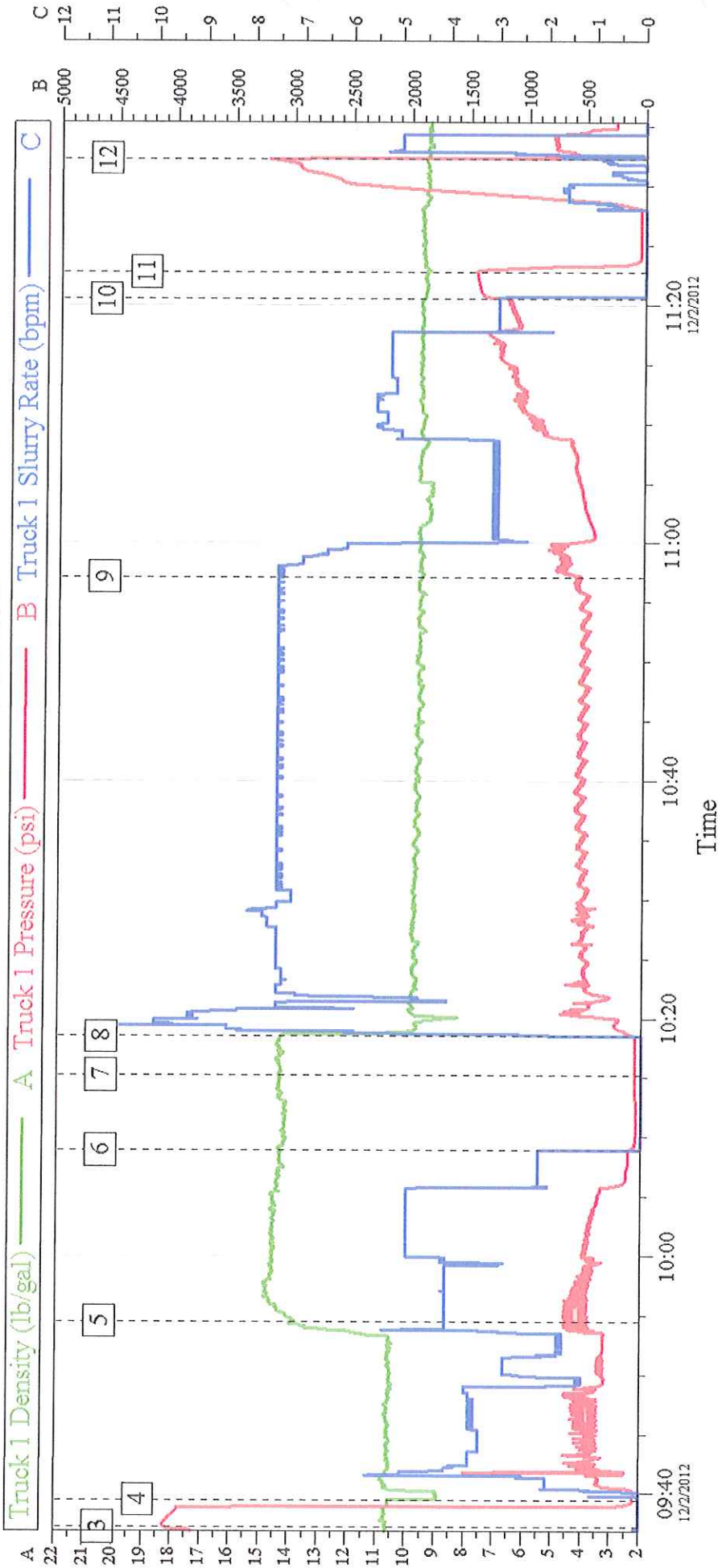
Sales Order # : 900045218

SUMMIT Version: 7.3.0045

Sunday, December 02, 2012 06:02:00

# CONQUEST SWD C4A

## 1st STAGE 7" INTERMEDIATE

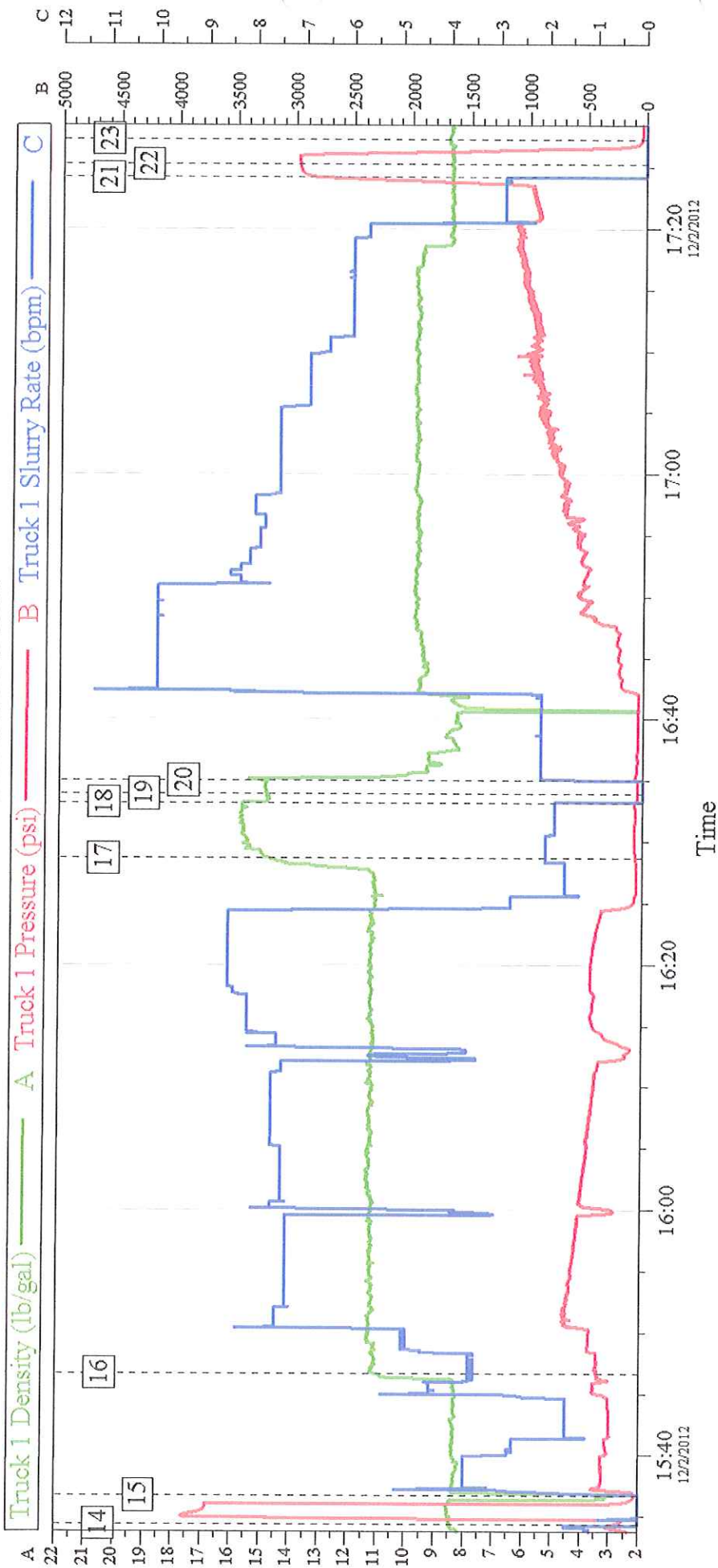


Global Event Log					
Intersection	T1P	Intersection	T1P	Intersection	T1P
3 Test Lines	09:37:12 4050	4 Pump Spacer 1	09:39:28 49.83	5 Pump Lead Cement	09:54:30 470.9
6 Shutdown	10:08:54 104.2	7 Drop Top Plug	10:15:12 51.00	8 Pump Displacement	10:18:28 53.69
9 Displ Reached Cmmt	10:57:08 544.7	10 Bump Plug	11:20:30 1176	11 Check Floats	11:22:46 1449
12 Open MSC	11:32:18 3219				

Customer:	Job Date: 02-Dec-2012	Sales Order #: 900045218
Well Description:	UWI:	

# CONQUEST SWD C4A

## 2nd STAGE 7" INTERMEDIATE



Global Event Log				
Intersection	T1P	Intersection	T1P	Intersection
14 Test Lines	15:34:23	205.6	15:36:42	34.68
17 Pump Tail Cement	16:28:39	61.10	16:33:14	64.73
20 Pump Displacement	16:35:02	45.36	17:24:08	2723
23 End Job	17:27:18	40.15		
			15:46:40	363.0
			16:33:57	42.00
			17:25:14	2969

Customer:	Job Date: 02-Dec-2012	Sales Order #: 900045218
Well Description:	UWI:	