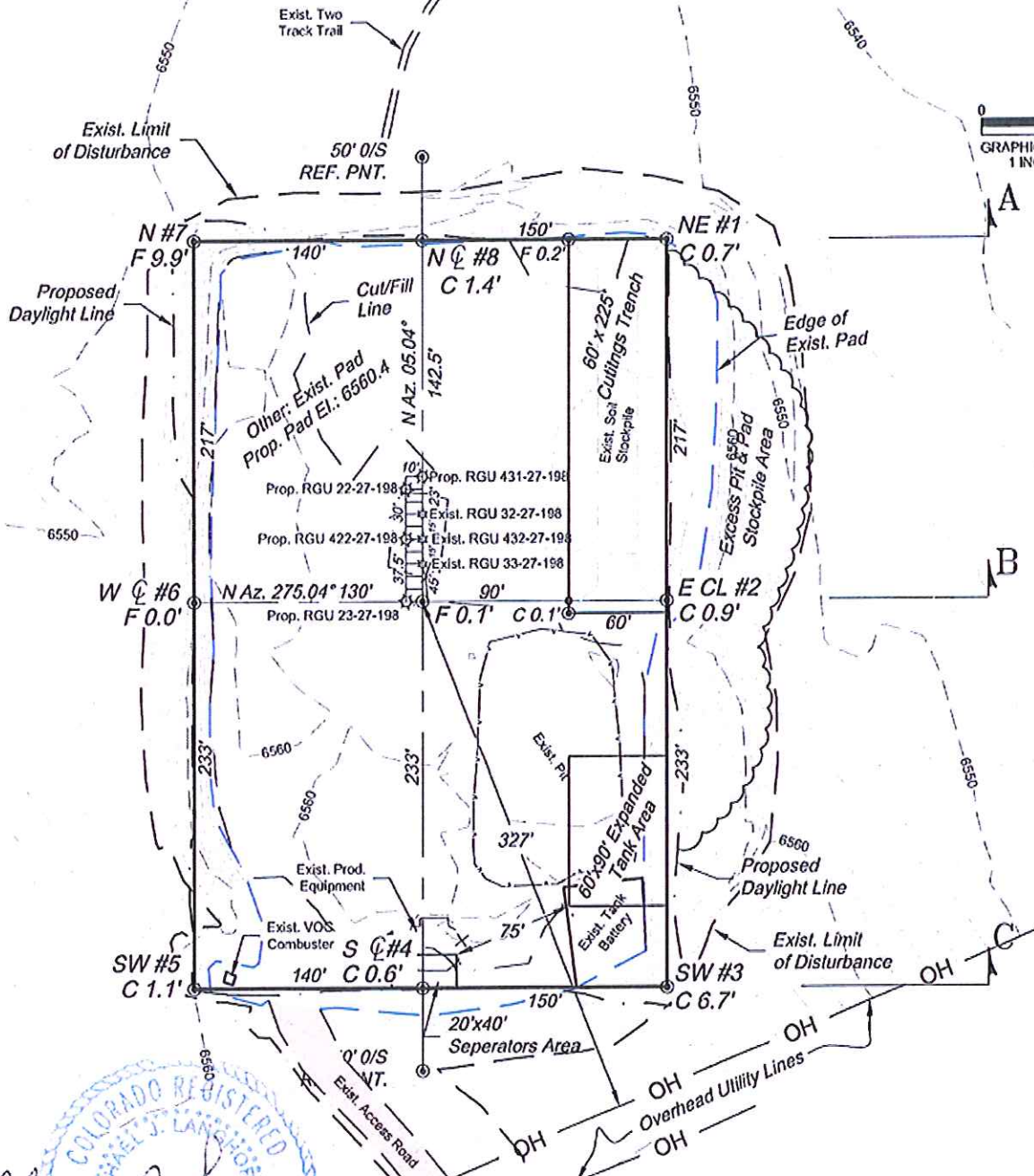


Section 27
T. 1 S., R 98 W
6th. P.M.



***NOTE:**

- 1.) USE EXCESS PIT MATERIAL TO COMPLETE PAD SURFACE, IF NECESSARY.
- 2.) 10% SWELL FACTOR APPLIED TO CUT VOLUME.
- 3.) TOTAL DISTURBED AREA = 5.59 ac.

REVISED: 1/21/13

SCALE: 1" = 100'
DATE: 12/18/12
PLAT: 2 of 7
PROJECT: Highlands
DFT: cws

ESTIMATED EARTHWORK QUANTITIES (cy)

ITEM	CUT	FILL	TOPSOIL	EXCESS
PAD	1900	1300	0	600
PIT	1200			1200
TOTALS	3100	1300	0	1800

Construction Plan Prepared for:
WPX ENERGY WPX Energy Rocky Mountain, LLC

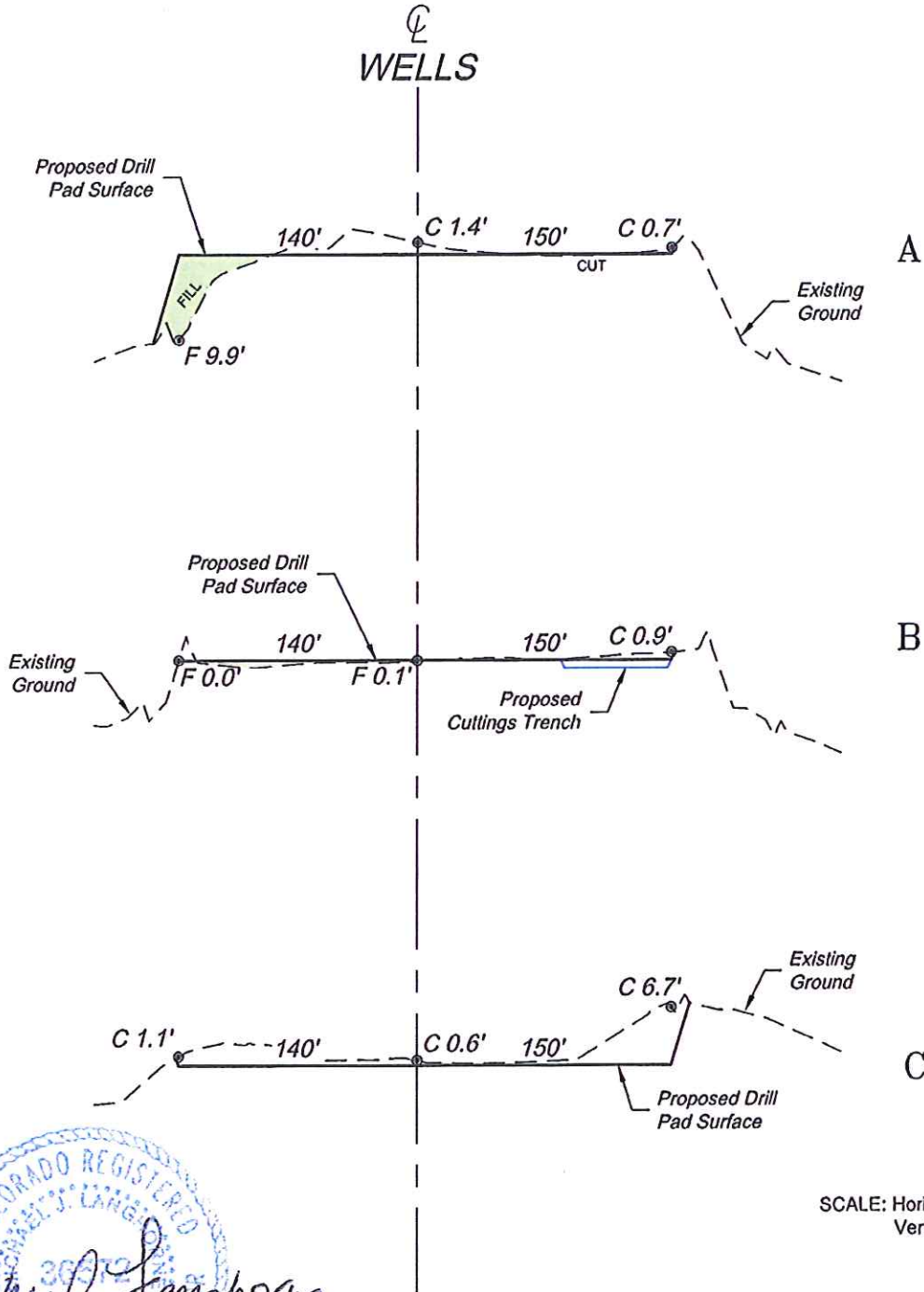
RGU 22-27-198 Drill Pad - Plat 2
CONSTRUCTION LAYOUT

136 East Third Street
Rifle, Colorado 81650
Ph. (970) 625-2720
Fax (970) 625-2773



BOOKCLIFF
Survey Services, Inc.

Section 27
T. 1 S., R 98 W
6th. P.M.



SCALE: Horiz.: 1" = 100'
Vert.: 1" = 20'

*NOTE:
CUT SLOPE: 1.5:1
FILL SLOPE: 1.5:1,
UNLESS OTHERWISE NOTED.



REVISED: 1/21/13

SCALE: As Noted
DATE: 12/18/12
PLAT: 3 of 7
PROJECT: Highlands
DFT: cws

Construction Plan Prepared for:
WPXENERGY WPX Energy Rocky Mountain, LLC
RGU 22-27-198 Drill Pad - Plat 3
**CONSTRUCTION LAYOUT
CROSS SECTIONS**

136 East Third Street
Rifle, Colorado 81650
Ph. (970) 625-2720
Fax (970) 625-2773

