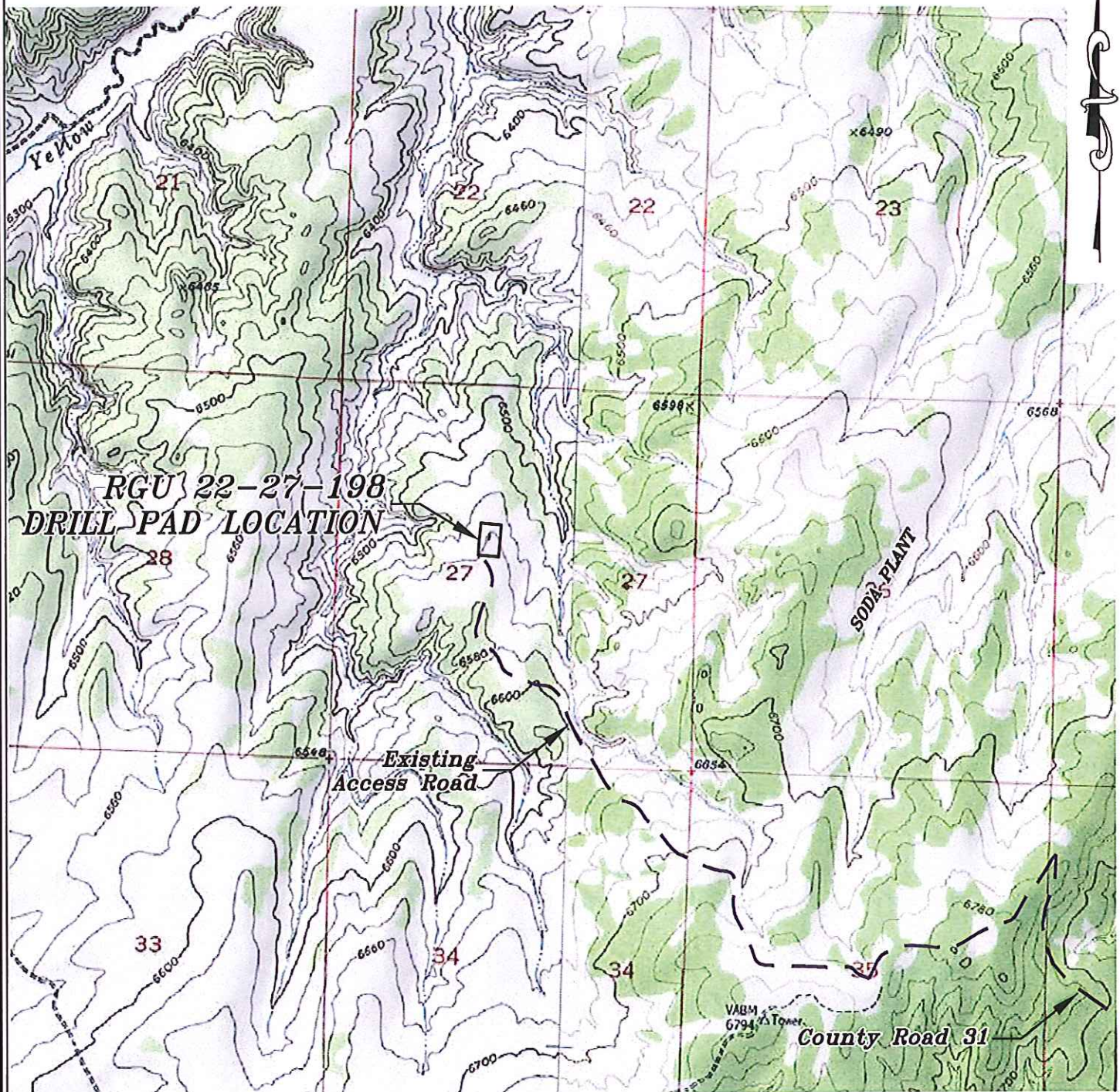


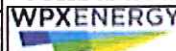
Section 27
T. 1 S., R 98 W
6th. P.M.



ACCESS DESCRIPTION:
FROM THE INTERSECTION OF STATE HIGHWAY 64 AND RIO BLANCO COUNTY ROAD 5 PROCEED SOUTHERLY ALONG COUNTY ROAD 5 ± 14.5 MILES TO THE INTERSECTION WITH COUNTY ROAD 24 (Mile Marker 26.8), PROCEED WESTERLY ALONG COUNTY ROAD 24 ± 1.8 MILES TO THE INTERSECTION WITH COUNTY ROAD 31, PROCEED RIGHT IN A NORTHERLY DIRECTION ± 2.3 MILES TO AN INTERSECTION WITH A DIRT/GRAVEL ROAD, PROCEED LEFT IN A SOUTHWESTERLY TO NORTHWESTERLY DIRECTION TO THE RGU 22-27-198 DRILL PAD LOCATION, AS SHOWN HEREON.

REVISED: 1/21/13

Construction Plan Prepared for:



WPX Energy Rocky Mountain, LLC

136 East Third Street
Rifle, Colorado 81650
Ph. (970) 625-2720
Fax (970) 625-2773



BOOKCLIFF
Survey Services, Inc.

SCALE: 1" = 2000'
DATE: 12/19/12
PLAT: 5 of 7
PROJECT: Highlands
DFT: cws

Drill Pad - Plat 5
ACCESS ROAD & TOPO MAP