

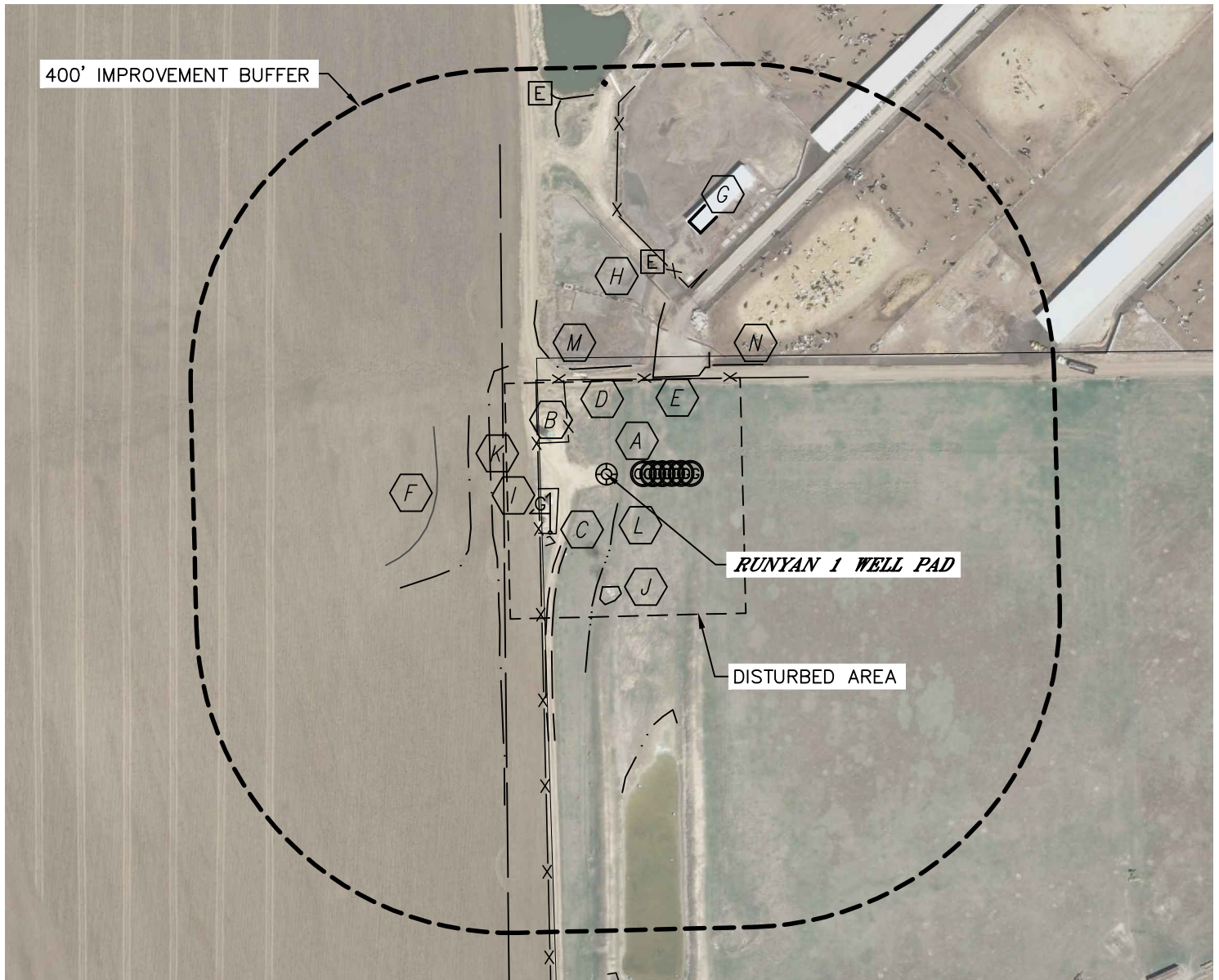


Lat40°, Inc. 1635 Foxtrail Drive, Suite 325 Loveland, CO 970-776-3321

LOCATION DRAWING

RUNYAN 1 WELL PAD

SECTION: 17
TOWNSHIP: 3N
RANGE: 68W



IMPROVEMENTS: (MEASURED FROM EXISTING RUNYAN 1 WELL LOCATION)

- | | |
|---|--|
| A PROPOSED O&G WELL 47' E | H ELECTRIC PEDESTAL 277' NE, 493' NW |
| B EX. PRODUCTION EQUIPMENT (TOP OPERATING) 63' NW, 64' SW, 107' SW | I GAS MARKER 103' SW |
| C FIELD ROAD 108' SW | J RIP RAP 144' S |
| D FENCE 87' W, 121' N, 260' NE | K POND 147' W, 175' W, 312' S. 481' N |
| E EDGE OF CONCRETE 137' NE, 261' NE | L DITCH 40' SE, 434' NW |
| F EDGE OF FIELD 215' W | M SEWAGE POND 136' N |
| G OUT BUILDING 330' NE, 496' N, 500' NE, 582' NE | N CONCRETE SEWAGE BASIN 195' NE |

NEAREST: BUILDING 330' NE (OUT-BUILDING), PUBLIC ROAD 897' S (CR 32),
ABOVE GROUND UTILITY 1223' E, RAILROAD 4100' SE, PROPERTY LINE 131' W

DATE: rev.1/16/2013
PROJECT#: 2012127