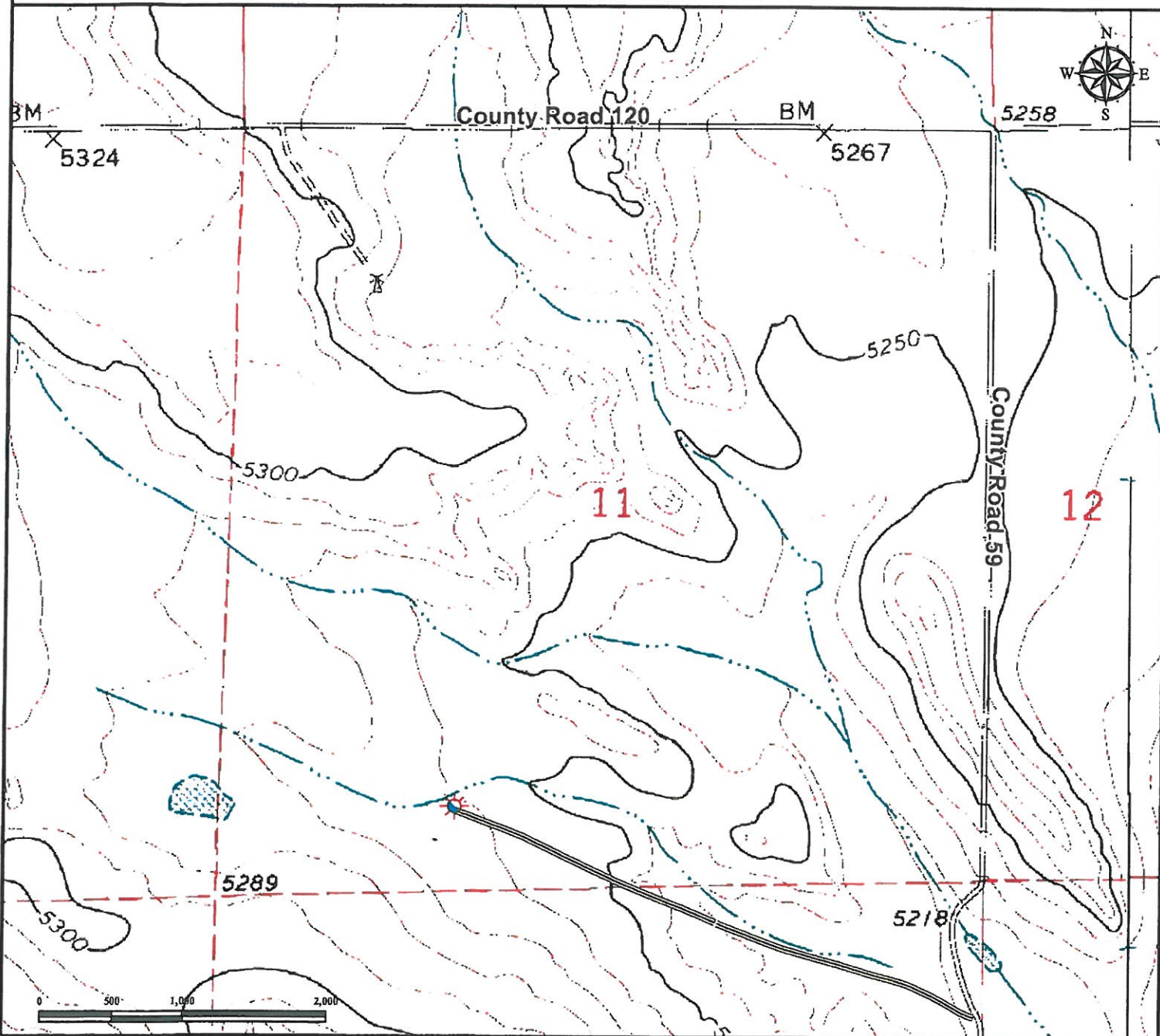


Access Road Map MARY KANODE 11-3

SE¼ SW¼ SECTION 11, TOWNSHIP 10 NORTH, RANGE 64 WEST OF THE 6TH PRINCIPAL MERIDIAN



From Grover, CO: From the intersection of County Road 390 and County Road 122 proceed West on County Road 122 ± 7 Miles.

Turn Left onto County Road 87 and proceed South ± 1.1 Miles.

Turn Right onto County Road 120 and continue West ± 13.9 miles to CR 59.


Turn Left On County Road 59 and proceed South ± 1.2 miles to well access road.

Turn Right onto well access road and proceed Northwest ± 0.75 miles to proposed well location.

Total distance from Grover, CO to proposed well location is 17.65 Miles.

Legend

 Proposed Well

 Access Road

Reference Location
** All Measurements are Made from
Reference Well MARY KANODE 11-3 **
Lat: 40.843540° Long: -104.517612° (NAD 83)
Elevation: 5269 Feet



Use our resources to find yours!
www.petro-fs.com
(303) 928-7128

Field Date: 04/08/2011
Drafting Date: 04/19/2011
Drafter: DMM
Checked By: BHF

Data Sources:
- Topo courtesy of USGS

Prepared for:



WARD
PETROLEUM
CORPORATION